

- Ground
- Power
- LED
- Internal Pin
- SWD Pin
- Digital Pin
- Analog Pin
- Other Pin
- Microcontroller's Port
- High Density Connector

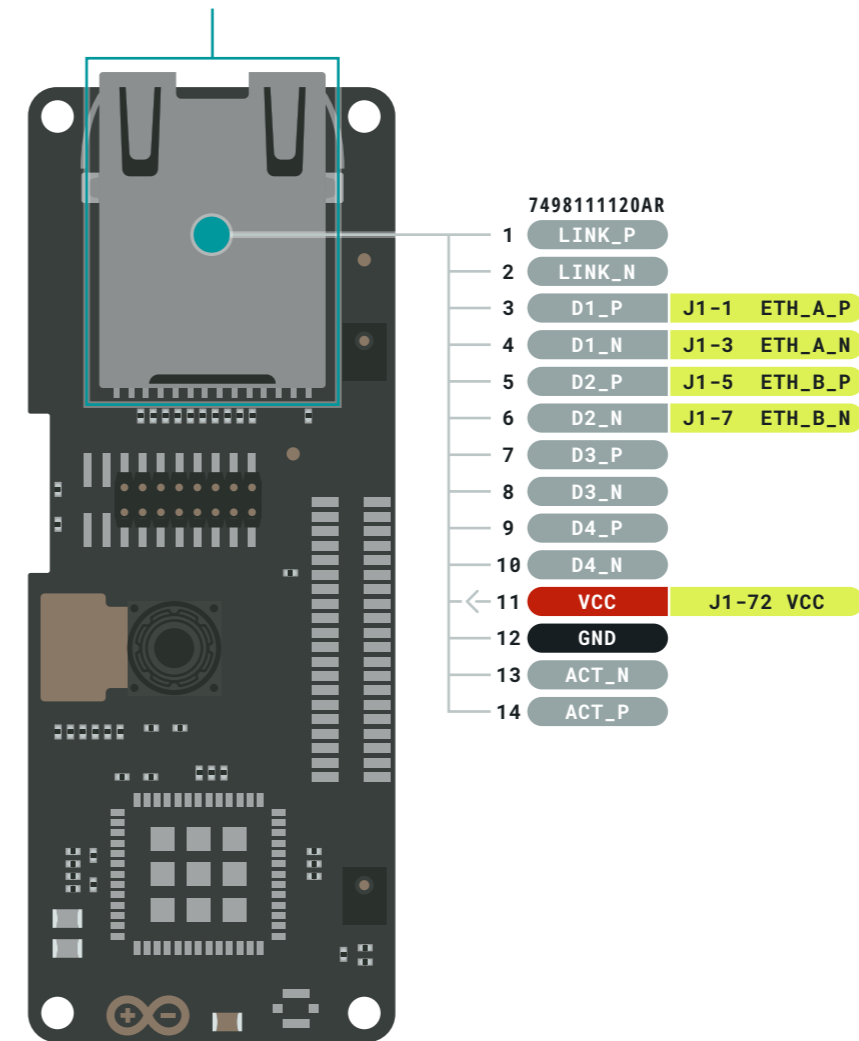
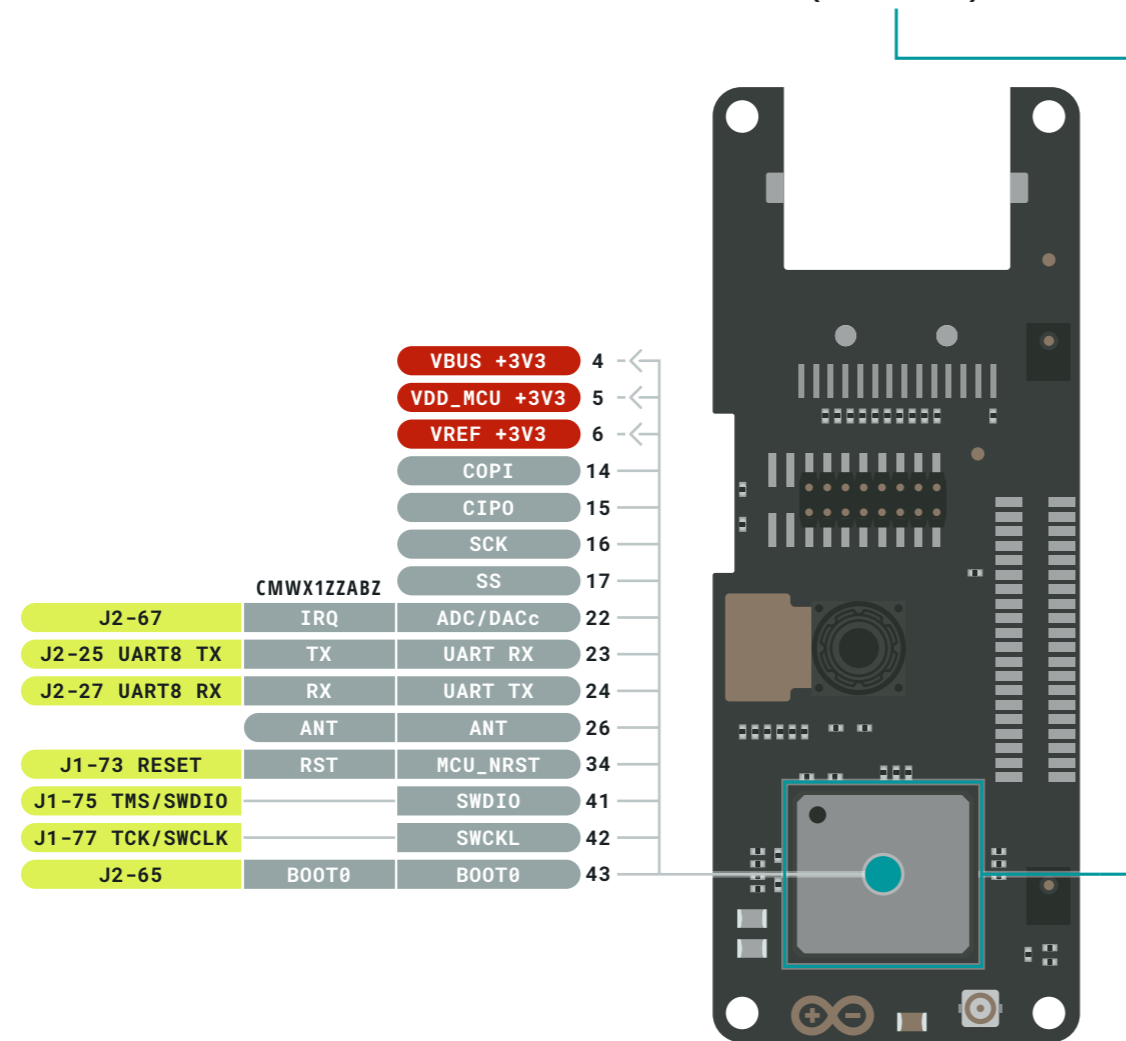
⚠ POWER LIMITS
 Depends on the Board used

NOTE: CIPO/COPI have previously been referred to as MISO/MOSI



The LoRa® connector is available only in the version with LoRa® Connectivity (ASX00026)

The Ethernet connector is available only in the version with Ethernet Connectivity (ASX00021)

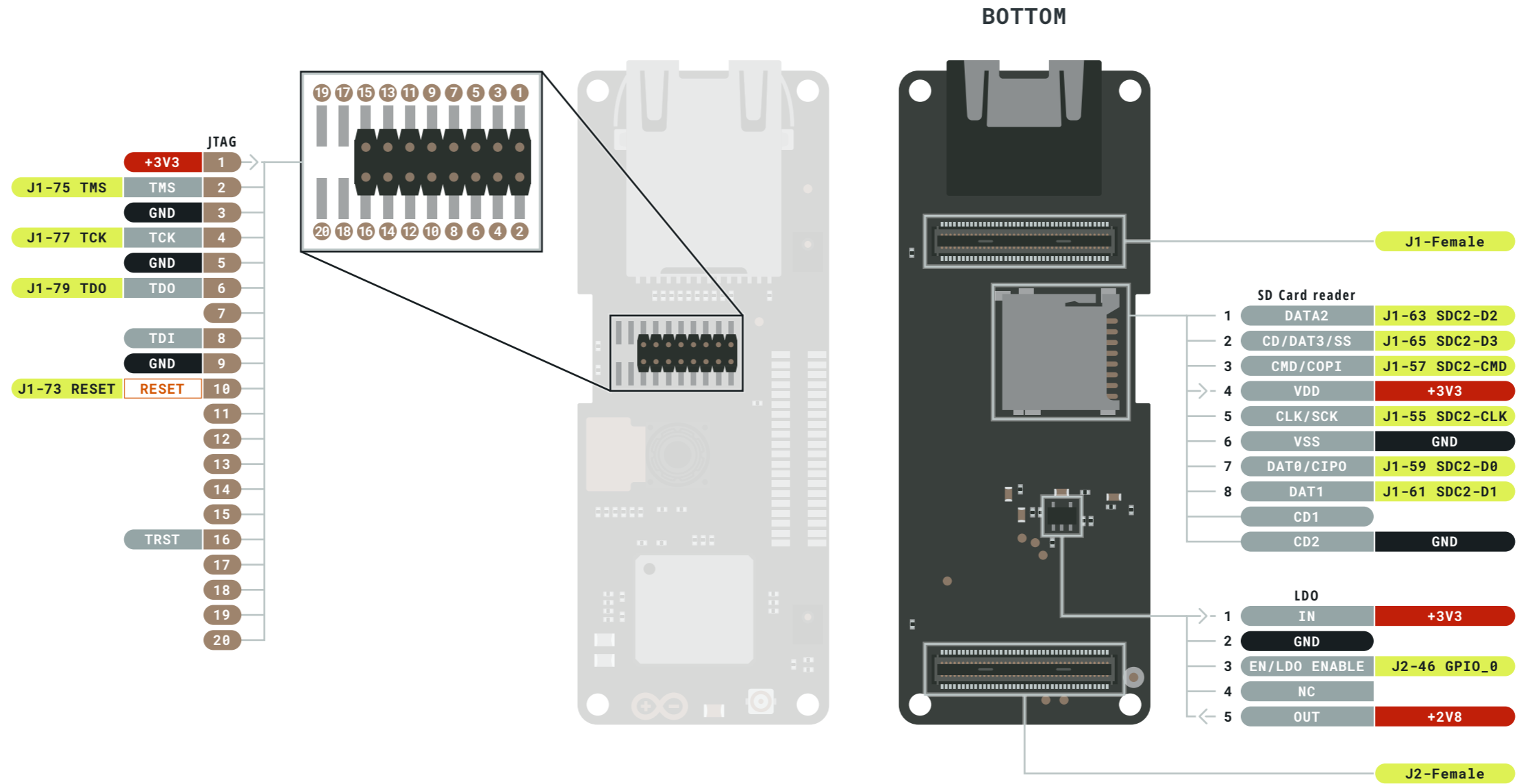


- Ground
- Power
- LED
- Internal Pin
- SWD Pin
- Digital Pin
- Analog Pin
- Other Pin
- Microcontroller's Port
- High Density Connector

⚠ POWER LIMITS
Depends on the Board used

NOTE: CIPO/COPI have previously been referred to as MISO/MOSI





- Ground
- Power
- LED
- Internal Pin
- SWD Pin
- Digital Pin
- Analog Pin
- Other Pin
- Microcontroller's Port
- High Density Connector

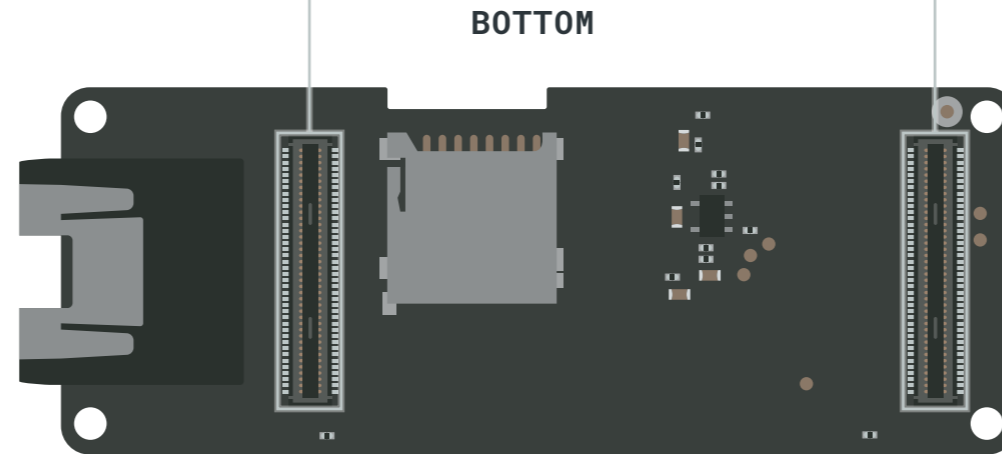
⚠ POWER LIMITS
Depends on the Board used

NOTE: CIPO/COPI have previously been referred to as MISO/MOSI



J1-Female

SWO	79	80
SWCK	77	78
SWDIO	75	76
RESET	73	74
	71	72 V-SDCARD
	69	70
	67	68 DMIC D0
SDC D3	65	66 DMIC CK
SDC D2	63	64 VSYS
SDC D1	61	62 I2S D0
SDC D0	59	60 I2S DI
SDC CMD	57	58 I2S WS
SDC CLK	55	56 I2S MCK
VSYS	53	54 GND
CAN1 RX	51	52
CAN1 TX	49	50
GND	47	48 VIN
I2C1 SD6	45	46 I2C0 SCL
I2C1 SDA	43	44 I2C0 SDA
VIN	41	42 GND
UART1 CTS	39	40 UART0 CTS
UART1 RTS	37	38 UART0 RTS
UART1 RX	35	36 UART0 RX
UART1 TX	33	34 UART0 TX
GND	31	32 VIN
USB1 ID	29	30
USB1 D-	27	28 USB0 D-
USB1 D+	25	26 USB0 D+
USB1 VBUS	23	24
VIN	21	22 GND
ETH L2	19	20 DSI CK-
ETH L1	17	18 DSI CK+
	15	16 DSI D0-
	13	14 DSI D0+
	11	12 DSI D1-
	9	10 DSI D1+
ETH B-	7	8
ETH B+	5	6
ETH A-	3	4
ETH A+	1	2



J2-Female

CAM D7	2	1 FORCE_BOOTLOADER
CAM D6	4	3 BOOT_SOURCE
CAM D5	6	5 POWER_ON_REQ
CAM D4	8	7 COINCELL
CAM D3	10	9
CAM D2	12	11
CAM D1	14	13
CAM D0	16	15
CAM VS	18	17
CAM CLK	20	19
CAM HS	22	21
GND	24	23 VCC/+3V3
UART2 TX	26	25 UART3 TX
UART2 RX	28	27 UART3 RX
	30	29
	32	31
VCC	34	33 GND
SPI1 CS	36	35
SPI1 CK	38	37
SPI1 CIPO	40	39
SPI1 COPI	42	41
GND	44	43 VCC/+3V3
GPIO 0	46	45 I2C2 SDA
GPIO 1	48	47 I2C2 SCL
GPIO 2	50	49 SAI CK
GPIO 3	52	51 SAI FS
GPIO 4	54	53 SAI D0
GPIO 5	56	55
GPIO 6	58	57 GND
PWM 6	60	59 PWM 1
PWM 7	62	61 PWM 2
PWM 8	64	63 PWM 3
PWM 9	66	65 PWM 4
PWM 10	68	67 PWM 5
GND	70	69 VCC/+3V3
ADC VREF-	72	71 ADC VREF+
ADC A4	74	73 ADC A0
ADC A5	76	75 ADC A1
ADC A6	78	77 ADC A2
ADC A7	80	79 ADC A3

- Ground
- Power
- LED
- Internal Pin
- SWD Pin
- Digital Pin
- Analog Pin
- Other Pin
- Microcontroller's Port
- High Density Connector

⚠ POWER LIMITS
Depends on the Board used

NOTE: CIPO/COPI have previously been referred to as MISO/MOSI



X-ON Electronics

Largest Supplier of Electrical and Electronic Components

Click to view similar products for [Ethernet Development Tools](#) category:

Click to view products by [Arduino](#) manufacturer:

Other Similar products are found below :

[XAUI-RISER-B](#) [KSZ8081RNB-EVAL](#) [KSZ8863FLL-EVAL](#) [KSZ8873MLL-EVAL](#) [PD-IM-7648M](#) [PD-IM-7648T4](#) [PD70101EVB15F-12](#)
[PD70101EVB6F](#) [PD70211EVB50FW-5](#) [PD70211EVB72FW-12](#) [EV09H26A](#) [EV44F42A](#) [DP83620-EVK/NOPB](#) [KSZ8031RNL-EVAL](#)
[WIZ550S2E-232-EVB](#) [DFR0272](#) [A000024](#) [DFR0125](#) [UKIT-006GP](#) [UKIT-003FE](#) [UKIT-002GB](#) [UKIT-001FE](#) [EVB-KSZ9477](#) [OM-E-ETH](#)
[UP-POE-A20-0001](#) [2971](#) [3785](#) [ASX00006](#) [ASX00021](#) [ASX00026](#) [XTIB-E](#) [ESP32-ETHERNET-KIT-VE](#) [EVB-KSZ9897-1](#) [KSZ9031MNX-](#)
[EVAL](#) [AC164121](#) [AC164123](#) [AC164132](#) [AC320004-5](#) [AC320004-6](#) [AC320004-7](#) [DM320114](#) [DM990004](#) [EV02N47A](#) [EV44C93A](#)
[EV57N07A](#) [EVB-KSZ8563](#) [EVB-KSZ9477-1](#) [EVB-KSZ9893](#) [EVB-LAN7430](#) [EVB-LAN7431-EDS](#)