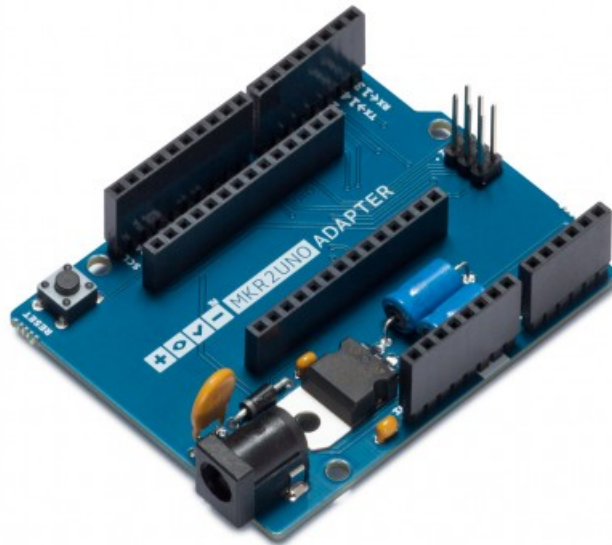




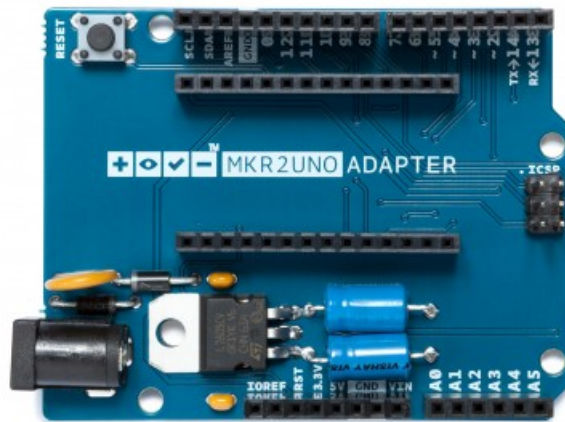
MKR2UNO ADAPTER

Code: TSX00005

Simply mount your MKR1000 to this new adapter and plug in any of your UNO shields!

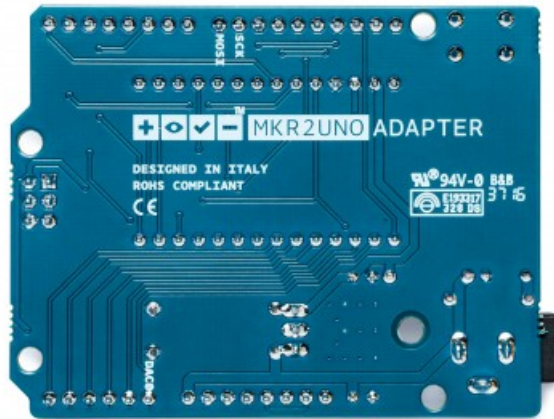


The MKR2UNO Adapter allows you to turn your Arduino UNO form factor based project into a MKR based one without too much effort! You can so upgrade your project with a powerful board with integrated LiPo battery charger.



TECH SPECS

Operating Voltage	3.3V
Input Voltage (recommended)	7-12V
Input Voltage (limit)	6-16V
Analog Input Pins	6
Analog Output Pins	1
Digital I/O Pins	14
DC Current for 3.3V Pin	700 mA
DC Current for 5V Pin	700 mA
Length	68.6 mm
Width	53.4 mm
Weight	24 g

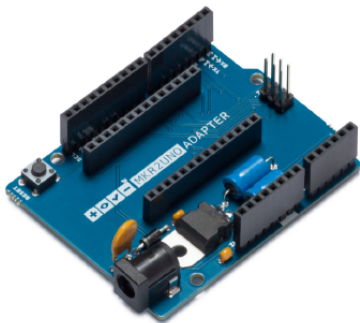


OSH: Schematics

MKR2UNO is open-source hardware! You can build your own board using the following files:

[EAGLE FILES IN .ZIP](#) [SCHEMATICS IN .PDF](#)

Please keep in mind that the MKR2UNO is just a **form factor adapter** and so is **NOT present any voltage translation**. Be careful before connecting a shield since shield without IOREF level shifting capability may not work properly.



01

GET YOUR
MKR2UNO ADAPTER



02

MOUNT YOUR ARDUINO
MKR1000



03

PLUG IN ANY OF
YOUR UNO SHIELDS

Like in many others Arduino boards this adapter allows to power your MKR board using a barrel jack with center positive polarity or the VIN pin on the headers.



If you want to use the [Arduino MKRZero](#) and the [Arduino WiFi shield 101](#) read the [Arduino WiFi shield 101 reference](#) to change module pins.

Unlike the Arduino UNO, the MKR2UNO Adapter **do NOT have** I2C signals on A4 and A5 and SPI on pins 11, 12 and 13.

All the pins on the MKR2UNO Adapter are wired one to one from the MKR to the UNO form factor with some exception:

MKR form factor pin	UNO form factor pin
0	13
1	10
13	0
14	1



X-ON Electronics

Largest Supplier of Electrical and Electronic Components

Click to view similar products for [Sockets & Adapters](#) category:

Click to view products by [Arduino](#) manufacturer:

Other Similar products are found below :

[6508-0-00-01-00-00-33-0](#) [AC164348](#) [1262](#) [22827](#) [AC164353](#) [TDGL015](#) [ATF15XXDK3-SAA100](#) [70-0036](#) [OM13019,598](#)

[R0E000200KCT00](#) [LFVDBGF](#) [SM132CQ-ACTEL](#) [conga-Thin MITX/eDP to DP Adapter](#) [SLG46536V-SKT](#) [TOOLSTICK990MPP](#)

[MIKROE-425](#) [110-83-320-41-605101](#) [110-83-632-41-605101](#) [110-83-640-41-605101](#) [110-83-628-41-605101](#) [116-83-306-41-001101](#)

[SLG46120V-SKT](#) [SLG46121V-SKT](#) [SLG46170V-SKT](#) [SLG46533V-SKT](#) [SLG46537V-SKT](#) [SLG46621V-SKT](#) [PA0003](#) [PA0007](#) [PA0009](#)

[PA0035](#) [PA0085](#) [PA0096](#) [KITPF0100SKTEVBE](#) [CRD-HDMI-DC](#) [AC164307](#) [AC164336](#) [IPC0079](#) [ATARDADPT-XPRO](#) [ATARD-](#)

[DBGADPT](#) [ATICE50MEM](#) [ATRF231USB-RD](#) [80-000286](#) [ATSTK600-RC22](#) [ATSTK600-RC26](#) [ATSTK600-RC46](#) [ATSTK600-RC79](#)

[ATSTK600-RC88](#) [ATSTK600-RC91](#) [ATSTK600-SC06](#)