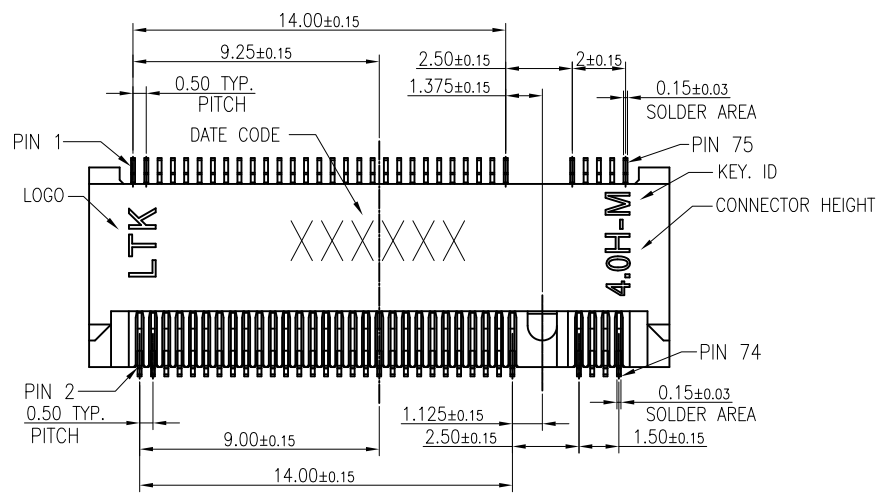


1 2 3 4 5 6 7 8

REV.	MODIFICATION	DATE	DRAW
A	INITIAL RELEASE	2013.08.13	Coco
B	ECN-2015023	2015.07.10	Ann

HALOGEN FREE **LEAD FREE**

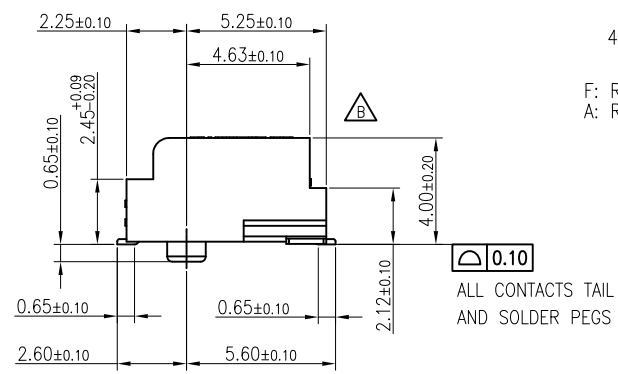
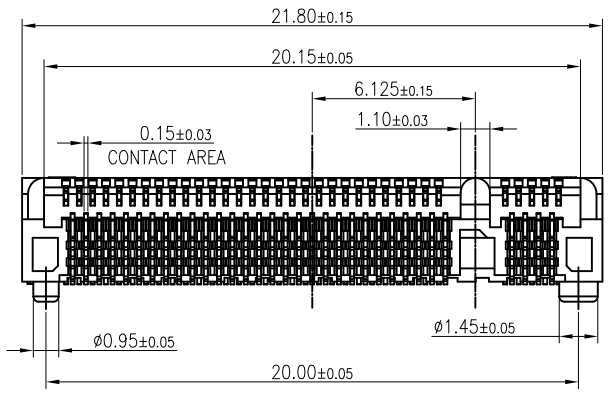
A



B

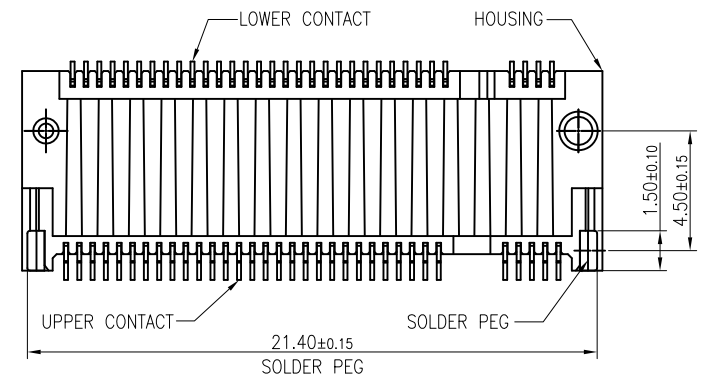
NOTES:
 1.MATERIAL:
 HOUSING: THERMOPLASTIC, BLACK COLOR, FLAME RESISTANCE UL94-V0.
 CONTACT: COPPER ALLOY.
 SOLDER PEGS: COPPER ALLOY.
 2.FINISHED:
 CONTACTS: GOLD PLATING ON CONTACT AREA.(SEE P/N) 1u~3u" Au ON THE SOLDER AREA. 50~150u" NICKEL PLATING OVER ALL.
 SOLDER PEGS: 50~150u" MATTE TIN PLATING OVER ALL. 50~150u" NICKEL UNDER PLATED OVER ALL.
 3.MSL LEVEL:
 MSL(MOISTURE SENSITIVITY LEVEL)=1.
 4.PART NUMBER:
 NXSM0-S67XX-XX40
 F: REEL W:32.0mm
 A: REEL W:44.0mm
 XX: CONTACT AREA
 01:Gold Flash
 05: 5U"Min.
 10:10U"Min.
 15:15U"Min.
 20:20U"Min.
 30:30U"Min.
 PACKING
 TP:TAPE REEL(NORMAL DIRECTION)
 TS:TAPE REEL(REVERSE DIRECTION)

C



D

E



F

1 2 3 4 5 6 7 8

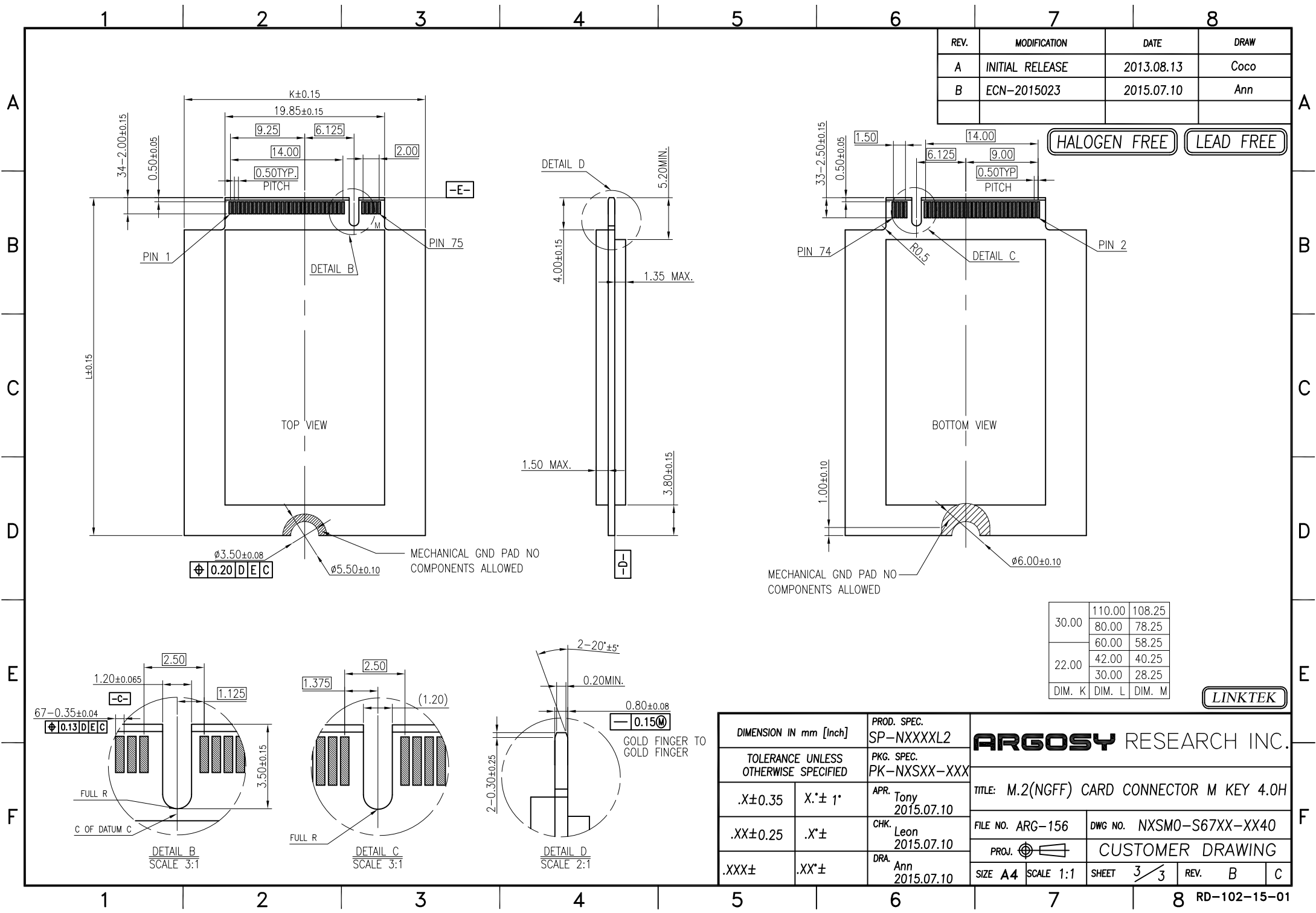
DIMENSION IN mm [Inch]		PROD. SPEC. SP-NXXXXL2
TOLERANCE UNLESS OTHERWISE SPECIFIED		PKG. SPEC. PK-NXSXX-XXX
.X±0.35	X*± 1*	APR. Tony 2015.07.10
.XX±0.25	.X*±	CHK. Leon 2015.07.10
.XXX±	.XX*±	DRA. Ann 2015.07.10

ARGOSY RESEARCH INC.

TITLE: M.2(NGFF) CARD CONNECTOR M KEY 4.0H

FILE NO. ARG-156	DWG NO. NXSM0-S67XX-XX40
PROJ.	
SIZE A4	SCALE 1:1
SHEET 1/3	REV. B C

LINKTEK



REV.	MODIFICATION	DATE	DRAW
A	INITIAL RELEASE	2013.08.13	Coco
B	ECN-2015023	2015.07.10	Ann

HALOGEN FREE LEAD FREE

30.00	110.00	108.25
	80.00	78.25
22.00	60.00	58.25
	42.00	40.25
	30.00	28.25
DIM. K	DIM. L	DIM. M

LINKTEK

DIMENSION IN mm [Inch]		PROD. SPEC. SP-NXXXXL2
TOLERANCE UNLESS OTHERWISE SPECIFIED		PKG. SPEC. PK-NXSXX-XXX
.X±0.35	X'±1"	APR. Tony 2015.07.10
.XX±0.25	.X'±	CHK. Leon 2015.07.10
.XXX±	.XX'±	DRA. Ann 2015.07.10

ARGOSY RESEARCH INC.			
TITLE: M.2(NGFF) CARD CONNECTOR M KEY 4.0H			
FILE NO. ARG-156		DWG NO. NXSM0-S67XX-XX40	
PROJ.		CUSTOMER DRAWING	
SIZE A4	SCALE 1:1	SHEET 3/3	REV. B C

X-ON Electronics

Largest Supplier of Electrical and Electronic Components

Click to view similar products for [Standard Card Edge Connectors](#) category:

Click to view products by [Argosy](#) manufacturer:

Other Similar products are found below :

[CR7E-30DB-3.96E\(72\)](#) [6364499-1](#) [6565204-6](#) [147889-1](#) [EBT15622B2X](#) [1-582587-1](#) [284-0102-12100](#) [286-0052-12101A](#) [306022901000000](#)
[307-012-502-202](#) [307-056-520-300](#) [A6D22DS29C2](#) [1926088-2](#) [2129318-1](#) [287-0032-12101](#) [345-060-559-303](#) [392-008-559-201](#) [534671-1](#)
[341-240-317](#) [345-044-500-300](#) [346-240-318](#) [387-012-523-300](#) [395-100-524-300](#) [09-07-2032](#) [10035388-802LF](#) [10115859-011LF](#) [10122859-](#)
[009LF](#) [101269333204245CLF](#) [530555-1](#) [66925-516LF](#) [5145409-2](#) [73726-0005](#) [66308-1](#) [5036A30](#) [PEC-07-02-T-S-A](#) [346-014-520-801](#)
[KSLX-62-BR](#) [307-048-502-202](#) [CE100F26-7-C](#) [CE100F28-3-D](#) [CE100F28-4-D](#) [CE156F18-9-C](#) [CE156F22-5-D](#) [CE156F22-9-C](#) [CT100F22-](#)
[2-D](#) [CT100F22-3-D](#) [CT100F24-2-D](#) [CT100F24-3-D](#) [CT100F24-6-C](#) [CT156F22-4-D](#)