



# Series 354000 DIP-to-SOIC Adapter

## FEATURES

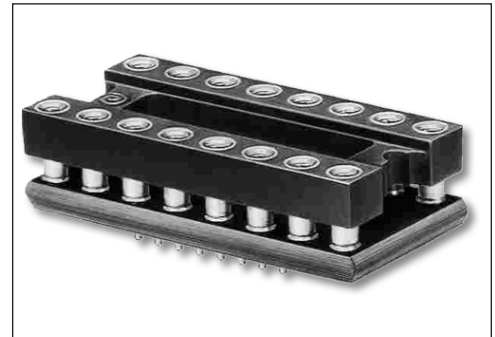
- Convenient, cost-effective means of converting DIP-to-SOIC PC board layouts.

## GENERAL SPECIFICATIONS

- SOCKET BODY: black, UL 94V-0 glass-filled 4/6 Nylon 170°C continuous use temp
- PCB: FR-4, 0.062 [1.58] thick
- MALE ADAPTER PIN: Brass 360 1/2-hard per UNS C36000, ASTM B16/B16M
- MALE PIN PLATING: 200μ [5.08μ] Sn/Pb 93/7 per ASTM B579-73 over 100μ [2.54μ] Ni per SAE AMS-QQ-N-290
- FEMALE CONTACT PIN: Brass 360 1/2-hard per UNS C36000, ASTM B16/B16M
- FEMALE PIN PLATING: 10μ [0.254μ] Au per MIL-G-45204 over 100μ [2.54μ] Ni per SAE AMS-QQ-N-290
- 4-FINGER COLLET CONTACT: BeCu per UNS C17200, ASTM B194-08
- FEMALE CONTACT PLATING: 10μ [0.254μ] Au per MIL-G-45204 over 50μ [1.27μ] Ni per SAE AMS-QQ-N-290
- CONTACT CURRENT RATING: 3 amps
- OPERATING TEMPERATURE: 221°F [105°C]
- INSERTION FORCE: 180g/pin; based on a 0.018 [0.46] dia. test lead
- WITHDRAWAL FORCE: 90g/pin; based on a 0.018 [0.46] dia. test lead
- NORMAL FORCE: 140g/pin; based on a 0.018 [0.46] dia. test lead
- SOCKET ACCEPTS LEADS: 0.015-0.025 [0.38-0.64] in dia., 0.100-0.125 [2.54-3.18] long

## MOUNTING CONSIDERATIONS

- SUGGESTED PCB SOLDER PAD SIZE: 0.028 [0.71] min. width



**CUSTOMIZATION:** In addition to the standard products shown on this page, Aries specializes in custom design and production. Special materials, platings, sizes, and configurations can be furnished, depending on the quantity. **NOTE:** Aries reserves the right to change product general specifications without notice.

## ORDERING INFORMATION

**XX-354000-X 0**

Pins \_\_\_\_\_ Plating  
8, 14, 16, 20, 24, 28 Sn/Pb  
Series \_\_\_\_\_  
Adapter Pin Options \_\_\_\_\_  
(see P/N Suffix Table)  
1 = Short Adapter Pin  
2 = Long Adapter Pin

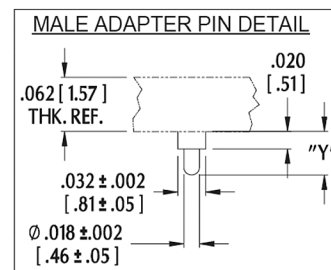
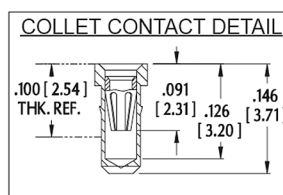
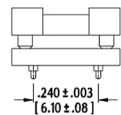
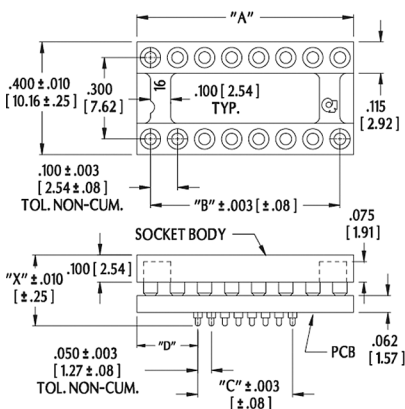
P/N Suffix	Dim. "X"	Dim. "Y"
-10	0.265 [16.73]	0.050 [1.27]
-20	0.325 [8.26]	0.110 [2.79]

ALL DIMENSIONS: INCHES [MILLIMETERS]

ALL TOLERANCES: ±0.005 [0.13] UNLESS OTHERWISE SPECIFIED

CONSULT FACTORY FOR OTHER SIZES AND CONFIGURATIONS

Pins	Dim. "A"	Dim. "B"	Dim. "C"	Dim. "D"
8	0.400 [10.16]	0.400 [10.16]	0.100 [2.54]	0.125 [3.175]
14	0.700 [17.78]	0.600 [15.24]	0.300 [7.62]	0.225 [5.72]
16	0.800 [20.32]	0.700 [17.78]	0.350 [8.89]	0.225 [5.72]
20	1.000 [25.40]	0.900 [22.86]	0.450 [11.43]	0.275 [6.99]
24	1.200 [30.48]	1.100 [27.94]	0.550 [13.97]	0.325 [8.26]
28	1.400 [35.56]	1.300 [33.02]	0.650 [16.51]	0.375 [9.53]



Bristol, PA 19007-6810 USA  
TEL (215) 781-9956 • FAX (215) 781-9845  
WWW.ARIESELEC.COM • INFO@ARIESELEC.COM

PRINTOUTS OF THIS DOCUMENT MAY BE OUT OF DATE AND SHOULD BE CONSIDERED UNCONTROLLED

18009  
Rev. AB

## X-ON Electronics

Largest Supplier of Electrical and Electronic Components

*Click to view similar products for [IC & Component Sockets](#) category:*

*Click to view products by [Aries](#) manufacturer:*

Other Similar products are found below :

[0066-3-17-15-30-14-02-0](#) [670](#) [672](#) [673](#) [694-13-640-00-672-000](#) [712-93-120-41-001000](#) [714-93-104-31-018000](#) [8059-4G1-LF](#) [807-22-001-10-001101](#) [807-22-001-10-006101](#) [807-22-001-30-011101](#) [807-22-001-30-012101](#) [807-22-001-30-013101](#) [807-22-001-30-014101](#) [8-1437531-4](#) [8150-6P10](#) [833-93-034-10-001000](#) [851-41-006-10-001000](#) [851-43-008-20-001000](#) [851-43-014-20-001000](#) [851-93-006-20-001000](#) [851-93-010-20-001000](#) [853-43-020-10-001000](#) [86.010.0053.0](#) [116-43-308-41-007000](#) [PX-68LCC](#) [121-13-318-41-001000](#) [121-13-320-41-001000](#) [121-13-308-41-001000](#) [123-43-314-41-801000](#) [123-43-420-41-001000](#) [123-87-320-41-001101](#) [122-13-316-41-001000](#) [123-13-624-41-001000](#) [123-43-306-41-001000](#) [12-3513-11](#) [123-91-320-41-001000](#) [126-43-310-41-002000](#) [AKSUN 37V-T](#) [1437503-9](#) [1437504-1](#) [146-44-308-41-013000](#) [APO-320-G-T](#) [146-43-308-41-012000](#) [160-10-308-00-001000](#) [160-40-320-00-001000](#) [214-99-306-01-670800](#) [232-1270-02-0602](#) [2-382761-4](#) [2-5331677-4](#)