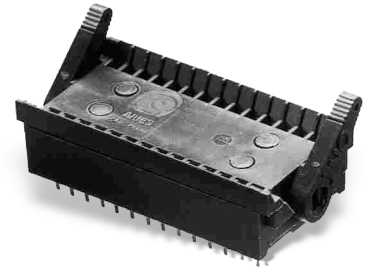




Series 516 Zero-Insertion-Force Socket

FEATURES

- Choice of 24-, 28-, or 40-pin Count Devices Inserted without Bending or Damaging Device Legs
- Insert and Remove Components from Socket without Force
- Contacts Normally-open and Closed by Unique Cam Action Controlled by Dual Lever Arms
- Last 15° of Cam Movement provides Wiping Action of the Device Legs Removing any Residue, Ensuring Gas-tight Seal
- Tapered Entry Guides Device Legs into Mating Socket Contacts



GENERAL SPECIFICATIONS

- **BODY, HANDLE, CAM:** black UL 94V-0 glass-filled 4/6 Nylon
- **PINS:** BeCu 170 or 172, 1/2-hard
- **PIN PLATING:** 10μ [0.254μ] min. Au per MIL-G-45204 over 50μ [1.27μ] min. Ni per SAE AMS-QQ-N-290
- **CONTACT CURRENT RATING:** 1 amp
- **OPERATING TEMPERATURE:** 257°F [125°C]
- **MINIMUM RETENTION FORCE (when closed):** 15g/lead, based on a 0.008 [0.20] thick test lead
- **ACCEPTS LEADS:** from 0.075 to 0.250 [1.91 to 6.35]

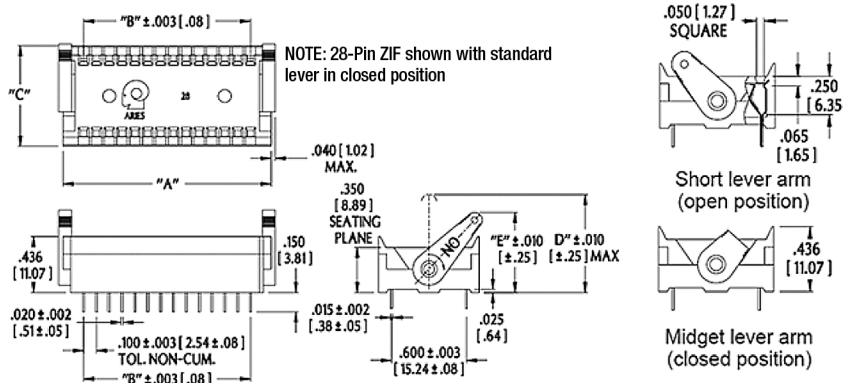
MOUNTING CONSIDERATIONS

- **SUGGESTED PCB HOLE SIZE:** 0.035 ±0.002 [0.89 ±0.05] dia.

ORDERING INFORMATION

XX-516-11 X

- Optional Lever Arm
S = Short
M = Midget
- Plating
11 = Au over Ni
- Series
- Pins
24, 28, 40



$$\begin{aligned}
 \text{"A"} &= (\text{NO. OF PINS PER ROW} \times 0.100 [2.54]) + 0.220 [5.588] \\
 \text{"B"} &= (\text{NO. OF PINS PER ROW} - 1) \times 0.100 [2.54]
 \end{aligned}$$

No. of Pins	Standard Lever Arm			Short Lever Arm		Midget Lever Arm	
	Dim. "C"	Dim. "D"	Dim. "E"	Dim. "D"	Dim. "E"	Dim. "D"	Dim. "E"
24	0.785 [19.94]	0.76 [19.30]	0.630 [16.00]	0.60 [15.24]	0.520 [13.21]	0.41 [10.41]	0.42 [10.67]
28	0.785 [19.94]	0.76 [19.30]	0.630 [16.00]	0.60 [15.24]	0.520 [13.21]	0.41 [10.41]	0.42 [10.67]
40	0.780 [19.81]	0.76 [19.30]	0.630 [16.00]	0.60 [15.24]	0.520 [13.21]	0.41 [10.41]	0.42 [10.67]

ALL DIMENSIONS: INCHES [MILLIMETERS]
 ALL TOLERANCES: ±0.005 [0.13] UNLESS OTHERWISE SPECIFIED
 FOR SERIES 526 LO-PRO® FILE ZIF SOCKET, SEE DATA SHEET 10018
 CONSULT FACTORY FOR OTHER SIZES AND CONFIGURATIONS

CUSTOMIZATION: ARIES SPECIALIZES IN CUSTOM DESIGN AND PRODUCTION. SPECIAL MATERIALS, PLATINGS, SIZES, AND CONFIGURATIONS CAN BE FURNISHED, DEPENDING ON QUANTITY.

ARIES RESERVES THE RIGHT TO CHANGE PRODUCT GENERAL SPECIFICATIONS WITHOUT NOTICE

PRINTOUTS OF THIS DOCUMENT MAY BE OUT-OF-DATE AND SHOULD BE CONSIDERED UNCONTROLLED



ARIES
ELECTRONICS, INC.

2609 Bartram Road • Bristol, PA 19007-6810 USA
 TEL 215-781-9956 • FAX 215-781-9845
 WWW.ARIESELEC.COM • INFO@ARIESELEC.COM



10017
 Rev. 1.2
 1 of 1

X-ON Electronics

Largest Supplier of Electrical and Electronic Components

Click to view similar products for [IC & Component Sockets](#) category:

Click to view products by [Aries](#) manufacturer:

Other Similar products are found below :

[614-DG5](#) [670](#) [672](#) [673](#) [712-93-120-41-001000](#) [714-93-104-31-018000](#) [8-1437531-4](#) [8150-6P10](#) [835-43-014-10-001000](#) [851-41-006-10-001000](#) [851-43-008-20-001000](#) [851-43-014-20-001000](#) [851-93-006-20-001000](#) [851-93-010-20-001000](#) [853-43-020-10-001000](#) [86.010.0053.0](#) [116-43-308-41-007000](#) [121-13-318-41-001000](#) [121-13-320-41-001000](#) [121-13-308-41-001000](#) [123-43-314-41-801000](#) [123-43-420-41-001000](#) [122-13-316-41-001000](#) [123-13-624-41-001000](#) [123-43-306-41-001000](#) [12-3513-11](#) [123-91-320-41-001000](#) [126-43-310-41-002000](#) [AKSUN](#) [37V-T](#) [1437503-9](#) [1437504-1](#) [APA-640-G-P](#) [146-44-308-41-013000](#) [146-43-308-41-012000](#) [160-10-308-00-001000](#) [160-40-320-00-001000](#) [214-99-306-01-670800](#) [2-382761-4](#) [2-5331677-4](#) [2-640360-3](#) [2801-3-00-44-00-00-07-0](#) [940-44-052-17-400004](#) [299-83-314-11-001101](#) [1986000-2](#) [2103331641101000](#) [210-43-320-41-001000](#) [210-99-628-41-001000](#) [2-1437504-6](#) [2-1437515-5](#) [2-1437531-2](#)