

LPT50-M Series

55 Watts

Data Sheet

Total Power: 47 - 55 Watts
Input Voltage: 90 - 264 Vac
 127 - 300 Vdc
of Outputs: Triple

SPECIAL FEATURES

- Medical safety approvals
- Universal input
- 2" x 4" footprint
- Less than 1U high
- Overpower and short circuit protection
- High efficiency
- High MTBF
- Built in EMI filter (CISPR 22 Class B)
- LED power good indicator
- Input power < 74 watts
- Complies with EN61000 -3-2
- 85 kHz switching frequency
- Dual AC fuses
- UL Class I approved
- LPX100 enclosure kit available
- RoHS compliant

SAFETY

- UL: UL 60601-1
- CSA: CSA-C22.2 No. 601.1-M90
- VDE: EN60601-1
- CE: LVD



Electrical Specifications

| Input | |
|-------------------------------|--|
| Input range | 90 - 264 Vac (wide range) 127 - 300 Vdc |
| Frequency | 47 - 440 Hz |
| Inrush current | < 60 A peak @ 230 Vac, cold start @ 25 °C |
| Efficiency | 80% typical at full load |
| EMI/RFI | FCC Class B conducted; CISPR 22 Class B conducted; EN55022 Class B conducted, EN60601-1-2 |
| Safety ground leakage current | 275 µA @ 50/60 Hz; 264 Vac input |
| Output | |
| Maximum power | 55 W for convection (LPT51, 47.4 W) |
| Hold-up time | 10/20 ms 115/230 Vac input line |
| Overpower protection | Short circuit protection on all outputs. Case overpower protected @ 110-160% of normal rating |
| Overvoltage protection | 30-50% above nominal output |

Environmental Specifications

| | |
|--------------------------------|--|
| Operating temperature | 0 °C to 50 °C ambient. Derate each output as 2.5% per degree from 50 °C to 70 °C. -20 °C startup |
| Storage temperature | -40 °C to +85 °C |
| Electromagnetic susceptibility | Designed to meet EN61000-4; -2, -3, -4, -5, -6, -8, -11 Level 3 |
| Humidity | Operating; non-condensing 10% to 95% RH |
| Vibration | IEC68-2-6 to the levels of IEC721-3-2 |
| MTBF demonstrated | > 550,000 hours at full load and 25 °C ambient conditions |

Ordering Information

| Model Number | Output Voltage | Minimum Load | Maximum Load with Convection Cooling | Peak Load ¹ | Regulation ² | Ripple P/P (PAR) ³ |
|--------------|----------------|--------------|--------------------------------------|------------------------|-------------------------|-------------------------------|
| LPT51-M | +3.3 V | 0.8 A | 8 A | 9 A | ±2% | 50 mV |
| | +5 V | 0.1 A | 3 A | 4 A | ±6% | 50 mV |
| | +12 V | 0 A | 0.5 A | 1 A | ±5% | 120 mV |
| LPT52-M | +5 V | 0.5 A | 8 A | 9 A | ±2% | 50 mV |
| | +12 V | 0.1 A | 3 A | 4 A | ±5% | 120 mV |
| | -12 V | 0 A | 0.5 A | 1 A | ±5% | 120 mV |
| LPT53-M | +5 V | 0.5 A | 8 A | 9 A | ±2% | 50 mV |
| | +15 V | 0.1 A | 2.4 A | 3.2 A | ±5% | 150 mV |
| | -15 V | 0 A | 0.5 A | 0.7 A | ±5% | 150 mV |
| LPT54-M | +5 V | 0.5 A | 8 A | 9 A | ±2% | 50 mV |
| | +24 V | 0.1 A | 1.5 A | 2 A | ±7% | 240 mV |
| | +12 V | 0 A | 0.5 A | 0.7 A | ±5% | 120 mV |

1. Peak current lasting < 15 seconds with a maximum 10% duty cycle.
2. At 25 °C including initial tolerance, line voltage, load currents and output voltages adjusted to factory settings.
3. Peak-to-peak with 20 MHz bandwidth and 10 µF (tantalum capacitor) in parallel with a 0.1 µF capacitor at rated line voltage and load ranges.
4. This product is a Component Power Supply and is only for inclusion by professional installers within other equipment and must not be operated as a standalone product. EMC compliance to appropriate standards must be verified at the system level. This product is for sale to OEMs and System Integrators, including through Distribution Channels. It is not intended for sale to End Users.

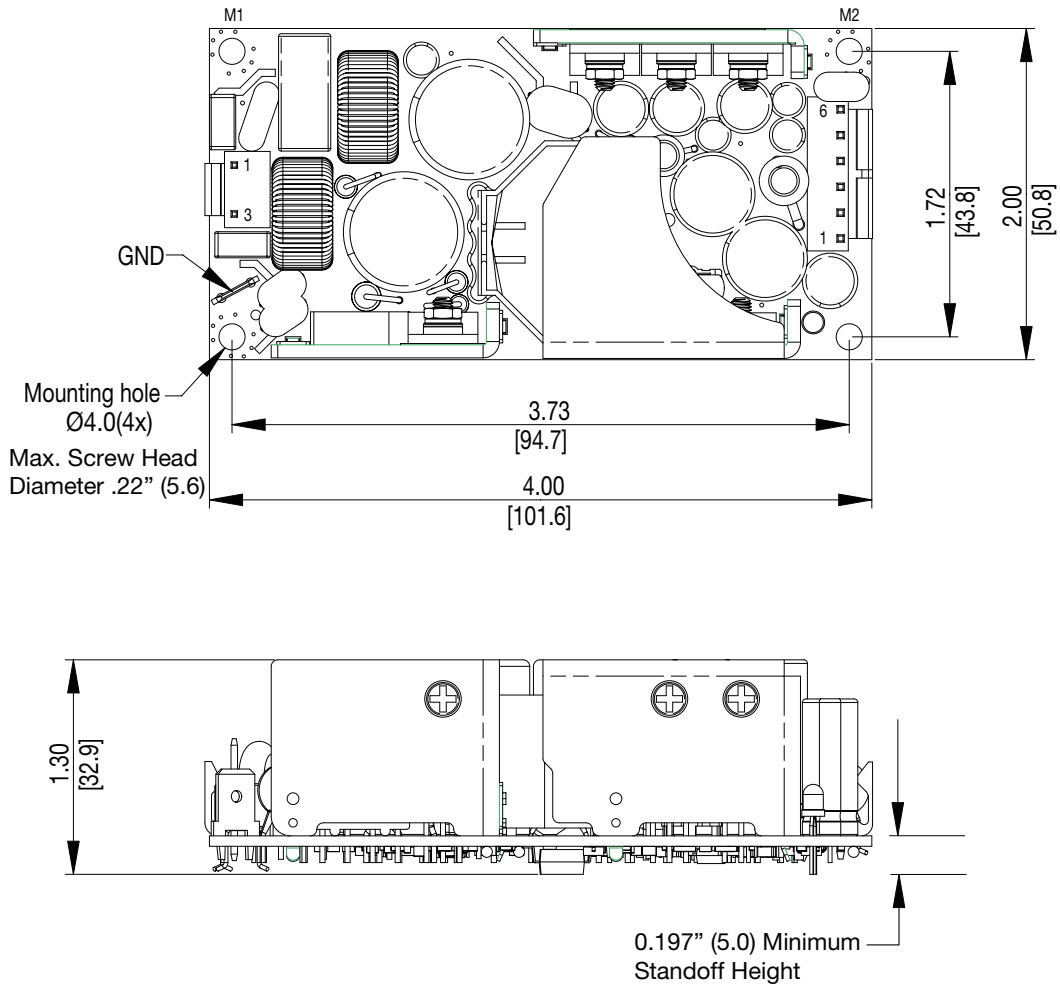
Pin Assignments

| Connector | LPT51-M | LPT52-M | LPT53-M | LPT54-M |
|-----------|---------|---------|---------|---------|
| SK1-1 | Line | Line | Line | Line |
| SK1-3 | Neutral | Neutral | Neutral | Neutral |
| SK2-1 | +3.3 V | +5 V | +5 V | +5 V |
| SK2-2 | +3.3 V | +5 V | +5 V | +5 V |
| SK2-3 | Common | Common | Common | Common |
| SK2-4 | Common | Common | Common | Common |
| SK2-5 | +12 V | -12 V | -15 V | +12 V |
| SK2-6 | 5 V | +12 V | +15 V | +24 V |

Mating Connectors

| | |
|---|---|
| AC Input | Molex 09-50-8031 (USA) 09-91-0300 (UK) PINS: 08-52-0113 |
| DC Outputs | Molex 09-50-8061 (USA) 09-91-0600 (UK) PINS: 08-52-0113 |
| Artesyn Embedded Power Connector Kit #70-841-006, includes all of the above | |

Mechanical Drawing



Notes:

1. Specifications subject to change without notice.
2. All dimensions in inches (mm), tolerance is ± 0.02 " (± 0.5 mm)
3. Mounting holes M1 and M2 should be grounded for EMI purposes.
4. Mounting hole M1 is safety ground connection.
5. Specifications are for convection rating at factory settings at 115 Vac input, 25 °C unless otherwise stated.
6. Warranty: 2 year
7. Weight: 0.45 lbs/0.20 kg

WORLDWIDE OFFICES

Americas

2900 South Diablo Way
Suite B100
Tempe, AZ 85282, USA
+1 888 412 7832

Europe (UK)

Ground Floor Offices, Barbary House
4 Harbour Buildings, Waterfront West
Brierley Hill, West Midlands
DY5 1LN, UK
+44 (0) 1384 842 211

Asia (HK)

14/F, Lu Plaza
2 Wing Yip Street
Kwun Tong, Kowloon
Hong Kong
+852 2176 3333

ARTESYNTM
An Advanced Energy Company

www.artesyn.com

Artesyn Embedded Technologies, Artesyn Embedded Power, Artesyn, and all Artesyn related logos are trademarks and service marks of Artesyn Embedded Technologies, Inc. All other names and logos referred to are trade names, trademarks, or registered trademarks of their respective owners. Specifications are subject to change without notice. © 2019 Artesyn Embedded Technologies, Inc. All rights reserved. For full legal terms and conditions, please visit www.artesyn.com/legal.

For more information: www.artesyn.com
For support: productsupport.ep@artesyn.com

X-ON Electronics

Largest Supplier of Electrical and Electronic Components

Click to view similar products for [Switching Power Supplies](#) category:

Click to view products by [Artesyn Embedded Technologies](#) manufacturer:

Other Similar products are found below :

[70841011](#) [73-551-0005](#) [73-551-0048](#) [PS3E-B12F](#) [PS3E-E12F](#) [AAD600S-4-OP](#) [R22095](#) [KD0204](#) [9021](#) [LDIN100150](#) [LPM000-BBAR-01](#)
[LPX17S-C](#) [EVS57-10R6/R](#) [FP80](#) [FRV7000G](#) [22929](#) [PS3E-F12F](#) [CQM1IA121](#) [40370121900](#) [VI-PU22-EXX](#) [40370121910](#) [LDIN5075](#)
[LPM615-CHAS](#) [LPX140-C](#) [09-160CFG](#) [70841025](#) [VPX3000-CBL-DC](#) [VI-LUL-IU](#) [LPM000-BBAR-05](#) [LPM000-BBAR-08](#) [LPM124-](#)
[OUTA1-48](#) [LPM000-BBAR-07](#) [LPM109-OUTA1-10](#) [LPM616-CHAS](#) [08-30466-1055G](#) [08-30466-2175G](#) [08-30466-2125G](#) [DMB-EWG](#)
[TVQF-1219-18S](#) [6504-226-2101](#) [CQM1IPS01](#) [SP-300-5](#) [CQM1-IPS02](#) [VI-MUL-ES](#) [22829](#) [08-30466-0065G](#) [VI-RU031-EWWX](#) [08-30466-](#)
[0028G](#) [EP3000AC48INZ](#) [VP-C2104853](#)