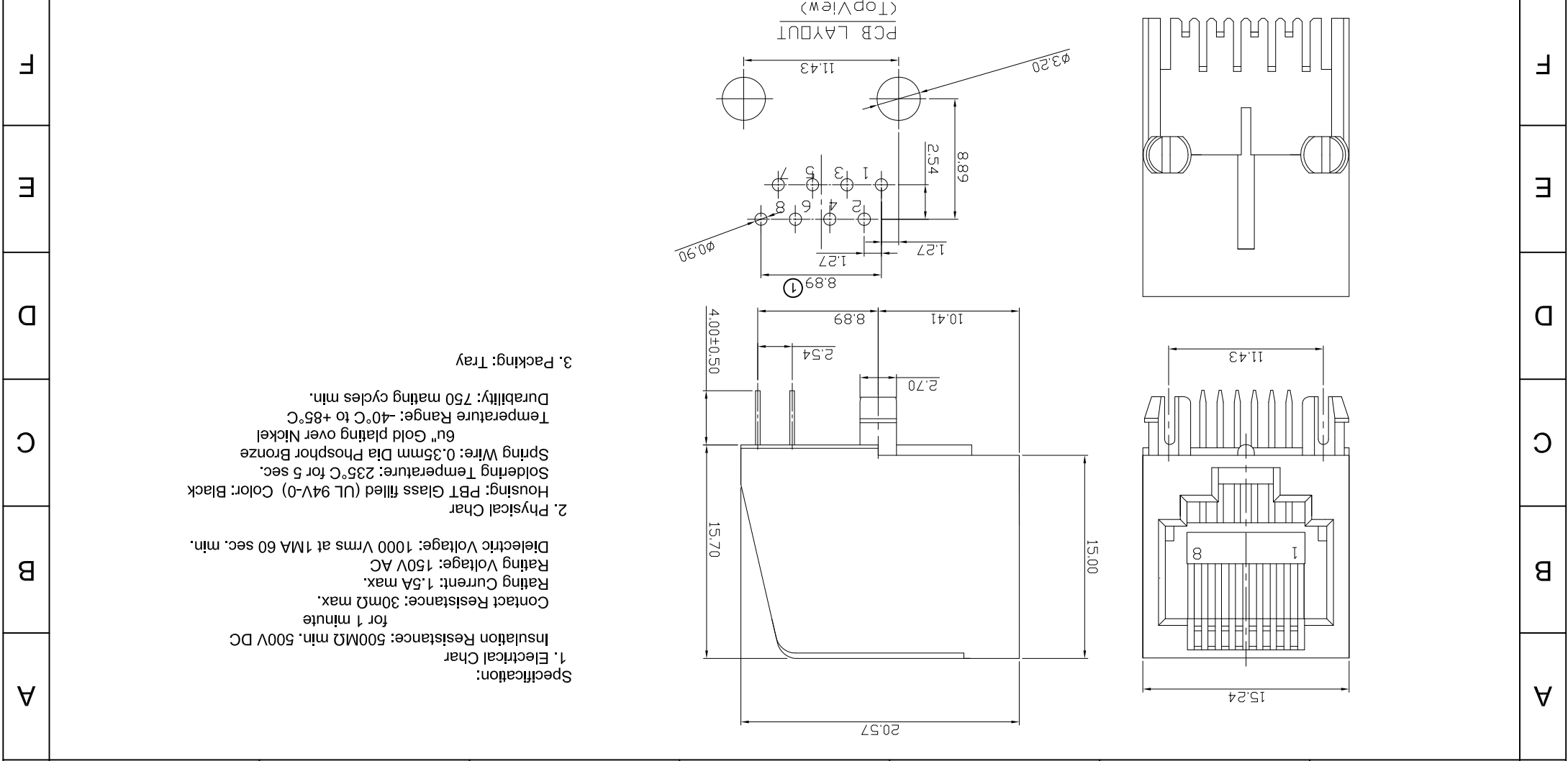


1 2 3 4 5 6 7

H	H	Angle +0°30'	①	Drawn	Modification	Date	Name	Winnle	04.08.2016	Winnle	17.06.2019	Segal	Update the dimension	①	TOL	DIM	.XXX	.XXX	.XXX	.XXX	±0.05	±0.13	±0.20	±0.13	±0.05	Free	Scale	Rohs compliant Unitmm
		①																										
G	G	Customer-No.		ASSMANN WSW-No.		A-2004-2-4-N-R		Date		Approved		17.06.2019		Winnle		Drawing-No.		ASS 7324 CO		Replace		SHEET		H		H		
		Name		Date		Drawn		04.08.2016		Winnle		Customer-No.		ASSMANN WSW-No.		A-2004-2-4-N-R		Drawing-No.		ASS 7324 CO		Replace		SHEET		H		H



1 2 3 4 5 6 7

Specification:
 1. Electrical Char
 Insulation Resistance: 500MΩ min. 500V DC for 1 minute
 Contact Resistance: 30mΩ max.
 Rating Current: 1.5A max.
 Rating Voltage: 150V AC
 Dielectric Voltage: 1000 Vrms at 1MA 60 sec. min.

2. Physical Char
 Housing: PBT Glass filled (UL 94V-0) Color: Black
 Soldering Temperature: 235°C for 5 sec.
 Spring Wire: 0.35mm Dia Phosphor Bronze
 6u" Gold plating over Nickel
 Temperature Range: -40°C to +85°C
 Durability: 750 mating cycles min.

3. Packing: Tray

X-ON Electronics

Largest Supplier of Electrical and Electronic Components

Click to view similar products for [assmann](#) manufacturer:

Other Similar products are found below :

[AU-Y1007-R](#) [AK-320200-100-S](#) [AK-340305-010-W](#) [AK-340603-000-S](#) [AK500-RA-6-0.5-R](#) [AK669/2-18-BLACK-R](#) [AT-K-26-10-B/1000](#)
[AU-Y1008-2-R](#) [AWG28-50/G/300](#) [AWH26G-0232](#) [AB-900](#) [AB-970](#) [AB-984](#) [A-DS 15PP](#) [AK3730X-R](#) [AK579/F-2](#) [A-MCU60010/Y](#) [A-PC2302-030028-1](#) [AT-S-26-8/8/W-7/R](#) [DK-2631-05](#) [DN-91624U](#) [DN-91548U](#) [DK-1511-015/WH](#) [A-MCU60030/R](#) [AWH50G-0202-T-R](#)
[AK500/16-OE-7-0.5](#) [DK-1611-020/B](#) [DK-1511-100/G](#) [AT-K-26-10-W/1000](#) [AWG28-15/G/300](#) [ATUP-P305T](#) [AWP 10-7540-T](#) [AK-330118-100-S](#) [AK-330118-300-S](#) [AK500/U-1-R](#) [AK-SATA-030DL-R](#) [AWG28-16/G/300](#) [AWG28-9/F/300](#) [ADIP16-G-LC-R](#) [AK-330105-300-S](#)
[AK-340406-001-W](#) [A-MCSP60020/B-R](#) [A-MO-8/8-F50-R](#) [AWG28-9/G/300](#) [V25HK](#) [A-LED8-1WAAS-MR7-1](#) [AWP2 16-7240](#) [A-2014-0-4-R](#) [DN-91648U](#) [DN-91524U](#)