

1

2

3

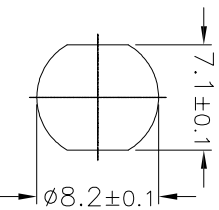
4

5

6

7

A



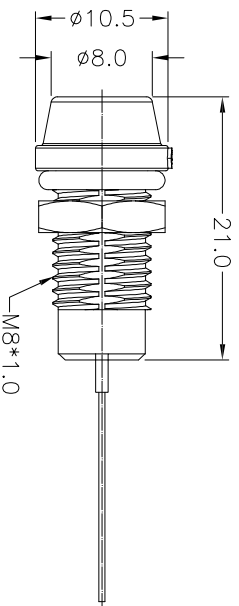
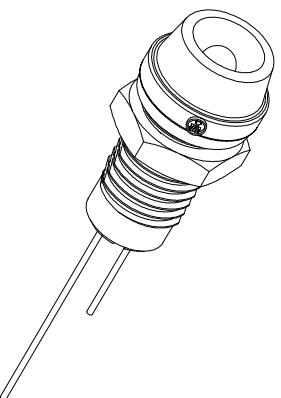
Recommended Panel Cut-Out

A

## Notes:

- Waterproof Rate: IP67
- LED Holder: PC+ABS, Black
- LED Ø3mm, Blue
- O-ring: EPDM, Black
- Screw Nut: Nylon + GF
- Operating Temperature: -40°C ~ +80°C
- For Panel Thickness 6.5mm Max.
- ① Forward Voltage: Typ. 3.5V/ Max. 4(V), Blue.
- Forward Current: Max. 30mA, Blue
- Reverse Voltage: DC 5V
- Luminous Intensity: Min. 1080/ Typ. 2000(Mcd)

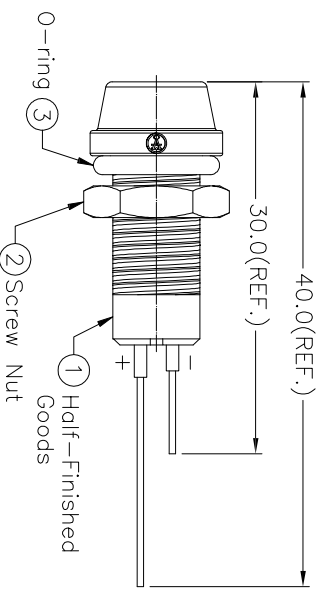
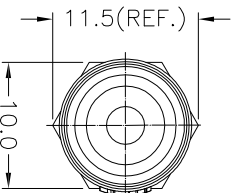
B



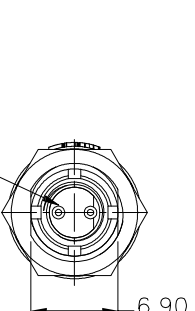
C

D

E



E



F

**RoHS compliant**  
Unit: mm

Customer-No.

ASSMANN WSW-No.  
A-LED8-1BAAS-PR7-1

G

Scale

Free

TOLERANCE

.X

.XX

.XXX

DIM

TOL

±1°

Angle

① Add forward bias current/voltage

03.09.2018

Segal

② Drawn

11.03.2014

Winnie

Date

Name

Winnie

Amy

Drawing-No.

ASS 6226 CO

rev01

**ASSMANN**  
WSW components

Replace

Sheet

1

2

3

4

5

6

7

H

H

## X-ON Electronics

Largest Supplier of Electrical and Electronic Components

*Click to view similar products for [assmann](#) manufacturer:*

Other Similar products are found below :

[AU-Y1007-R](#) [A-DF15-HOOD-WP](#) [A-USB-1](#) [AK-320200-100-S](#) [AK-330109-020-S](#) [AK-340603-000-S](#) [AK500-RA-6-0.5-R](#) [AK669/2-18-BLACK-R](#) [AT-K-26-10-B/1000](#) [AU-Y1008-2-R](#) [AWG28-50/G/300](#) [AWH26G-0232](#) [AB-900](#) [AB-970](#) [AB-984](#) [A-DS 15PP](#) [AK-330107-010-S](#) [AK-330505-000-S](#) [AK3730X-R](#) [AK579/F-2](#) [A-MCU60010/Y](#) [A-PC2302-030028-1](#) [AT-S-26-8/8/W-7/R](#) [AWH-24G-E202-IDC](#) [DK-2631-05](#) [DN-91624U](#) [DN-91548U](#) [DK-1511-015/WH](#) [A-MCU60030/R](#) [AWH50G-0202-T-R](#) [AK500/16-OE-7-0.5](#) [AK500/14-OE-5-2](#) [DK-1611-020/B](#) [DK-1511-100/G](#) [AK-320400-002-S](#) [AT-K-26-6-B/500](#) [AK-400102-008-R](#) [AT-K-26-6-W/100](#) [AWP 10-7540-T](#) [AK-330118-100-S](#) [AK-330118-300-S](#) [AK-340102-010-W](#) [AK500/U-1-R](#) [AK-SATA-030DL-R](#) [AWG28-16/G/300](#) [AWG28-9/F/300](#) [ADIP16-G-LC-R](#) [AK-310203-018-E](#) [AK-330105-300-S](#) [AK-340406-001-W](#)