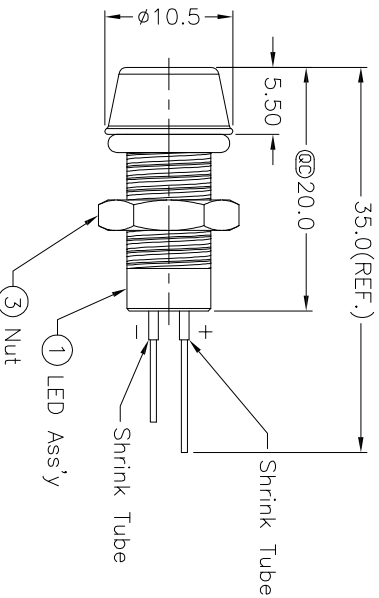
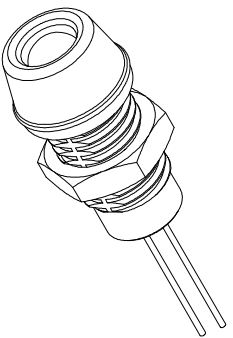
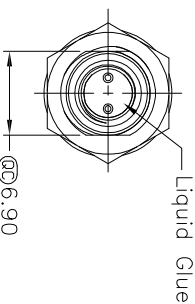
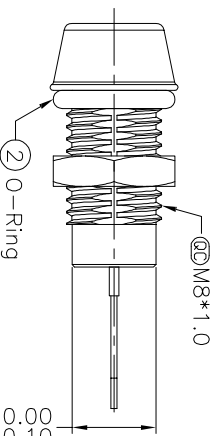
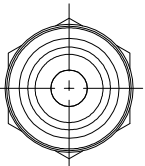


Recommended Panel Cut-Out



Notes:
 @@ Important Dimension To Check
 Waterproof Rate: IP67
 LED Holder: Brass, Nickel Plating
 LED: ø 3 mm, Green
 Gasket: EPDM, Black
 Screw Nut: Brass, Nickel Plating
 Operating Voltage: DC 4V
 Operating Temperature: -40~+80°C
 For Panel Thickness 6.5mm Max.
 ① Nut Torque: 2.5~3.5kgf.cm



RoHS compliant

Scale	Free							
TOLERANCE								
.X	±0.25				Drawn	11.03.2014	Winnie	
.XX	±0.10							
.XXX	±0.05							
Angle	±1°	①	Add the nut torque	07.05.2014	Winnie			
		②	Drawn	11.03.2014	Winnie			
			Id.					
			Modification					

Customer-No.

ASSMANN WSW-No.
A-LED8-1GAAS-MR7-1

Drawing-No.

ASS 6228 CO

rev01

Replace

Sheet

1

2

3

4

5

6

7

H

G

F

E

D

C

B

A

1

2

3

4

5

6

7

A

B

C

D

E

F

H

X-ON Electronics

Largest Supplier of Electrical and Electronic Components

Click to view similar products for [assmann](#) manufacturer:

Other Similar products are found below :

[AU-Y1007-R](#) [A-DF15-HOOD-WP](#) [A-USB-1](#) [AK-320200-100-S](#) [AK-330109-020-S](#) [AK-340603-000-S](#) [AK500-RA-6-0.5-R](#) [AK669/2-18-BLACK-R](#) [AT-K-26-10-B/1000](#) [AU-Y1008-2-R](#) [AWG28-50/G/300](#) [AWH26G-0232](#) [AB-900](#) [AB-970](#) [AB-984](#) [A-DS 15PP](#) [AK-330107-010-S](#) [AK-330505-000-S](#) [AK3730X-R](#) [AK579/F-2](#) [A-MCU60010/Y](#) [A-PC2302-030028-1](#) [AT-S-26-8/8/W-7/R](#) [AWH-24G-E202-IDC](#) [DK-2631-05](#) [DN-91624U](#) [DN-91548U](#) [DK-1511-015/WH](#) [A-MCU60030/R](#) [AWH50G-0202-T-R](#) [AK500/16-OE-7-0.5](#) [AK500/14-OE-5-2](#) [DK-1611-020/B](#) [DK-1511-100/G](#) [AK-320400-002-S](#) [AT-K-26-6-B/500](#) [AK-400102-008-R](#) [AT-K-26-6-W/100](#) [AWP 10-7540-T](#) [AK-330118-100-S](#) [AK-330118-300-S](#) [AK-340102-010-W](#) [AK500/U-1-R](#) [AK-SATA-030DL-R](#) [AWG28-16/G/300](#) [AWG28-9/F/300](#) [ADIP16-G-LC-R](#) [AK-310203-018-E](#) [AK-330105-300-S](#) [AK-340406-001-W](#)