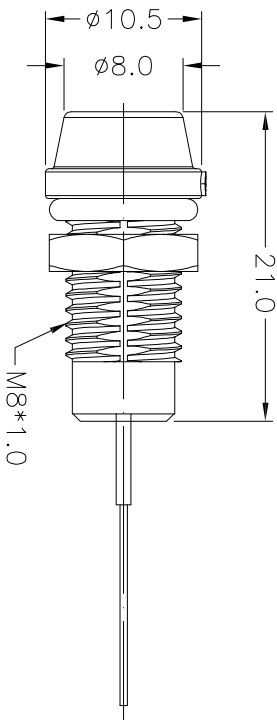
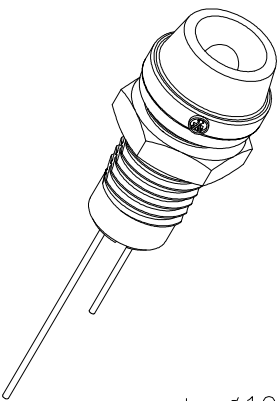
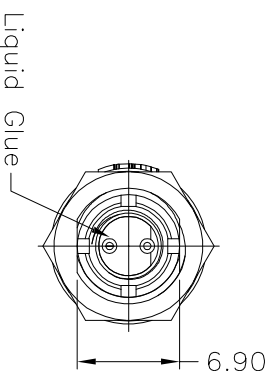
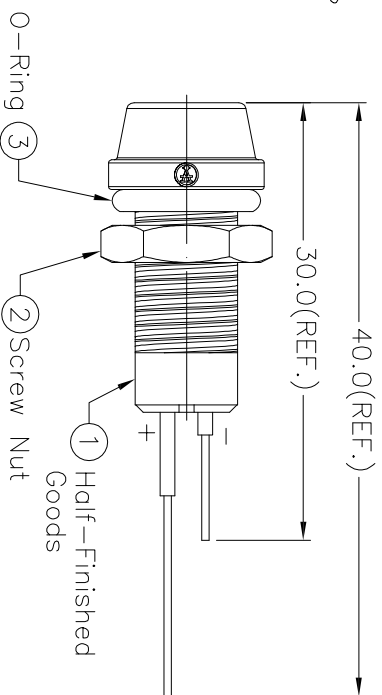
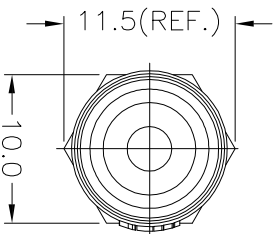


Recommended Panel Cut-Out



- Notes:
- Waterproof Rate: IP67
 - LED Holder: PC+ABS, Black
 - LED Ø3mm, Green
 - O-ring: EPDM, Black
 - Screw Nut: Nylon + GF
 - Operating Temperature: -40°C ~ +80°C
 - ① For Panel Thickness 6.5mm Max.
 - Forward Voltage: Typ. 2.2V/ Max. 2.4(V), Green.
 - Forward Current: Max. 30mA, Green.
 - Reverse Voltage: DC 5V
 - Luminous Intensity: Min. 2950/ Typ. 5000(Mcd)



RoHS compliant
Unit: mm

Scale	Free TOLERANCE	Free	Angle
.X	±0.25		±1°
.XX	±0.1		
.XXX	±0.05		
DIM	TOL		
① Add forward bias current/voltage			
② Drawn			
Id.			
Modification			
Date			
Name			
Date			
Name			
Date			
Name			

ASSMANN
components

Customer-No.	ASSMANN WSW-No.	A-LED8-1GAAS-PR7-1
Drawing-No.	ASS 6229 CO	rev01
Replace		Sheet

1 2 3 4 5 6 7

A B C D E F G H

X-ON Electronics

Largest Supplier of Electrical and Electronic Components

Click to view similar products for [assmann](#) manufacturer:

Other Similar products are found below :

[AU-Y1007-R](#) [A-DF15-HOOD-WP](#) [A-USB-1](#) [AK-320200-100-S](#) [AK-330109-020-S](#) [AK-340603-000-S](#) [AK500-RA-6-0.5-R](#) [AK669/2-18-BLACK-R](#) [AT-K-26-10-B/1000](#) [AU-Y1008-2-R](#) [AWG28-50/G/300](#) [AWH26G-0232](#) [AB-900](#) [AB-970](#) [AB-984](#) [A-DS 15PP](#) [AK-330107-010-S](#) [AK-330505-000-S](#) [AK3730X-R](#) [AK579/F-2](#) [A-MCU60010/Y](#) [A-PC2302-030028-1](#) [AT-S-26-8/8/W-7/R](#) [AWH-24G-E202-IDC](#) [DK-2631-05](#) [DN-91624U](#) [DN-91548U](#) [DK-1511-015/WH](#) [A-MCU60030/R](#) [AWH50G-0202-T-R](#) [AK500/16-OE-7-0.5](#) [AK500/14-OE-5-2](#) [DK-1611-020/B](#) [DK-1511-100/G](#) [AK-320400-002-S](#) [AT-K-26-6-B/500](#) [AK-400102-008-R](#) [AT-K-26-6-W/100](#) [AWP 10-7540-T](#) [AK-330118-100-S](#) [AK-330118-300-S](#) [AK-340102-010-W](#) [AK500/U-1-R](#) [AK-SATA-030DL-R](#) [AWG28-16/G/300](#) [AWG28-9/F/300](#) [ADIP16-G-LC-R](#) [AK-310203-018-E](#) [AK-330105-300-S](#) [AK-340406-001-W](#)