

NOTES:

ELECTRICAL:

1. VOLTAGE RATING : 125 VAC
2. CURRENT RATING : 1.5 AMP.
3. CONTACT RESISTANCE : 100 MILLIOHMS MAX.
4. INSULATION RESISTANCE : 1000 MEGOHMS MIN. @ 500 VDC.
5. DIELECTRIC STRENGTH : 750 VAC 60HZ, 1MIN.
6. CATEGORY 5e CHARACTERISTIC:

Frequency	Near-End Cross Talk dB, MIN.	Return Loss dB, MIN.	Attenuation dB, MAX.
1.0 MHZ	65.0	35.5	0.1
4.0 MHZ	65.0	35.5	0.1
8.0 MHZ	64.9	35.5	0.1
10.0 MHZ	63.0	35.5	0.1
16.0 MHZ	58.9	35.5	0.2
20.0 MHZ	57.0	34.0	0.2
25.0 MHZ	55.0	32.0	0.2
31.25 MHZ	53.1	30.1	0.2
62.5 MHZ	47.1	24.0	0.3
100.0 MHZ	43.0	20.0	0.4

A

B

C

D

E

F

A

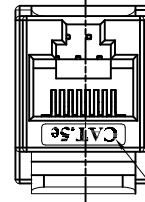
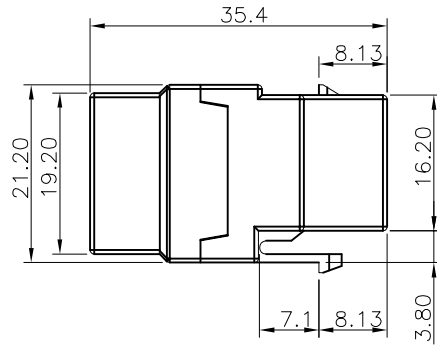
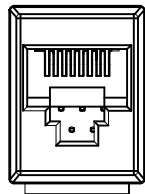
B

C

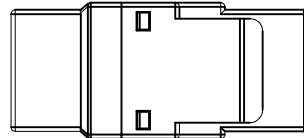
D

E

F



LOGO ABOVE THE SURFACE 0.20mm



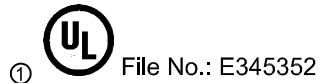
MECHANICAL:

1. HOUSING MATERIAL : PC UL94V-0
2. INSERT MATERIAL : GLASS FILLED POLYESTER UL94V-0 BK.
3. PCB MATERIAL : FR-4 THICKNESS 1.6mm
4. CONTACT MATERIAL : PHOSPHOR BRONZE STAMP PIN t=0.35mm
- ② 5. PLATING : 50u" GOLD Plating over Nickel
- ③ 6. OPERATING LIFE : 750 CYCLES MIN.

ENVIRONMENTAL:

1. STORAGE: -40°C TO +85°C.
 2. OPERATION: 0°C TO 70°C.
- CONFORMING TO TIA/EIA 568B
 MATES WITH MODULAR PLUG CONFORMING TO
 FCC PART 68, SUBPART F.

RoHS compliant
Unit: mm



Scale	Free						Date	Name	Customer-No.
TOLERANCE						Drawn	02.07.2013	Winnie	
.X	±0.20								
.XX	±0.15	③	Add operating life	12.03.2019	Amy	Approved	12.03.2019	Amy	ASSMANN WSW-No.
.XXX	±0.10	②	Add plating requirement	29.08.2018	Segal				A-TA3534
DIM	TOL	①	Add UL	24.03.2017	Amy				Drawing-No.
Angle	±5°	①							ASS 5822 CO
		④	Drawn	02.07.2013	Winnie				rev03
Angle	TOL	Id.	Modification	Date	Name	ASSMANN WSW components		Replace	Sheet

G

H

G

H

1

2

3

4

5

6

7

X-ON Electronics

Largest Supplier of Electrical and Electronic Components

Click to view similar products for [assmann](#) manufacturer:

Other Similar products are found below :

[AU-Y1007-R](#) [A-DF15-HOOD-WP](#) [A-USB-1](#) [AK-320200-100-S](#) [AK-340603-000-S](#) [AK500-RA-6-0.5-R](#) [AK669/2-18-BLACK-R](#) [AT-K-26-10-B/1000](#) [AU-Y1008-2-R](#) [AWG28-50/G/300](#) [AWH26G-0232](#) [AB-900](#) [AB-970](#) [AB-984](#) [A-DS 15PP](#) [AK3730X-R](#) [AK579/F-2](#) [A-MCU60010/Y](#) [A-PC2302-030028-1](#) [AT-S-26-8/8/W-7/R](#) [AWH-24G-E202-IDC](#) [DK-2631-05](#) [DN-91624U](#) [DN-91548U](#) [DK-1511-015/WH](#) [A-MCU60030/R](#) [AWH50G-0202-T-R](#) [AK500/16-OE-7-0.5](#) [AK500/14-OE-5-2](#) [DK-1611-020/B](#) [DK-1511-100/G](#) [AK-320400-002-S](#) [AT-K-26-6-B/500](#) [AK-400102-008-R](#) [AT-K-26-6-W/100](#) [AWP 10-7540-T](#) [AK-330118-100-S](#) [AK-330118-300-S](#) [AK-340102-010-W](#) [AK500/U-1-R](#) [AK-SATA-030DL-R](#) [AWG28-16/G/300](#) [AWG28-9/F/300](#) [ADIP16-G-LC-R](#) [AK-310203-018-E](#) [AK-330105-300-S](#) [AK-340406-001-W](#) [A-MCSSP60020/B-R](#) [A-MO-8/8-F50-R](#) [AWG28-20/G/300](#)