

1

2

3

4

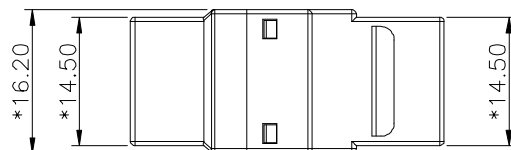
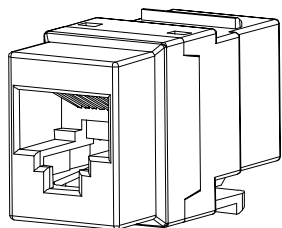
5

6

7

A

A

**ELECTRICAL:**

1. VOLTAGE RATING	: 125 VAC.
2. CURRENT RATING	: 1.5 AMP.
3. CONTACT RESISTANCE	: 100 MILLIOHMS MAX.
4. INSULATION RESISTANCE	: 1000 MEGOHMS MIN. @ 500 VDC.
5. DIELECTRIC STRENGTH	: 750 VAC 60Hz, 1MIN.

B

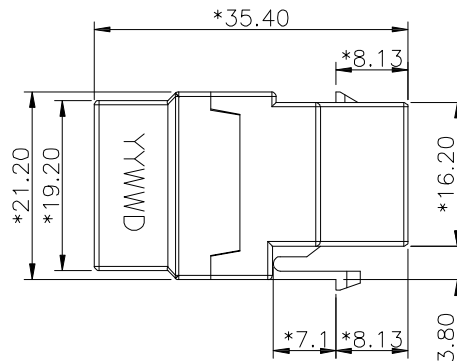
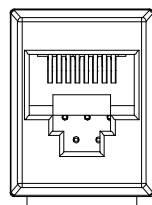
B

MECHANICAL:

1. HOUSING MATERIAL	: PC. UL94V-0. BLACK
2. CONTACT MATERIAL	: PHOSPHOR BRONZE T=0.35mm.
3. PLATING	: 50U" GOLD PLATING OVER NICKEL.
4. INSERT MATERIAL	: GLASS FILLED POLYDSTER UL94V-0.
5. PCB MATERIAL	: FR-4 THICKNESS 1.6mm.
③ 6. OPERATING LIFE	: 750 CYCLES MIN.

C

C

**ENVIRONMENTAL:**

1. STORAGE	: -40°C TO +85°C.
2. OPERATION	: 0°C TO +70°C.

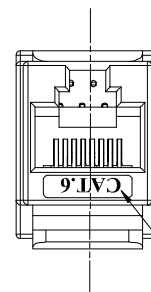
① Conforming to TIA/EIA 568B.2-1

D

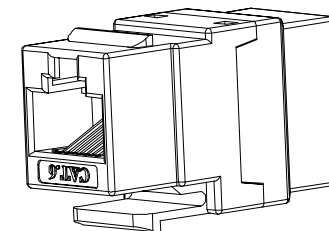
D

E

E



LOGO ABOVE THE SURFACE 0.20mm



F

F

RoHS compliant
Unit: mm



② File No.: E345352

Scale	Free					Date	Name	Customer-No.
TOLERANCE					Drawn	22.09.2014	Joanna	
.X	±0.20							
.XX	±0.15	③	Add operating life	12.03.2019	Amy	Approved	12.03.2019	Amy
.XXX	±0.10	②	Add UL	24.03.2017	Amy			
DIM	TOL							
Angle	±5°	①	Add information	16.02.2015	Hellwig			
		④	Drawn	22.09.2014	Joanna			
		Id.	Modification	Date	Name			Drawing-No.
								ASSMANN WSW-No.
								A-TA3535
							ASS 6588 CO	rev03
							Replace	Sheet

H

H

1

2

3

4

5

6

7

SV3669

X-ON Electronics

Largest Supplier of Electrical and Electronic Components

Click to view similar products for [assmann](#) manufacturer:

Other Similar products are found below :

[AU-Y1007-R](#) [A-DF15-HOOD-WP](#) [A-USB-1](#) [AK-320200-100-S](#) [AK-340603-000-S](#) [AK500-RA-6-0.5-R](#) [AK669/2-18-BLACK-R](#) [AT-K-26-10-B/1000](#) [AU-Y1008-2-R](#) [AWG28-50/G/300](#) [AWH26G-0232](#) [AB-900](#) [AB-970](#) [AB-984](#) [A-DS 15PP](#) [AK3730X-R](#) [AK579/F-2](#) [A-MCU60010/Y](#) [A-PC2302-030028-1](#) [AT-S-26-8/8/W-7/R](#) [AWH-24G-E202-IDC](#) [DK-2631-05](#) [DN-91624U](#) [DN-91548U](#) [DK-1511-015/WH](#) [A-MCU60030/R](#) [AWH50G-0202-T-R](#) [AK500/16-OE-7-0.5](#) [AK500/14-OE-5-2](#) [DK-1611-020/B](#) [DK-1511-100/G](#) [AK-320400-002-S](#) [AT-K-26-6-B/500](#) [AK-400102-008-R](#) [AT-K-26-6-W/100](#) [AWP 10-7540-T](#) [AK-330118-100-S](#) [AK-330118-300-S](#) [AK-340102-010-W](#) [AK500/U-1-R](#) [AK-SATA-030DL-R](#) [AWG28-16/G/300](#) [AWG28-9/F/300](#) [ADIP16-G-LC-R](#) [AK-310203-018-E](#) [AK-330105-300-S](#) [AK-340406-001-W](#) [A-MCSSP60020/B-R](#) [A-MO-8/8-F50-R](#) [AWG28-20/G/300](#)