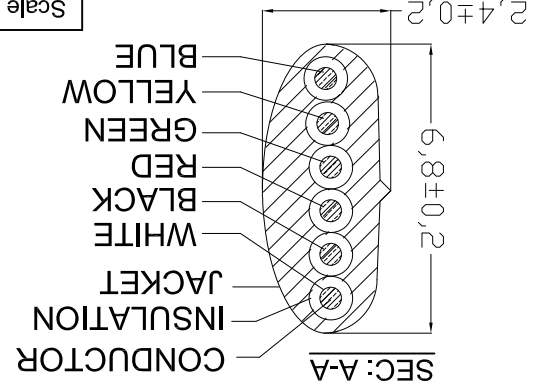
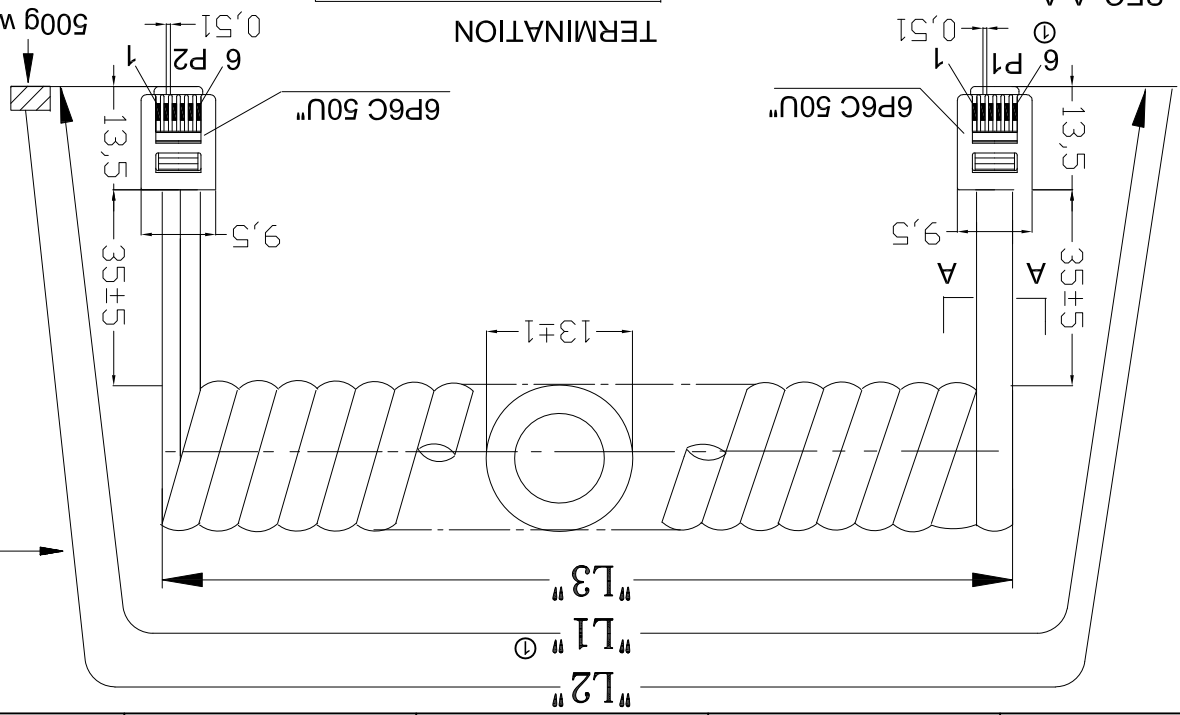


H	H	G	G	F	F	F	D	C	B	A	1	2	3	4	5	6	7	Replace	W&S components	Name	Date	Modification	Id.	±2°	Angle		
																		Drawing-No.	ASSMANN	Amy	18.12.2017	Drawn	①				
G	G	F	F	F	F	D	C	B	A	1	2	3	4	5	6	7	rev01	ASSMANN 8163 CA	Segal	08.05.2019	Update the notes, the pin assignment and add the cut length	①	TOL	DIM			
																	Customer-No.	ASSMANN WSW-No.	Amy	18.12.2017	Drawn		.x	.xx			
																		AT-C-26-6/6/X-XX/R	ASSMANN WSW-No.	Approved	08.05.2019	Amy	±0.20	±0.50	TOLERANCE	Scale	Free
																		Customer-No.	ASSMANN WSW-No.	Drawn	18.12.2017	Amy					

Unit: mm
RoHS compliant



P1	White	1
P2	Black	2
	Red	3
	Green	4
	Yellow	5
	Blue	6



TERMINATION

Order code: AT-C-26-6/6/X-XX/R

Order color:
B: Black
W: White
S: Silver

Length	Retracted	Extended	Cut
Code	Length(L3)	Length(L2)	Length(L1)
5	540±50	5.0FT-5.75FT	2600-2700
7	740±50	7.0FT-8.05FT	3700-3900
10	1000±50	10.0FT-11.5FT	5000-5200
12	1300±50	12.0FT-13.8FT	6400-6600
14	1350±50	14.0FT-16.1FT	6900-7100
25	3400±50	25.0FT-28.75FT	13200-13400

- ① Material: Housing-Polycarbonate, clear.
- ① Terminal-0.36[.014] thick phosphor bronze.
- ① Thick gold in localized gold plate.
- ① Area, Gold flash over the remainder.
- ① Over 2.54mm[.00100] thick nickel underplate.
- ① Conductor: [26AWG(0.12x12) BARE COPPER]x6C.
- ① Insulation: (PP6331 ID:0.95-1.0)x6C.
- ① Jacket: PVC NOUL 80P.
- ① Package: Individual PE Bag.

Note for plug:

Extended length is with 500g of force

X-ON Electronics

Largest Supplier of Electrical and Electronic Components

Click to view similar products for [assmann](#) manufacturer:

Other Similar products are found below :

[AU-Y1007-R](#) [AK-320200-100-S](#) [AK-330114-050-S](#) [AK-340100-020-S](#) [AK-340305-010-W](#) [AK-340305-030-W](#) [AK-340603-000-S](#) [AK500-RA-6-0.5-R](#) [AK669/2-18-BLACK-R](#) [AT-K-26-10-B/1000](#) [AU-Y1008-2-R](#) [AWG28-50/G/300](#) [AWH26G-0232](#) [AB-900](#) [AB-970](#) [AB-984](#) [A-DS 15PP](#) [AK-320200-030-S](#) [AK-340100-030-S](#) [AK-340301-020-S](#) [AK-340301-030-S](#) [AK-340305-020-W](#) [AK-340602-000-S](#) [AK3730X-R](#) [AK579/F-2](#) [A-MCU60010/Y](#) [A-PC2302-030028-1](#) [A-LED8-1WAAS-MR7-1](#) [AT-S-26-8/8/W-7/R](#) [DN-91524U](#) [DK-2631-05](#) [DN-91624U](#) [DN-91548U](#) [DK-1511-015/WH](#) [A-MCU60030/R](#) [AWH50G-0202-T-R](#) [AK500/16-OE-7-0.5](#) [DK-1611-020/B](#) [DK-1511-100/G](#) [AK-300136-018-S](#) [AT-K-26-10-W/1000](#) [AWG28-15/G/300](#) [ATUP-P305T](#) [AWP 10-7540-T](#) [AK-330118-100-S](#) [AK-330118-300-S](#) [AK500/U-1-R](#) [AK-SATA-030DL-R](#) [AWG28-16/G/300](#) [AWG28-9/F/300](#)