

1

2

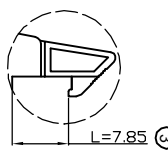
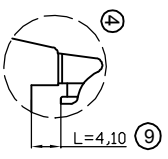
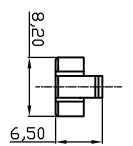
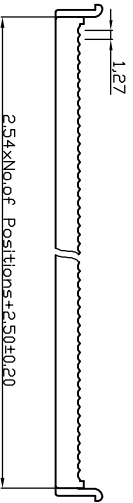
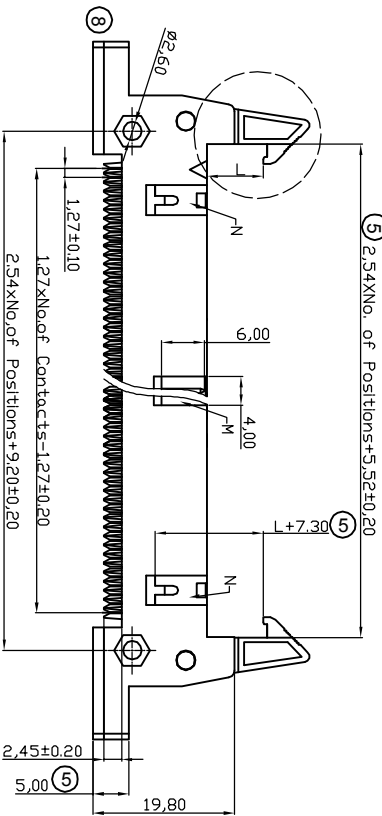
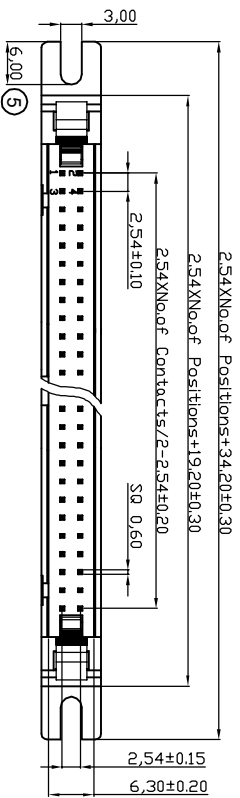
3

4

5

6

7



**NOTES:**

**MATERIAL**  
 1. Insulator Material: PBT+30%G.F. (UL94V-0), Grey  
 2. Contact Material: Brass  
 3. Contact Plating : 1u" Au selective Over Ni ELECTRICAL  
 1. Current Rating : 3.0 AMP  
 2. Withstand Voltage : 1000V AC/minute  
 3. Contact Resistance : 20mΩ max  
 4. Insulation Resistance: 1000MΩ min  
**ENVIRONMENTAL**  
 1. Operation Temperature: -40°C to +105°C  
 2. Packing : Tube  
 3. 10P~18P with slot "M" without slot "N"  
 20P~64P with slot "W" and "N"

Ordering Information  
**AWH XXG-E2X2-IDC**

No. of Contacts:  
 10, 14, 18, 20, 26  
 30, 34, 40, 50, 60, 64

Latch Type  
 0 - without latch  
 2 - with short latches  
 3 - with long latches

**RoHS compliant**  
 Unit: mm



Scale	Free	(9)
TOLERANCE		Correct the dimension L =4.10mm
X.X	±0.40	Modify the shape of insulator
X.XX	±0.25	Change the packing tray into tube
X.XXX	±0.15	Add UL file no.
ANGLE	±3°	Update
DIM	TOL	Id.
		Correct drawing of short latch
		Modification

Date	Name	Date	Name
20.12.2017	Winnie	29.05.2006	Helwig
05.06.2017	Winnie	20.19.2017	Winnie
21.09.2015	Winnie		
12.12.2013	Amy		
03.04.2013	Winnie		
05.05.2010	Dean		

**ASSMANN**  
 WSW/ components

Customer-No.	Drawing-No.	Replace
ASSMANN WSW-No.	ASSMANN WSW-No.	Replace
AWH XXG-E2X2-IDC	AWH XXG-E2X2-IDC	ASS 0532 CO
		rev09
		Sheet

1

2

3

4

5

6

7

A  
B  
C  
D  
E  
F  
G  
H

## X-ON Electronics

Largest Supplier of Electrical and Electronic Components

*Click to view similar products for [assmann](#) manufacturer:*

Other Similar products are found below :

[AU-Y1007-R](#) [AK-320200-100-S](#) [AK-330114-050-S](#) [AK-340100-020-S](#) [AK-340305-010-W](#) [AK-340305-030-W](#) [AK-340603-000-S](#) [AK500-RA-6-0.5-R](#) [AK669/2-18-BLACK-R](#) [AT-K-26-10-B/1000](#) [AU-Y1008-2-R](#) [AWG28-50/G/300](#) [AWH26G-0232](#) [AB-900](#) [AB-970](#) [AB-984](#) [A-DS 15PP](#) [AK-320200-030-S](#) [AK-340100-030-S](#) [AK-340301-020-S](#) [AK-340301-030-S](#) [AK-340305-020-W](#) [AK-340602-000-S](#) [AK3730X-R](#) [AK579/F-2](#) [A-MCU60010/Y](#) [A-PC2302-030028-1](#) [A-LED8-1WAAS-MR7-1](#) [AT-S-26-8/8/W-7/R](#) [DN-91524U](#) [DK-2631-05](#) [DN-91624U](#) [DN-91548U](#) [DK-1511-015/WH](#) [A-MCU60030/R](#) [AWH50G-0202-T-R](#) [AK500/16-OE-7-0.5](#) [DK-1611-020/B](#) [DK-1511-100/G](#) [AK-300136-018-S](#) [AT-K-26-10-W/1000](#) [AWG28-15/G/300](#) [ATUP-P305T](#) [AWP 10-7540-T](#) [AK-330118-100-S](#) [AK-330118-300-S](#) [AK500/U-1-R](#) [AK-SATA-030DL-R](#) [AWG28-16/G/300](#) [AWG28-9/F/300](#)