

1

2

3

4

5

6

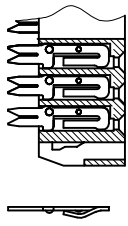
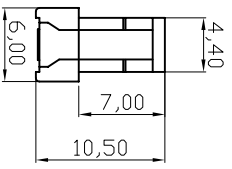
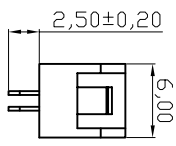
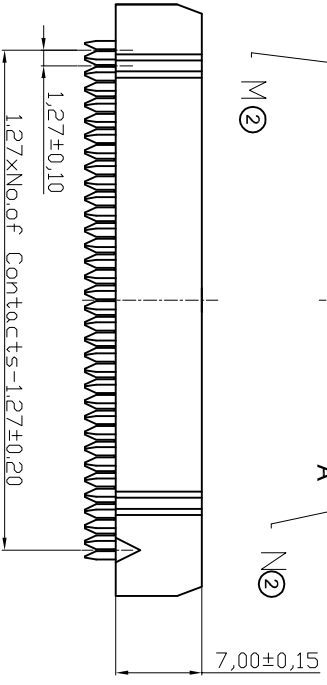
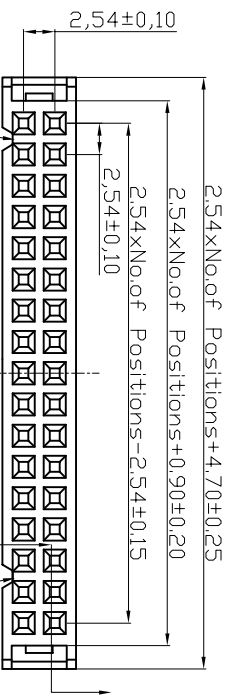
7

A

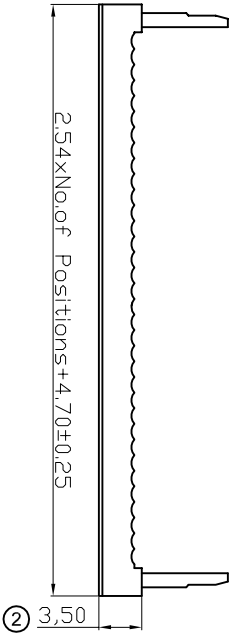
A

**NOTES:**  
**MATERIAL**  
 1. Insulator Material: PBT +30% GF (UL94V-0)  
 2. Contact Material : Brass  
 3. Contact Plating :  
 AWP xx-8240-T : Gold flash over Ni  
 AWP xx-8540-T : Tin over Ni

**ELECTRICAL**  
 1. Current Rating : 3AMP  
 2. Withstand Voltage : 1000V AC/DC  
 3. Contact Resistance : 20mΩ max  
 4. Insulation Resistance: 1000MΩ min  
**ENVIRONMENTAL**  
 1. Operation Temperature: -40°C to +105°C  
 2. Packing: Tray



Section A-A



**RoHS compliant**

Scale	1:1								
TOLERANCE									
X.X	±0,40				Drawn	21.12.2009	Dean		
X.XX	±0,25				Approved	28.03.2013	Winnie		
X.XXX	±0,15								
Angle	±3°								
		②	Drawn						
		①	Drawn						
			Modification						



Customer-No.  
 ASSMANN WSW-No.  
**AWP XX-8X40-T**

Drawing-No.  
**ASS 2261A CO rev02**

Replace Sheet

1

2

3

4

5

6

7

G

G

H

H

F

F

E

E

D

D

C

C

B

B

## **X-ON Electronics**

Largest Supplier of Electrical and Electronic Components

*Click to view similar products for [assmann](#) manufacturer:*

Other Similar products are found below :

[AU-Y1007-R](#) [A-DF15-HOOD-WP](#) [A-USB-1](#) [AK-320200-100-S](#) [AK-340603-000-S](#) [AK500-RA-6-0.5-R](#) [AK669/2-18-BLACK-R](#) [AT-K-26-10-B/1000](#) [AU-Y1008-2-R](#) [AWG28-50/G/300](#) [AWH26G-0232](#) [AB-900](#) [AB-970](#) [AB-984](#) [A-DS 15PP](#) [AK3730X-R](#) [AK579/F-2](#) [A-MCU60010/Y](#) [A-PC2302-030028-1](#) [AT-S-26-8/8/W-7/R](#) [AWH-24G-E202-IDC](#) [DK-2631-05](#) [DN-91624U](#) [DN-91548U](#) [DK-1511-015/WH](#) [A-MCU60030/R](#) [AWH50G-0202-T-R](#) [AK500/16-OE-7-0.5](#) [AK500/14-OE-5-2](#) [DK-1611-020/B](#) [DK-1511-100/G](#) [AK-320400-002-S](#) [AT-K-26-6-B/500](#) [AK-400102-008-R](#) [AT-K-26-6-W/100](#) [AWP 10-7540-T](#) [AK-330118-100-S](#) [AK-330118-300-S](#) [AK-340102-010-W](#) [AK500/U-1-R](#) [AK-SATA-030DL-R](#) [AWG28-16/G/300](#) [AWG28-9/F/300](#) [ADIP16-G-LC-R](#) [AK-310203-018-E](#) [AK-330105-300-S](#) [AK-340406-001-W](#) [A-MCSSP60020/B-R](#) [A-MO-8/8-F50-R](#) [AWG28-9/G/300](#)