

085/085M

General Purpose and Medical Type Filtered Power Entry Modules with a Switch



085 Series

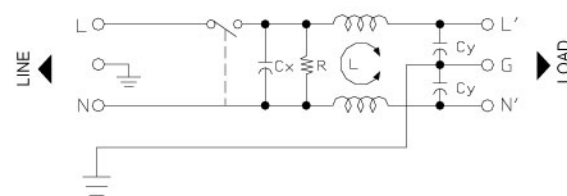
General Purpose Filtered Power Entry Modules with a Switch

Features

Compact integrated power entry module with on/off switch. Faston tabs and other terminal options available.

Typical Applications

Compact Electronic Equipment, 1U rack assemblies.



085- Electrical Schematic

085M Series

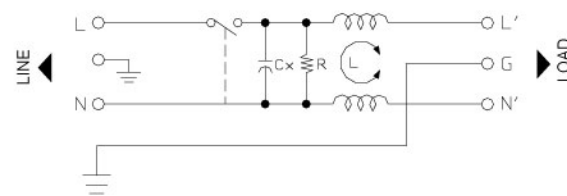
Low Leakage Current, Medical Type Filtered Power Entry Modules with a Switch

Features

Low Leakage current, Compact integrated power entry module with on/off switch. Faston tabs and other terminal options available.

Typical Applications

Medical type and compact electronic equipment and applications requiring low leakage current.



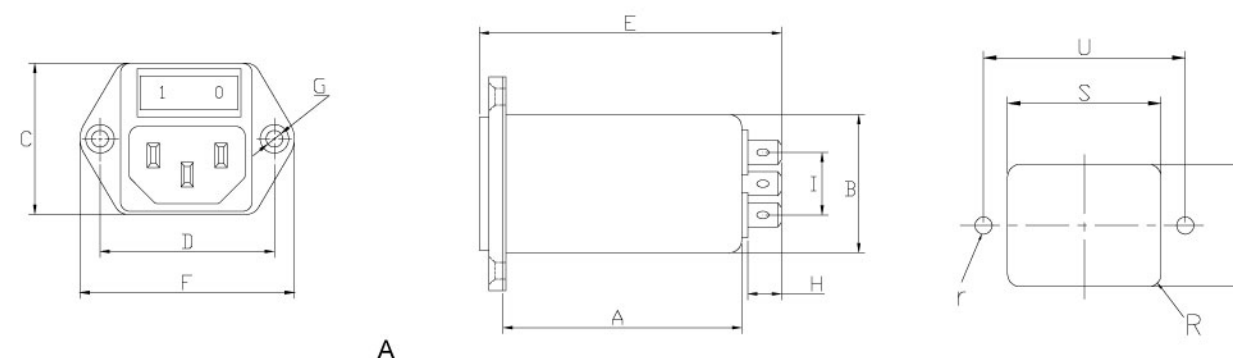
085M - Electrical Schematic

Technical Data

085 Series		Leakage Current 085 Series	
Rated Voltage Max. (V)	250VAC	@ 250 VAC 50 Hz	0.42 mA Max.
Rated Current (A)	1 - 10A @ 40°C	@ 115 VAC 60 Hz	0.23 mA Max.
Operating Frequency (Hz)	50 / 60Hz	Leakage Current 085M Series	
Hipot Rating		@ 250 VAC 50 Hz	10µA Max.
Line to Line	1450V DC	@ 115 VAC 60 Hz	5µA Max.
Line to Ground	2250V DC	IP Standard	51-52
Case	Plated steel	Climatic category	25 / 85 / 21
Packaging Quantity	126 pcs per carton		

085 Model No.	085M Model No.	Rated Current @ 40°C	Mechanical Diagram	Unit Weight (g)	Terminal Options	
					In	Out
085.00101.00	085M.00101.00	1.0	A	63.0	IEC Inlet Socket	Faston 6.35*0.8
085.00301.00	085M.00301.00	3.0	A	63.0	IEC Inlet Socket	Faston 6.35*0.8
085.00601.00	085M.00601.00	6.0	A	65.0	IEC Inlet Socket	Faston 6.35*0.8
085.01001.00	085M.01001.00	10.0	A	65.0	IEC Inlet Socket	Faston 6.35*0.8

085 / 085M Mechanical Outlines



085 / 085M Mechanical Dimensions (mm) For reference only

Model No.	Model No.	A	B	C	D	E	F	G	H	I	R	S	T	U	r
085.00101.00	085M.00101.00	50.9	28.5	33.0	36.0	67.0	44.0	2*4.0	8.8	12.0	3.0	29.5	33.5	36.1	2.1
085.00301.00	085M.00301.00	50.9	28.5	33.0	36.0	67.0	44.0	2*4.0	8.8	12.0	3.0	29.5	33.5	36.1	2.1
085.00601.00	085M.00601.00	50.9	28.5	33.0	36.0	67.0	44.0	2*4.0	8.8	12.0	3.0	29.5	33.5	36.1	2.1
085.01001.00	085M.01001.00	50.9	28.5	33.0	36.0	67.0	44.0	2*4.0	8.8	12.0	3.0	29.5	33.5	36.1	2.1

All dimensions in mm, 1 inch=25.4 mm

Insertion Loss in dB Measured in a 50Ω System

Model No.	Common Mode IL (Frequencies in MHz)								Model No.	Common Mode IL (Frequencies in MHz)							
	0.05	0.1	0.15	0.5	1.0	5.0	10.0	30.0		0.05	0.1	0.15	0.5	1.0	5.0	10.0	30.0
085.00101.00	32.0	38.0	41.0	53.0	56.0	55.0	55.0	50.0	085M.00101.00	32.0	38.0	41.0	49.0	51.0	33.0	27.0	17.0
085.00301.00	28.0	34.0	37.0	49.0	51.0	52.0	50.0	50.0	085M.00301.00	28.0	34.0	37.0	45.0	43.0	29.0	23.0	15.0
085.00601.00	16.0	22.0	25.0	35.0	38.0	48.0	48.0	45.0	085M.00601.00	16.0	22.0	25.0	31.0	33.0	29.0	23.0	15.0
085.01001.00	10.0	16.0	18.0	26.0	28.0	42.0	42.0	40.0	085M.01001.00	10.0	16.0	18.0	24.0	26.0	16.0	10.0	8.0

Model No.	Differential Mode IL (Frequencies in MHz)								Model No.	Differential Mode IL (Frequencies in MHz)							
	0.05	0.1	0.15	0.5	1.0	5.0	10.0	30.0		0.05	0.1	0.15	0.5	1.0	5.0	10.0	30.0
085 Series	12.0	14.0	18.0	28.0	32.0	55.0	50.0	50.0	085M Series	12.0	14.0	18.0	28.0	32.0	55.0	50.0	50.0

- Line to ground capacitors are available up to 4,700 pF.
- Other specifications, requirements and customizations can be offered upon request.

X-ON Electronics

Largest Supplier of Electrical and Electronic Components

Click to view similar products for [AC Power Entry Modules](#) category:

Click to view products by [Astrodyne](#) manufacturer:

Other Similar products are found below :

[0098.0050](#) [6167.0002](#) [6609100-2](#) [7-6609955-2](#) [FKI2-50-6/M5](#) [FN361-6-06](#) [FN389-4-22](#) [FN9226B-6-02](#) [FN9233S1-10-06](#) [FN9233S1-8-06](#)
[FN9233S1B-8-06](#) [FN9233S1R-1-06](#) [FN9233S1R-12-06](#) [FN9233SB-1-06](#) [FN9233SB-12-06](#) [FN9233SB-8-06](#) [FN9233SR-10-06](#) [FN9244B-15-06HI](#) [FN9244EB-3-06](#) [FN9244EB-8-06](#) [FN9244ER-15-06](#) [FN9244ER-8-06](#) [FN9244ES1-8-06](#) [FN9244ESB-8-06](#) [FN9244R-12-06](#)
[FN9244S1-12-06](#) [FN9244S1R-3-06](#) [FN9244SB-8-06](#) [FN9244SR-6-06](#) [FN9244U-3-06](#) [FN9244U-8-06](#) [8-6609940-2](#) [PE00SSSXB](#) [Fuse-H-EUR-1](#) [Fuse-H-USA-1](#) [PM00XD000](#) [A-0701-HT-H](#) [15EJMS8](#) [1-6609941-2](#) [200JM6-2](#) [CA121003-6](#) [SK-1015\(F1-5\)](#) [161-R3015-E](#) [1-6609153-2](#) [FN323-1-05](#) [FN9233B-8-06](#) [FN9233EB-1-06](#) [FN9233ES1R-10-06](#) [FN9233R-12-06](#) [FN9233S-10-06](#)