

# DSC1000

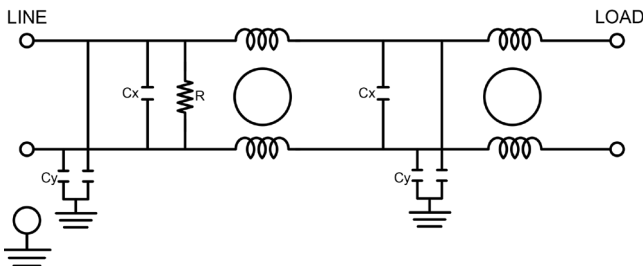
## HIGH PERFORMANCE SINGLE PHASE DUAL STAGE POWER LINE FILTER

### FEATURES

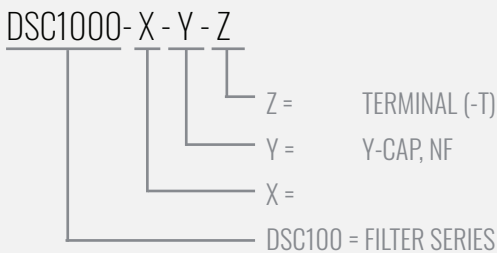
- » **Rated currents include 16A**
- » Dual Stage Line Filter
- » Available with **QD** tab and **W** (wire leads) option
- » High Performance Design
- » Agency Approved to UL1283 / 60929, CSA C22.2, EN60939
- » Y-cap value can be adjusted to fit specification



### ELECTRICAL SCHEMATIC



### HOW TO ORDER



**NOTE:** USE ANY COMBINATION OF -X (AMPS) WITH ANY -Y RATINGS  
E.G. **DSC1000-1-.47-QD** (.47 NF YCAP)

### SPECIFICATIONS

OPERATING FREQUENCY	50/60Hz
USABLE FREQUENCY	DC - 400 Hz
<b>MAX. OPERATING VOLTAGE</b>	250V +10%
AMBIENT TEMPERATURE	-25 TO 40°C
CLIMATIC CATEGORY	25/100/21
TERMINALS (-T)	QD: 0.25 TABS WIRE LEADS
<b>TYP. WEIGHT, LBS (KG)</b>	0.8 (0.36)

### LEAKAGE CURRENT

@ 250 VAC 50 Hz	0 - 3.50 mA Max.
@ 120 VAC 60 Hz	0 - 1.80 mA Max.

### HIPOT RATINGS

<b>LINE TO GROUND</b>	2700 VDC
-----------------------	----------

### TYPICAL APPLICATIONS

- ✓ Food Service Equipment
- ✓ Industrial and Mechanical Lighting
- ✓ Home Appliances
- ✓ Power Supplies
- ✓ Consumer Electronics

# DSC1000

## HIGH PERFORMANCE SINGLE PHASE DUAL STAGE POWER LINE FILTER

MODEL NO.	RATED CURRENT (A) @ 40° C	Y-CAP, nF	Z-CAP	LEAKAGE CURRENT, mA @ 250V AC, 50 Hz / @ 120V AC, 60 Hz		TERMINAL OPTIONS		MAX. DIMENSIONS" (MM)		
						(QD)INPUT/ OUTPUT	(W) INPUT/ OUTPUT	WIDTH	(LENGTH)	HEIGHT
DSC1000-1-0-QD	16	0	-	-	-	✓		2.24"(57)	4.56"(116)	1.81"(46)
DSC1000-1-0-W	16	0	-	-	-		✓	2.24"(57)	4.53"(115)	1.81"(46)
DSC1000-1-.47-QD	16	0.47	-	0.07	0.04	✓		2.24"(57)	4.56"(116)	1.81"(46)
DSC1000-1-.47-W	16	0.47	-	0.07	0.04		✓	2.24"(57)	4.53"(115)	1.81"(46)
DSC1000-1-1-QD	16	1	-	0.15	0.09	✓		2.24"(57)	4.56"(116)	1.81"(46)
DSC1000-1-1-W	16	1	-	0.15	0.09		✓	2.24"(57)	4.53"(115)	1.81"(46)
DSC1000-1-2.2-QD	16	2.2	-	0.34	0.19	✓		2.24"(57)	4.56"(116)	1.81"(46)
DSC1000-1-2.2-W	16	2.2	-	0.34	0.19		✓	2.24"(57)	4.53"(115)	1.81"(46)
DSC1000-1-4.7-QD	16	4.7	-	0.73	0.42	✓		2.24"(57)	4.56"(116)	1.81"(46)
DSC1000-1-4.7-W	16	4.7	-	0.73	0.42		✓	2.24"(57)	4.53"(115)	1.81"(46)
DSC1000-1-10-QD	16	10	-	1.57	0.90	✓		2.24"(57)	4.56"(116)	1.81"(46)
DSC1000-1-10-W	16	10	-	1.57	0.90		✓	2.24"(57)	4.53"(115)	1.81"(46)
DSC1000-3-0-0-QD	16	0	0	-	-	✓		2.24"(57)	4.56"(116)	1.81"(46)
DSC1000-3-0-0-W	16	0	0	-	-		✓	2.24"(57)	4.53"(115)	1.81"(46)
DSC1000-3-.47-.47-QD	16	0.47	0.47	0.07	0.04	✓		2.24"(57)	4.56"(116)	1.81"(46)
DSC1000-3-.47-.47-W	16	0.47	0.47	0.07	0.04		✓	2.24"(57)	4.53"(115)	1.81"(46)
DSC1000-3-1-1-QD	16	1	1	0.15	0.09	✓		2.24"(57)	4.56"(116)	1.81"(46)
DSC1000-3-1-1-W	16	1	1	0.15	0.09		✓	2.24"(57)	4.53"(115)	1.81"(46)
DSC1000-3-2.2-2.2-QD	16	2.2	2.2	0.34	0.19	✓		2.24"(57)	4.56"(116)	1.81"(46)
DSC1000-3-2.2-2.2-W	16	2.2	2.2	0.34	0.19		✓	2.24"(57)	4.53"(115)	1.81"(46)
DSC1000-3-4.7-4.7-QD	16	4.7	4.7	0.73	0.42	✓		2.24"(57)	4.56"(116)	1.81"(46)
DSC1000-3-4.7-4.7-W	16	4.7	4.7	0.73	0.42		✓	2.24"(57)	4.53"(115)	1.81"(46)
DSC1000-3-10-10-QD	16	10	10	1.57	0.90	✓		2.24"(57)	4.56"(116)	1.81"(46)
DSC1000-3-10-10-W	16	10	10	1.57	0.90		✓	2.24"(57)	4.53"(115)	1.81"(46)
DSC1000-4-0-0-QD	16	0	0	-	-	✓		2.24"(57)	4.56"(116)	1.81"(46)
DSC1000-4-0-0-W	16	0	0	-	-		✓	2.24"(57)	4.53"(115)	1.81"(46)
DSC1000-4-.22-.22-QD	16	0.22	0.22	*	*	✓		2.24"(57)	4.56"(116)	1.81"(46)
DSC1000-4-.22-.22-W	16	0.22	0.22	*	*		✓	2.24"(57)	4.53"(115)	1.81"(46)
DSC1000-4-.47-.47-QD	16	0.47	0.47	0.07	0.04	✓		2.24"(57)	4.56"(116)	1.81"(46)
DSC1000-4-.47-.47-W	16	0.47	0.47	0.07	0.04		✓	2.24"(57)	4.53"(115)	1.81"(46)
DSC1000-4-1-1-QD	16	1	1	0.15	0.09	✓		2.24"(57)	4.56"(116)	1.81"(46)
DSC1000-4-1-1-W	16	1	1	0.15	0.09		✓	2.24"(57)	4.53"(115)	1.81"(46)
DSC1000-4-2.2-2.2-QD	16	2.2	2.2	0.34	0.19	✓		2.24"(57)	4.56"(116)	1.81"(46)
DSC1000-4-2.2-2.2-W	16	2.2	2.2	0.34	0.19		✓	2.24"(57)	4.53"(115)	1.81"(46)

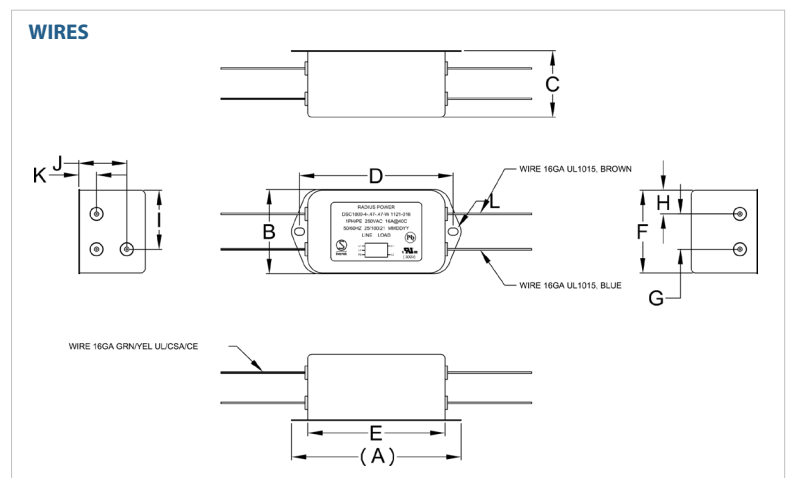
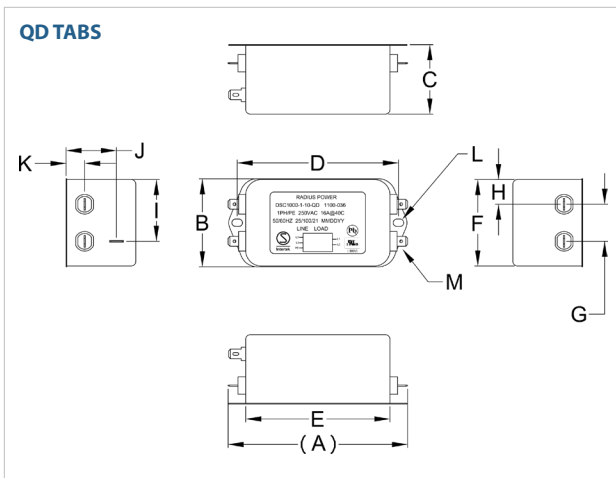
**ADDITIONAL MODEL NO. >>**

# DSC1000

## HIGH PERFORMANCE SINGLE PHASE DUAL STAGE POWER LINE FILTER

MODEL NO.	RATED CURRENT (A) @ 40° C	Y-CAP, nF	Z-CAP	LEAKAGE CURRENT, mA @ 250V AC, 50 Hz / @ 120V AC, 60 Hz		TERMINAL OPTIONS		MAX. DIMENSIONS" (MM)		
						(QD)INPUT/OUTPUT	(W) INPUT/OUTPUT	WIDTH	(LENGTH)	HEIGHT
DSC1000-4-4.7-4.7-QD	16	4.7	4.7	0.73	0.42	✓		2.24"(57)	4.56"(116)	1.81"(46)
DSC1000-4-4.7-4.7-W	16	4.7	4.7	0.73	0.42		✓	2.24"(57)	4.53"(115)	1.81"(46)
DSC1000-4-10-10-QD	16	10	10	1.57	0.90	✓		2.24"(57)	4.56"(116)	1.81"(46)
DSC1000-4-10-10-W	16	10	10	1.57	0.90		✓	2.24"(57)	4.53"(115)	1.81"(46)

### DSC1000 MECHANICAL OUTLINES" (MM)



SERIES	(A)	B	C	D	E	F	G	H	I	J	K	L	M
<b>QD TABS</b>	4.56" (116)	2.24" (57)	1.81" (46)	4.09" (104)	3.66" (93)	2.24" (57)	0.94" (24)	0.63" (16)	1.57" (40)	1.28" (33)	0.47" (12)	Ø 0.25"x0.20",2x Ø, 6.4x5.3, 2x	QD, MALE, 6.35, 5x
<b>WIRES</b>	4.53" (115)	2.24" (57)	1.81" (46)	4.09" (104)	3.70" (94)	2.24" (57)	0.94" (24)	0.63" (16)	1.57" (40)	1.28" (33)	0.47" (12)	Ø 0.25"x0.20",2x Ø, 6.4x5.3, 2x	N/A

TYPICAL TOLERANCE: +/- 0.02" (0.50MM)

# DSC1000

## HIGH PERFORMANCE SINGLE PHASE DUAL STAGE POWER LINE FILTER

### TYPICAL INSERTION LOSS, dB (50/50 Ohm)

Amps	Freq (MHz)	0.15	0.5	1.0	10	30
DSC1000-1	CM (dB)	42	65	70	55	50
	DM (dB)	36	60	65	70	70
DSC1000-3	CM (dB)	46	64	70	70	60
	DM (dB)	36	60	65	70	70
DSC1000-4	CM (dB)	50	70	70	70	66
	DM (dB)	36	60	65	70	70

## X-ON Electronics

Largest Supplier of Electrical and Electronic Components

*Click to view similar products for [Power Line Filters](#) category:*

*Click to view products by [Astrodyne](#) manufacturer:*

Other Similar products are found below :

[6609019-3](#) [6609026-5](#) [6609030-6](#) [6609973-2](#) [D30A](#) [7-1609090-5](#) [F2810](#) [F4456A](#) [F7382Z](#) [F7863Z](#) [FAHAV3100ZC000](#) [806276](#) [FN2020B-1-06](#) [FN2080B-10-06](#) [FN2410H-32-33](#) [FN2410H-80-34](#) [FP144](#) [FS4153-20-06](#) [FS4353-500-99](#) [12-MMB-030-11-D](#) [DB4-393](#) [15811T200](#) [20B1](#) [LC630](#) [2B1](#) [1609080-2](#) [1609993-8](#) [1-6609070-1](#) [F1100AA02](#) [F1150CC10](#) [F1500CA10](#) [F1500CA15](#) [F4041Z](#) [F7585E](#) [1B1](#) [FN2070A-16-06](#) [FN2090A-20-06](#) [FN2090B-12-06](#) [FN2090Z-1-06](#) [FN2410H-25-33](#) [FN2410H-60-34](#) [FN2410H-8-44](#) [FN2412H-8-44](#) [FN323B-6-01](#) [FN610R-3-06](#) [20EHQ7](#) [20EHZ7](#) [20K1](#) [30B6](#) [3K1](#)