

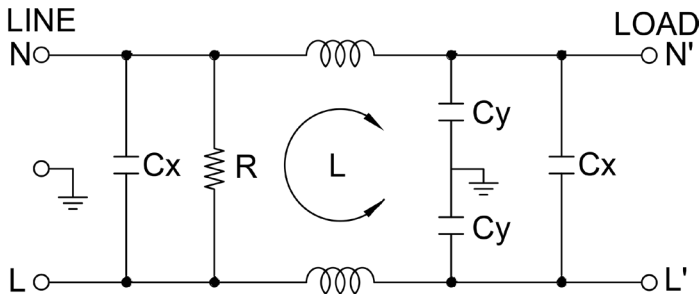
F9100

EXTENDED TEMPERATURE **RUGGED COTS** SINGLE STAGE SINGLE PHASE FILTERS

FEATURES

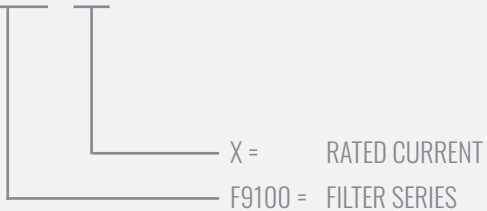
- » Rated currents include **5A, 10A, 20A, 30A and 35A**
- » Extended temperature range for 80°C
- » Single Stage Line Filter
- » Available with **S** (studs)
- » Designed for dynamic and high ambient environments
- » Agency Approved to UL1283 / 60929, CSA C22.2, EN 60098-1

ELECTRICAL SCHEMATIC



HOW TO ORDER

F9100.00511.00



NOTE: USE ANY COMBINATION OF -X (AMPS) WITH ANY -Y RATINGS
E.G. **F9100.00511.00** (5AMPS)

For **X** options see product specification table.



SPECIFICATIONS

OPERATING FREQUENCY	50/60Hz
MAX. OPERATING VOLTAGE	250V +10%
OPERATING TEMPERATURE	-40 TO 100°C
CLIMATIC CATEGORY	25/100/21
TERMINALS (-T)	STUDS (M4 5-20A) (M6 30-35A)
TYP. WEIGHT, LBS (KG)	0.8 (0.4)

LEAKAGE CURRENT

@ 250 VAC 50 Hz	0 - 0.89 mA Max.
@ 115 VAC 60 Hz	0 - 0.49 mA Max.

HIPOT RATINGS

LINE TO LINE	1450 VDC
LINE TO GROUND	2250 VDC

TYPICAL APPLICATIONS

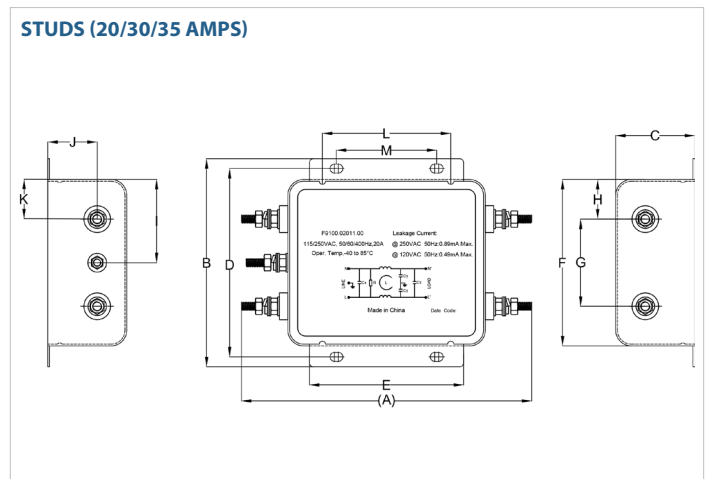
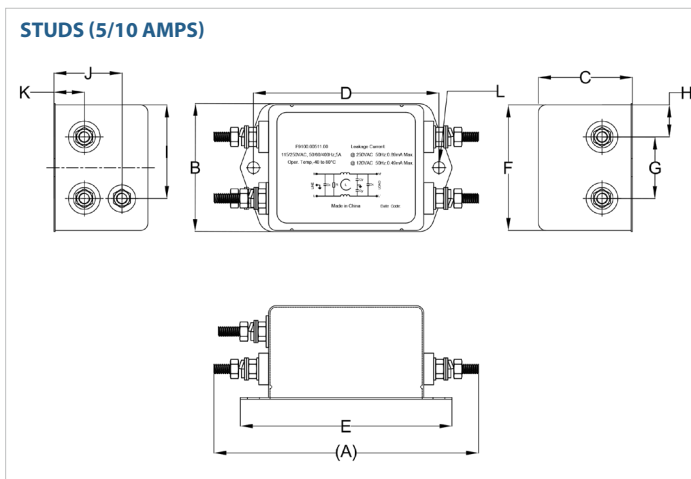
- ✓ Applications at high ambient environments or with limited temperature rise requirements such as RTCA/DO-160, MIL-STD-461 and other military/rugged industrial applications.

F9100

EXTENDED TEMPERATURE **RUGGED COTS** SINGLE STAGE SINGLE PHASE FILTERS

MODEL NO.	RATED CURRENT, A @ 80° C	LEAKAGE CURRENT, mA @ 250V AC, 50 Hz / @ 115V AC, 60 Hz		TERMINAL OPTIONS			MAX. DIMENSIONS" (MM)		
				(QD)INPUT/ OUTPUT	(W) INPUT/ OUTPUT	(S) INPUT/ OUTPUT	WIDTH	(LENGTH)	HEIGHT
F9100.00511.00	5	0.89	0.49			✓	2.05"(52)	4.21"(107)	1.50"(38)
F9100.01011.00	10	0.89	0.49			✓	2.05"(52)	4.21"(107)	1.50"(38)
F9100.02011.00	20	0.89	0.49			✓	4.13"(105)	5.79"(147)	1.57"(40)
F9100.03011.00	30	0.89	0.49			✓	4.13"(105)	5.79"(147)	1.57"(40)
F9100.03511.00	35	0.89	0.49			✓	4.13"(105)	5.79"(147)	1.57"(40)

RP210 MECHANICAL OUTLINES (MM)



SERIES	(A)	B	C	D	E	F	G	H	I	J	K	L	M
STUDS (5/10A)	4.21" (107)	2.05" (52)	1.50" (38)	2.95" (75)	3.37" (86)	2.01" (51)	0.98" (25)	0.51" (13)	1.50" (38)	1.09" (28)	0.48" (12)	2*Ø4.8	N/A
STUDS (20/30/35A)	5.79" (147)	4.13" (105)	1.57" (40)	3.74" (95)	3.07" (78)	3.31" (84)	1.73" (44)	0.79" (20)	1.65" (42)	0.98" (25)	0.79" (20)	2.56" (65)	2.00" (51)

TYPICAL TOLERANCE: +/-0.02" (0.50MM)

***CONTACT FACTORY FOR TYPICAL INSERTION LOSS, dB (50/50 Ohm)**

X-ON Electronics

Largest Supplier of Electrical and Electronic Components

Click to view similar products for [Power Line Filters](#) category:

Click to view products by [Astrodyne](#) manufacturer:

Other Similar products are found below :

[6609019-3](#) [6609026-5](#) [6609030-6](#) [6609973-2](#) [D30A](#) [7-1609090-5](#) [F2810](#) [F4456A](#) [F7382Z](#) [F7863Z](#) [FAHAV3100ZC000](#) [806276](#) [FN2020B-1-06](#) [FN2080B-10-06](#) [FN2410H-32-33](#) [FN2410H-80-34](#) [FP144](#) [FS4153-20-06](#) [FS4353-500-99](#) [12-MMB-030-11-D](#) [DB4-393](#) [15811T200](#) [20B1](#) [LC630](#) [2B1](#) [1609080-2](#) [1609993-8](#) [1-6609070-1](#) [F1100AA02](#) [F1150CC10](#) [F1500CA10](#) [F1500CA15](#) [F4041Z](#) [F7585E](#) [1B1](#) [FN2070A-16-06](#) [FN2090A-20-06](#) [FN2090B-12-06](#) [FN2090Z-1-06](#) [FN2410H-25-33](#) [FN2410H-60-34](#) [FN2410H-8-44](#) [FN2412H-8-44](#) [FN323B-6-01](#) [FN610R-3-06](#) [20EHQ7](#) [20EHZ7](#) [20K1](#) [30B6](#) [3K1](#)