

# F9200

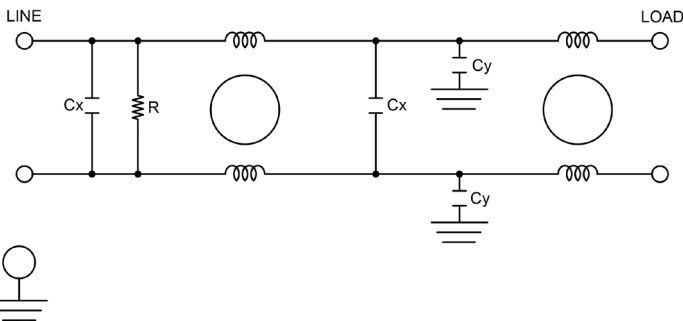
## EXTENDED TEMPERATURE **RUGGED COTS** DUAL STAGE SINGLE PHASE FILTERS

### FEATURES

- » Rated currents include **5A, 10A, 20A, 30A and 35A**
- » Extended temperature range 80°C
- » Dual Stage Line Filter
- » High Performance
- » Available with **S** (studs) option
- » Designed for dynamic and high ambient environment
- » Agency Approved to UL1283 / 60929, CSA C22.2, EN 60098-1



### ELECTRICAL SCHEMATIC



### SPECIFICATIONS

OPERATING FREQUENCY	50/60Hz
MAX. OPERATING VOLTAGE	250V +10%
OPERATING TEMPERATURE	-40 TO 100°C
CLIMATIC CATEGORY	25/100/21
TERMINALS (-T)	STUDS (M4 5-20A) (M6 30-35A)
TYP. WEIGHT, LBS (KG)	0.8 (0.4)

### LEAKAGE CURRENT

@ 250 VAC 50 Hz	0 - 0.89 mA Max.
@ 115 VAC 60 Hz	0 - 0.49 mA Max.

### HIPOT RATINGS

LINE TO LINE	1450 VDC
LINE TO GROUND	2250 VDC

### TYPICAL APPLICATIONS

- ✓ Applications at high ambient environments or with limited temperature rise requirements such as RTCA/DO-160, MIL-STD-461 and other military/rugged industrial applications.

### HOW TO ORDER

F9200.00511.00

X = RATED CURRENT  
F9200 = FILTER SERIES

**NOTE:** USE ANY COMBINATION OF -X (AMPS) WITH ANY -Y RATINGS

E.G. **F9200.00511.00** (5AMPS)

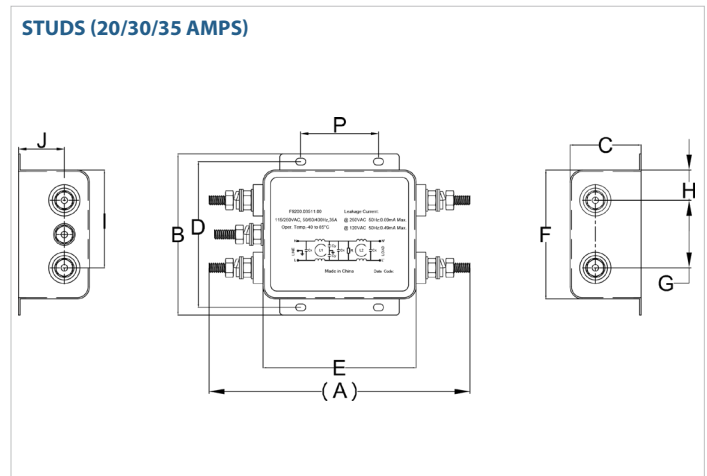
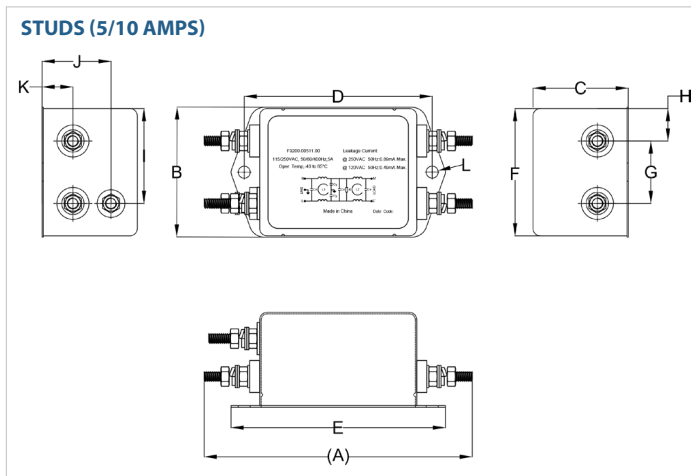
For **X** options see product specification table.

# F9200

## EXTENDED TEMPERATURE **RUGGED COTS** DUAL STAGE SINGLE PHASE FILTERS

MODEL NO.	RATED CURRENT, A @ 80° C	LEAKAGE CURRENT, mA @ 250V AC, 50 Hz / @ 115V AC, 60 Hz	TERMINAL OPTIONS			MAX. DIMENSIONS" (MM)			
			(QD)INPUT/ OUTPUT	(W) INPUT/ OUTPUT	(S) INPUT/ OUTPUT	WIDTH	(LENGTH)	HEIGHT	
F9200.00511.00	5	0.89	0.49			✓	2.05"(52)	4.21"(107)	1.50"(38)
F9200.01011.00	10	0.89	0.49			✓	2.28"(58)	5.38"(137)	1.61"(41)
F9200.02011.00	20	0.89	0.49			✓	2.28"(58)	5.38"(137)	1.61"(41)
F9200.03011.00	30	0.89	0.49			✓	4.13"(105)	6.71"(170)	1.82"(46)
F9200.03511.00	35	0.89	0.49			✓	4.13"(105)	6.71"(170)	1.82"(46)

### RP210 MECHANICAL OUTLINES (MM)



SERIES	(A)	B	C	D	E	F	G	H	I	J	K	L
<b>STUDS (5A)</b>	4.21" (107)	2.05" (52)	1.50" (38)	2.95" (75)	3.37" (86)	2.01" (51)	0.98" (25)	0.51" (13)	1.50" (38)	1.09" (28)	0.48" (12)	2*Ø4.8
<b>STUDS (10A)</b>	5.38" (137)	2.28" (58)	1.61" (41)	4.13" (105)	4.53" (115)	2.24" (57)	1.18" (30)	0.53" (13)	1.71" (43)	1.15" (29)	0.51" (13)	N/A
<b>STUDS (20/30/35A)</b>	6.71" (170)	4.13" (105)	1.82" (46)	3.74" (95)	3.94" (100)	3.31" (84)	1.73" (44)	0.78" (20)	2.51" (64)	0.79" (20)	N/A	N/A

TYPICAL TOLERANCE: +/-0.02" (0.50MM)

**\*CONTACT FACTORY FOR TYPICAL INSERTION LOSS, dB (50/50 Ohm)**

## X-ON Electronics

Largest Supplier of Electrical and Electronic Components

*Click to view similar products for [Power Line Filters](#) category:*

*Click to view products by [Astrodyne](#) manufacturer:*

Other Similar products are found below :

[6609019-3](#) [6609026-5](#) [6609030-6](#) [6609973-2](#) [D30A](#) [7-1609090-5](#) [F2810](#) [F4456A](#) [F7382Z](#) [F7863Z](#) [FAHAV3100ZC000](#) [806276](#) [FN2020B-1-06](#) [FN2080B-10-06](#) [FN2410H-32-33](#) [FN2410H-80-34](#) [FP144](#) [FS4153-20-06](#) [FS4353-500-99](#) [12-MMB-030-11-D](#) [DB4-393](#) [15811T200](#) [20B1](#) [LC630](#) [2B1](#) [1609080-2](#) [1609993-8](#) [1-6609070-1](#) [F1100AA02](#) [F1150CC10](#) [F1500CA10](#) [F1500CA15](#) [F4041Z](#) [F7585E](#) [1B1](#) [FN2070A-16-06](#) [FN2090A-20-06](#) [FN2090B-12-06](#) [FN2090Z-1-06](#) [FN2410H-25-33](#) [FN2410H-60-34](#) [FN2410H-8-44](#) [FN2412H-8-44](#) [FN323B-6-01](#) [FN3258H-130-35](#) [FN610R-3-06](#) [20EHQ7](#) [20EHZ7](#) [20K1](#) [30B6](#)