

RP130

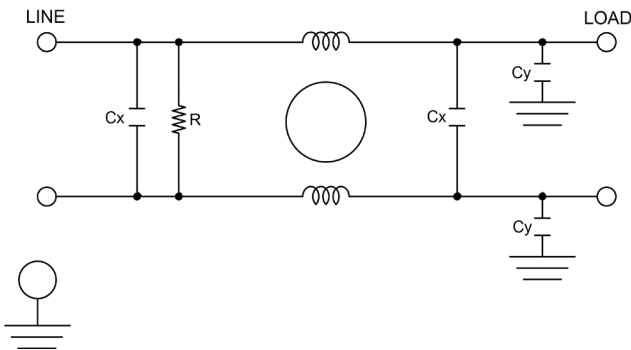
HIGH PERFORMANCE SINGLE STAGE POWER LINE FILTERS

FEATURES

- » Rated currents include **3 A, 6A, 10 A, 20A, 30A and 40A**
- » Single Stage Line Filter
- » Available with **QD** tabs, **W** (wireleads), and **S** (studs), **C** (connectors) option
- » High Performance
- » Agency Approved to UL1283/60929, CSA C22.2, EN 60939
- » Y-cap value can be adjusted to fit specifications



ELECTRICAL SCHEMATIC



SPECIFICATIONS

OPERATING FREQUENCY	50/60Hz
USABLE FREQUENCY	DC - 400 Hz
MAX. OPERATING VOLTAGE	250V +10%
AMBIENT TEMPERATURE	-25 TO 40°C
CLIMATIC CATEGORY	25/100/21
TERMINALS (-T)	QD: 0.25" TABS (3A-20A) WIRE LEADS S: (30A-40A) (M5) CONNECTORS

TYP. WEIGHT, LBS (KG) 0.7 (0.3) - 1.9 (0.9)

TYPICAL LEAKAGE CURRENT

@ 250 VAC 50 Hz	0 - 18.0 mA Max.
@ 120 VAC 60 Hz	0 - 9.0 mA Max.

HIPOT RATINGS

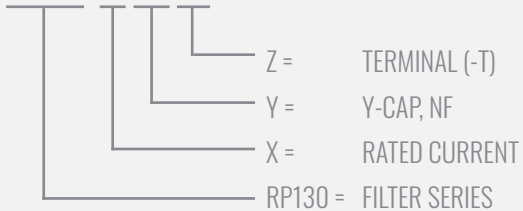
LINE TO GROUND	2700 VDC
----------------	----------

TYPICAL APPLICATIONS

- ✓ Household Appliances
- ✓ Industrial Equipment
- ✓ Power Supplies
- ✓ Consumer Electronics
- ✓ Office Automation Devices
- ✓ Data Processing Systems

HOW TO ORDER

RP130-X-Y-Z



NOTE: USE ANY COMBINATION OF -X (AMPS) WITH ANY -Y RATINGS
E.G. **RP130-6-100-W** (6AMPS WITH 100 NF YCAP)

For **X, Y** and **Z** options see product specification table.

RP130

HIGH PERFORMANCE SINGLE STAGE POWER LINE FILTERS

MODEL NO.	RATED CURRENT, A @ 40° C	Y-CAP, nF	LEAKAGE CURRENT, mA @ 250V AC, 50 Hz / @ 120V AC, 60 Hz		TERMINAL OPTIONS				MAX. DIMENSIONS" (MM)		
					(QD)IN/ OUTPUT	(W) IN/ OUTPUT	(S) IN/ OUTPUT	(C) IN/ OUTPUT	WIDTH	(LENGTH)	HEIGHT
RP130-3-0-QD	3	0	-	-	✓				2.01" (51)	3.50" (89)	1.61" (41)
RP130-3-0-W	3	0	-	-		✓			2.05" (52)	3.35" (85)	1.61" (41)
RP130-3-47-QD	3	0.47	0.07	0.04	✓				2.01" (51)	3.50" (89)	1.61" (41)
RP130-3-47-W	3	0.47	0.07	0.04		✓			2.05" (52)	3.35" (85)	1.61" (41)
RP130-3-1-QD	3	1	0.15	0.09	✓				2.01" (51)	3.50" (89)	1.61" (41)
RP130-3-1-W	3	1	0.15	0.09		✓			2.05" (52)	3.35" (85)	1.61" (41)
RP130-3-2.2-QD	3	2.2	0.34	0.19	✓				2.01" (51)	3.50" (89)	1.61" (41)
RP130-3-2.2-W	3	2.2	0.34	0.19		✓			2.05" (52)	3.35" (85)	1.61" (41)
RP130-3-3.3-QD	3	3.3	0.51	0.29	✓				2.01" (51)	3.50" (89)	1.61" (41)
RP130-3-3.3-W	3	3.3	0.51	0.29		✓			2.05" (52)	3.35" (85)	1.61" (41)
RP130-3-4.7-QD	3	4.7	0.73	0.42	✓				2.01" (51)	3.50" (89)	1.61" (41)
RP130-3-4.7-W	3	4.7	0.73	0.42		✓			2.05" (52)	3.35" (85)	1.61" (41)
RP130-3-10-QD	3	10	1.57	0.90	✓				2.01" (51)	3.50" (89)	1.61" (41)
RP130-3-10-W	3	10	1.57	0.90		✓			2.05" (52)	3.35" (85)	1.61" (41)
RP130-3-22-QD	3	22	3.45	1.99	✓				2.01" (51)	3.50" (89)	1.61" (41)
RP130-3-22-W	3	22	3.45	1.99		✓			2.05" (52)	3.35" (85)	1.61" (41)
RP130-3-100-QD	3	100	15.70	9.04	✓				2.01" (51)	3.50" (89)	1.61" (41)
RP130-3-100-W	3	100	15.70	9.04		✓			2.05" (52)	3.35" (85)	1.61" (41)
RP130-6-0-QD	6	0	-	-	✓				2.01" (51)	3.50" (89)	1.61" (41)
RP130-6-0-W	6	0	-	-		✓			2.05" (52)	3.35" (85)	1.61" (41)
RP130-6-47-QD	6	0.47	0.07	0.04	✓				2.01" (51)	3.50" (89)	1.61" (41)
RP130-6-47-W	6	0.47	0.07	0.04		✓			2.05" (52)	3.35" (85)	1.61" (41)
RP130-6-1-QD	6	1	0.15	0.09	✓				2.01" (51)	3.50" (89)	1.61" (41)
RP130-6-1-W	6	1	0.15	0.09		✓			2.05" (52)	3.35" (85)	1.61" (41)
RP130-6-2.2-QD	6	2.2	0.34	0.19	✓				2.01" (51)	3.50" (89)	1.61" (41)
RP130-6-2.2-W	6	2.2	0.34	0.19		✓			2.05" (52)	3.35" (85)	1.61" (41)
RP130-6-3.3-QD	6	3.3	0.51	0.29	✓				2.01" (51)	3.50" (89)	1.61" (41)
RP130-6-3.3-W	6	3.3	0.51	0.29		✓			2.05" (52)	3.35" (85)	1.61" (41)
RP130-6-4.7-QD	6	4.7	0.73	0.42	✓				2.01" (51)	3.50" (89)	1.61" (41)
RP130-6-4.7-W	6	4.7	0.73	0.42		✓			2.05" (52)	3.35" (85)	1.61" (41)
RP130-6-10-QD	6	10	1.57	0.90	✓				2.01" (51)	3.50" (89)	1.61" (41)
RP130-6-10-W	6	10	1.57	0.90		✓			2.05" (52)	3.35" (85)	1.61" (41)
RP130-6-22-QD	6	22	3.45	1.99	✓				2.01" (51)	3.50" (89)	1.61" (41)
RP130-6-22-W	6	22	3.45	1.99		✓			2.05" (52)	3.35" (85)	1.61" (41)

ADDITIONAL MODEL NO. >>

RP130

HIGH PERFORMANCE SINGLE STAGE POWER LINE FILTERS

MODEL NO.	RATED CURRENT, A @ 40° C	Y-CAP, nF	LEAKAGE CURRENT, mA @ 250V AC, 50 Hz / @ 120V AC, 60 Hz		TERMINAL OPTIONS				MAX. DIMENSIONS" (MM)		
					(QD)IN/ OUTPUT	(W) IN/ OUTPUT	(S) IN/ OUTPUT	(C) IN/ OUTPUT	WIDTH	(LENGTH)	HEIGHT
RP130-6-100-QD	6	100	15.70	9.04	✓				2.01" (51)	3.50" (89)	1.61" (41)
RP130-6-100-W	6	100	15.70	9.04		✓			2.05" (52)	3.35" (85)	1.61" (41)
RP130-10-0-QD	10	0	-	-	✓				2.28" (58)	4.65" (118)	1.81" (46)
RP130-10-0-W	10	0	-	-		✓			2.28" (58)	4.57" (116)	1.81" (46)
RP130-10-0.47-QD	10	0.47	0.07	0.04	✓				2.28" (58)	4.65" (118)	1.81" (46)
RP130-10-0.47-W	10	0.47	0.07	0.04		✓			2.28" (58)	4.57" (116)	1.81" (46)
RP130-10-1-QD	10	1	0.15	0.09	✓				2.28" (58)	4.65" (118)	1.81" (46)
RP130-10-1-W	10	1	0.15	0.09		✓			2.28" (58)	4.57" (116)	1.81" (46)
RP130-10-2.2-QD	10	2.2	0.34	0.19	✓				2.28" (58)	4.65" (118)	1.81" (46)
RP130-10-2.2-W	10	2.2	0.34	0.19		✓			2.28" (58)	4.57" (116)	1.81" (46)
RP130-10-3.3-QD	10	3.3	0.51	0.29	✓				2.28" (58)	4.65" (118)	1.81" (46)
RP130-10-3.3-W	10	3.3	0.51	0.29		✓			2.28" (58)	4.57" (116)	1.81" (46)
RP130-10-4.7-QD	10	4.7	0.73	0.42	✓				2.28" (58)	4.65" (118)	1.81" (46)
RP130-10-4.7-W	10	4.7	0.73	0.42		✓			2.28" (58)	4.57" (116)	1.81" (46)
RP130-10-10-QD	10	10	1.57	0.90	✓				2.28" (58)	4.65" (118)	1.81" (46)
RP130-10-10-W	10	10	1.57	0.90		✓			2.28" (58)	4.57" (116)	1.81" (46)
RP130-10-22-QD	10	22	3.45	1.99	✓				2.28" (58)	4.65" (118)	1.81" (46)
RP130-10-22-W	10	22	3.45	1.99		✓			2.28" (58)	4.57" (116)	1.81" (46)
RP130-10-100-QD	10	100	15.70	9.04	✓				2.28" (58)	4.65" (118)	1.81" (46)
RP130-10-100-W	10	100	15.70	9.04		✓			2.28" (58)	4.57" (116)	1.81" (46)
RP130-20-0-QD	20	0	-	-	✓				2.28" (58)	4.65" (118)	1.81" (46)
RP130-20-0-S	20	0	-	-			✓		2.28" (58)	5.00" (127)	1.81" (46)
RP130-20-0-W	20	0	-	-		✓			2.28" (58)	4.57" (116)	1.81" (46)
RP130-20-0.47-QD	20	0.47	0.07	0.04	✓				2.28" (58)	4.65" (118)	1.81" (46)
RP130-20-0.47-S	20	0.47	0.07	0.04			✓		2.28" (58)	5.00" (127)	1.81" (46)
RP130-20-0.47-W	20	0.47	0.07	0.04		✓			2.28" (58)	4.57" (116)	1.81" (46)
RP130-20-1-QD	20	1	0.15	0.09	✓				2.28" (58)	4.65" (118)	1.81" (46)
RP130-20-1-S	20	1	0.15	0.09			✓		2.28" (58)	5.00" (127)	1.81" (46)
RP130-20-1-W	20	1	0.15	0.09		✓			2.28" (58)	4.57" (116)	1.81" (46)
RP130-20-2.2-QD	20	2.2	0.34	0.19	✓				2.28" (58)	4.65" (118)	1.81" (46)
RP130-20-2.2-S	20	2.2	0.34	0.19			✓		2.28" (58)	5.00" (127)	1.81" (46)
RP130-20-2.2-W	20	2.2	0.34	0.19		✓			2.28" (58)	4.57" (116)	1.81" (46)
RP130-20-4.7-QD	20	4.7	0.73	0.42	✓				2.28" (58)	4.65" (118)	1.81" (46)
RP130-20-4.7-S	20	4.7	0.73	0.42			✓		2.28" (58)	5.00" (127)	1.81" (46)

ADDITIONAL MODEL NO. >>

RP130

HIGH PERFORMANCE SINGLE STAGE POWER LINE FILTERS

MODEL NO.	RATED CURRENT, A @ 40° C	Y-CAP, nF	LEAKAGE CURRENT, mA @ 250V AC, 50 Hz / @ 120V AC, 60 Hz		TERMINAL OPTIONS				MAX. DIMENSIONS" (MM)		
					(QD)IN/ OUTPUT	(W) IN/ OUTPUT	(S) IN/ OUTPUT	(C) IN/ OUTPUT	WIDTH	(LENGTH)	HEIGHT
RP130-20-4.7-W	20	4.7	0.73	0.42		✓			2.28" (58)	4.57" (116)	1.81" (46)
RP130-20-10-QD	20	10	1.57	0.90	✓				2.28" (58)	4.65" (118)	1.81" (46)
RP130-20-10-S	20	10	1.57	0.90			✓		2.28" (58)	5.00" (127)	1.81" (46)
RP130-20-10-W	20	10	1.57	0.90		✓			2.28" (58)	4.57" (116)	1.81" (46)
RP130-20-22-QD	20	22	3.45	1.99	✓				2.28" (58)	4.65" (118)	1.81" (46)
RP130-20-22-S	20	22	3.45	1.99			✓		2.28" (58)	5.00" (127)	1.81" (46)
RP130-20-22-W	20	22	3.45	1.99		✓			2.28" (58)	4.57" (116)	1.81" (46)
RP130-20-100-QD	20	100	15.70	9.04	✓				2.28" (58)	4.65" (118)	1.81" (46)
RP130-20-100-S	20	100	15.70	9.04			✓		2.28" (58)	5.00" (127)	1.81" (46)
RP130-20-100-W	20	100	15.70	9.04		✓			2.28" (58)	4.57" (116)	1.81" (46)
RP130-30-0-C	30	0	-	-				✓	*	*	*
RP130-30-0-S	30	0	-	-			✓		3.83" (97.3)	4.36" (110.8)	2.62" (66.6)
RP130-30-0-W	30	0	-	-		✓			*	*	*
RP130-30-47-C	30	0.47	0.07	0.04				✓	*	*	*
RP130-30-47-S	30	0.47	0.07	0.04			✓		3.83" (97.3)	4.36" (110.8)	2.62" (66.6)
RP130-30-47-W	30	0.47	0.07	0.04		✓			*	*	*
RP130-30-1-C	30	1	0.15	0.09				✓	*	*	*
RP130-30-1-S	30	1	0.15	0.09			✓		3.83" (97.3)	4.36" (110.8)	2.62" (66.6)
RP130-30-1-W	30	1	0.15	0.09		✓			*	*	*
RP130-30-2.2-C	30	2.2	0.34	0.19				✓	*	*	*
RP130-30-2.2-S	30	2.2	0.34	0.19			✓		3.83" (97.3)	4.36" (110.8)	2.62" (66.6)
RP130-30-2.2-W	30	2.2	0.34	0.19		✓			*	*	*
RP130-30-4.7-C	30	4.7	0.73	0.42				✓	*	*	*
RP130-30-4.7-S	30	4.7	0.73	0.42			✓		3.83" (97.3)	4.36" (110.8)	2.62" (66.6)
RP130-30-4.7-W	30	4.7	0.73	0.42		✓			*	*	*
RP130-30-10-C	30	10	1.57	0.90				✓	*	*	*
RP130-30-10-S	30	10	1.57	0.90			✓		3.83" (97.3)	4.36" (110.8)	2.62" (66.6)
RP130-30-10-W	30	10	1.57	0.90		✓			*	*	*
RP130-30-22-C	30	22	3.45	1.99				✓	*	*	*
RP130-30-22-S	30	22	3.45	1.99			✓		3.83" (97.3)	4.36" (110.8)	2.62" (66.6)
RP130-30-22-W	30	22	3.45	1.99		✓			*	*	*
RP130-30-100-C	30	100	15.70	9.04				✓	*	*	*
RP130-30-100-S	30	100	15.70	9.04			✓		3.83" (97.3)	4.36" (110.8)	2.62" (66.6)

ADDITIONAL MODEL NO. >>

RP130

HIGH PERFORMANCE SINGLE STAGE POWER LINE FILTERS

MODEL NO.	RATED CURRENT, A @ 40° C	Y-CAP, nF	LEAKAGE CURRENT, mA @ 250V AC, 50 Hz / @ 120V AC, 60 Hz		TERMINAL OPTIONS				MAX. DIMENSIONS" (MM)		
					(QD)IN/ OUTPUT	(W) IN/ OUTPUT	(S) IN/ OUTPUT	(C) IN/ OUTPUT	WIDTH	(LENGTH)	HEIGHT
RP130-30-100-W	30	100	15.70	9.04		✓			*	*	*
RP130-40-0-C	40	0	-	-				✓	*	*	*
RP130-40-0-S	40	0	-	-			✓		3.84"(97.6)	5.67"(144)	2.13"(54)
RP130-40-0-W	40	0	-	-		✓			*	*	*
RP130-40-47-C	40	0.47	0.07	0.04				✓	*	*	*
RP130-40-47-S	40	0.47	0.07	0.04			✓		3.84"(97.6)	5.67"(144)	2.13"(54)
RP130-40-47-W	40	0.47	0.07	0.04		✓			*	*	*
RP130-40-1-C	40	1	0.15	0.09				✓	*	*	*
RP130-40-1-S	40	1	0.15	0.09			✓		3.84"(97.6)	5.67"(144)	2.13"(54)
RP130-40-1-W	40	1	0.15	0.09		✓			*	*	*
RP130-40-2.2-C	40	2.2	0.34	0.19				✓	*	*	*
RP130-40-2.2-S	40	2.2	0.34	0.19			✓		3.84"(97.6)	5.67"(144)	2.13"(54)
RP130-40-2.2-W	40	2.2	0.34	0.19		✓			*	*	*
RP130-40-4.7-C	40	4.7	0.73	0.42				✓	*	*	*
RP130-40-4.7-S	40	4.7	0.73	0.42			✓		3.84"(97.6)	5.67"(144)	2.13"(54)
RP130-40-4.7-W	40	4.7	0.73	0.42		✓			*	*	*
RP130-40-10-C	40	10	1.57	0.90				✓	*	*	*
RP130-40-10-S	40	10	1.57	0.90			✓		3.84"(97.6)	5.67"(144)	2.13"(54)
RP130-40-10-W	40	10	1.57	0.90		✓			*	*	*
RP130-40-22-C	40	22	3.45	1.99				✓	*	*	*
RP130-40-22-S	40	22	3.45	1.99			✓		3.84"(97.6)	5.67"(144)	2.13"(54)
RP130-40-22-W	40	22	3.45	1.99		✓			*	*	*
RP130-40-100-C	40	100	15.70	9.04				✓	*	*	*
RP130-40-100-S	40	100	15.70	9.04			✓		3.84"(97.6)	5.67"(144)	2.13"(54)
RP130-40-100-W	40	100	15.70	9.04		✓			*	*	*

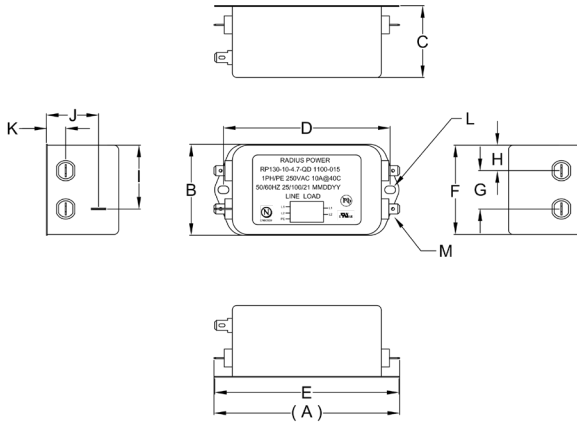
*Contact factory for dimensions.

RP130

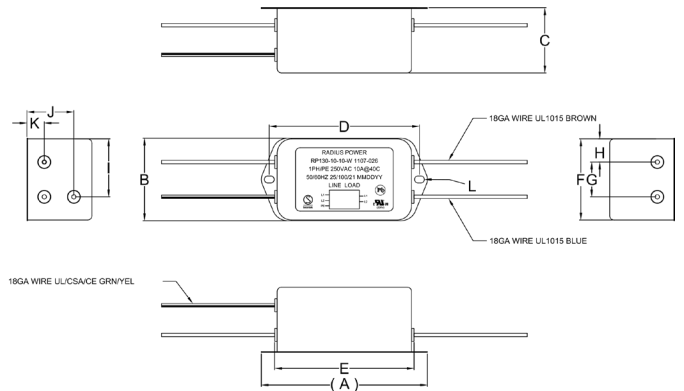
HIGH PERFORMANCE SINGLE STAGE POWER LINE FILTERS

RP130 MECHANICAL OUTLINES (MM)

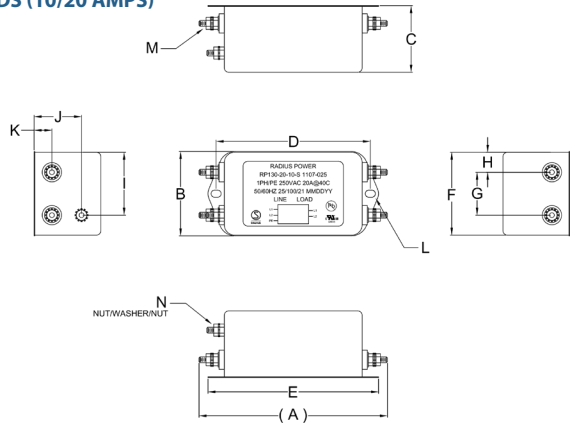
QD TABS (3/6/10/20 AMPS)



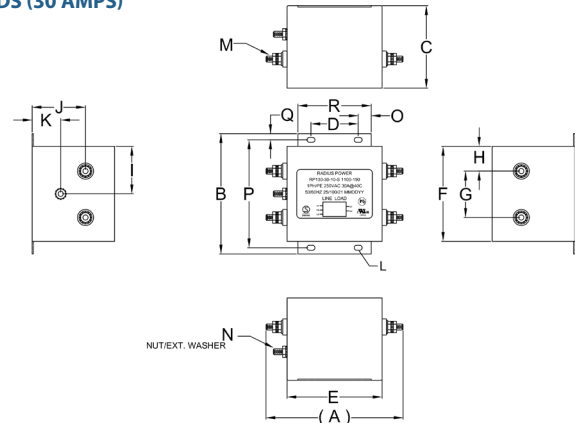
WIRES (3/6/10/20 AMPS)



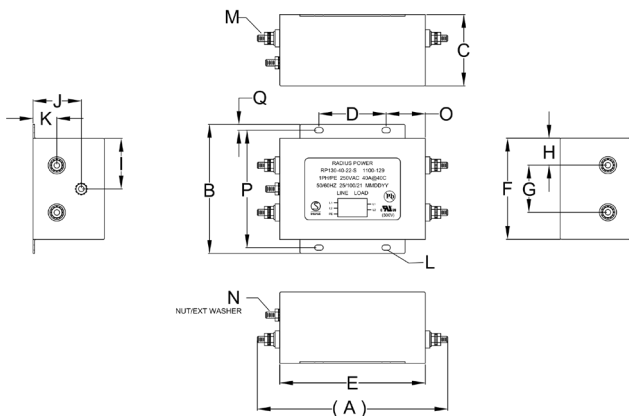
STUDS (10/20 AMPS)



STUDS (30 AMPS)



STUDS (40 AMPS)



RP130

HIGH PERFORMANCE SINGLE STAGE POWER LINE FILTERS

SERIES	(A)	B	C	D	E	F	G	H	I	J	K	L	M	N	O	P	Q	R
QD TABS (3/6A)	3.50" (89)	2.01" (51)	1.61" (41)	2.95" (75)	3.35" (85)	2.01" (51)	1.06" (27)	0.45" (11.5)	1.52" (38.5)	1.14" (29)	0.49" (12.5)	Ø0.25"x5.1,2x (Ø6.4x5.1, 2x)	0.25", 5x QD, MALE, 6.35,5x	N/A	N/A	N/A	N/A	N/A
WIRES (3/6A)	3.35" (85)	2.05" (52)	1.61" (41)	2.95" (75)	5.41" (137.3)	2.01" (51)	1.14" (29)	0.45" (11.5)	1.59" (40.5)	1.14" (29)	0.49" (12.5)	Ø0.25"x5.1,2x (Ø6.4x5.1, 2x)	N/A	N/A	N/A	N/A	N/A	N/A
QD TABS (10/20A)	4.65" (118)	2.28" (58)	1.81" (46)	4.09" (104)	4.53" (115)	2.24" (57)	0.94" (24)	0.63" (16)	1.57" (40)	1.28" (32.5)	0.47" (12)	Ø0.25"x5.3,2x (Ø6.4x5.3, 2x)	0.25", 5x QD, MALE, 6.35,5x	N/A	N/A	N/A	N/A	N/A
WIRES (10/20A)	4.57" (116)	2.28" (58)	1.81" (46)	4.09" (104)	3.80" (96.5)	2.24" (57)	0.94" (24)	0.63" (16)	1.57" (40)	1.28" (32.5)	0.47" (12)	Ø0.25"x5.3,2x (Ø6.4x5.3, 2x)	N/A	N/A	N/A	N/A	N/A	N/A
STUDS (10/20A)	5.00" (127)	2.24" (57)	1.81" (46)	4.09" (104)	4.53" (115)	2.24" (57)	1.14" (29)	0.53" (13.5)	1.67" (42.5)	1.26" (32)	0.47" (12)	Ø0.26"x4.8,2x (Ø6.8x4.8, 2x)	STUD, M4, 4x	STUD, GND, M4	N/A	N/A	N/A	N/A
STUDS (30A)	4.36" (110.8)	3.83" (97.3)	2.62" (66.6)	1.50" (38.15)	3.02" (76.8)	3.02" (76.8)	1.48" (37.5)	0.79" (20)	1.51" (38.4)	1.70" (43.1)	0.91" (23.1)	Ø0.25"x4.0,4x (Ø6.5x4.0, 4x)	STUD, M5, 4x	STUD, GND, M5	0.41" (10.53)	3.43" (87.2)	0.20" (5.03)	2.33" (59.2)
STUDS (40A)	5.67" (144)	3.84" (97.6)	2.13" (54)	2.00" (50.8)	4.33" (110)	3.01" (76.5)	1.48" (37.5)	0.80" (20.4)	1.51" (38.3)	1.44" (36.5)	0.71" (18)	Ø0.25"x4.0,4x (Ø6.5x4.0, 4x)	STUD, M5, 4x	STUD, GND, M5	1.17" (29.6)	3.50" (88.8)	0.17" (4.4)	N/A

TYPICAL TOLERANCE: +/-0.02" (0.50MM)

TYPICAL INSERTION LOSS, dB (50/50 Ohm)

Amps	Freq (MHz)	Insertion Loss (dB)				
		0.15	0.5	1.0	10	30
3	CM (dB)	48	50	50	52	45
	DM (dB)	62	80	80	65	75
6	CM (dB)	44	50	52	50	46
	DM (dB)	52	70	70	65	65
10	CM (dB)	38	48	44	45	46
	DM (dB)	54	70	70	57	60
20	CM (dB)	32	40	40	40	52
	DM (dB)	52	70	70	70	60
30	CM (dB)	16	28	32	52	40
	DM (dB)	13	60	60	45	45
40	CM (dB)	23	42	44	50	32
	DM (dB)	30	65	65	58	50

X-ON Electronics

Largest Supplier of Electrical and Electronic Components

Click to view similar products for [Power Line Filters](#) category:

Click to view products by [Astrodyne](#) manufacturer:

Other Similar products are found below :

[6609019-3](#) [6609026-5](#) [6609030-6](#) [6609973-2](#) [D30A](#) [7-1609090-5](#) [F2810](#) [F4456A](#) [F7382Z](#) [F7863Z](#) [FAHAV3100ZC000](#) [806276](#) [FN2020B-1-06](#) [FN2080B-10-06](#) [FN2410H-32-33](#) [FN2410H-80-34](#) [FP144](#) [FS4153-20-06](#) [FS4353-500-99](#) [12-MMB-030-11-D](#) [DB4-393](#) [15811T200](#)
[20B1](#) [LC630](#) [2B1](#) [1609080-2](#) [1609993-8](#) [1-6609070-1](#) [F1100AA02](#) [F1150CC10](#) [F1500CA10](#) [F1500CA15](#) [F4041Z](#) [F7585E](#) [1B1](#)
[FN2070A-16-06](#) [FN2090A-20-06](#) [FN2090B-12-06](#) [FN2090Z-1-06](#) [FN2410H-25-33](#) [FN2410H-60-34](#) [FN2410H-8-44](#) [FN2412H-8-44](#)
[FN323B-6-01](#) [FN610R-3-06](#) [20EHQ7](#) [20EHZ7](#) [20K1](#) [30B6](#) [3K1](#)