

RP186

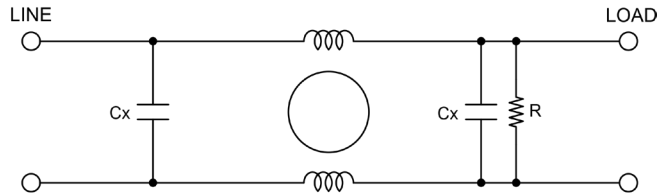
ULTRA HIGH PERFORMANCE SINGLE STAGE IEC INLET FILTER

FEATURES

- » Rated currents include **1A, 3A, 6A, 10A, 12A, 15A, 16A, and 20A**
- » Single Stage Line Filter
- » Available with **QD** tabs or **W** (wireleads) option
- » Ultra High Performance
- » Agency Approved to UL1283 / 60929, CSA C22.2, EN 60939
- » Y-cap value can be adjusted to fit specifications

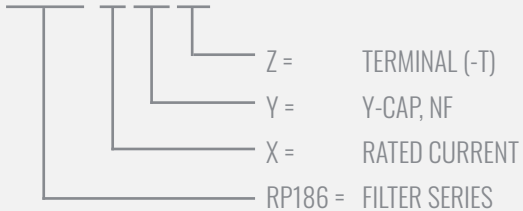


ELECTRICAL SCHEMATIC



HOW TO ORDER

RP186-X-Y-Z



NOTE: USE ANY COMBINATION OF -X (AMPS) WITH ANY -Y RATINGS
E.G. **RP186-6-.47-QD** (6AMPS WITH .47 NF YCAP)

For **X**, **Y** and **Z** options see product specification table.

SPECIFICATIONS

OPERATING FREQUENCY	50/60Hz
USABLE FREQUENCY	DC - 400 Hz
MAX. OPERATING VOLTAGE	250V +10%
AMBIENT TEMPERATURE	-25 TO 60°C UL/ 40°C IEC
CLIMATIC CATEGORY	25/100/21
TERMINALS (-T)	QD: 0.25" TABS WIRE LEADS
TYP. WEIGHT, LBS (KG)	0.2 (0.15)

TYPICAL LEAKAGE CURRENT

@ 250 VAC 50 Hz	0 - 4.0 mA Max.
@ 120 VAC 60 Hz	0 - 8.0 mA Max.

HIPOT RATINGS

LINE TO GROUND	2121 VDC
----------------	----------

TYPICAL APPLICATIONS

- ✓ Electronic Equipment
- ✓ Household Appliances
- ✓ Single-Phase Power Supplies
- ✓ Diagnostic Medical Equipment
- ✓ Lighting Fixtures
- ✓ Test & Measurement
- ✓ Industrial Automation

RP186

ULTRA HIGH PERFORMANCE SINGLE STAGE IEC INLET FILTER

MODEL NO.	RATED CURRENT, A @ 40° C	Y-CAP, nF	LEAKAGE CURRENT, mA @ 250V AC, 50 Hz / @ 120V AC, 60 Hz		TERMINAL OPTIONS		MAX. DIMENSIONS" (MM)		
					(QD) OUTPUT	(W) OUTPUT	WIDTH	(LENGTH)	HEIGHT
RP186-1-0-QD	1	0	-	-	✓		2.25" (57.2)	1.98" (50.2)	1.18" (30)
RP186-1-0-W	1	0	-	-		✓	2.25" (57.2)	1.98" (50.2)	1.18" (30)
RP186-1-47-QD	1	0.47	0.08	0.04	✓		2.25" (57.2)	1.98" (50.2)	1.18" (30)
RP186-1-47-W	1	0.47	0.08	0.04		✓	2.25" (57.2)	1.98" (50.2)	1.18" (30)
RP186-1-1-QD	1	1	0.20	0.10	✓		2.25" (57.2)	1.98" (50.2)	1.18" (30)
RP186-1-1-W	1	1	0.20	0.10		✓	2.25" (57.2)	1.98" (50.2)	1.18" (30)
RP186-1-2.2-QD	1	2.2	0.40	0.20	✓		2.25" (57.2)	1.98" (50.2)	1.18" (30)
RP186-1-2.2-W	1	2.2	0.40	0.20		✓	2.25" (57.2)	1.98" (50.2)	1.18" (30)
RP186-1-4.7-QD	1	4.7	0.80	0.40	✓		2.25" (57.2)	1.98" (50.2)	1.18" (30)
RP186-1-4.7-W	1	4.7	0.80	0.40		✓	2.25" (57.2)	1.98" (50.2)	1.18" (30)
RP186-1-10-QD	1	10	1.80	0.90	✓		2.25" (57.2)	1.98" (50.2)	1.18" (30)
RP186-1-10-W	1	10	1.80	0.90		✓	2.25" (57.2)	1.98" (50.2)	1.18" (30)
RP186-1-22-QD	1	22	4.00	2.00	✓		2.25" (57.2)	1.98" (50.2)	1.18" (30)
RP186-1-22-W	1	22	4.00	2.00		✓	2.25" (57.2)	1.98" (50.2)	1.18" (30)
RP186-1-47-QD	1	47	8.00	4.00	✓		2.25" (57.2)	1.98" (50.2)	1.18" (30)
RP186-1-47-W	1	47	8.00	4.00		✓	2.25" (57.2)	1.98" (50.2)	1.18" (30)
RP186-3-0-QD	3	0	-	-	✓		2.25" (57.2)	1.98" (50.2)	1.18" (30)
RP186-3-0-W	3	0	-	-		✓	2.25" (57.2)	1.98" (50.2)	1.18" (30)
RP186-3-47-QD	3	0.47	0.08	0.04	✓		2.25" (57.2)	1.98" (50.2)	1.18" (30)
RP186-3-47-W	3	0.47	0.08	0.04		✓	2.25" (57.2)	1.98" (50.2)	1.18" (30)
RP186-3-1-QD	3	1	0.20	0.10	✓		2.25" (57.2)	1.98" (50.2)	1.18" (30)
RP186-3-1-W	3	1	0.20	0.10		✓	2.25" (57.2)	1.98" (50.2)	1.18" (30)
RP186-3-2.2-QD	3	2.2	0.40	0.20	✓		2.25" (57.2)	1.98" (50.2)	1.18" (30)
RP186-3-2.2-W	3	2.2	0.40	0.20		✓	2.25" (57.2)	1.98" (50.2)	1.18" (30)
RP186-3-4.7-QD	3	4.7	0.80	0.40	✓		2.25" (57.2)	1.98" (50.2)	1.18" (30)
RP186-3-4.7-W	3	4.7	0.80	0.40		✓	2.25" (57.2)	1.98" (50.2)	1.18" (30)
RP186-3-10-QD	3	10	1.80	0.90	✓		2.25" (57.2)	1.98" (50.2)	1.18" (30)
RP186-3-10-W	3	10	1.80	0.90		✓	2.25" (57.2)	1.98" (50.2)	1.18" (30)
RP186-3-22-QD	3	22	4.00	2.00	✓		2.25" (57.2)	1.98" (50.2)	1.18" (30)
RP186-3-22-W	3	22	4.00	2.00		✓	2.25" (57.2)	1.98" (50.2)	1.18" (30)
RP186-3-47-QD	3	47	8.00	4.00	✓		2.25" (57.2)	1.98" (50.2)	1.18" (30)
RP186-3-47-W	3	47	8.00	4.00		✓	2.25" (57.2)	1.98" (50.2)	1.18" (30)
RP186-6-0-QD	6	0	-	-	✓		2.25" (57.2)	1.98" (50.2)	1.18" (30)
RP186-6-0-W	6	0	-	-		✓	2.25" (57.2)	1.98" (50.2)	1.18" (30)

ADDITIONAL MODEL NO. >>

RP186

ULTRA HIGH PERFORMANCE SINGLE STAGE IEC INLET FILTER

MODEL NO.	RATED CURRENT, A @ 40° C	Y-CAP, nF	LEAKAGE CURRENT, mA @ 250V AC, 50 Hz / @ 120V AC, 60 Hz		TERMINAL OPTIONS		MAX. DIMENSIONS" (MM)		
					(QD) OUTPUT	(W) OUTPUT	WIDTH	(LENGTH)	HEIGHT
RP186-6-47-QD	6	0.47	0.08	0.04	✓		2.25" (57.2)	1.98" (50.2)	1.18" (30)
RP186-6-47-W	6	0.47	0.08	0.04		✓	2.25" (57.2)	1.98" (50.2)	1.18" (30)
RP186-6-1-QD	6	1	0.20	0.10	✓		2.25" (57.2)	1.98" (50.2)	1.18" (30)
RP186-6-1-W	6	1	0.20	0.10		✓	2.25" (57.2)	1.98" (50.2)	1.18" (30)
RP186-6-2.2-QD	6	2.2	0.40	0.20	✓		2.25" (57.2)	1.98" (50.2)	1.18" (30)
RP186-6-2.2-W	6	2.2	0.40	0.20		✓	2.25" (57.2)	1.98" (50.2)	1.18" (30)
RP186-6-4.7-QD	6	4.7	0.80	0.40	✓		2.25" (57.2)	1.98" (50.2)	1.18" (30)
RP186-6-4.7-W	6	4.7	0.80	0.40		✓	2.25" (57.2)	1.98" (50.2)	1.18" (30)
RP186-6-10-QD	6	10	1.80	0.90	✓		2.25" (57.2)	1.98" (50.2)	1.18" (30)
RP186-6-10-W	6	10	1.80	0.90		✓	2.25" (57.2)	1.98" (50.2)	1.18" (30)
RP186-6-22-QD	6	22	4.00	2.00	✓		2.25" (57.2)	1.98" (50.2)	1.18" (30)
RP186-6-22-W	6	22	4.00	2.00		✓	2.25" (57.2)	1.98" (50.2)	1.18" (30)
RP186-6-47-QD	6	47	8.00	4.00	✓		2.25" (57.2)	1.98" (50.2)	1.18" (30)
RP186-6-47-W	6	47	8.00	4.00		✓	2.25" (57.2)	1.98" (50.2)	1.18" (30)
RP186-10-0-QD	10	0	-	-	✓		2.25" (57.2)	1.98" (50.2)	1.18" (30)
RP186-10-0-W	10	0	-	-		✓	2.25" (57.2)	1.98" (50.2)	1.18" (30)
RP186-10-47-QD	10	0.47	0.08	0.04	✓		2.25" (57.2)	1.98" (50.2)	1.18" (30)
RP186-10-47-W	10	0.47	0.08	0.04		✓	2.25" (57.2)	1.98" (50.2)	1.18" (30)
RP186-10-1-QD	10	1	0.20	0.10	✓		2.25" (57.2)	1.98" (50.2)	1.18" (30)
RP186-10-1-W	10	1	0.20	0.10		✓	2.25" (57.2)	1.98" (50.2)	1.18" (30)
RP186-10-2.2-QD	10	2.2	0.40	0.20	✓		2.25" (57.2)	1.98" (50.2)	1.18" (30)
RP186-10-2.2-W	10	2.2	0.40	0.20		✓	2.25" (57.2)	1.98" (50.2)	1.18" (30)
RP186-10-4.7-QD	10	4.7	0.80	0.40	✓		2.25" (57.2)	1.98" (50.2)	1.18" (30)
RP186-10-4.7-W	10	4.7	0.80	0.40		✓	2.25" (57.2)	1.98" (50.2)	1.18" (30)
RP186-10-10-QD	10	10	1.80	0.90	✓		2.25" (57.2)	1.98" (50.2)	1.18" (30)
RP186-10-10-W	10	10	1.80	0.90		✓	2.25" (57.2)	1.98" (50.2)	1.18" (30)
RP186-10-22-QD	10	22	4.00	2.00	✓		2.25" (57.2)	1.98" (50.2)	1.18" (30)
RP186-10-22-W	10	22	4.00	2.00		✓	2.25" (57.2)	1.98" (50.2)	1.18" (30)
RP186-10-47-QD	10	47	8.00	4.00	✓		2.25" (57.2)	1.98" (50.2)	1.18" (30)
RP186-10-47-W	10	47	8.00	4.00		✓	2.25" (57.2)	1.98" (50.2)	1.18" (30)
RP186-12-0-QD	12	0	-	-	✓		2.25" (57.2)	1.98" (50.2)	1.18" (30)
RP186-12-0-W	12	0	-	-		✓	2.25" (57.2)	1.98" (50.2)	1.18" (30)
RP186-12-47-QD	12	0.47	0.08	0.04	✓		2.25" (57.2)	1.98" (50.2)	1.18" (30)
RP186-12-47-W	12	0.47	0.08	0.04		✓	2.25" (57.2)	1.98" (50.2)	1.18" (30)

ADDITIONAL MODEL NO. >>

RP186

ULTRA HIGH PERFORMANCE SINGLE STAGE IEC INLET FILTER

MODEL NO.	RATED CURRENT, A @ 40° C	Y-CAP, nF	LEAKAGE CURRENT, mA @ 250V AC, 50 Hz / @ 120V AC, 60 Hz		TERMINAL OPTIONS		MAX. DIMENSIONS" (MM)		
					(QD) OUTPUT	(W) OUTPUT	WIDTH	(LENGTH)	HEIGHT
RP186-12-1-QD	12	1	0.20	0.10	✓		2.25" (57.2)	1.98" (50.2)	1.18" (30)
RP186-12-1-W	12	1	0.20	0.10		✓	2.25" (57.2)	1.98" (50.2)	1.18" (30)
RP186-12-2.2-QD	12	2.2	0.40	0.20	✓		2.25" (57.2)	1.98" (50.2)	1.18" (30)
RP186-12-2.2-W	12	2.2	0.40	0.20		✓	2.25" (57.2)	1.98" (50.2)	1.18" (30)
RP186-12-4.7-QD	12	4.7	0.80	0.40	✓		2.25" (57.2)	1.98" (50.2)	1.18" (30)
RP186-12-4.7-W	12	4.7	0.80	0.40		✓	2.25" (57.2)	1.98" (50.2)	1.18" (30)
RP186-12-10-QD	12	10	1.80	0.90	✓		2.25" (57.2)	1.98" (50.2)	1.18" (30)
RP186-12-10-W	12	10	1.80	0.90		✓	2.25" (57.2)	1.98" (50.2)	1.18" (30)
RP186-12-22-QD	12	22	4.00	2.00	✓		2.25" (57.2)	1.98" (50.2)	1.18" (30)
RP186-12-22-W	12	22	4.00	2.00		✓	2.25" (57.2)	1.98" (50.2)	1.18" (30)
RP186-12-47-QD	12	47	8.00	4.00	✓		2.25" (57.2)	1.98" (50.2)	1.18" (30)
RP186-12-47-W	12	47	8.00	4.00		✓	2.25" (57.2)	1.98" (50.2)	1.18" (30)
RP186-15-0-QD	15	0	-	-	✓		2.25" (57.2)	1.98" (50.2)	1.18" (30)
RP186-15-0-W	15	0	-	-		✓	2.25" (57.2)	1.98" (50.2)	1.18" (30)
RP186-15-47-QD	15	0.47	0.08	0.04	✓		2.25" (57.2)	1.98" (50.2)	1.18" (30)
RP186-15-47-W	15	0.47	0.08	0.04		✓	2.25" (57.2)	1.98" (50.2)	1.18" (30)
RP186-15-1-QD	15	1	0.20	0.10	✓		2.25" (57.2)	1.98" (50.2)	1.18" (30)
RP186-15-1-W	15	1	0.20	0.10		✓	2.25" (57.2)	1.98" (50.2)	1.18" (30)
RP186-15-2.2-QD	15	2.2	0.40	0.20	✓		2.25" (57.2)	1.98" (50.2)	1.18" (30)
RP186-15-2.2-W	15	2.2	0.40	0.20		✓	2.25" (57.2)	1.98" (50.2)	1.18" (30)
RP186-15-4.7-QD	15	4.7	0.80	0.40	✓		2.25" (57.2)	1.98" (50.2)	1.18" (30)
RP186-15-4.7-W	15	4.7	0.80	0.40		✓	2.25" (57.2)	1.98" (50.2)	1.18" (30)
RP186-15-10-QD	15	10	1.80	0.90	✓		2.25" (57.2)	1.98" (50.2)	1.18" (30)
RP186-15-10-W	15	10	1.80	0.90		✓	2.25" (57.2)	1.98" (50.2)	1.18" (30)
RP186-15-22-QD	15	22	4.00	2.00	✓		2.25" (57.2)	1.98" (50.2)	1.18" (30)
RP186-15-22-W	15	22	4.00	2.00		✓	2.25" (57.2)	1.98" (50.2)	1.18" (30)
RP186-15-47-QD	15	47	8.00	4.00	✓		2.25" (57.2)	1.98" (50.2)	1.18" (30)
RP186-15-47-W	15	47	8.00	4.00		✓	2.25" (57.2)	1.98" (50.2)	1.18" (30)
RP186-16-0-QD	16	0	-	-	✓		2.25" (57.2)	1.98" (50.2)	1.18" (30)
RP186-16-0-W	16	0	-	-		✓	2.25" (57.2)	1.98" (50.2)	1.18" (30)
RP186-16-47-QD	16	0.47	0.08	0.04	✓		2.25" (57.2)	1.98" (50.2)	1.18" (30)
RP186-16-47-W	16	0.47	0.08	0.04		✓	2.25" (57.2)	1.98" (50.2)	1.18" (30)
RP186-16-1-QD	16	1	0.20	0.10	✓		2.25" (57.2)	1.98" (50.2)	1.18" (30)
RP186-16-1-W	16	1	0.20	0.10		✓	2.25" (57.2)	1.98" (50.2)	1.18" (30)

ADDITIONAL MODEL NO. >>

RP186

ULTRA HIGH PERFORMANCE SINGLE STAGE IEC INLET FILTER

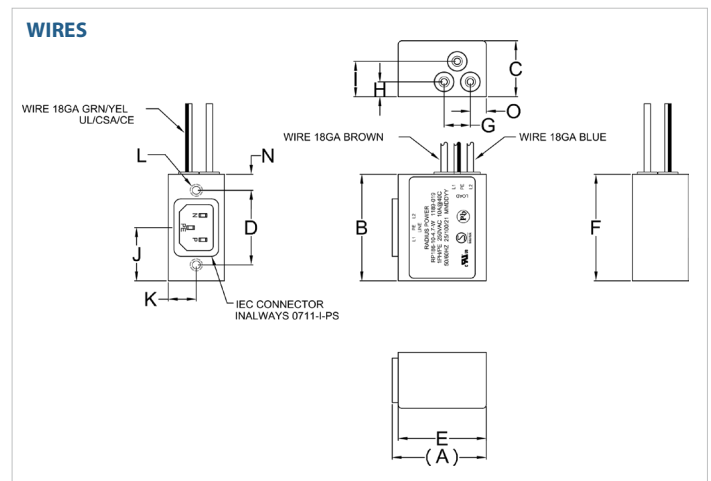
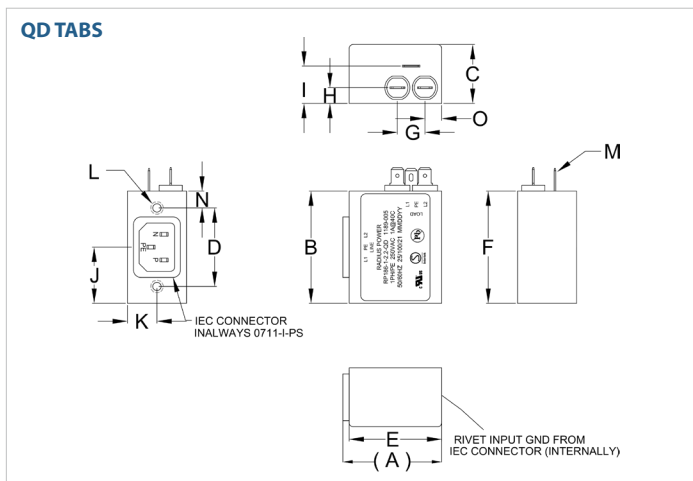
MODEL NO.	RATED CURRENT, A @ 40° C	Y-CAP, nF	LEAKAGE CURRENT, mA @ 250V AC, 50 Hz / @ 120V AC, 60 Hz		TERMINAL OPTIONS		MAX. DIMENSIONS" (MM)		
					(QD) OUTPUT	(W) OUTPUT	WIDTH	(LENGTH)	HEIGHT
RP186-16-2.2-QD	16	2.2	0.40	0.20	✓		2.25" (57.2)	1.98" (50.2)	1.18" (30)
RP186-16-2.2-W	16	2.2	0.40	0.20		✓	2.25" (57.2)	1.98" (50.2)	1.18" (30)
RP186-16-4.7-QD	16	4.7	0.80	0.40	✓		2.25" (57.2)	1.98" (50.2)	1.18" (30)
RP186-16-4.7-W	16	4.7	0.80	0.40		✓	2.25" (57.2)	1.98" (50.2)	1.18" (30)
RP186-16-10-QD	16	10	1.80	0.90	✓		2.25" (57.2)	1.98" (50.2)	1.18" (30)
RP186-16-10-W	16	10	1.80	0.90		✓	2.25" (57.2)	1.98" (50.2)	1.18" (30)
RP186-16-22-QD	16	22	4.00	2.00	✓		2.25" (57.2)	1.98" (50.2)	1.18" (30)
RP186-16-22-W	16	22	4.00	2.00		✓	2.25" (57.2)	1.98" (50.2)	1.18" (30)
RP186-16-47-QD	16	47	8.00	4.00	✓		2.25" (57.2)	1.98" (50.2)	1.18" (30)
RP186-16-47-W	16	47	8.00	4.00		✓	2.25" (57.2)	1.98" (50.2)	1.18" (30)
RP186-20-0-QD	20	0	-	-	✓		2.25" (57.2)	1.98" (50.2)	1.18" (30)
RP186-20-0-W	20	0	-	-		✓	2.25" (57.2)	1.98" (50.2)	1.18" (30)
RP186-20-47-QD	20	0.47	0.08	0.04	✓		2.25" (57.2)	1.98" (50.2)	1.18" (30)
RP186-20-47-W	20	0.47	0.08	0.04		✓	2.25" (57.2)	1.98" (50.2)	1.18" (30)
RP186-20-1-QD	20	1	0.20	0.10	✓		2.25" (57.2)	1.98" (50.2)	1.18" (30)
RP186-20-1-W	20	1	0.20	0.10		✓	2.25" (57.2)	1.98" (50.2)	1.18" (30)
RP186-20-2.2-QD	20	2.2	0.40	0.20	✓		2.25" (57.2)	1.98" (50.2)	1.18" (30)
RP186-20-2.2-W	20	2.2	0.40	0.20		✓	2.25" (57.2)	1.98" (50.2)	1.18" (30)
RP186-20-4.7-QD	20	4.7	0.80	0.40	✓		2.25" (57.2)	1.98" (50.2)	1.18" (30)
RP186-20-4.7-W	20	4.7	0.80	0.40		✓	2.25" (57.2)	1.98" (50.2)	1.18" (30)
RP186-20-10-QD	20	10	1.80	0.90	✓		2.25" (57.2)	1.98" (50.2)	1.18" (30)
RP186-20-10-W	20	10	1.80	0.90		✓	2.25" (57.2)	1.98" (50.2)	1.18" (30)
RP186-20-22-QD	20	22	4.00	2.00	✓		2.25" (57.2)	1.98" (50.2)	1.18" (30)
RP186-20-22-W	20	22	4.00	2.00		✓	2.25" (57.2)	1.98" (50.2)	1.18" (30)
RP186-20-47-QD	20	47	8.00	4.00	✓		2.25" (57.2)	1.98" (50.2)	1.18" (30)
RP186-20-47-W	20	47	8.00	4.00		✓	2.25" (57.2)	1.98" (50.2)	1.18" (30)

*Contact factory for dimensions.

RP186

ULTRA HIGH PERFORMANCE SINGLE STAGE IEC INLET FILTER

RP186 MECHANICAL OUTLINES (MM)



SERIES	(A)	B	C	D	E	F	G	H	I	J	K	L	M	N	O
QD TABS	1.98" (50.2)	2.25" (57.2)	1.18" (30)	1.57" (40)	1.85" (47)	2.25" (57.2)	0.55" (14)	0.31" (8)	0.75" (19)	1.13" (28.6)	0.59" (15)	INSERT BS-M3, 2x	0.25", 3x QD MALE 6.35, 3x	0.34" (8.58)	0.33" (8.5)
WIRES	1.98" (50.2)	2.25" (57.2)	1.18" (30)	1.57" (40)	1.85" (47)	2.25" (57.2)	0.55" (14)	0.31" (8)	0.75" (19)	1.13" (28.6)	0.59" (15)	INSERT BS-M3, 2x	N/A	0.34" (8.58)	0.33" (8.5)

TYPICAL TOLERANCE: +/-0.02" (0.50MM)

TYPICAL INSERTION LOSS, dB (50/50 Ohm)

Amps	Freq (MHz)	Insertion Loss (dB)					
		0.15	0.5	1.0	10	30	
1	CM (dB)	46	35	30	30	45	
	DM (dB)	60	80	80	50	35	
3	CM (dB)	50	40	35	30	55	
	DM (dB)	45	70	80	50	40	
6	CM (dB)	40	45	40	40	60	
	DM (dB)	35	70	80	45	45	
10	CM (dB)	30	40	35	35	40	
	DM (dB)	25	60	70	45	35	
12	CM (dB)	25	40	40	46	40	
	DM (dB)	20	55	75	70	46	
15	CM (dB)	20	30	35	45	40	
	DM (dB)	20	50	70	65	60	

RP186

ULTRA HIGH PERFORMANCE SINGLE STAGE IEC INLET FILTER

Amps	Freq (MHz)	0.15	0.5	1.0	10	30
16	CM (dB)	30	45	45	65	40
	DM (dB)	20	65	85	55	50
20	CM (dB)	25	40	40	65	40
	DM (dB)	20	65	85	60	55

X-ON Electronics

Largest Supplier of Electrical and Electronic Components

Click to view similar products for [Power Line Filters](#) category:

Click to view products by [Astrodyne](#) manufacturer:

Other Similar products are found below :

[6609019-3](#) [6609026-5](#) [6609030-6](#) [6609973-2](#) [D30A](#) [7-1609090-5](#) [F2810](#) [F4456A](#) [F7382Z](#) [F7863Z](#) [FAHAV3100ZC000](#) [806276](#) [FN2020B-1-06](#) [FN2080B-10-06](#) [FN2410H-32-33](#) [FN2410H-80-34](#) [FP144](#) [FS4153-20-06](#) [FS4353-500-99](#) [12-MMB-030-11-D](#) [DB4-393](#) [15811T200](#) [20B1](#) [LC630](#) [2B1](#) [1609080-2](#) [1609993-8](#) [1-6609070-1](#) [F1100AA02](#) [F1150CC10](#) [F1500CA10](#) [F1500CA15](#) [F4041Z](#) [F7585E](#) [1B1](#) [FN2070A-16-06](#) [FN2090A-20-06](#) [FN2090B-12-06](#) [FN2090Z-1-06](#) [FN2410H-25-33](#) [FN2410H-60-34](#) [FN2410H-8-44](#) [FN2412H-8-44](#) [FN323B-6-01](#) [FN610R-3-06](#) [20EHQ7](#) [20EHZ7](#) [20K1](#) [30B6](#) [3K1](#)