

# RP188

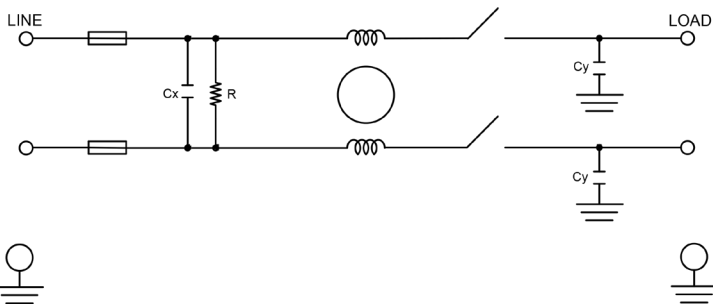
## POWER ENTRY MODULE SINGLE STAGE IEC INLET FILTER WITH FUSE AND SWITCH

### FEATURES

- » **Rated currents** include **3A, 6A and 10 A**
- » Single Stage Line Filter
- » Available with **QD** tabs
- » High Performance
- » Agency Approved to UL1283 / 60929, CSA C22.2, EN 60939
- » Y-cap value can be adjusted to fit specifications



### ELECTRICAL SCHEMATIC



### SPECIFICATIONS

OPERATING FREQUENCY	50/60Hz
IEC INLET	C14
MAX. OPERATING VOLTAGE*	250V +10%
AMBIENT TEMPERATURE	-25 TO 40°C
CLIMATIC CATEGORY	25/100/21
TERMINALS (-T)	QD: 0.25" TABS

TYP. WEIGHT, LBS (KG)	0.2 (0.1)
-----------------------	-----------

#### TYPICAL LEAKAGE CURRENT

@ 250 VAC 50 Hz	0 - 0.8 mA Max.
@ 120 VAC 60 Hz	0 - 0.4 mA Max.

#### HIPOT RATINGS

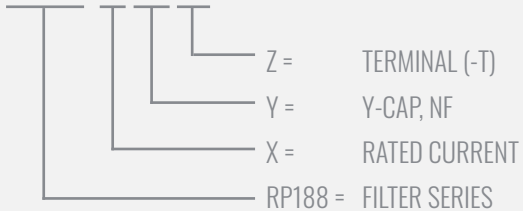
LINE TO GROUND	2121 VDC
----------------	----------

### TYPICAL APPLICATIONS

- ✓ Medical Devices
- ✓ Industrial Equipment
- ✓ Single-Phase Power Supplies
- ✓ Household Appliances
- ✓ Industrial Equipment
- ✓ Electronic Equipment

### HOW TO ORDER

RP188- X - Y - Z



**NOTE:** USE ANY COMBINATION OF -X (AMPS) WITH ANY -Y RATINGS  
E.G. **RP188-3-0-QD** (3AMPS WITH 0 NF YCAP)

For **X, Y** and **Z** options see product specification table.

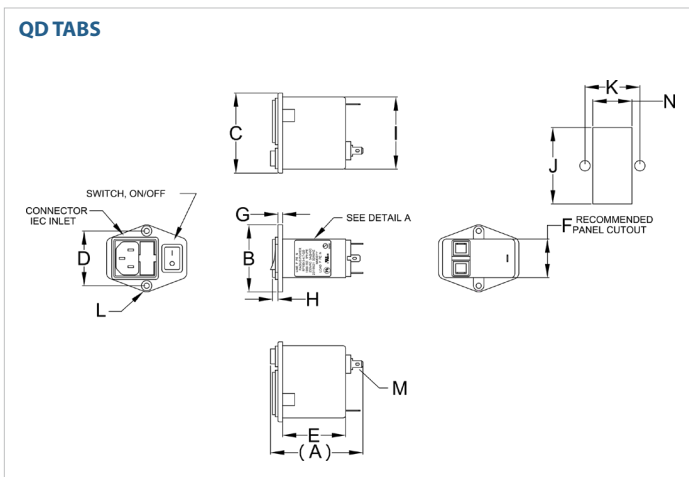
# RP188

## POWER ENTRY MODULE SINGLE STAGE IEC INLET FILTER WITH FUSE AND SWITCH

MODEL NO.	RATED CURRENT, A @ 40° C	Y-CAP, nF	LEAKAGE CURRENT, mA @ 250V AC, 50 Hz / @ 120V AC, 60 Hz		TERMINAL OPTIONS	MAX. DIMENSIONS" (MM)		
					(QD) OUTPUT	WIDTH	(LENGTH)	HEIGHT
RP188-3-0-QD	3	0	-	-	✓	1.93" (49.1)	2.65" (67.4)	2.30" (58.5)
RP188-3-47-QD	3	0.47	0.07	0.04	✓	1.93" (49.1)	2.65" (67.4)	2.30" (58.5)
RP188-3-1-QD	3	1	0.15	0.09	✓	1.93" (49.1)	2.65" (67.4)	2.30" (58.5)
RP188-3-2.2-QD	3	2.2	0.34	0.19	✓	1.93" (49.1)	2.65" (67.4)	2.30" (58.5)
RP188-3-4.7-QD	3	4.7	0.73	0.42	✓	1.93" (49.1)	2.65" (67.4)	2.30" (58.5)
RP188-6-0-QD	6	0	-	-	✓	1.93" (49.1)	2.65" (67.4)	2.30" (58.5)
RP188-6-47-QD	6	0.47	0.07	0.04	✓	1.93" (49.1)	2.65" (67.4)	2.30" (58.5)
RP188-6-1-QD	6	1	0.15	0.09	✓	1.93" (49.1)	2.65" (67.4)	2.30" (58.5)
RP188-6-2.2-QD	6	2.2	0.34	0.19	✓	1.93" (49.1)	2.65" (67.4)	2.30" (58.5)
RP188-6-4.7-QD	6	4.7	0.73	0.42	✓	1.93" (49.1)	2.65" (67.4)	2.30" (58.5)
RP188-10-0-QD	10	0	-	-	✓	1.93" (49.1)	2.65" (67.4)	2.30" (58.5)
RP188-10-47-QD	10	0.47	0.07	0.04	✓	1.93" (49.1)	2.65" (67.4)	2.30" (58.5)
RP188-10-1-QD	10	1	0.15	0.09	✓	1.93" (49.1)	2.65" (67.4)	2.30" (58.5)
RP188-10-2.2-QD	10	2.2	0.34	0.19	✓	1.93" (49.1)	2.65" (67.4)	2.30" (58.5)
RP188-10-4.7-QD	10	4.7	0.73	0.42	✓	1.93" (49.1)	2.65" (67.4)	2.30" (58.5)

\*Contact factory for dimensions.

### RP188 MECHANICAL OUTLINES (MM)



SERIES	(A)	B	C	D	E	F	G	H	I	H	K	L	M	N
<b>QD TABS</b>	2.65" (67.4)	1.93" (49.1)	2.30" (58.5)	1.57" (40)	1.81" (46)	1.15" (29.2)	0.13" (3.3)	0.16" (4)	2.12" (53.8)	2.22" (56.3)	1.57" (40)	M3 HOLE, 2x COUNTERSUNK	0.18", 3x (QD, MALE, 4.7, 3x)	1.13" (28.7)

TYPICAL TOLERANCE: +/-0.02" (0.50MM)

# RP188

## POWER ENTRY MODULE SINGLE STAGE IEC INLET FILTER WITH FUSE AND SWITCH

### TYPICAL INSERTION LOSS, dB (50/50 Ohm)

Amps	Freq (MHz)	0.15	0.5	1.0	10	30
<b>3</b>	CM (dB)	28	38	50	50	50
	DM (dB)	18	28	38	60	60
<b>6</b>	CM (dB)	24	38	50	50	50
	DM (dB)	18	28	36	55	55
<b>10</b>	CM (dB)	10	22	30	55	45
	DM (dB)	18	28	36	50	50

## X-ON Electronics

Largest Supplier of Electrical and Electronic Components

*Click to view similar products for [AC Power Entry Modules](#) category:*

*Click to view products by [Astrodyne](#) manufacturer:*

Other Similar products are found below :

[0098.0050](#) [6167.0002](#) [6609100-2](#) [7-6609955-2](#) [FKI2-50-6/M5](#) [FN361-6-06](#) [FN389-4-22](#) [FN9226B-6-02](#) [FN9233S1-10-06](#) [FN9233S1-8-06](#)  
[FN9233S1B-8-06](#) [FN9233S1R-1-06](#) [FN9233S1R-12-06](#) [FN9233SB-1-06](#) [FN9233SB-12-06](#) [FN9233SB-8-06](#) [FN9233SR-10-06](#) [FN9244B-15-06HI](#) [FN9244EB-3-06](#) [FN9244EB-8-06](#) [FN9244ER-15-06](#) [FN9244ER-8-06](#) [FN9244ES1-8-06](#) [FN9244ESB-8-06](#) [FN9244R-12-06](#)  
[FN9244S1-12-06](#) [FN9244S1R-3-06](#) [FN9244SB-8-06](#) [FN9244SR-6-06](#) [FN9244U-3-06](#) [FN9244U-8-06](#) [8-6609940-2](#) [PE00SSSXB](#) [Fuse-H-EUR-1](#) [Fuse-H-USA-1](#) [PM00XD000](#) [A-0701-HT-H](#) [15EJMS8](#) [1-6609941-2](#) [200JM6-2](#) [CA121003-6](#) [SK-1015\(F1-5\)](#) [161-R3015-E](#) [1-6609153-2](#) [FN323-1-05](#) [FN9233B-8-06](#) [FN9233EB-1-06](#) [FN9233ES1R-10-06](#) [FN9233R-12-06](#) [FN9233S-10-06](#)