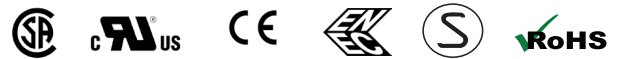
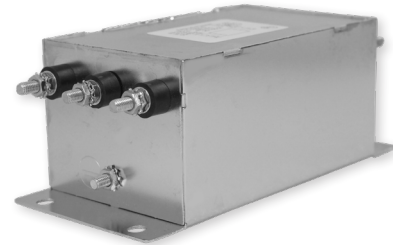


RP330

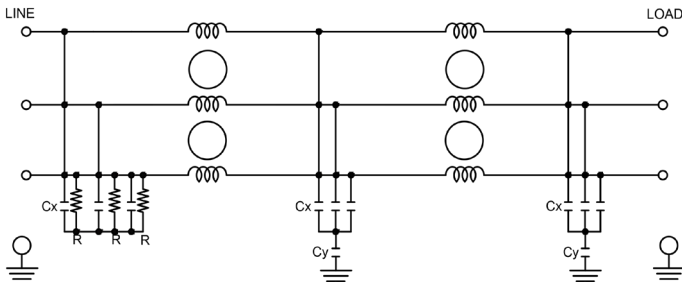
3-PHASE DELTA DUAL STAGE POWER LINE FILTER

FEATURES

- » Rated currents include **10A, 16A, 25A, 50A, 80A, 100A, 150A, 200A, and 250A**
- » Dual Stage Line Filter
- » Available with **W** (wires), **S** (studs) and **C** (connectors) option
- » Agency Approved to UL1283 / 60929, CSA C22.2, EN 60948
- » Y-cap value can be adjusted to fit specification

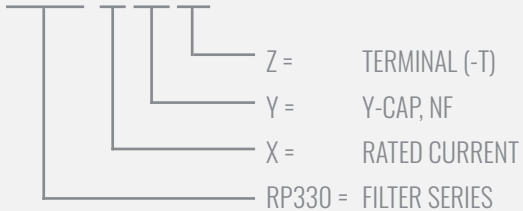


ELECTRICAL SCHEMATIC



HOW TO ORDER

RP330-X-Y-Z



NOTE: USE ANY COMBINATION OF -X (AMPS) WITH ANY -Y RATINGS
E.G. **RP330-50-10-S** (330AMPS WITH 50 NF YCAP)
For **X, Y** and **Z** options see product specification table.

SPECIFICATIONS

OPERATING FREQUENCY	50/60Hz
USABLE FREQUENCY	DC - 400 Hz
MAX. OPERATING VOLTAGE	480 V +10%
AMBIENT TEMPERATURE	-25 TO 50°C
CLIMATIC CATEGORY	25/100/21
TERMINALS (-T)	WIRELEADS
	STUDS 10-50A(M5)
	80-100A(M6), 150-250A(M10)
	CONNECTORS
TYP. WEIGHT, LBS (KG)	2.5-17.0 (1.1-7.7)

TYPICAL LEAKAGE CURRENT

@ 480 VAC 60 Hz 0 - 20.0 mA Max.

HIPOT RATINGS

LINE TO GROUND 3500 VDC

TYPICAL APPLICATIONS

- ✓ Power Conversion Systems
- ✓ Processing Equipment
- ✓ Alternative Energy (EV Charging & Solar Systems)
- ✓ Industrial Automation
- ✓ Test & Measurement

RP330

3-PHASE DELTA DUAL STAGE POWER LINE FILTER

MODEL NO.	RATED CURRENT, A @ 40° C	Y-CAP, nF	LEAKAGE CURRENT mA, @ 480V AC/60 Hz	TERMINAL OPTIONS			MAX. DIMENSIONS" (MM)		
				(W) INPUT/ OUTPUT	(S) INPUT/ OUTPUT	(C) INPUT/ OUTPUT	WIDTH	(LENGTH)	HEIGHT
RP330-10-0-S	10	0	-		✓		3.00"(76)	7.05"(179)	2.50"(64)
RP330-10-0-W	10	0	-	✓			*	*	*
RP330-10-10-S	10	10	0.10		✓		3.00"(76)	7.05"(179)	2.50"(64)
RP330-10-10-W	10	10	0.10	✓			*	*	*
RP330-10-100-S	10	100	1.00		✓		3.00"(76)	7.05"(179)	2.50"(64)
RP330-10-100-W	10	100	1.00	✓			*	*	*
RP330-10-1000-S	10	1000	10.00		✓		3.00"(76)	7.05"(179)	2.50"(64)
RP330-10-1000-W	10	1000	10.00	✓			*	*	*
RP330-10-2000-S	10	2000	20.00		✓		3.00"(76)	7.05"(179)	2.50"(64)
RP330-10-2000-W	10	2000	20.00	✓			*	*	*
RP330-16-0-S	16	0	-		✓		3.00"(76)	7.05"(179)	2.50"(64)
RP330-16-0-W	16	0	-	✓			*	*	*
RP330-16-10-S	16	10	0.10		✓		3.00"(76)	7.05"(179)	2.50"(64)
RP330-16-10-W	16	10	0.10	✓			*	*	*
RP330-16-100-S	16	100	1.00		✓		3.00"(76)	7.05"(179)	2.50"(64)
RP330-16-100-W	16	100	1.00	✓			*	*	*
RP330-16-1000-S	16	1000	10.00		✓		3.00"(76)	7.05"(179)	2.50"(64)
RP330-16-1000-W	16	1000	10.00	✓			*	*	*
RP330-16-2000-S	16	2000	20.00		✓		3.00"(76)	7.05"(179)	2.50"(64)
RP330-16-2000-W	16	2000	20.00	✓			*	*	*
RP330-25-0-C	25	0	-			✓	*	*	*
RP330-25-0-S	25	0	-		✓		4.00"(102)	8.05"(205)	2.50"(64)
RP330-25-0-W	25	0	-	✓			*	*	*
RP330-25-10-C	25	10	0.10			✓	*	*	*
RP330-25-10-S	25	10	0.10		✓		4.00"(102)	8.05"(205)	2.50"(64)
RP330-25-10-W	25	10	0.10	✓			*	*	*
RP330-25-100-C	25	100	1.00			✓	*	*	*
RP330-25-100-S	25	100	1.00		✓		4.00"(102)	8.05"(205)	2.50"(64)
RP330-25-100-W	25	100	1.00	✓			*	*	*
RP330-25-1000-C	25	1000	10.00			✓	*	*	*
RP330-25-1000-S	25	1000	10.00		✓		4.00"(102)	8.05"(205)	2.50"(64)
RP330-25-1000-W	25	1000	10.00	✓			*	*	*
RP330-25-2000-C	25	2000	20.00			✓	*	*	*
RP330-25-2000-S	25	2000	20.00		✓		4.00"(102)	8.05"(205)	2.50"(64)

ADDITIONAL MODEL NO. >>

RP330

3-PHASE DELTA DUAL STAGE POWER LINE FILTER

MODEL NO.	RATED CURRENT, A @ 40° C	Y-CAP, nF	LEAKAGE CURRENT mA, @ 480V AC/60 Hz	TERMINAL OPTIONS			MAX. DIMENSIONS" (MM)		
				(W) INPUT/ OUTPUT	(S) INPUT/ OUTPUT	(C) INPUT/ OUTPUT	WIDTH	(LENGTH)	HEIGHT
RP330-25-2000-W	25	2000	20.00	✓			*	*	*
RP330-50-0-C	50	0	-			✓	*	*	*
RP330-50-0-S	50	0	-		✓		4.00"(102)	8.05"(205)	2.50"(64)
RP330-50-0-W	50	0	-	✓			*	*	*
RP330-50-10-C	50	10	0.10			✓	*	*	*
RP330-50-10-S	50	10	0.10		✓		4.00"(102)	8.05"(205)	2.50"(64)
RP330-50-10-W	50	10	0.10	✓			*	*	*
RP330-50-100-C	50	100	1.00			✓	*	*	*
RP330-50-100-S	50	100	1.00		✓		4.00"(102)	8.05"(205)	2.50"(64)
RP330-50-100-W	50	100	1.00	✓			*	*	*
RP330-50-200-S	50	200	2.00		✓		4.00"(102)	8.05"(205)	2.50"(64)
RP330-50-1000-C	50	1000	10.00			✓	*	*	*
RP330-50-1000-S	50	1000	10.00		✓		4.00"(102)	8.05"(205)	2.50"(64)
RP330-50-1000-W	50	1000	10.00	✓			*	*	*
RP330-50-2000-C	50	2000	20.00			✓	*	*	*
RP330-50-2000-S	50	2000	20.00		✓		4.00"(102)	8.05"(205)	2.50"(64)
RP330-50-2000-W	50	2000	20.00	✓			*	*	*
RP330-80-0-C	80	0	-			✓	*	*	*
RP330-80-0-S	80	0	-		✓		3.50"(89)	10.36"(263)	2.75"(70)
RP330-80-0-W	80	0	-	✓			*	*	*
RP330-80-10-C	80	10	0.10			✓	*	*	*
RP330-80-10-S	80	10	0.10		✓		3.50"(89)	10.36"(263)	2.75"(70)
RP330-80-10-W	80	10	0.10	✓			*	*	*
RP330-80-100-C	80	100	1.00			✓	*	*	*
RP330-80-100-S	80	100	1.00		✓		3.50"(89)	10.36"(263)	2.75"(70)
RP330-80-100-W	80	100	1.00	✓			*	*	*
RP330-80-1000-C	80	1000	10.00			✓	*	*	*
RP330-80-1000-S	80	1000	10.00		✓		3.50"(89)	10.36"(263)	2.75"(70)
RP330-80-1000-W	80	1000	10.00	✓			*	*	*
RP330-80-2000-C	80	2000	20.00			✓	*	*	*
RP330-80-2000-S	80	2000	20.00		✓		3.50"(89)	10.36"(263)	2.75"(70)
RP330-80-2000-W	80	2000	20.00	✓			*	*	*
RP330-100-0-C	100	0	-			✓	*	*	*

ADDITIONAL MODEL NO. >>

RP330

3-PHASE DELTA DUAL STAGE POWER LINE FILTER

MODEL NO.	RATED CURRENT, A @ 40° C	Y-CAP, nF	LEAKAGE CURRENT mA, @ 480V AC/60 Hz	TERMINAL OPTIONS			MAX. DIMENSIONS" (MM)		
				(W) INPUT/ OUTPUT	(S) INPUT/ OUTPUT	(C) INPUT/ OUTPUT	WIDTH	(LENGTH)	HEIGHT
RP330-100-0-S	100	0	-		✓		3.50"(89)	10.36"(263)	2.75"(70)
RP330-100-0-W	100	0	-	✓			*	*	*
RP330-100-10-C	100	10	0.10			✓	*	*	*
RP330-100-10-S	100	10	0.10		✓		3.50"(89)	10.36"(263)	2.75"(70)
RP330-100-10-W	100	10	0.10	✓			*	*	*
RP330-100-100-C	100	100	1.00			✓	*	*	*
RP330-100-100-S	100	100	1.00		✓		3.50"(89)	10.36"(263)	2.75"(70)
RP330-100-100-W	100	100	1.00	✓			*	*	*
RP330-100-1000-C	100	1000	10.00			✓	*	*	*
RP330-100-1000-S	100	1000	10.00		✓		3.50"(89)	10.36"(263)	2.75"(70)
RP330-100-1000-W	100	1000	10.00	✓			*	*	*
RP330-100-2000-C	100	2000	20.00			✓	*	*	*
RP330-100-2000-S	100	2000	20.00		✓		3.50"(89)	10.36"(263)	2.75"(70)
RP330-100-2000-W	100	2000	20.00	✓			*	*	*
RP330-150-0-C	150	0	-			✓	*	*	*
RP330-150-0-S	150	0	-		✓		6.60"(168)	12.94"(329)	4.50"(114)
RP330-150-0-W	150	0	-	✓			*	*	*
RP330-150-10-C	150	10	0.10			✓	*	*	*
RP330-150-10-S	150	10	0.10		✓		6.60"(168)	12.94"(329)	4.50"(114)
RP330-150-10-W	150	10	0.10	✓			*	*	*
RP330-150-100-C	150	100	1.00			✓	*	*	*
RP330-150-100-S	150	100	1.00		✓		6.60"(168)	12.94"(329)	4.50"(114)
RP330-150-100-W	150	100	1.00	✓			*	*	*
RP330-150-1000-C	150	1000	10.00			✓	*	*	*
RP330-150-1000-S	150	1000	10.00		✓		6.60"(168)	12.94"(329)	4.50"(114)
RP330-150-1000-W	150	1000	10.00	✓			*	*	*
RP330-150-2000-C	150	2000	20.00			✓	*	*	*
RP330-150-2000-S	150	2000	20.00		✓		6.60"(168)	12.94"(329)	4.50"(114)
RP330-150-2000-W	150	2000	20.00	✓			*	*	*
RP330-200-0-C	200	0	-			✓	*	*	*
RP330-200-0-S	200	0	-		✓		6.60"(168)	12.94"(329)	4.50"(114)
RP330-200-0-W	200	0	-	✓			*	*	*
RP330-200-10-C	200	10	0.10			✓	*	*	*
RP330-200-10-S	200	10	0.10		✓		6.60"(168)	12.94"(329)	4.50"(114)

ADDITIONAL MODEL NO. >>

RP330

3-PHASE **DELTA** DUAL STAGE POWER LINE FILTER

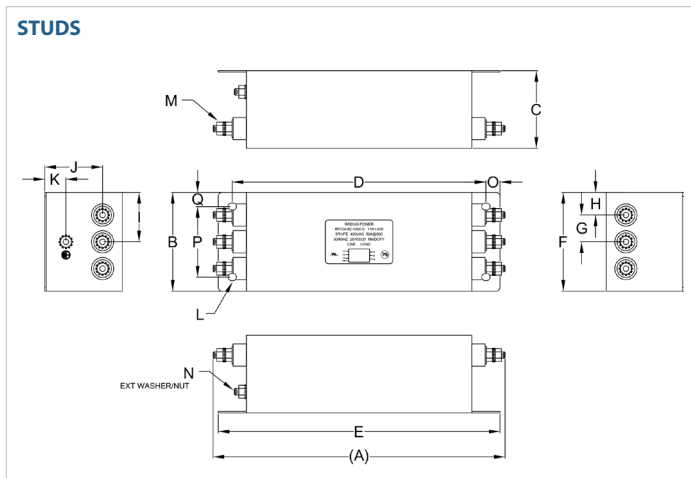
MODEL NO.	RATED CURRENT, A @ 40° C	Y-CAP, nF	LEAKAGE CURRENT mA, @ 480V AC/60 Hz	TERMINAL OPTIONS			MAX. DIMENSIONS" (MM)		
				(W) INPUT/ OUTPUT	(S) INPUT/ OUTPUT	(C) INPUT/ OUTPUT	WIDTH	(LENGTH)	HEIGHT
RP330-200-10-W	200	10	0.10	✓			*	*	*
RP330-200-100-C	200	100	1.00			✓	*	*	*
RP330-200-100-S	200	100	1.00		✓		6.60"(168)	12.94"(329)	4.50"(114)
RP330-200-100-W	200	100	1.00	✓			*	*	*
RP330-200-1000-C	200	1000	10.00			✓	*	*	*
RP330-200-1000-S	200	1000	10.00		✓		6.60"(168)	12.94"(329)	4.50"(114)
RP330-200-1000-W	200	1000	10.00	✓			*	*	*
RP330-200-2000-C	200	2000	20.00			✓	*	*	*
RP330-200-2000-S	200	2000	20.00		✓		6.60"(168)	12.94"(329)	4.50"(114)
RP330-200-2000-W	200	2000	20.00	✓			*	*	*
RP330-250-0-S	250	0	-		✓		6.60"(168)	12.94"(329)	4.50"(114)
RP330-250-10-S	250	10	0.10		✓		6.60"(168)	12.94"(329)	4.50"(114)
RP330-250-100-S	250	100	1.00		✓		6.60"(168)	12.94"(329)	4.50"(114)
RP330-250-1000-S	250	1000	10.00		✓		6.60"(168)	12.94"(329)	4.50"(114)
RP330-250-2000-S	250	2000	20.00		✓		6.60"(168)	12.94"(329)	4.50"(114)

*Contact factory for dimensions.

RP330

3-PHASE DELTA DUAL STAGE POWER LINE FILTER

RP330 MECHANICAL OUTLINES (MM)



SERIES	(A)	B	C	D	E	F	G	H	I	J	K	L	M	N	O	P	Q
STUDS (10/16A)	7.05" (179)	3.00" (76)	2.50" (64)	6.00" (152)	6.56" (167)	3.00" (76)	1.00" (25)	0.50" (13)	2.00" (51)	1.90" (48)	0.50" (13)	Ø 0.29" Ø 7.6x6.4, 4x	STUD M5, 6x	STUD GND M5	0.28" (7)	2.00" (51)	0.50" (13)
STUDS (25/50A)	8.05" (205)	4.00" (102)	2.50" (64)	6.95" (176)	7.56" (192)	4.00" (102)	1.00" (25)	1.00" (25)	3.00" (76)	1.90" (48)	0.70" (18)	Ø 0.25" Ø 6.35x7.62 4x	STUD, M5, 6x	STUD, GND, M5	N/A	2.75" (70)	N/A
STUDS (80/100A)	10.36" (263)	3.50" (89)	2.75" (70)	9.00" (229)	10.00" (254)	3.50" (89)	0.96" (24)	0.80" (20)	1.75" (44)	2.05" (52)	0.75" (19)	Ø 0.25" Ø 6.4x7.6, 4x	STUD M6, 6x	STUD GND M6	0.50" (13)	2.50" (64)	0.50" (13)
STUDS (150/200/250A)	12.94" (329)	6.60" (168)	4.50" (114)	11.00" (279)	12.00" (305)	6.48" (165)	1.65" (42)	1.65" (42)	3.30" (84)	3.50" (89)	1.00" (25)	Ø 0.25" Ø 6.35x15.25, 4x	STUD, M10, 6x	STUD, GND, M10	N/A	3.95" (100)	N/A

TYPICAL TOLERANCE: +/-0.02" (0.50MM)

RP330

3-PHASE **DELTA** DUAL STAGE POWER LINE FILTER

TYPICAL INSERTION LOSS, dB (50/50 Ohm)

Amps	Freq (MHz)	0.15	0.5	1.0	10	30
10	CM (dB)	55	68	70	50	40
	DM (dB)	52	65	70	60	30
16	CM (dB)	53	65	70	50	40
	DM (dB)	52	64	68	58	34
25	CM (dB)	56	66	72	54	36
	DM (dB)	58	70	70	54	42
50	CM (dB)	50	63	68	49	38
	DM (dB)	57	65	70	52	34
80	CM (dB)	52	65	70	50	37
	DM (dB)	55	60	65	58	40
100	CM (dB)	52	65	70	50	37
	DM (dB)	55	60	65	58	40
150	CM (dB)	60	70	70	52	38
	DM (dB)	54	65	70	60	40
200	CM (dB)	60	70	70	52	38
	DM (dB)	54	65	70	60	40
250	CM (dB)	48	57	65	50	32
	DM (dB)	50	65	70	48	30

X-ON Electronics

Largest Supplier of Electrical and Electronic Components

Click to view similar products for [Power Line Filters](#) category:

Click to view products by [Astrodyne](#) manufacturer:

Other Similar products are found below :

[6609019-3](#) [6609026-5](#) [6609030-6](#) [6609973-2](#) [D30A](#) [7-1609090-5](#) [F2810](#) [F4456A](#) [F7382Z](#) [F7863Z](#) [FAHAV3100ZC000](#) [806276](#) [FN2020B-1-06](#) [FN2080B-10-06](#) [FN2410H-32-33](#) [FN2410H-80-34](#) [FP144](#) [FS4153-20-06](#) [FS4353-500-99](#) [12-MMB-030-11-D](#) [DB4-393](#) [15811T200](#) [20B1](#) [LC630](#) [2B1](#) [1609080-2](#) [1609993-8](#) [1-6609070-1](#) [F1100AA02](#) [F1150CC10](#) [F1500CA10](#) [F1500CA15](#) [F4041Z](#) [F7585E](#) [1B1](#) [FN2070A-16-06](#) [FN2090A-20-06](#) [FN2090B-12-06](#) [FN2090Z-1-06](#) [FN2410H-25-33](#) [FN2410H-60-34](#) [FN2410H-8-44](#) [FN2412H-8-44](#) [FN323B-6-01](#) [FN3258H-130-35](#) [FN610R-3-06](#) [20EHQ7](#) [20EHZ7](#) [20K1](#) [30B6](#)