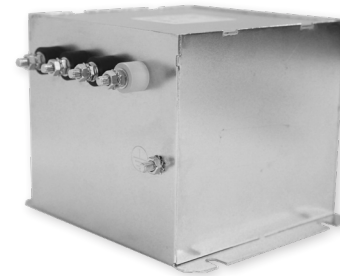


RP415

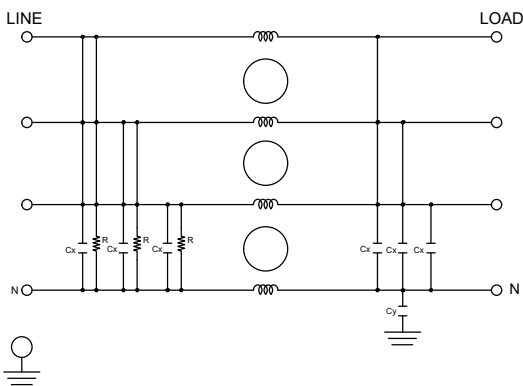
3-PHASE WYE COMPACT SINGLE STAGE POWER LINE FILTER

FEATURES

- » Rated currents include **8A, 16A, 25A, 36A, 64A, 80A, 120A, and 160A**
- » Single Stage Line Filter
- » Available with **W** (wires), **S** (studs) and **C** (connectors) option
- » Compact Design
- » Agency Approved to UL1283 / 60929, CSA C22.2, EN 60939
- » Y-cap value can be adjusted to fit specification

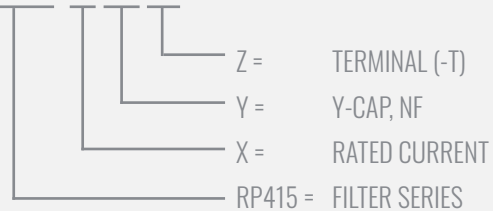


ELECTRICAL SCHEMATIC



HOW TO ORDER

RP415- X - Y - Z



NOTE: USE ANY COMBINATION OF -X (AMPS) WITH ANY -Y RATINGS

E.G. **RP415-8-100-S** (8AMPS WITH 100 NF YCAP)

For **X, Y** and **Z** options see product specification table.

SPECIFICATIONS

OPERATING FREQUENCY	50/60Hz
USABLE FREQUENCY	DC - 400 Hz
MAX. OPERATING VOLTAGE*	480V +10%
AMBIENT TEMPERATURE	-25 TO 50°C
CLIMATIC CATEGORY	25/100/21
TERMINALS (-T)	WIRE LEADS
	STUDS 8-36A(M5)
	64-80A (M6)
	120-160A(M10)
	CONNECTORS
TYP. WEIGHT, LBS (KG)	3.9 - 16.0 (1.8 - 7.3)

TYPICAL LEAKAGE CURRENT

@ 480 VAC 60 Hz	0 - 20.0 mA Max.
-----------------	------------------

HIPOT RATINGS

LINE TO GROUND	3500 VDC
----------------	----------

TYPICAL APPLICATIONS

- ✓ Power conversion systems
- ✓ Processing equipment
- ✓ Alternative energy equipment (EV charging & solar)
- ✓ Factory Machinery

RP415

3-PHASE WYE COMPACT SINGLE STAGE POWER LINE FILTER

MODEL NO.	RATED CURRENT, A @ 40° C	Y-CAP, nF	LEAKAGE CURRENT mA, @ 480V AC/60 Hz	TERMINAL OPTIONS			MAX. DIMENSIONS" (MM)		
				(W) INPUT/ OUTPUT	(S) INPUT/ OUTPUT	(C) INPUT/ OUTPUT	WIDTH	(LENGTH)	HEIGHT
RP415-8-0-S	8	0	-		✓		5.63"(143)	6.69"(170)	3.15"(80)
RP415-8-0-W	8	0	-	✓			*	*	*
RP415-8-10-S	8	10	0.10		✓		5.63"(143)	6.69"(170)	3.15"(80)
RP415-8-10-W	8	10	0.10	✓			*	*	*
RP415-8-100-S	8	100	1.00		✓		5.63"(143)	6.69"(170)	3.15"(80)
RP415-8-100-W	8	100	1.00	✓			*	*	*
RP415-8-1000-S	8	1000	10.00		✓		5.63"(143)	6.69"(170)	3.15"(80)
RP415-8-1000-W	8	1000	10.00	✓			*	*	*
RP415-8-2000-S	8	2000	20.00		✓		5.63"(143)	6.69"(170)	3.15"(80)
RP415-8-2000-W	8	2000	20.00	✓			*	*	*
RP415-16-0-S	16	0	-		✓		5.63"(143)	6.69"(170)	3.15"(80)
RP415-16-0-W	16	0	-	✓			*	*	*
RP415-16-10-S	16	10	0.10		✓		5.63"(143)	6.69"(170)	3.15"(80)
RP415-16-10-W	16	10	0.10	✓			*	*	*
RP415-16-100-S	16	100	1.00		✓		5.63"(143)	6.69"(170)	3.15"(80)
RP415-16-100-W	16	100	1.00	✓			*	*	*
RP415-16-1000-S	16	1000	10.00		✓		5.63"(143)	6.69"(170)	3.15"(80)
RP415-16-1000-W	16	1000	10.00	✓			*	*	*
RP415-16-2000-S	16	2000	20.00		✓		5.63"(143)	6.69"(170)	3.15"(80)
RP415-16-2000-W	16	2000	20.00	✓			*	*	*
RP415-25-0-C	25	0	-			✓	*	*	*
RP415-25-0-S	25	0	-		✓		6.02"(153)	7.09"(180)	4.53"(115)
RP415-25-0-W	25	0	-	✓			*	*	*
RP415-25-10-C	25	10	0.10			✓	*	*	*
RP415-25-10-S	25	10	0.10		✓		6.02"(153)	7.09"(180)	4.53"(115)
RP415-25-10-W	25	10	0.10	✓			*	*	*
RP415-25-100-C	25	100	1.00			✓	*	*	*
RP415-25-100-S	25	100	1.00		✓		6.02"(153)	7.09"(180)	4.53"(115)
RP415-25-100-W	25	100	1.00	✓			*	*	*
RP415-25-1000-C	25	1000	10.00			✓	*	*	*
RP415-25-1000-S	25	1000	10.00		✓		6.02"(153)	7.09"(180)	4.53"(115)
RP415-25-1000-W	25	1000	10.00	✓			*	*	*
RP415-25-2000-C	25	2000	20.00			✓	*	*	*
RP415-25-2000-S	25	2000	20.00		✓		6.02"(153)	7.09"(180)	4.53"(115)

ADDITIONAL MODEL NO. >>

RP415

3-PHASE WYE COMPACT SINGLE STAGE POWER LINE FILTER

MODEL NO.	RATED CURRENT, A @ 40° C	Y-CAP, nF	LEAKAGE CURRENT mA, @ 480V AC/60 Hz	TERMINAL OPTIONS			MAX. DIMENSIONS" (MM)		
				(W) INPUT/ OUTPUT	(S) INPUT/ OUTPUT	(C) INPUT/ OUTPUT	WIDTH	(LENGTH)	HEIGHT
RP415-25-2000-W	25	2000	20.00	✓			*	*	*
RP415-36-0-C	36	0	-			✓	*	*	*
RP415-36-0-S	36	0	-		✓		6.02"(153)	7.09"(180)	4.53"(115)
RP415-36-0-W	36	0	-	✓			*	*	*
RP415-36-10-C	36	10	0.10			✓	*	*	*
RP415-36-10-S	36	10	0.10		✓		6.02"(153)	7.09"(180)	4.53"(115)
RP415-36-10-W	36	10	0.10	✓			*	*	*
RP415-36-100-C	36	100	1.00			✓	*	*	*
RP415-36-100-S	36	100	1.00		✓		6.02"(153)	7.09"(180)	4.53"(115)
RP415-36-100-W	36	100	1.00	✓			*	*	*
RP415-36-1000-C	36	1000	10.00			✓	*	*	*
RP415-36-1000-S	36	1000	10.00		✓		6.02"(153)	7.09"(180)	4.53"(115)
RP415-36-1000-W	36	1000	10.00	✓			*	*	*
RP415-36-2000-C	36	2000	20.00			✓	*	*	*
RP415-36-2000-S	36	2000	20.00		✓		6.02"(153)	7.09"(180)	4.53"(115)
RP415-36-2000-W	36	2000	20.00	✓			*	*	*
RP415-64-0-C	64	0	-			✓	*	*	*
RP415-64-0-S	64	0	-		✓		6.02"(153)	7.91"(201)	4.92"(125)
RP415-64-0-W	64	0	-	✓			*	*	*
RP415-64-10-C	64	10	0.10			✓	*	*	*
RP415-64-10-S	64	10	0.10		✓		6.02"(153)	7.91"(201)	4.92"(125)
RP415-64-10-W	64	10	0.10	✓			*	*	*
RP415-64-100-C	64	100	1.00			✓	*	*	*
RP415-64-100-S	64	100	1.00		✓		6.02"(153)	7.91"(201)	4.92"(125)
RP415-64-100-W	64	100	1.00	✓			*	*	*
RP415-64-1000-C	64	1000	10.00			✓	*	*	*
RP415-64-1000-S	64	1000	10.00		✓		6.02"(153)	7.91"(201)	4.92"(125)
RP415-64-1000-W	64	1000	10.00	✓			*	*	*
RP415-64-2000-C	64	2000	20.00			✓	*	*	*
RP415-64-2000-S	64	2000	20.00		✓		6.02"(153)	7.91"(201)	4.92"(125)
RP415-64-2000-W	64	2000	20.00	✓			*	*	*
RP415-80-0-C	80	0	-			✓	*	*	*
RP415-80-0-S	80	0	-		✓		6.69"(170)	8.66"(220)	4.33"(110)
RP415-80-0-W	80	0	-	✓			*	*	*

ADDITIONAL MODEL NO. >>

RP415

3-PHASE WYE COMPACT SINGLE STAGE POWER LINE FILTER

MODEL NO.	RATED CURRENT, A @ 40° C	Y-CAP, nF	LEAKAGE CURRENT mA, @ 480V AC/60 Hz	TERMINAL OPTIONS			MAX. DIMENSIONS" (MM)		
				(W) INPUT/ OUTPUT	(S) INPUT/ OUTPUT	(C) INPUT/ OUTPUT	WIDTH	(LENGTH)	HEIGHT
RP415-80-10-C	80	10	0.10			✓	*	*	*
RP415-80-10-S	80	10	0.10		✓		6.69"(170)	8.66"(220)	4.33"(110)
RP415-80-10-W	80	10	0.10	✓			*	*	*
RP415-80-100-C	80	100	1.00			✓	*	*	*
RP415-80-100-S	80	100	1.00		✓		6.69"(170)	8.66"(220)	4.33"(110)
RP415-80-100-W	80	100	1.00	✓			*	*	*
RP415-80-1000-C	80	1000	10.00			✓	*	*	*
RP415-80-1000-S	80	1000	10.00		✓		6.69"(170)	8.66"(220)	4.33"(110)
RP415-80-1000-W	80	1000	10.00	✓			*	*	*
RP415-80-2000-C	80	2000	20.00			✓	*	*	*
RP415-80-2000-S	80	2000	20.00		✓		6.69"(170)	8.66"(220)	4.33"(110)
RP415-80-2000-W	80	2000	20.00	✓			*	*	*
RP415-120-0-C	120	0	-			✓	*	*	*
RP415-120-0-S	120	0	-		✓		6.69"(170)	9.80"(249)	5.12"(130)
RP415-120-0-W	120	0	-	✓			*	*	*
RP415-120-10-C	120	10	0.10			✓	*	*	*
RP415-120-10-S	120	10	0.10		✓		6.69"(170)	9.80"(249)	5.12"(130)
RP415-120-10-W	120	10	0.10	✓			*	*	*
RP415-120-100-C	120	100	1.00			✓	*	*	*
RP415-120-100-S	120	100	1.00		✓		6.69"(170)	9.80"(249)	5.12"(130)
RP415-120-100-W	120	100	1.00	✓			*	*	*
RP415-120-1000-C	120	1000	10.00			✓	*	*	*
RP415-120-1000-S	120	1000	10.00		✓		6.69"(170)	9.80"(249)	5.12"(130)
RP415-120-1000-W	120	1000	10.00	✓			*	*	*
RP415-120-2000-C	120	2000	20.00			✓	*	*	*
RP415-120-2000-S	120	2000	20.00		✓		6.69"(170)	9.80"(249)	5.12"(130)
RP415-120-2000-W	120	2000	20.00	✓			*	*	*
RP415-160-0-C	160	0	-			✓	*	*	*
RP415-160-0-S	160	0	-		✓		6.69"(170)	10.87"(276)	5.12"(130)
RP415-160-0-W	160	0	-	✓			*	*	*
RP415-160-10-C	160	10	0.10			✓	*	*	*
RP415-160-10-S	160	10	0.10		✓		6.69"(170)	10.87"(276)	5.12"(130)
RP415-160-10-W	160	10	0.10	✓			*	*	*
RP415-160-100-C	160	100	1.00			✓	*	*	*

ADDITIONAL MODEL NO. >>

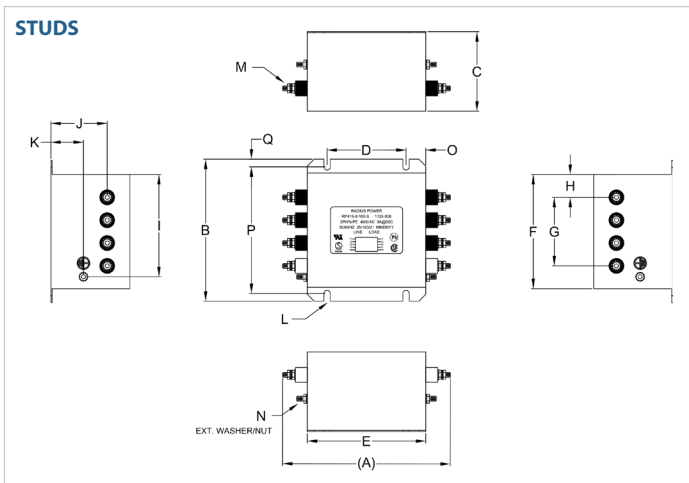
RP415

3-PHASE WYE COMPACT SINGLE STAGE POWER LINE FILTER

MODEL NO.	RATED CURRENT, A @ 40° C	Y-CAP, nF	LEAKAGE CURRENT mA, @ 480V AC/60 Hz	TERMINAL OPTIONS			MAX. DIMENSIONS" (MM)		
				(W) INPUT/OUTPUT	(S) INPUT/OUTPUT	(C) INPUT/OUTPUT	WIDTH	(LENGTH)	HEIGHT
RP415-160-100-S	160	100	1.00		✓		6.69"(170)	10.87"(276)	5.12"(130)
RP415-160-100-W	160	100	1.00	✓			*	*	*
RP415-160-1000-C	160	1000	10.00			✓	*	*	*
RP415-160-1000-S	160	1000	10.00		✓		6.69"(170)	10.87"(276)	5.12"(130)
RP415-160-1000-W	160	1000	10.00	✓			*	*	*
RP415-160-2000-C	160	2000	20.00			✓	*	*	*
RP415-160-2000-S	160	2000	20.00		✓		6.69"(170)	10.87"(276)	5.12"(130)
RP415-160-2000-W	160	2000	20.00	✓			*	*	*

*Contact factory for dimensions.

RP415 MECHANICAL OUTLINES (MM)



SERIES	(A)	B	C	D	E	F	G	H	I	J	K	L	M	N	O	P	Q
STUDS (8/16A)	6.69" (170)	5.63" (143)	3.15" (80)	3.15" (80)	4.72" (120)	4.53" (115)	2.72" (69)	0.91" (23)	4.06" (103)	2.24" (57)	1.30" (33)	Ø 0.43x0.25", 4x (Ø 11.0x6.51, 4x)	STUD, M5, 8x	STUD, GND, M5, 2x	0.79" (20)	5.02" (128)	0.31" (8)
STUDS (25/36A)	7.09" (180)	6.02" (153)	4.53" (115)	3.54" (90)	5.12" (130)	4.92" (125)	2.72" (69)	1.10" (28)	4.41" (112)	3.62" (92)	1.97" (50)	Ø 0.43x0.25", 4x (Ø 11.0x6.51, 4x)	STUD, M5, 8x	STUD, GND, M5, 2x	0.79" (20)	5.41" (138)	0.31" (8)
STUDS (64A)	7.91" (201)	6.02" (153)	4.92" (125)	3.94" (100)	5.51" (140)	4.92" (125)	3.11" (79)	0.91" (23)	4.41" (112)	4.02" (102)	1.97" (50)	Ø 0.43x0.25", 4x (Ø 11.0x6.51, 4x)	STUD, M6, 8x	STUD, GND, M6, 2x	0.79" (20)	5.41" (138)	0.31" (8)
STUDS (80A)	8.66" (220)	6.69" (170)	4.33" (110)	4.33" (110)	6.30" (160)	5.51" (140)	3.72" (95)	0.90" (23)	4.83" (123)	3.43" (87)	1.18" (30)	Ø 0.45x0.25", 4x (Ø 11.5x6.5, 4x)	STUD, M6, 8x	STUD, GND, M6, 2x	0.98" (25)	6.04" (154)	0.32" (8)
STUDS (120A)	9.80" (249)	6.69" (170)	5.12" (130)	5.12" (130)	7.09" (180)	5.51" (140)	3.72" (95)	0.90" (23)	4.82" (123)	4.17" (106)	1.18" (30)	Ø 0.45x0.25", 4x (Ø 11.5x6.5, 4x)	STUD, M10, 8x	STUD, GND, M10, 2x	0.98" (25)	6.04" (154)	0.33" (8)
STUDS (160A)	10.87" (276)	6.69" (170)	5.12" (130)	5.91" (150)	7.87" (200)	5.51" (140)	3.72" (95)	0.90" (23)	4.82" (123)	4.17" (106)	1.18" (30)	Ø 0.45x0.25", 4x (Ø 11.5x6.5, 4x)	STUD, M10, 8x	STUD, GND, M10	0.98" (25)	6.04" (154)	0.32" (8)

TYPICAL TOLERANCE: +/-0.02" (0.50MM)

RP415

3-PHASE **WYE** COMPACT SINGLE STAGE POWER LINE FILTER

TYPICAL INSERTION LOSS, dB (50/50 Ohm)

Amps	Freq (MHz)	0.15	0.5	1.0	10	30
8	CM (dB)	65	58	55	45	32
	DM (dB)	52	80	78	65	60
16	CM (dB)	50	46	45	45	40
	DM (dB)	50	75	75	70	70
25	CM (dB)	55	65	60	50	45
	DM (dB)	60	80	75	60	60
36	CM (dB)	50	60	55	40	40
	DM (dB)	60	76	75	65	55
64	CM (dB)	50	65	60	50	40
	DM (dB)	60	80	75	60	60
80	CM (dB)	45	65	60	46	40
	DM (dB)	60	80	80	65	60
120	CM (dB)	65	70	70	60	50
	DM (dB)	60	75	75	60	55
160	CM (dB)	55	65	60	48	40
	DM (dB)	50	75	70	45	45

X-ON Electronics

Largest Supplier of Electrical and Electronic Components

Click to view similar products for [Power Line Filters](#) category:

Click to view products by [Astrodyne](#) manufacturer:

Other Similar products are found below :

[6609019-3](#) [6609026-5](#) [6609030-6](#) [6609973-2](#) [D30A](#) [7-1609090-5](#) [F2810](#) [F4456A](#) [F7382Z](#) [F7863Z](#) [FAHAV3100ZC000](#) [806276](#) [FN2020B-1-06](#) [FN2080B-10-06](#) [FN2410H-32-33](#) [FN2410H-80-34](#) [FP144](#) [FS4153-20-06](#) [FS4353-500-99](#) [12-MMB-030-11-D](#) [DB4-393](#) [15811T200](#) [20B1](#) [LC630](#) [2B1](#) [1609080-2](#) [1609993-8](#) [1-6609070-1](#) [F1100AA02](#) [F1150CC10](#) [F1500CA10](#) [F1500CA15](#) [F4041Z](#) [F7585E](#) [1B1](#) [FN2070A-16-06](#) [FN2090A-20-06](#) [FN2090B-12-06](#) [FN2090Z-1-06](#) [FN2410H-25-33](#) [FN2410H-60-34](#) [FN2410H-8-44](#) [FN2412H-8-44](#) [FN323B-6-01](#) [FN610R-3-06](#) [20EHQ7](#) [20EHZ7](#) [20K1](#) [30B6](#) [3K1](#)