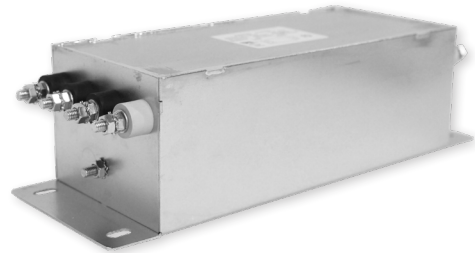


RP480

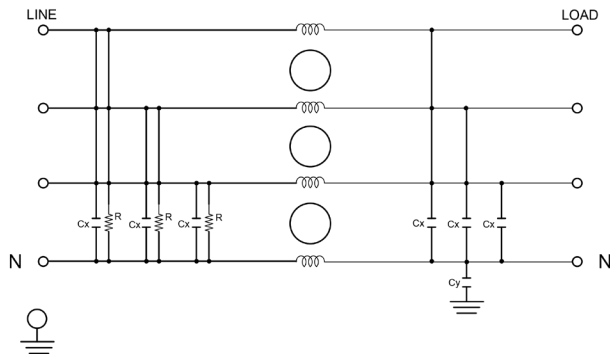
3-PHASE WYE SINGLE STAGE POWER LINE FILTER, 600 V

FEATURES

- » Rated currents include **15A, 30A, 50A, 80A, 100A, 150A, 200A, and 300A**
- » Single Stage Line Filter
- » Available with **W** (wires), **S** (studs) and **C** (connectors) option
- » Agency Approved to UL1283 / 60929, CSA C22.2, EN 60939
- » Y-cap value can be adjusted to fit specification

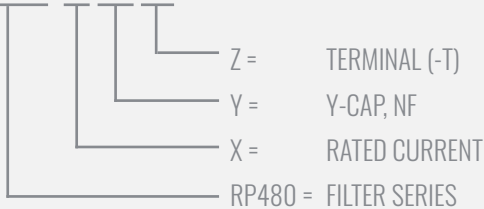


ELECTRICAL SCHEMATIC



HOW TO ORDER

RP480-X-Y-Z



NOTE: USE ANY COMBINATION OF -X (AMPS) WITH ANY -Y RATINGS
E.G. **RP480-15-100-S** (15AMPS WITH 100 NF YCAP)

For **X** options see product specification table.

SPECIFICATIONS

OPERATING FREQUENCY	50/60Hz
USABLE FREQUENCY	DC - 400 Hz
MAX. OPERATING VOLTAGE*	480V +10%
AMBIENT TEMPERATURE	-25 TO 50°C
CLIMATIC CATEGORY	25/100/21
TERMINALS (-T)	WIRE LEADS
	STUDS 15-50A (M5),
	80-100A (M6),
	150-200A(M10), 300A(M12)
	CONNECTORS

TYP. WEIGHT, LBS (KG) 7.0 - 30.0 (3.18 - 13.61)

TYPICAL LEAKAGE CURRENT

@ 480 VAC 60 Hz 0 - 20.0 mA Max.

HIPOT RATINGS

LINE TO GROUND 3800 VDC

TYPICAL APPLICATIONS

- ✓ Power conversion systems
- ✓ Processing equipment
- ✓ Alternative energy equipment (EV charging & solar)
- ✓ Factory Machinery

RP480

3-PHASE WYE SINGLE STAGE POWER LINE FILTER, 600 V

MODEL NO.	RATED CURRENT, A @ 40° C	Y-CAP, nF	LEAKAGE CURRENT mA, @ 480V AC/60 Hz	TERMINAL OPTIONS			MAX. DIMENSIONS" (MM)		
				(W) INPUT/ OUTPUT	(S) INPUT/ OUTPUT	(C) INPUT/ OUTPUT	WIDTH	(LENGTH)	HEIGHT
RP480-15-0-S	15	0	-		✓		3.50"(89)	10.00"(254)	2.75"(70)
RP480-15-0-W	15	0	-	✓			*	*	*
RP480-15-10-S	15	10	0.15		✓		3.50"(89)	10.00"(254)	2.75"(70)
RP480-15-10-W	15	10	0.15	✓			*	*	*
RP480-15-100-S	15	100	1.50		✓		3.50"(89)	10.00"(254)	2.75"(70)
RP480-15-100-W	15	100	1.50	✓			*	*	*
RP480-15-1000-S	15	1000	15.00		✓		3.50"(89)	10.00"(254)	2.75"(70)
RP480-15-1000-W	15	1000	15.00	✓			*	*	*
RP480-15-2000-S	15	2000	20.00		✓		3.50"(89)	10.00"(254)	2.75"(70)
RP480-15-2000-W	15	2000	20.00	✓			*	*	*
RP480-30-0-C	30	0	-			✓	*	*	*
RP480-30-0-S	30	0	-		✓		3.50"(89)	10.00"(254)	2.75"(70)
RP480-30-0-W	30	0	-	✓			*	*	*
RP480-30-10-C	30	10	0.15			✓	*	*	*
RP480-30-10-S	30	10	0.15		✓		3.50"(89)	10.00"(254)	2.75"(70)
RP480-30-10-W	30	10	0.15	✓			*	*	*
RP480-30-100-C	30	100	1.50			✓	*	*	*
RP480-30-100-S	30	100	1.50		✓		3.50"(89)	10.00"(254)	2.75"(70)
RP480-30-100-W	30	100	1.50	✓			*	*	*
RP480-30-1000-C	30	1000	15.00			✓	*	*	*
RP480-30-1000-S	30	1000	15.00		✓		3.50"(89)	10.00"(254)	2.75"(70)
RP480-30-1000-W	30	1000	15.00	✓			*	*	*
RP480-30-2000-C	30	2000	20.00			✓	*	*	*
RP480-30-2000-S	30	2000	20.00		✓		3.50"(89)	10.00"(254)	2.75"(70)
RP480-30-2000-W	30	2000	20.00	✓			*	*	*
RP480-50-0-C	50	0	-			✓	*	*	*
RP480-50-0-S	50	0	-		✓		3.50"(89)	10.00"(254)	2.75"(70)
RP480-50-0-W	50	0	-	✓			*	*	*
RP480-50-10-C	50	10	0.15			✓	*	*	*
RP480-50-10-S	50	10	0.15		✓		3.50"(89)	10.00"(254)	2.75"(70)
RP480-50-10-W	50	10	0.15	✓			*	*	*
RP480-50-100-C	50	100	1.50			✓	*	*	*
RP480-50-100-S	50	100	1.50		✓		3.50"(89)	10.00"(254)	2.75"(70)
RP480-50-100-W	50	100	1.50	✓			*	*	*

ADDITIONAL MODEL NO. >>

RP480

3-PHASE WYE SINGLE STAGE POWER LINE FILTER, 600 V

MODEL NO.	RATED CURRENT, A @ 40° C	Y-CAP, nF	LEAKAGE CURRENT mA, @ 480V AC/60 Hz	TERMINAL OPTIONS			MAX. DIMENSIONS" (MM)		
				(W) INPUT/OUTPUT	(S) INPUT/OUTPUT	(C) INPUT/OUTPUT	WIDTH	(LENGTH)	HEIGHT
RP480-50-1000-C	50	1000	15.00			✓	*	*	*
RP480-50-1000-S	50	1000	15.00		✓		3.50"(89)	10.00"(254)	2.75"(70)
RP480-50-1000-W	50	1000	15.00	✓			*	*	*
RP480-50-2000-C	50	2000	20.00			✓	*	*	*
RP480-50-2000-S	50	2000	20.00		✓		3.50"(89)	10.00"(254)	2.75"(70)
RP480-50-2000-W	50	2000	20.00	✓			*	*	*
RP480-80-0-C	80	0	-			✓	*	*	*
RP480-80-0-S	80	0	-		✓		4.00"(102)	12.29"(312)	3.25"(83)
RP480-80-0-W	80	0	-	✓			*	*	*
RP480-80-10-C	80	10	0.15			✓	*	*	*
RP480-80-10-S	80	10	0.15		✓		4.00"(102)	12.29"(312)	3.25"(83)
RP480-80-10-W	80	10	0.15	✓			*	*	*
RP480-80-100-C	80	100	1.50			✓	*	*	*
RP480-80-100-S	80	100	1.50		✓		4.00"(102)	12.29"(312)	3.25"(83)
RP480-80-100-W	80	100	1.50	✓			*	*	*
RP480-80-1000-C	80	1000	15.00			✓	*	*	*
RP480-80-1000-S	80	1000	15.00		✓		4.00"(102)	12.29"(312)	3.25"(83)
RP480-80-1000-W	80	1000	15.00	✓			*	*	*
RP480-80-2000-C	80	2000	20.00			✓	*	*	*
RP480-80-2000-S	80	2000	20.00		✓		4.00"(102)	12.29"(312)	3.25"(83)
RP480-80-2000-W	80	2000	20.00	✓			*	*	*
RP480-100-0-C	100	0	-			✓	*	*	*
RP480-100-0-S	100	0	-		✓		6.60"(168)	15.75"(400)	4.50"(114)
RP480-100-0-W	100	0	-	✓			*	*	*
RP480-100-10-C	100	10	0.15			✓	*	*	*
RP480-100-10-S	100	10	0.15		✓		6.60"(168)	15.75"(400)	4.50"(114)
RP480-100-10-W	100	10	0.15	✓			*	*	*
RP480-100-100-C	100	100	1.50			✓	*	*	*
RP480-100-100-S	100	100	1.50		✓		6.60"(168)	15.75"(400)	4.50"(114)
RP480-100-100-W	100	100	1.50	✓			*	*	*
RP480-100-1000-C	100	1000	15.00			✓	*	*	*
RP480-100-1000-S	100	1000	15.00		✓		6.60"(168)	15.75"(400)	4.50"(114)
RP480-100-1000-W	100	1000	15.00	✓			*	*	*
RP480-100-2000-C	100	2000	20.00			✓	*	*	*

ADDITIONAL MODEL NO. >>

RP480

3-PHASE WYE SINGLE STAGE POWER LINE FILTER, 600 V

MODEL NO.	RATED CURRENT, A @ 40° C	Y-CAP, nF	LEAKAGE CURRENT mA, @ 480V AC/60 Hz	TERMINAL OPTIONS			MAX. DIMENSIONS" (MM)		
				(W) INPUT/OUTPUT	(S) INPUT/OUTPUT	(C) INPUT/OUTPUT	WIDTH	(LENGTH)	HEIGHT
RP480-100-2000-S	100	2000	20.00		✓		6.60"(168)	15.75"(400)	4.50"(114)
RP480-100-2000-W	100	2000	20.00	✓			*	*	*
RP480-150-0-C	150	0	-			✓	*	*	*
RP480-150-0-S	150	0	-		✓		6.60"(168)	15.75"(400)	4.50"(114)
RP480-150-0-W	150	0	-	✓			*	*	*
RP480-150-10-C	150	10	0.15			✓	*	*	*
RP480-150-10-S	150	10	0.15		✓		6.60"(168)	15.75"(400)	4.50"(114)
RP480-150-10-W	150	10	0.15	✓			*	*	*
RP480-150-100-C	150	100	1.50			✓	*	*	*
RP480-150-100-S	150	100	1.50		✓		6.60"(168)	15.75"(400)	4.50"(114)
RP480-150-100-W	150	100	1.50	✓			*	*	*
RP480-150-1000-C	150	1000	15.00			✓	*	*	*
RP480-150-1000-S	150	1000	15.00		✓		6.60"(168)	15.75"(400)	4.50"(114)
RP480-150-1000-W	150	1000	15.00	✓			*	*	*
RP480-150-2000-C	150	2000	20.00			✓	*	*	*
RP480-150-2000-S	150	2000	20.00		✓		6.60"(168)	15.75"(400)	4.50"(114)
RP480-150-2000-W	150	2000	20.00	✓			*	*	*
RP480-200-0-C	200	0	-			✓	*	*	*
RP480-200-0-S	200	0	-		✓		6.60"(168)	15.75"(400)	4.50"(114)
RP480-200-0-W	200	0	-	✓			*	*	*
RP480-200-10-C	200	10	0.15			✓	*	*	*
RP480-200-10-S	200	10	0.15		✓		6.60"(168)	15.75"(400)	4.50"(114)
RP480-200-10-W	200	10	0.15	✓			*	*	*
RP480-200-100-C	200	100	1.50			✓	*	*	*
RP480-200-100-S	200	100	1.50		✓		6.60"(168)	15.75"(400)	4.50"(114)
RP480-200-100-W	200	100	1.50	✓			*	*	*
RP480-200-1000-C	200	1000	15.00			✓	*	*	*
RP480-200-1000-S	200	1000	15.00		✓		6.60"(168)	15.75"(400)	4.50"(114)
RP480-200-1000-W	200	1000	15.00	✓			*	*	*
RP480-200-2000-C	200	2000	2.00			✓	*	*	*
RP480-200-2000-S	200	2000	20.00		✓		6.60"(168)	15.75"(400)	4.50"(114)
RP480-200-2000-W	200	2000	20.00	✓			*	*	*
RP480-300-0-S	300	0	-		✓		7.00"(178)	21.49"(546)	5.00"(127)
RP480-300-10-S	300	10	0.15		✓		7.00"(178)	21.49"(546)	5.00"(127)

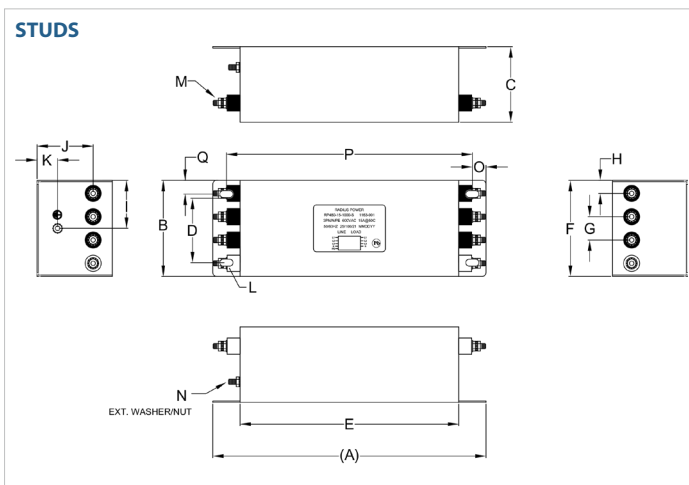
ADDITIONAL MODEL NO. >>

RP480

3-PHASE WYE SINGLE STAGE POWER LINE FILTER, 600 V

MODEL NO.	RATED CURRENT, A @ 40° C	Y-CAP, nF	LEAKAGE CURRENT mA, @ 480V AC/60 Hz	TERMINAL OPTIONS			MAX. DIMENSIONS" (MM)		
				(W) INPUT/OUTPUT	(S) INPUT/OUTPUT	(C) INPUT/OUTPUT	WIDTH	(LENGTH)	HEIGHT
RP480-300-100-S	300	100	1.50		✓		7.00"(178)	21.49"(546)	5.00"(127)
RP480-300-1000-S	300	1000	15.00		✓		7.00"(178)	21.49"(546)	5.00"(127)
RP480-300-2000-S	300	2000	20.00		✓		7.00"(178)	21.49"(546)	5.00"(127)

RP480 MECHANICAL OUTLINES (MM)



SERIES	(A)	B	C	D	E	F	G	H	I	J	K	L	M	N	O	P	Q
STUDS (15/30/50A)	10.00" (254)	3.50" (89)	2.75" (70)	2.35" (60)	8.00" (203)	3.50" (89)	0.85" (22)	0.48" (12)	1.75" (44)	2.05" (52)	0.75" (19)	Ø 0.48"x0.25", 4x (Ø 12.2x6.5, 4x)	STUD, M5, 8x	STUD, GND, M5	0.50" (13)	9.00" (229)	0.50" (13)
STUDS (80A)	12.29" (312)	4.00" (102)	3.25" (83)	3.00" (76)	10.00" (254)	4.00" (102)	0.90" (23)	0.62" (16)	2.00" (51)	2.25" (57)	1.00" (25)	Ø 0.25"x0.50", 4x (Ø 6.35x12.70, 4x)	M6 STUDS, 9x	N/A	0.50" (13)	11.00" (279)	0.50" (13)
STUDS (100/150/200A)	15.75" (400)	6.60" (168)	4.50" (114)	5.12" (130)	13.00" (330)	6.60" (168)	1.60" (41)	1.50" (38)	3.31" (84)	3.50" (89)	1.00" (25)	Ø 0.30"x0.60", 4x (Ø 7.62x15.24, 4x)	N/A	N/A	0.53" (14)	14.69" (373)	0.74" (19)
STUDS (300A)	21.49" (546)	7.00" (178)	5.00" (127)	6.00" (152)	18.00" (457)	7.00" (178)	1.60" (41)	1.10" (28)	3.50" (89)	4.00" (102)	1.00" (25)	Ø 0.30"x0.60", 4x (Ø 7.62x15.24, 4x)	STUD, M12, 9x	N/A	0.50" (13)	19.00" (483)	0.50" (13)

TYPICAL TOLERANCE: +/-0.02" (0.50MM)

RP480

3-PHASE **WYE** SINGLE STAGE POWER LINE FILTER, 600 V

TYPICAL INSERTION LOSS, dB (50/50 Ohm)

Amps	Freq (MHz)	0.15	0.5	1.0	10	30
15	CM (dB)	55	65	65	52	40
	DM (dB)	55	65	70	70	60
30	CM (dB)	55	65	65	52	40
	DM (dB)	55	65	70	70	60
50	CM (dB)	50	65	65	52	40
	DM (dB)	50	60	65	70	55
80	CM (dB)	45	55	55	50	40
	DM (dB)	50	55	60	50	30
100	CM (dB)	60	65	65	50	30
	DM (dB)	50	60	60	50	30
150	CM (dB)	55	60	60	50	30
	DM (dB)	45	55	60	50	30
200	CM (dB)	50	55	55	45	30
	DM (dB)	45	55	55	55	30
300	CM (dB)	50	55	55	42	30
	DM (dB)	45	50	50	40	30

X-ON Electronics

Largest Supplier of Electrical and Electronic Components

Click to view similar products for [Power Line Filters](#) category:

Click to view products by [Astrodyne](#) manufacturer:

Other Similar products are found below :

[6609019-3](#) [6609026-5](#) [6609030-6](#) [6609973-2](#) [D30A](#) [7-1609090-5](#) [F2810](#) [F4456A](#) [F7382Z](#) [F7863Z](#) [FAHAV3100ZC000](#) [806276](#) [FN2020B-1-06](#) [FN2080B-10-06](#) [FN2410H-32-33](#) [FN2410H-80-34](#) [FP144](#) [FS4153-20-06](#) [FS4353-500-99](#) [12-MMB-030-11-D](#) [DB4-393](#) [15811T200](#)
[20B1](#) [LC630](#) [2B1](#) [1609080-2](#) [1609993-8](#) [1-6609070-1](#) [F1100AA02](#) [F1150CC10](#) [F1500CA10](#) [F1500CA15](#) [F4041Z](#) [F7585E](#) [1B1](#)
[FN2070A-16-06](#) [FN2090A-20-06](#) [FN2090B-12-06](#) [FN2090Z-1-06](#) [FN2410H-25-33](#) [FN2410H-60-34](#) [FN2410H-8-44](#) [FN2412H-8-44](#)
[FN323B-6-01](#) [FN610R-3-06](#) [20EHQ7](#) [20EHZ7](#) [20K1](#) [30B6](#) [3K1](#)