

RPM7020

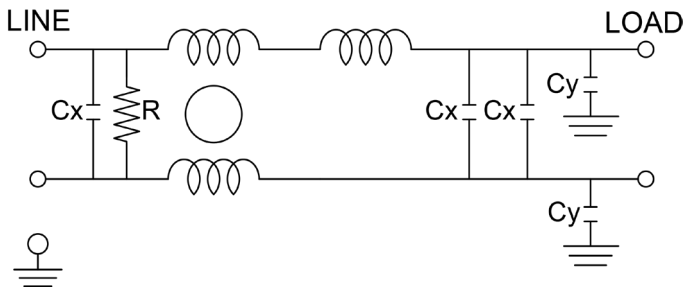
MIL/COTS COMPACT AC, SINGLE PHASE EMI POWER LINE FILTER

FEATURES

- » Rated currents include **5A, 10A, 15A, and 20A**
- » Dual Stage Line Filter
- » Available with **QD** (tabs) and **S** (studs) option
- » Agency Approved to RoHS
- » Y-cap value can be adjusted to fit specification



ELECTRICAL SCHEMATIC



SPECIFICATIONS

OPERATING FREQUENCY	50/60/400 Hz
MAX. OPERATING VOLTAGE	300 VAC +10%
AMBIENT TEMPERATURE	-40 TO 70°C
CLIMATIC CATEGORY	25/100/21
TERMINALS (-T)	QD: 0.25" TABS STUDS: 5-20A (M5)
TYP. WEIGHT, LBS (KG)	0.5 (0.2)

TYPICAL LEAKAGE CURRENT

@ 250 VAC 60 Hz 0 - 3.50 mA Max.

HIPOT RATINGS

LINE TO GROUND 1800 VDC

TYPICAL APPLICATIONS

- ✓ Mil-461/ DO-160

NOTE:

- ✓ Call for other termination types (e.g. Circular Mil-Connectors, etc.) Leakage current is determined by the line to ground capacitors in the filter. The capacitors can be easily varied to match the system leakage requirements.

HOW TO ORDER

RPM7020 - Y - Z

Z = TERMINAL (-T)
X = RATED CURRENT

RPM7020=FILTER SERIES

NOTE: USE ANY COMBINATION OF -X (AMPS) WITH ANY -Y RATINGS

E.G. **RPM7020-5-QD** (5AMPS)

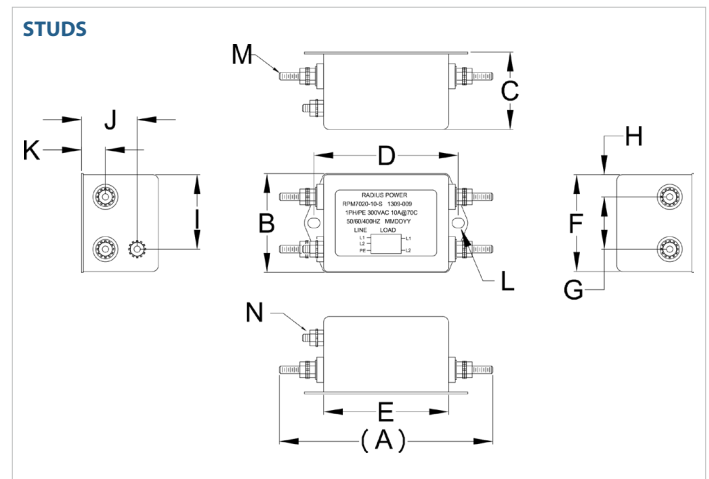
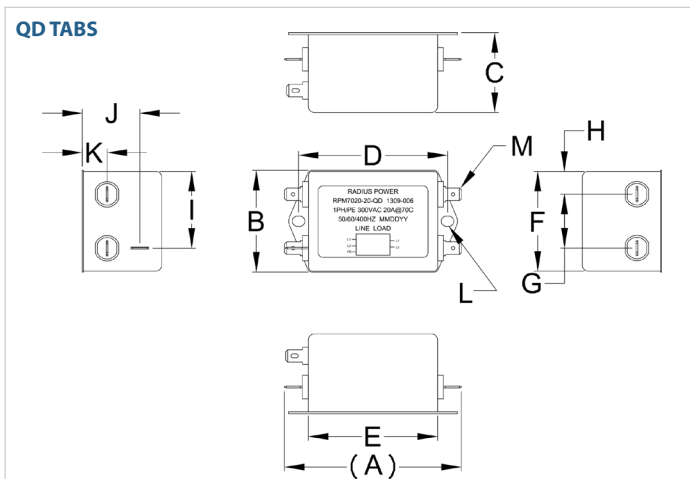
For **X** and **Y** options see product specification table.

RPM7020

MIL/COTS COMPACT AC, SINGLE PHASE EMI POWER LINE FILTER

MODEL NO.	RATED CURRENT, A @ 40° C	Y-CAP, nF	LEAKAGE CURRENT, mA @ 250V AC, 60 Hz	TERMINAL OPTIONS			MAX. DIMENSIONS" (MM)		
				(QD) INPUT/OUTPUT	(W) INPUT/OUTPUT	(S) INPUT/OUTPUT	WIDTH	(LENGTH)	HEIGHT
RPM7020-5-QD	5	22	3.50	✓			2.01"(51)	3.50"(89)	1.61"(41)
RPM7020-5-QD 10NF	5	10	3.50	✓			2.01"(51)	3.50"(89)	1.61"(41)
RPM7020-5-S	5	22	3.50			✓	2.01"(51)	4.29"(109)	1.61"(41)
RPM7020-5-S 10NF	5	10	3.50			✓	2.01"(51)	4.29"(109)	1.61"(41)
RPM7020-10-QD	10	22	3.50	✓			2.01"(51)	3.50"(89)	1.61"(41)
RPM7020-10-QD 10 NF	10	10	3.50	✓			2.01"(51)	3.50"(89)	1.61"(41)
RPM7020-10-S	10	22	3.50			✓	2.01"(51)	4.29"(109)	1.61"(41)
RPM7020-10-S 10NF	10	10	3.50			✓	2.01"(51)	4.29"(109)	1.61"(41)
RPM7020-15-QD	10	22	3.50	✓			2.01"(51)	3.50"(89)	1.61"(41)
RPM7020-15-QD 10 NF	10	10	3.50	✓			2.01"(51)	3.50"(89)	1.61"(41)
RPM7020-15-S	15	22	3.50			✓	2.01"(51)	4.29"(109)	1.61"(41)
RPM7020-15-S 10NF	15	10	3.50			✓	2.01"(51)	4.29"(109)	1.61"(41)
RPM7020-20-QD	20	22	3.50	✓			2.01"(51)	3.50"(89)	1.61"(41)
RPM7020-20-QD 10NF	20	10	3.50	✓			2.01"(51)	3.50"(89)	1.61"(41)
RPM7020-20-S	20	22	3.50			✓	2.01"(51)	4.29"(109)	1.61"(41)
RPM7020-20-S 10NF	20	10	3.50			✓	2.01"(51)	4.29"(109)	1.61"(41)

RPM7020 MECHANICAL OUTLINES (MM)



RPM7020

MIL/COTS COMPACT **AC**, SINGLE PHASE EMI POWER LINE FILTER

SERIES	(A)	B	C	D	E	F	G	H	I	J	K	L	M	N
QD TABS	3.50" (89)	2.01" (51)	1.61" (41)	2.95" (75)	2.56" (65)	2.01" (51)	1.06" (27)	0.45" (11)	1.52" (39)	1.14" (29)	0.49" (13)	Ø 0.25"X0.20", 2X (Ø, 6.4x5.1, 2x)	0.25", 5X (QD, MALE, 6.35, 5x)	N/A
STUDS	4.29" (109)	2.01" (51)	1.61" (41)	2.95" (75)	2.60" (66)	2.01" (51)	1.06" (27)	0.45" (12)	1.52" (39)	1.14" (29)	0.49" (13)	Ø 0.25"X0.20", 2X (Ø, 6.4x5.1, 2x)	STUD, M5, 4x	STUD, GND, M5

TYPICAL TOLERANCE: +/-0.02" (0.50MM)

TYPICAL INSERTION LOSS, dB (50/50 Ohm)

Amps	Freq (MHz)	Insertion Loss (dB)				
		0.15	0.5	1.0	10	30
5	CM (dB)	30	50	50	45	30
	DM (dB)	40	60	60	40	30
10	CM (dB)	30	50	50	45	30
	DM (dB)	40	60	60	40	30
15	CM (dB)	30	50	50	45	30
	DM (dB)	40	60	60	40	30
20	CM (dB)	30	50	50	45	30
	DM (dB)	40	60	60	40	30

X-ON Electronics

Largest Supplier of Electrical and Electronic Components

Click to view similar products for [Power Line Filters](#) category:

Click to view products by [Astrodyne](#) manufacturer:

Other Similar products are found below :

[6609019-3](#) [6609026-5](#) [6609030-6](#) [6609973-2](#) [D30A](#) [7-1609090-5](#) [F2810](#) [F4456A](#) [F7382Z](#) [F7863Z](#) [FAHAV3100ZC000](#) [806276](#) [FN2020B-1-06](#) [FN2080B-10-06](#) [FN2410H-32-33](#) [FN2410H-80-34](#) [FP144](#) [FS4153-20-06](#) [FS4353-500-99](#) [12-MMB-030-11-D](#) [DB4-393](#) [15811T200](#)
[20B1](#) [LC630](#) [2B1](#) [1609080-2](#) [1609993-8](#) [1-6609070-1](#) [F1100AA02](#) [F1150CC10](#) [F1500CA10](#) [F1500CA15](#) [F4041Z](#) [F7585E](#) [1B1](#)
[FN2070A-16-06](#) [FN2090A-20-06](#) [FN2090B-12-06](#) [FN2090Z-1-06](#) [FN2410H-25-33](#) [FN2410H-60-34](#) [FN2410H-8-44](#) [FN2412H-8-44](#)
[FN323B-6-01](#) [FN3258H-130-35](#) [FN610R-3-06](#) [20EHQ7](#) [20EHZ7](#) [20K1](#) [30B6](#)