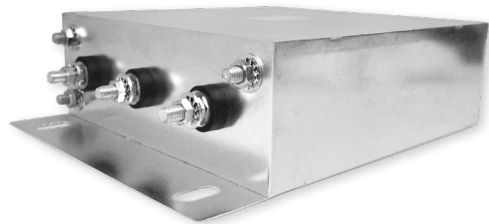


# RPMC5014

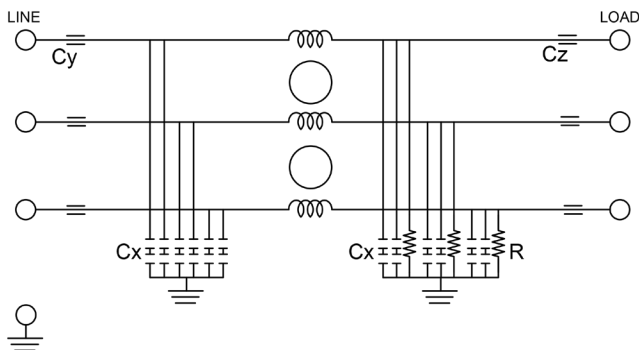
## MIL/COTS 3-PHASE **DELTA** EMI POWER LINE FILTER

### FEATURES

- » **Rated currents include 63A**
  - » Single Stage Line Filter
  - » Available with **S** (studs)
  - » Agency Approved to RoHS
- Y-cap value can be adjusted to fit specification



### ELECTRICAL SCHEMATIC



### SPECIFICATIONS

OPERATING FREQUENCY	50/60 Hz
MAX. OPERATING VOLTAGE*	480 VAC +10%
AMBIENT TEMPERATURE	-25 TO 50°C
CLIMATIC CATEGORY	25/100/21
TERMINALS (-T)	STUDS: 3/8-16
TYP. WEIGHT, LBS (KG)	16.0 (7.3)

### HIPOT RATINGS

LINE TO GROUND	2200 VDC
----------------	----------

### TYPICAL APPLICATIONS

- ✓ TEMPEST/Mil-461/DO-160

### NOTE:

- ✓ Call for other termination types (e.g. Circular Mil Connectors, etc.)

### HOW TO ORDER

RPMC5014 - Y - Z

Z = TERMINAL (-T)  
X = RATED CURRENT

RPMC5014=FILTER SERIES

**NOTE:** USE ANY COMBINATION OF -X (AMPS) WITH ANY -Y RATINGS

E.G. **RPMC5014-63** (63 AMPS)

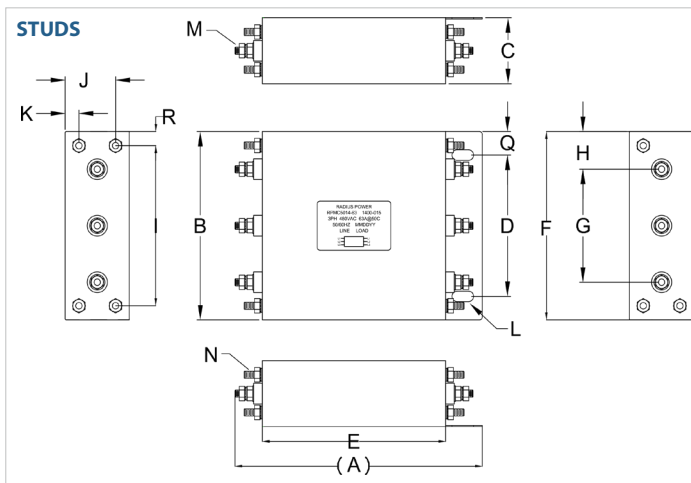
For **X** and **Y** options see product specification table.

# RPMC5014

## MIL/COTS 3-PHASE **DELTA** EMI POWER LINE FILTER

MODEL NO.	RATED CURRENT, A @ 40° C	TERMINAL OPTIONS			MAX. DIMENSIONS" (MM)		
		(QD)INPUT/OUTPUT	(W) INPUT/OUTPUT	(S) INPUT/OUTPUT	WIDTH	(LENGTH)	HEIGHT
RPMC5014-63	63			✓	10.02"	13.02"	3.52"

### RPMC5014 MECHANICAL OUTLINES (MM)



SERIES	(A)	B	C	D	E	F	G	H	I	J	K	L	M	N	O	P	Q	R
<b>STUDS</b>	13.46" (342)	10.00" (254)	3.50" (89)	7.50" (191)	10.00" (254)	10.00" (254)	6.00" (152)	2.00" (51)	8.50" (216)	2.75" (70)	0.75" (19)	Ø 1.18"x0.55", 2x (Ø 30.0x14.2, 2x)	STUD 3/8-16, 6x	INSERT 3/8-16, 7x	N/A	N/A	1.25" (32)	0.75" (19)

TYPICAL TOLERANCE: +/-0.02" (0.50MM)

### TYPICAL INSERTION LOSS, dB (50/50 Ohm)

Amps	Freq (MHz)	0.15	0.5	1.0	10	30
<b>63</b>	CM (dB)	80	80	95	100	100
	DM (dB)	-	-	-	-	-

## X-ON Electronics

Largest Supplier of Electrical and Electronic Components

*Click to view similar products for [Power Line Filters](#) category:*

*Click to view products by [Astrodyne](#) manufacturer:*

Other Similar products are found below :

[6609019-3](#) [6609026-5](#) [6609030-6](#) [6609973-2](#) [D30A](#) [7-1609090-5](#) [F2810](#) [F4456A](#) [F7382Z](#) [F7863Z](#) [FAHAV3100ZC000](#) [806276](#) [FN2020B-1-06](#) [FN2080B-10-06](#) [FN2410H-32-33](#) [FN2410H-80-34](#) [FP144](#) [FS4153-20-06](#) [FS4353-500-99](#) [12-MMB-030-11-D](#) [DB4-393](#) [15811T200](#) [20B1](#) [LC630](#) [2B1](#) [1609080-2](#) [1609993-8](#) [1-6609070-1](#) [F1100AA02](#) [F1150CC10](#) [F1500CA10](#) [F1500CA15](#) [F4041Z](#) [F7585E](#) [1B1](#) [FN2070A-16-06](#) [FN2090A-20-06](#) [FN2090B-12-06](#) [FN2090Z-1-06](#) [FN2410H-25-33](#) [FN2410H-60-34](#) [FN2410H-8-44](#) [FN2412H-8-44](#) [FN323B-6-01](#) [FN3258H-130-35](#) [FN610R-3-06](#) [20EHQ7](#) [20EHZ7](#) [20K1](#) [30B6](#)