

RPT5000

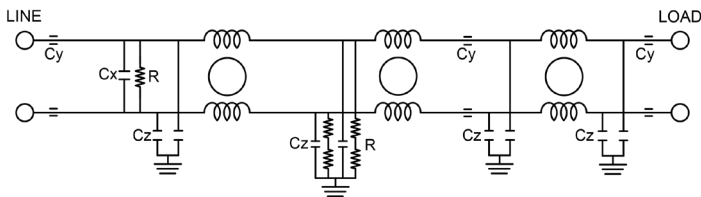
TEMPEST/COTS DC EMI POWER LINE FILTER

FEATURES

- » Rated currents include **2A, 10A, 15A, 25A and 35A**
- » Multi Stage Line Filter
- » Available with **S** (studs)
- » Agency Approved to RoHS
- » Y-cap value can be adjusted to fit specification



ELECTRICAL SCHEMATIC



SPECIFICATIONS

OPERATING FREQUENCY	DC
MAX. OPERATING VOLTAGE	400 VDC +10%
AMBIENT TEMPERATURE	-40 TO 70°C
CLIMATIC CATEGORY	25/100/21
TERMINALS (-T)	STUDS: 2-35A (M5)
TYP. WEIGHT, LBS (KG)	3.2-6(1.45-2.72)

HIPOT RATINGS

LINE TO GROUND	1500 VDC
----------------	----------

HOW TO ORDER

RPT5000 - Y - Z

Z = TERMINAL (-T)
X = RATED CURRENT

RPT5000=FILTER SERIES

NOTE: USE ANY COMBINATION OF -X (AMPS) WITH ANY -Y RATINGS

E.G. **RPT5000-5-S** (5 AMPS)

For **X** and **Y** options see product specification table.

TYPICAL APPLICATIONS

- ✓ TEMPEST/Mil-461/DO-160

NOTE:

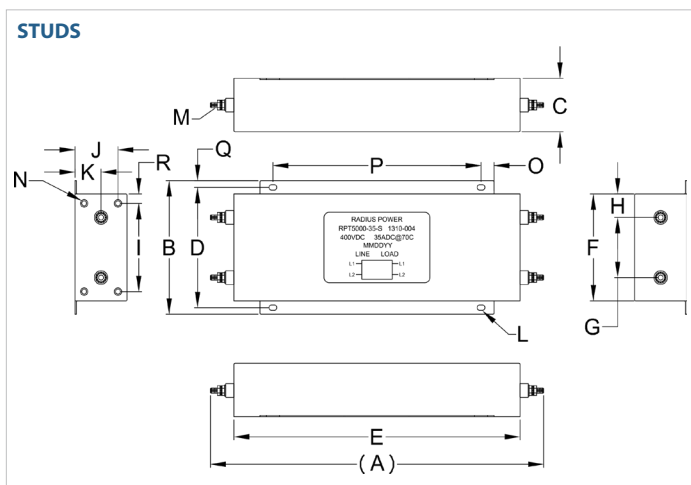
- ✓ Call for other termination types (e.g. Circular Mil Connectors, etc.)

RPT5000

TEMPEST/COTS DC EMI POWER LINE FILTER

MODEL NO.	RATED CURRENT, A @ 40° C	TERMINAL OPTIONS			MAX. DIMENSIONS" (MM)		
		(QD) INPUT/ OUTPUT	(W) INPUT/ OUTPUT	(S) INPUT/ OUTPUT	WIDTH	(LENGTH)	HEIGHT
RPT5000-5-S	5			✓	4.50"(114)	9.80"(249)	2.00"(51)
RPT5000-10-S	10			✓	4.50"(114)	9.80"(249)	2.00"(51)
RPT5000-15-S	15			✓	5.00"(127)	12.81"(325)	2.00"(51)
RPT5000-25-S	25			✓	5.00"(127)	12.81"(325)	2.00"(51)
RPT5000-35-S	35			✓	5.00"(127)	12.81"(325)	2.00"(51)

RPT5000 MECHANICAL OUTLINES (MM)



SERIES	(A)	B	C	D	E	F	G	H	I	J	K	L	M	N	O	P	Q	R
STUDS (5/10A)	9.80" (249)	4.50" (114)	2.00" (51)	4.00" (102)	8.00" (203)	3.50" (89)	1.75" (45)	0.87" (22)	2.80" (71)	1.65" (42)	0.35" (9)	Ø 0.50"x0.20", 4x (Ø 12.7x5.1, 4x)	STUD, M5, 4x	INSERT, 6-32, 4x	0.37" (9)	5.25" (133)	0.25" (6)	0.35" (9)
STUDS (15/25/35A)	12.81" (325)	5.00" (127)	2.00" (51)	4.50" (114)	11.00" (279)	40.00" (1016)	2.25" (57)	0.87" (22)	3.30" (84)	1.65" (42)	1.00" (25)	Ø 0.29"x0.20", 4x (Ø, 7.6x5.0, 4x)	STUD, M5, 4x	INSERT, 6-32, 4x	0.50" (13)	8.00" (203)	0.25" (6)	0.35" (9)

TYPICAL TOLERANCE: +/-0.02" (0.50MM)

RPT5000

TEMPEST/COTS **DC** EMI POWER LINE FILTER

TYPICAL INSERTION LOSS, dB (50/50 Ohm)

Amps	Freq (MHz)	0.15	0.5	1.0	10	30
2	CM (dB)	100	100	100	100	100
	DM (dB)	-	-	-	-	-
10	CM (dB)	100	100	100	100	100
	DM (dB)	-	-	-	-	-
15	CM (dB)	100	100	100	100	100
	DM (dB)	-	-	-	-	-
25	CM (dB)	100	100	100	100	100
	DM (dB)	-	-	-	-	-
35	CM (dB)	100	100	100	100	100
	DM (dB)	-	-	-	-	-

X-ON Electronics

Largest Supplier of Electrical and Electronic Components

Click to view similar products for [Power Line Filters](#) category:

Click to view products by [Astrodyne](#) manufacturer:

Other Similar products are found below :

[6609019-3](#) [6609026-5](#) [6609030-6](#) [6609973-2](#) [D30A](#) [7-1609090-5](#) [F2810](#) [F4456A](#) [F7382Z](#) [F7863Z](#) [FAHAV3100ZC000](#) [806276](#) [FN2020B-1-06](#) [FN2080B-10-06](#) [FN2410H-32-33](#) [FN2410H-80-34](#) [FP144](#) [FS4153-20-06](#) [FS4353-500-99](#) [12-MMB-030-11-D](#) [DB4-393](#) [15811T200](#)
[20B1](#) [LC630](#) [2B1](#) [1609080-2](#) [1609993-8](#) [1-6609070-1](#) [F1100AA02](#) [F1150CC10](#) [F1500CA10](#) [F1500CA15](#) [F4041Z](#) [F7585E](#) [1B1](#)
[FN2070A-16-06](#) [FN2090A-20-06](#) [FN2090B-12-06](#) [FN2090Z-1-06](#) [FN2410H-25-33](#) [FN2410H-60-34](#) [FN2410H-8-44](#) [FN2412H-8-44](#)
[FN323B-6-01](#) [FN610R-3-06](#) [20EHQ7](#) [20EHZ7](#) [20K1](#) [30B6](#) [3K1](#)