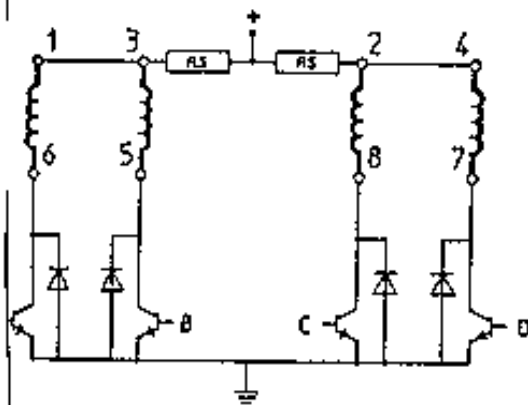


Specifications		
— step angle		1,3°
— step angle accuracy	%	5
— rated phase current	A	1,7
— phase resistance	Ω	1,8
— phase inductance	mH	5,0
— holding torque	Ncm	120
— detent torque	Ncm	10
— rotor inertia	gr cm <sup>2</sup>	640
— mass	Kg	1,35
— insulation class		B

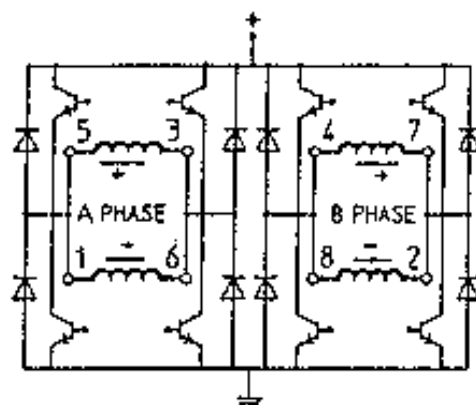
## Connection diagram

### UNIPOLAR

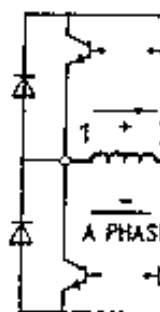


- 1=WHITE/BLACK      5=ORANGE
- 2=WHITE/RED        6=BLACK
- 3=WHITE/ORANGE    7=YELLOW
- 4=WHITE/YELLOW    8=RED

### BIPOLAR



- 1=WHITE/BLACK      5=ORANGE
- 2=WHITE/RED        6=BLACK
- 3=WHITE/ORANGE    7=YELLOW
- 4=WHITE/YELLOW    8=RED



- 1=BLACK
- 2=YELLOW

## Drive sequence

### UNIPOLAR

#### HALF-STEP

STEP	PHASES			
	A	B	C	D
1	+	0	0	+
2	+	0	0	0
3	-	0	+	0
4	0	0	-	0
5	0	-	+	0
6	0	+	0	0
7	0	-	0	+
8	0	0	0	+
1	+	0	0	+

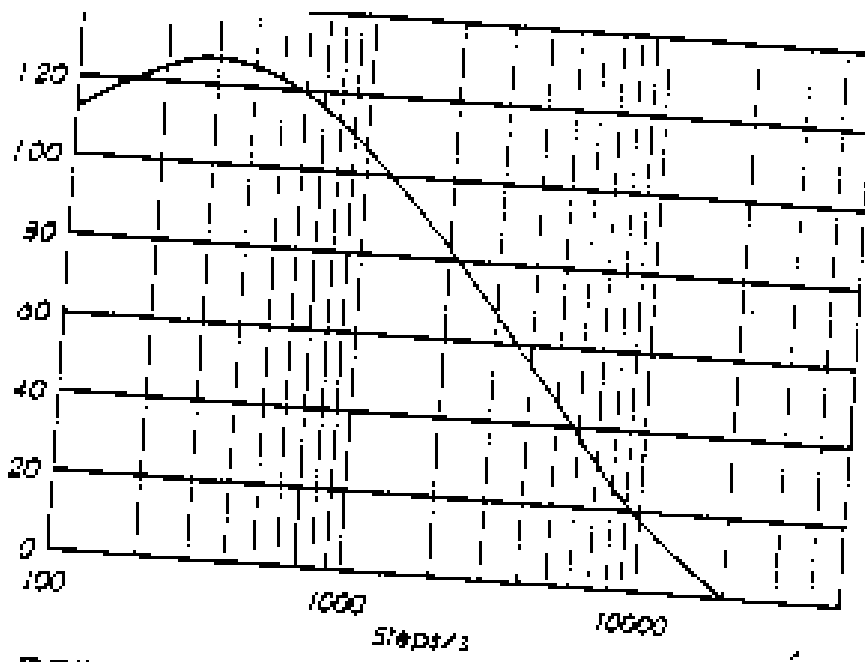
#### FULL-STEP

STEP	PHASES			
	A	B	C	D
1	+	0	0	+
2	+	0	+	0
3	0	+	+	0
4	0	+	0	+
1	+	0	0	+

### BIPOLAR

#### HALF-STEP

STEP	PHASES	
	A	B
1	+	+
2	0	+
3	-	+
4	-	0
5	-	-
6	0	-
7	+	-
8	+	0
1	+	+



DRIVE: BIPOLAR CHOPPER 65V - 2.4A/PH

## **X-ON Electronics**

Largest Supplier of Electrical and Electronic Components

*Click to view similar products for [astrosyn](#) manufacturer:*

Other Similar products are found below :

[MY7001](#) [MY3002](#) [MY4001](#)