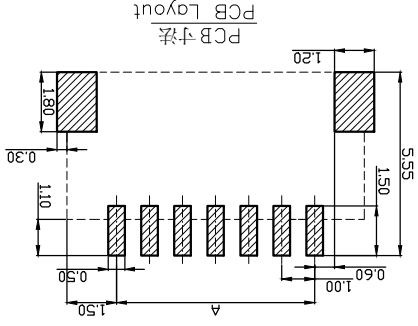
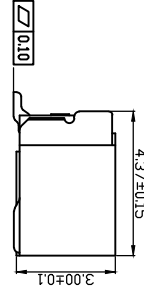
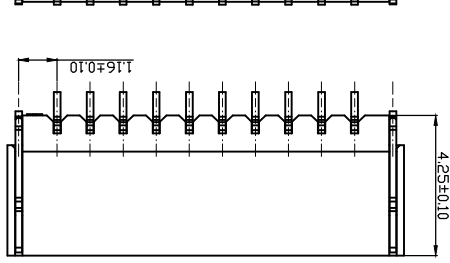
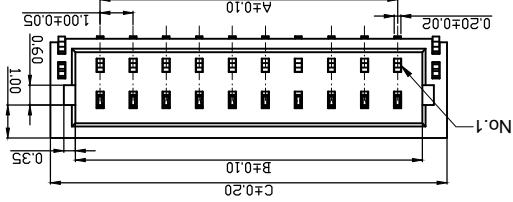
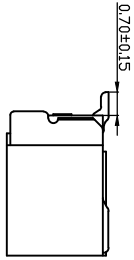
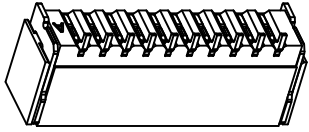


1.00mm PITCH WIRE TO BOARD CONNECTOR



SPECIFICATION

- 1. Material: Thermoplastic, UL94V-0,color:Natural
 - Housing: Voltage rating: 50V(max).
 - Contacts: Copper Alloy.
 - Contacts: Tin/Gold plated over nickel plated
 - Solder tab: Copper Alloy.
 - Th/Gold plated over nickel plated
2. Electrical Characteristics:
- Operating Temperature: -25°C~+85°C.
 - Current rating : 0.5A(max).
 - Insulation resistance: 800M ohms min. at 500VDC
 - Dielectric withstanding voltage: 500 VAC/1minute.
 - Contact resistance: 30m ohms max.



GENERAL TOLERANCE	SELECT	✓
DN.	TOL	1 2 3
X.XXX	±0.10	±0.05 ±0.15
X.XX	±0.15	±0.13 ±0.25
X.X	±0.20	±0.25 ±0.5
X	±0.30	±0.38 ±1.00
ANGLE ±2°		

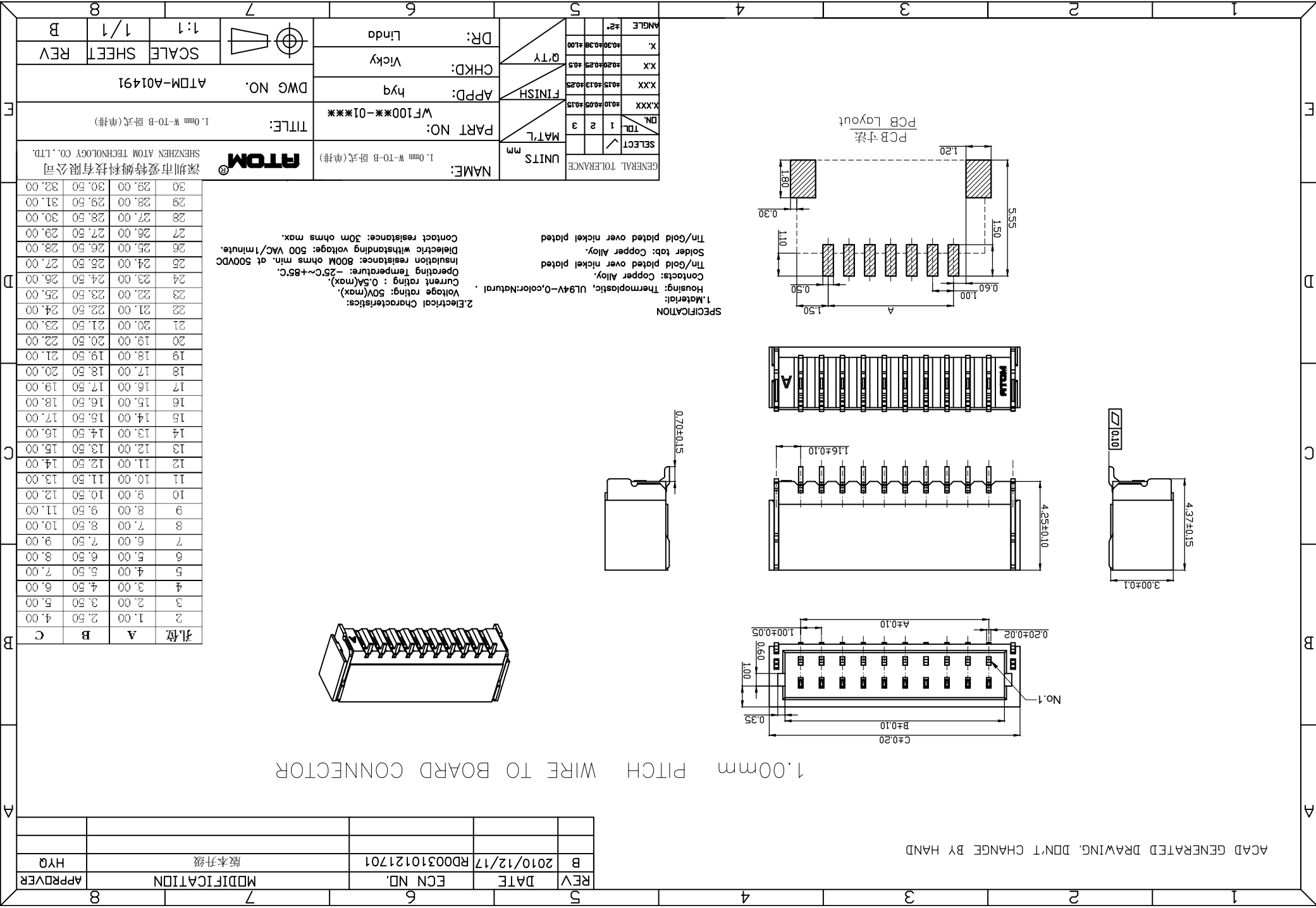
UNITS	MAT'L	1 2 3
FINISH		
Q'TY		

NAME:	1.00mm W-T0-B 卧式(单排)
PART NO.:	W/F100*-01***
TITLE:	1.00mm W-T0-B 卧式(单排)
DWG NO.:	ATOM-A01491
CHKD:	Vicky
DR:	Linda



SHENZHEN ATOM TECHNOLOGY CO., LTD.	深圳市爱特姆科技有限公司
ATOM®	

孔位	A	B	C
2	1.00	2.50	4.00
3	2.00	3.50	5.00
4	3.00	4.50	6.00
5	4.00	5.50	7.00
6	5.00	6.50	8.00
7	6.00	7.50	9.00
8	7.00	8.50	10.00
9	8.00	9.50	11.00
10	9.00	10.50	12.00
11	10.00	11.50	13.00
12	11.00	12.50	14.00
13	12.00	13.50	15.00
14	13.00	14.50	16.00
15	14.00	15.50	17.00
16	15.00	16.50	18.00
17	16.00	17.50	19.00
18	17.00	18.50	20.00
19	18.00	19.50	21.00
20	19.00	20.50	22.00
21	20.00	21.50	23.00
22	21.00	22.50	24.00
23	22.00	23.50	25.00
24	23.00	24.50	26.00
25	24.00	25.50	27.00
26	25.00	26.50	28.00
27	26.00	27.50	29.00
28	27.00	28.50	30.00
29	28.00	29.50	31.00
30	29.00	30.50	32.00



X-ON Electronics

Largest Supplier of Electrical and Electronic Components

Click to view similar products for [Headers & Wire Housings](#) category:

Click to view products by [ATOM](#) manufacturer:

Other Similar products are found below :

[95000-104TRLF](#) [10135584-644402LF](#) [DF62W-EP2022PCA](#) [95000-106TRLF](#) [DF62W-2022SCA](#) [DF62W-EP2022PC](#) [2203348](#) [DF62W-2022SC](#) [1084018](#) [1029039](#) [1084017](#) [802-10-012-10-002000](#) [1112640](#) [1112639](#) [891-007-9SS-BST1T](#) [000-34000](#) [0008550134](#) [0009482033](#) [0009507031](#) [57102-F02-18ULF](#) [57102-S06-03LF](#) [57202-S52-04LF](#) [PCN6-15S-2.5E](#) [0039019024](#) [58102-G61-06LF](#) [582553-1](#) [0009485154](#) [0009508121](#) [0022285053](#) [0050291907](#) [018731A](#) [LY20-4P-DT1-P1E-BR](#) [02.125.8002.8](#) [60101931](#) [60598-1 \(Cut Strip\)](#) [M1625-3R/100](#) [61062-3](#) [61082-181009](#) [CSU011177004](#) [636-1427](#) [638009-1](#) [641938-9](#) [641991-4](#) [644168-1](#) [644827-2](#) [647662-1](#) [65039-019ELF](#) [65692-001LF](#) [65781-018](#) [65781-047](#)