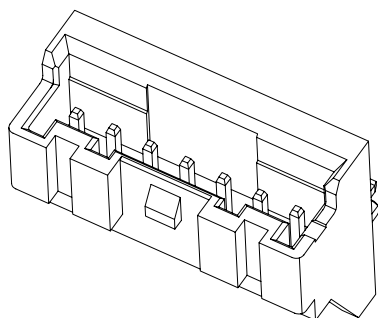
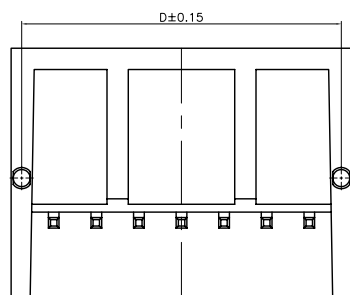
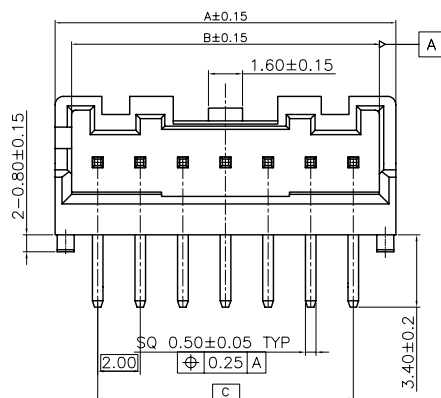
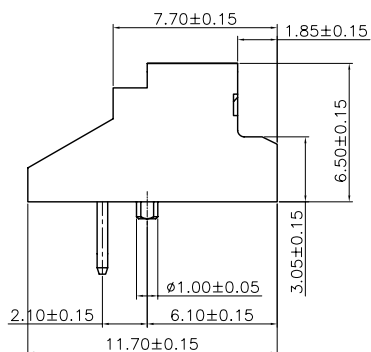
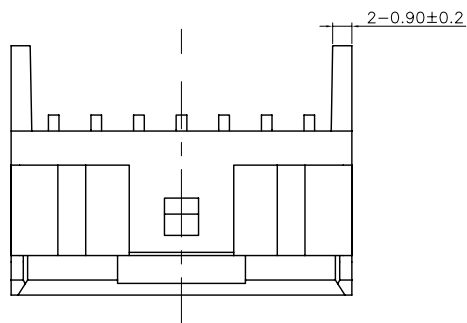


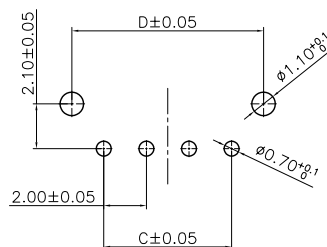
REV.	DATE	ECN NO.	MODIFICATION	APPROVER
A	2017.04.15	/	初版发行	JASON
		/		



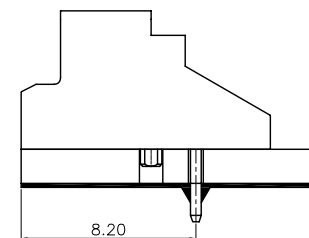
规格:

Specifications:

- 额定电流: 3A AC/DC (使用AWG#22时)  
Current rating: 3A AC/DC (AWG#22)
- 额定电压: 250V AC/DC  
Voltage rating: 250V AV/DC
- 使用温度范围: -25℃~+85℃ (含通电时温度上升)  
Temperature range: -25℃~+85℃ (including temperature rise in applying electrical current)
- 接触电阻: 初期 / 10 mΩ 以下  
环境试验后/ 20 mΩ 以下  
Contact resistance: Initial value/10mΩ max  
After environmental tests/20 mΩ max
- 绝缘电阻: 初期/1000MΩ 以上  
Insulation resistance: 1000 MΩ min
- 耐电压: AC 800V/1分钟  
Withstanding voltage: 800VAC/minute
- 适用电线范围: AWG#28~#22  
Applicable wire: AWG#28 to #22
- 适合的印刷电路板厚度: 1.6mm  
Applicable PC board thickness: 1.6mm
- 主体材料: Thermoplastic, UL94-V0, 天然色 (白色)  
Housing material: Thermoplastic, UL94-V0, natural (White)
- 端子材料: 黄铜, 镀锡  
Terminal material: brass, plating Tin

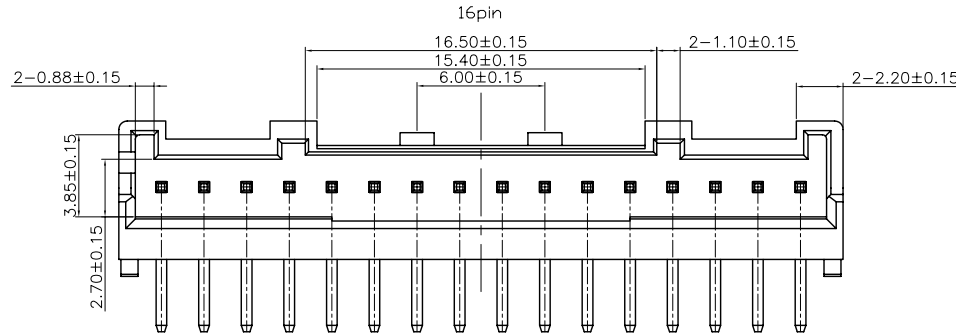
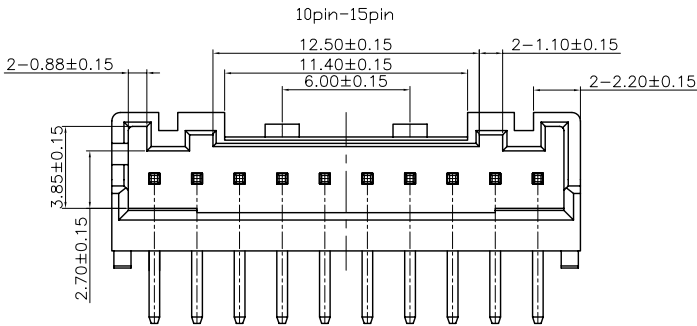
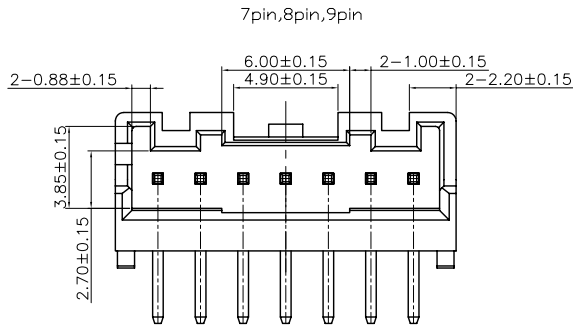
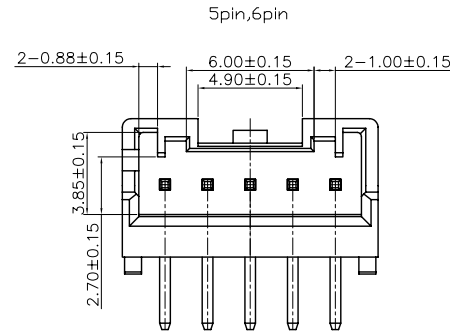
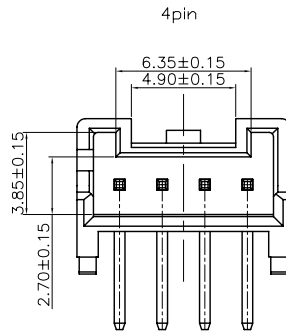
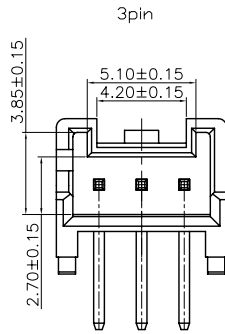
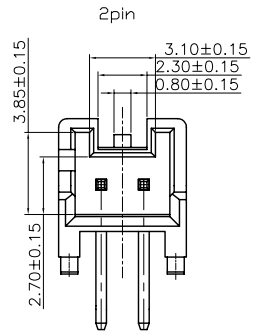


PCB LAYOUT



GENERAL TOLERANCE				UNITS	NAME (INTENDED USE)	
SELECT	✓			mm	WAFER 2.0 DIP 90° H6.5	
ON.	1	2	3	MAT'L	ATOM® 深圳市爱特姆科技有限公司 SHENZHEN ATOM TECHNOLOGY CO., LTD.	
X.XXX	±0.15	±0.05	±0.15	FINISH	PART NO. (INTENDED USE)	
X.XX	±0.25	±0.13	±0.25		WF200**-06***	
X.X	±0.30	±0.25	±0.50		APPD:	
X.	±0.38	±0.38	±1.00		CHKD:	
ANGLE	±5°			Q'TY	DR: DAVID	
					DWG NO.: ATOM-A03491	
					SCALE: 1:1	
					SHEET: 1/2	
					REV: A0	

REV.	DATE	ECN NO.	MODIFICATION	APPROVER
A	2017.04.15	/	初版发行	JASON
		/		



极数	尺寸				ATOM料号
	A	B	C	D	
2	6.00	4.45	2.00	5.00	WF20002-06401
3	8.00	6.45	4.00	7.00	WF20003-*****
4	10.00	8.45	6.00	9.00	WF20004-10402
5	12.00	10.45	8.00	11.00	WF20005-*****
6	14.00	12.45	10.00	13.00	WF20006-06402
7	16.00	14.45	12.00	15.00	WF20007-06402
8	18.00	16.45	14.00	17.00	WF20008-06402
9	20.00	18.45	16.00	19.00	WF20009-*****
10	22.00	20.45	18.00	21.00	WF20010-*****
11	24.00	22.45	20.00	23.00	WF20011-*****
12	26.00	24.45	22.00	25.00	WF20012-*****
13	28.00	26.45	24.00	27.00	WF20013-*****
14	30.00	28.45	26.00	29.00	WF20014-*****
15	32.00	30.45	28.00	31.00	WF20015-*****
16	34.00	32.45	30.00	33.00	WF20016-*****

GENERAL TOLERANCE	UNITS mm			NAME(INTENDED USE)	深圳市爱特姆科技有限公司 SHENZHEN ATOM TECHNOLOGY CO., LTD.
SELECT ✓	MAT'L			WAFER 2.0 DIP 90° H6.5	
TOL ON.	1	2	3	PART NO.(INTENDED USE)	TITLE:
X.XXX	±0.15	±0.05	±0.15	WF200**-06***	Wafer2.0mm XP DIP 90° 带定位柱 无K脚
X.XX	±0.25	±0.13	±0.25	APPD:	DWG NO.:
X.X	±0.30	±0.25	±0.50	CHKD:	ATOM-A03491
X.	±0.38	±0.38	±1.00	DR: DAVID	SCALE
ANGLE	±5°	FINISH		SHEET	
		Q'TY		REV.	
				1:1	2/2
					A0

## X-ON Electronics

Largest Supplier of Electrical and Electronic Components

*Click to view similar products for [Headers & Wire Housings](#) category:*

*Click to view products by [ATOM](#) manufacturer:*

Other Similar products are found below :

[95000-104TRLF](#) [10135584-644402LF](#) [DF62W-EP2022PCA](#) [95000-106TRLF](#) [DF62W-2022SCA](#) [DF62W-EP2022PC](#) [2203348](#) [DF62W-2022SC](#) [1084018](#) [1029039](#) [1084017](#) [802-10-012-10-002000](#) [1112640](#) [1112639](#) [891-007-9SS-BST1T](#) [000-34000](#) [0008550134](#) [0009482033](#) [0009507031](#) [57102-F02-18ULF](#) [57102-S06-03LF](#) [57202-S52-04LF](#) [PCN6-15S-2.5E](#) [0039019024](#) [58102-G61-06LF](#) [582553-1](#) [0009485154](#) [0009508121](#) [0022285053](#) [0050291907](#) [018731A](#) [LY20-4P-DT1-P1E-BR](#) [02.125.8002.8](#) [60101931](#) [60598-1 \(Cut Strip\)](#) [M1625-3R/100](#) [61062-3](#) [61082-181009](#) [CSU011177004](#) [636-1427](#) [638009-1](#) [641938-9](#) [641991-4](#) [644168-1](#) [644827-2](#) [647662-1](#) [65039-019ELF](#) [65692-001LF](#) [65781-018](#) [65781-047](#)