

REV.	DESCRIPTION	DRAWN	DATE
1	INITIAL RELEASE	PROS	2015/04/23
2	REVISED BY ECN E160121001	PROS	2016/01/28
3	REVISED BY ECR 1900008	PROS	2019/05/22

SPECIFICATION:

1. ELECTRICAL
 - 1.1 Current Rating: 5A MAX.
 - 1.2 Voltage Rating: 20V AC/DC
 - 1.3 Contact Resistance: 40mΩ
 - 1.4 Insulation Resistance: 100MΩ
 - 1.5 Dielectric Withstanding Voltage: 100VAC
2. MECHANICAL
 - 2.1 Durability: 10,000 Cycle
 - 2.2 Insertion Force: 5N to 20N
 - 2.3 Extraction Force: 8N to 20N
3. ENVIRONMENTAL
 - 3.1 Operating temperature range: -40°C~+105°C
4. SOLDER ABILITY
 - 4.1 Recommended IR Reflow (Wave Soldering) Temperature: 260°C

3	SHELL	STAINLESS STEEL, 50 TO 100μ" NICKEL PLATING
2	CONTACT	COPPER ALLOY, CONTACT AREA: 30μ" Pd-Ni + 2μ" Au.
		SOLDER TAILS: 100μ" TO 200μ" TIN PLATING
1	INSULATOR	HIGH TEMPERATURE THERMOPLASTIC

UNITS:		UNLESS OTHERWISE SPECIFIED TOLERANCE	
DECIMAL	LINEAR	ANGLES	
X	±0.50	±5°	
X.X	±0.25	±3°	
X.XX	±0.12	±1°	

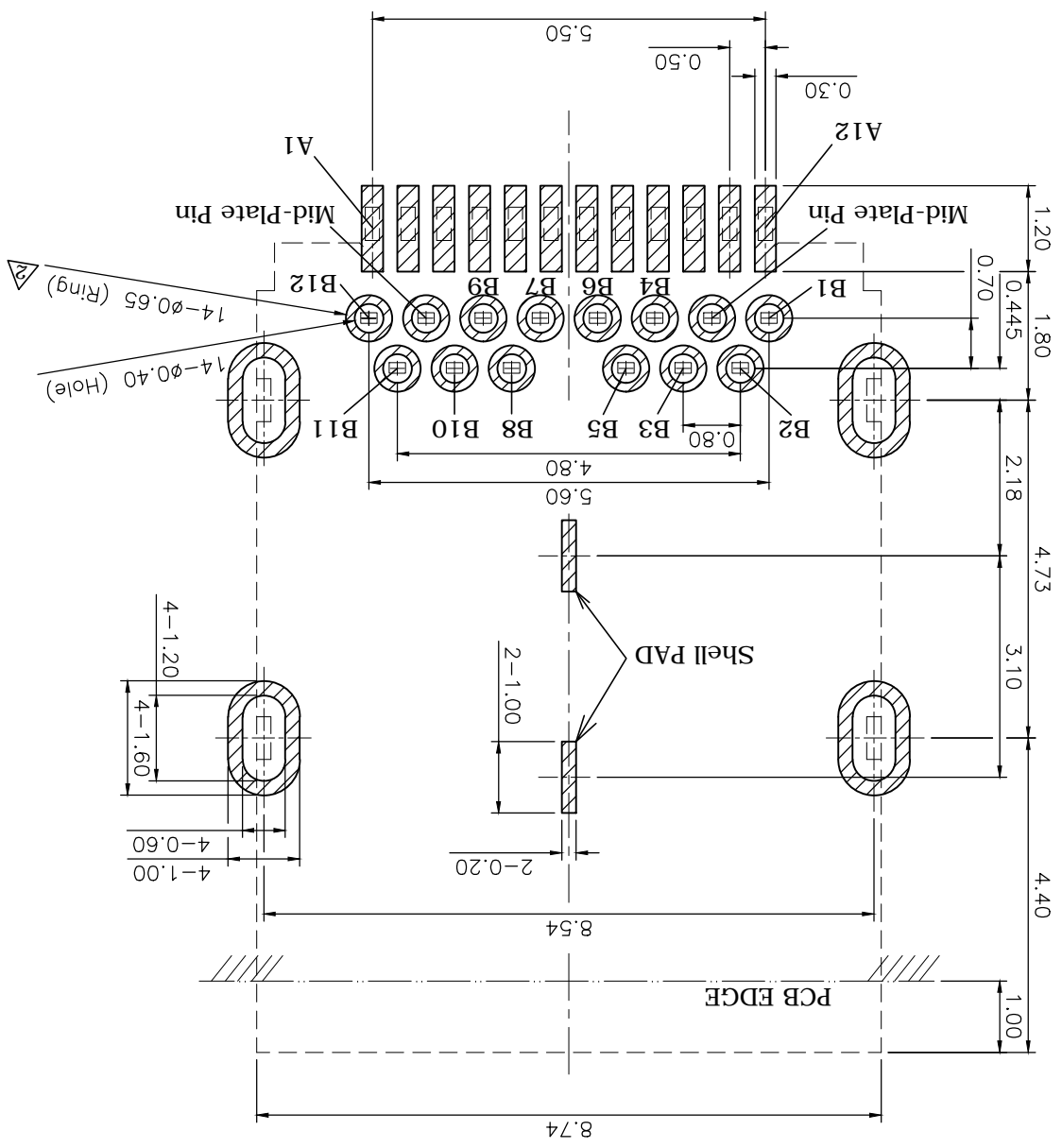
DRAWN NAME:	Fros	2015/04/23	2015/04/23	2015/04/23	2015/04/23
CHECKED	Zola	2015/04/23	2015/04/23	2015/04/23	2015/04/23
APPROVED	Albert	2015/04/23	2015/04/23	2015/04/23	2015/04/23
SCALE	5/1	SHEET	1/2	SIZE	A4
FILE NAME	217B-AG01_B_3				
PRODUCT NO.	217B-AG01				

DRAWN NAME:	WWW.ATTEND.COM.TW				
RIGHT-ANGLE, 2u" Au (30u" Pb-Ni)	USB 3.1 C type Hybrid Receptacle,				

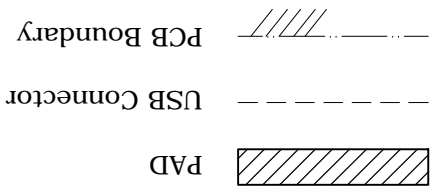


ATTEND

RECOMMEND LAYOUT (TOP VIEW)
GENERAL TOLERANCE: ±0.05



PIN ASSIGNMENTS:



PIN NUMBER	SIGNAL NAME	PIN NUMBER	SIGNAL NAME
A1	GND	B12	GND
A2	SSTxp1	B11	SSTxp1
A3	SSTXn1	B10	SSTXn1
A4	VBUS	B9	VBUS
A5	CC1	B8	SBU2
A6	Dp1	B7	Dn2
A7	Dn1	B6	Dp2
A8	SBU1	B5	CC2
A9	VBUS	B4	VBUS
A10	SSRXn2	B3	SSTXn2
A11	SSRXp2	B2	SSTxp2
A12	GND	B1	GND

UNLESS OTHERWISE SPECIFIED TOLERANCE	
UNIT:	mm
DECIMAL	X
LINEAR	±0.50
ANGLES	±5°
X.XX	±0.25
X.XXX	±0.12
±1°	

SCALE	SHEET	SIZE	FILE NAME
10/1	2/2	A4	217B-AG01_B_3

APPROVED	CHECKED	DRAWN	DATE
Albert	Zola	Fros	2015/04/23

PRODUCT NO.	PRODUCT NAME
217B-AG01	USB 3.1 C Type Hybrid Receptacle, Right-Angle, 2u" Au (30u" Pb-Ni)

DRAWN NAME: Fros
DATE: 2015/04/23
WWW.ATTEND.COM.TW

REV.	DESCRIPTION	DRAWN	DATE

SEE SHEET ONE

X-ON Electronics

Largest Supplier of Electrical and Electronic Components

Click to view similar products for [USB Cables / IEEE 1394 Cables category](#):

Click to view products by [Attend manufacturer](#):

Other Similar products are found below :

[68768-0173](#) [FNY-W6003-01](#) [88764-0800](#) [13805532](#) [148700-1](#) [17-200621](#) [17-250051P](#) [954](#) [AC102012-2](#) [IP-USB1\(C10\)S-RW](#)
[CABLE/RTP/USB/DT](#) [0847290003](#) [10115240-12200LF](#) [RS232-GTD](#) [USBFTVX2SA2N03A](#) [USBFTV2SA2N03A](#) [1689404-1](#) [FTP-](#)
[629Y401](#) [FTP-628Y402](#) [943301-001](#) [FNY-W6022](#) [FNY-W6003-03](#) [1310-1015-05](#) [1310-1018-04](#) [1310-1019-04](#) [0887283402](#) [UA-](#)
[30AMFM-SL7B02](#) [UA-30AMFM-SL7B01](#) [UA-30AFM-LD7B03](#) [UA-30AMFM-SL7B03](#) [USBAPSCC7202A](#) [UES-1001A160](#) [UES-](#)
[1003A160](#) [USBFTVX7SA2N20A](#) [USBFTVX2SA2N20A](#) [USBFTV2PEMSA2N10A](#) [FTP-629Y602](#) [USBCAMCM100](#) [USB A/F*2 to 2.54](#)
[2*5P-SH L=400mm](#) [EP-CBUSB10P2FLT](#) [1310-1033-01](#) [1310-1037-04](#) [ASR-USB](#) [68784-0075](#) [17-241361](#) [17-230471](#) [217B-BC02](#) [USB-29](#)
[19800-010500-200-RS](#) [USB+MINI DIN 6P WITH BKT](#)