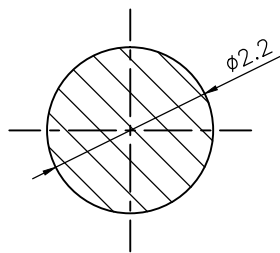
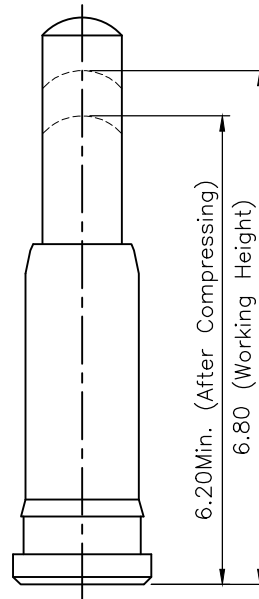
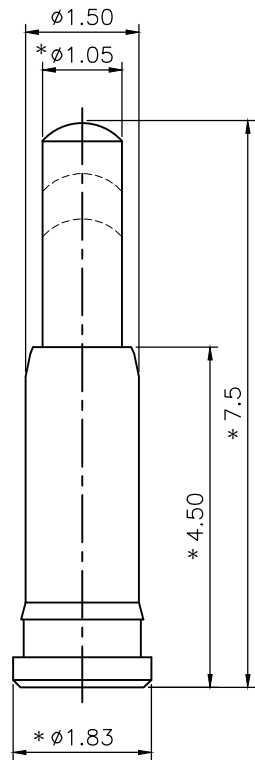


REV.	DESCRIPTION	DRAWN	DATE
1	INITIAL RELEASE	TIM	2020/05/05



Recommended Layout
General Tolerance: $\pm 0.05\text{mm}$

Notes:

1. ELECTRICAL
 - 1.1 Current Rating: 2A
 - 1.2 Voltage Rating: 30V
 - 1.3 Contact Resistance: 50m Ω Max.
2. MECHANICAL
 - * 2.1 Spring Force: 0.85N \pm 0.2N at working height
 - 2.2 Durability: 10,000 cycles
3. ENVIRONMENTAL
 - 3.1 Operating temperature range: -40 $^{\circ}\text{C}$ ~+85 $^{\circ}\text{C}$
 - 3.2 Storage temperature range: -40 $^{\circ}\text{C}$ ~+85 $^{\circ}\text{C}$
4. SOLDER ABILITY
 - 4.1 Recommended IR-Reflow Temperature: 260 $^{\circ}\text{C}$

3	SPRING	Stainless steel		
2	BARREL	Brass, gold plating under nickel over all		
1	PISTON	Brass, 10u" min. selective gold plating on contact area, gold plating under nickel over all		
NO.	PART NAME	DESCRIPTION		
UNLESS OTHERWISE SPECIFIED TOLERANCE				
UNIT:	DECIMAL	LINEAR	ANGLES	
mm	X.	± 0.50	$\pm 5^{\circ}$	
	X.X	± 0.25	$\pm 3^{\circ}$	
	X.XX	± 0.12	$\pm 1^{\circ}$	
		www.attend.com.tw		
DRAWN	Tim	2020/05/05	DRAWN NAME:	
CHECKED	Fros	2020/05/05	POGO Pin, Single pin H= 7.50mm, 10u"	
APPROVED	Ken	2020/05/05	PRODUCT NO. 303A-753018-000	
	SCALE 10/1	SHEET 1/1	SIZE A4	FILE NAME 303A-753018-000_B_1



X-ON Electronics

Largest Supplier of Electrical and Electronic Components

Click to view similar products for [Unspecified Connectors](#) category:

Click to view products by [Attend manufacturer](#):

Other Similar products are found below :

[1-21107-1](#) [RAD-OUT-8D-REL](#) [1409899](#) [1-1589688-1](#) [770690-4](#) [QUINT-PS/1AC/48DC/10](#) [1200110](#) [1200113](#) [LTWBD-06PMMP-LC7001](#)
[RC-5AS2000](#) [RAD-900-CONF-RF1](#) [RAD-CON-SMA-N-SS](#) [RAD-PIG-EF316-N-RSMA](#) [RAD-ISM-2400-ANT-VAN-3-0-R](#) [RIF-0-RPT-](#)
[12DC/21](#) [RIF-1-BPT/2X21](#) [RIF-RH-1](#) [2000 3/8](#) [3040 17-1/2](#) [GOL BLUE 25](#) [800307](#) [5043994](#) [5736861](#) [1714624](#) [5772605](#) [1016808](#)
[41.032.4053.1](#) [RM12BPE-3PH\(76\)](#) [RM12BPE-6PH\(76\)](#) [44429310](#) [RM15TPD-10P\(76\)](#) [0250 02](#) [0250 03](#) [0250 04](#) [0250 05](#) [0250 06](#) [0250 07](#)
[0250 08](#) [0251 02](#) [0251 04](#) [0251 05](#) [0251 07](#) [0251 08](#) [0251 09](#) [0252 02](#) [0252 03](#) [0252 04](#) [0252 05](#) [0252 07](#) [0252 09](#)