

Decoder LoRa™

4 Dry Contact Output

DEC-8LR-4

P.N. 650201454G

DESCRIZIONE

DEC-8LR-4 è un dispositivo che integra un ricetrasmittitore operante a 868.3 MHz con modulazione LoRa™ in grado di garantire comunicazioni a lunghissima distanza, elevata immunità alle interferenze, elevata sensibilità e ridotti consumi energetici.

Complementare alle schede encoder Aurel, ENC-8LR e al telecomando XTR-8LR-4ZN, permette di memorizzare fino a 48 encoder Aurel e attivare carichi fino a 5A in modalità monostabile e bistabile.

E' ideale per applicazioni di controllo a lunghissima distanza (8 Km a vista) quali impianti di irrigazione, allarmi, etc.

Le connessioni di alimentazione e ingresso di controllo del canale radio, sono accessibili mediante una morsettieria passo 5 mm.

Compatibile con ENC-8LR e XTR-8LR-4ZN

DESCRIPTION

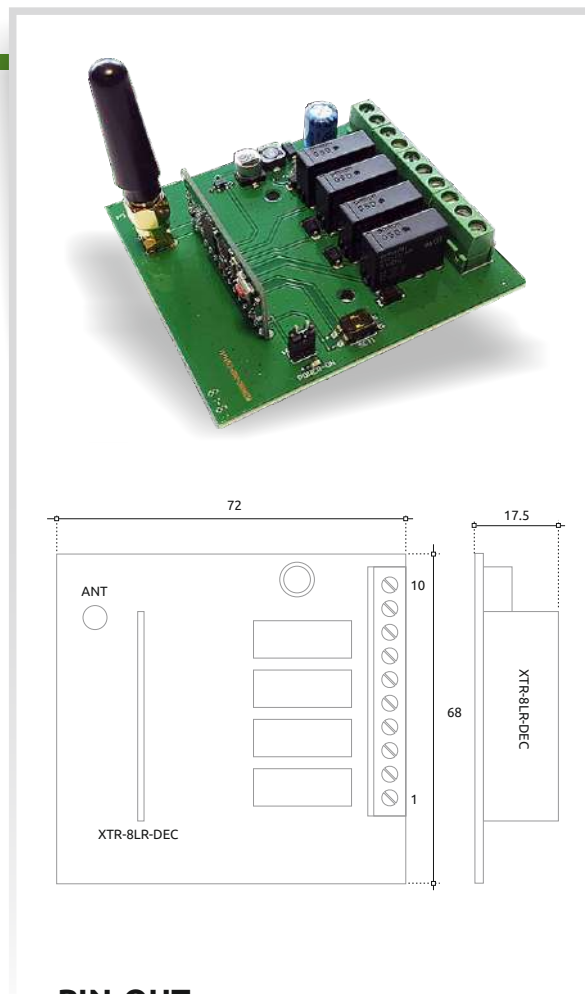
DEC-8LR-4 is a bidirectional radio control operating at 868.3 MHz with LoRa™ modulation able to guarantee long distance communications, high immunity to interference, high sensitivity and reduced energy consumption.

Complementary to the Aurel encoders ENC-8LR and XTR-8LR-4ZN remote control, it allows to store up to 48 encoder and control loads up to 5A in mono and bistable mode.

It is ideal for long distance control applications (8 km at sight) such as irrigation systems, alarms, etc.

The power supply and control inputs connections of the radio channel can be available by a 5 mm pitch screw-style terminal block.

Compatible with ENC-8LR & XTR-8LR-4ZN



Information subject to change without notice

PIN-OUT

- | | |
|----------------------|------------------------|
| 1) CH4 Relay contact | 6) CH2 Relay contact |
| 2) CH4 Relay contact | 7) CH1 Relay contact |
| 3) CH3 Relay contact | 8) CH1 Relay contact |
| 4) CH3 Relay contact | 9) GND or Vac supply |
| 5) CH2 Relay contact | 10) +Vdc or Vac supply |

TECHNICAL SPECIFICATION

Ta = 25 °C

CARATTERISTICHE	CARATTERISTICHE	MIN	TYP	MAX	UNIT
DC Power supply	Tensione DC	9	12	26	V
AC Power supply	Tensione AC	12	14	26	V
Supply current TX state (12Vdc supply)	Assorbimento di corrente in TX (12Vdc supply)		26		mA
Supply current RX state (12Vdc supply)	Assorbimento di corrente in RX (12Vdc supply)		11		mA
Supply current RX-IDLE state (open relè)	Assorbimento in RX-IDLE (relè aperti)		3.4		mA
Relay contact switching current 220Vac	Corrente contatto relè 220Vac			5	A
Relay contact switching current 30Vdc	Corrente contatto relè 30Vdc			5	A
RF frequency	Frequenza di trasmissione RF		868.30		MHz
RF Power	Potenza RF		13		dBm
Modulation	Modulazione RF		LoRa™		
RX Sensitivity	Sensibilità in ricezione		-126		dBm
Operating temperature	Temperatura di funzionamento	-20		+70	°C

X-ON Electronics

Largest Supplier of Electrical and Electronic Components

Click to view similar products for [RF Modules](#) category:

Click to view products by [Aurel](#) manufacturer:

Other Similar products are found below :

[HMC-C009](#) [HMC-C011](#) [nRF24L01P-MODULE-PCB](#) [HMC-C021](#) [HMC-C024](#) [XB9XT-DPRS-721](#) [XBP9B-DMUTB022](#) [nRF24L01P-MODULE-SMA](#) [CMD-KEY2-418-CRE](#) [XM-C92-2P-UA](#) [XB9XT-DPUS-721](#) [V640-A90](#) [HMC-C583](#) [MAAM-008818-TR3000](#) [MTSMC-H5-U](#) [SIMSA868-PRO](#) [SIMSA915C-PRO](#) [SIMSA868C-PRO](#) [SIMSA433C-PRO](#) [SIMSA915-PRO](#) [XBP9B-DMUT-042](#) [HMC-C582](#) [HMC-C022](#) [XBP9B-DPST-041](#) [XBP9B-DMWT-042](#) [SM-MN-00-HF-RC](#) [HMC-C031](#) [MT-02](#) [M1002GB](#) [702-W](#) [SIMSA868C-N-PRO](#) [SIMSA433C-N-PRO](#) [SIMSA915C-N-PRO](#) [ADP-R202-00B](#) [PEPPER WIRELESS C1 USB](#) [S2-10732-Z1T61](#) [S2-107XB-Z2356-Z2352](#) [S2-10672-Z1L85](#) [S2-10686-Z1L1D](#) [S2-10688-Z1L1T](#) [S2-106BA-Z1P20](#) [S2-1060C-Z1F0A](#) [S2-106R4-Z1Q6F-Z1Q6Q](#) [S2-106R4-Z1Q6J-Z1Q6Q](#) [S2-106RB-Z1Q6V-Z1Q6Q](#) [S2-107DR-Z1Y5B](#) [SU60-2230C-PU](#) [RC-TFSK3-868](#) [NANO RFID POE](#) [650201424G](#)