

Encoder LoRa™

4 Dry Contact Input

ENC-8LR

P.N. 650201455G

DESCRIZIONE

ENC-8LR è un radiocomando bidirezionale operante a 868.3 MHz con modulazione LoRa™ in grado di garantire comunicazioni a lunghissima distanza, elevata immunità alle interferenze, elevata sensibilità e ridotti consumi energetici.

Il dispositivo, abbinato alla scheda decoder DEC-8LR-4, permette di controllare 4 differenti carichi da elevata distanza (8 Km a vista) quali impianti di irrigazione, allarmi.

Un led ed un buzzer segnalano all'utilizzatore lo stato di uscita del complementare decoder.

Le connessioni di alimentazione e ingresso di controllo del canale radio, sono accessibili mediante una morsettiera passo 5 mm.

Compatibile con DEC-8LR-4

DESCRIPTION

ENC-8LR is a bidirectional radio control operating at 868.3 MHz with LoRa™ modulation able to guarantee long distance communications, high immunity to interference, high sensitivity and low energy consumption.

ENC-8LR, combined with the Aurel board, DEC-8LR-4 decoder, allows to control 4 different loads from high distance (8 km at sight) such as irrigation systems, alarms, etc.

A blink led and buzzer, feedback to the user the output status of the complementary decoder.

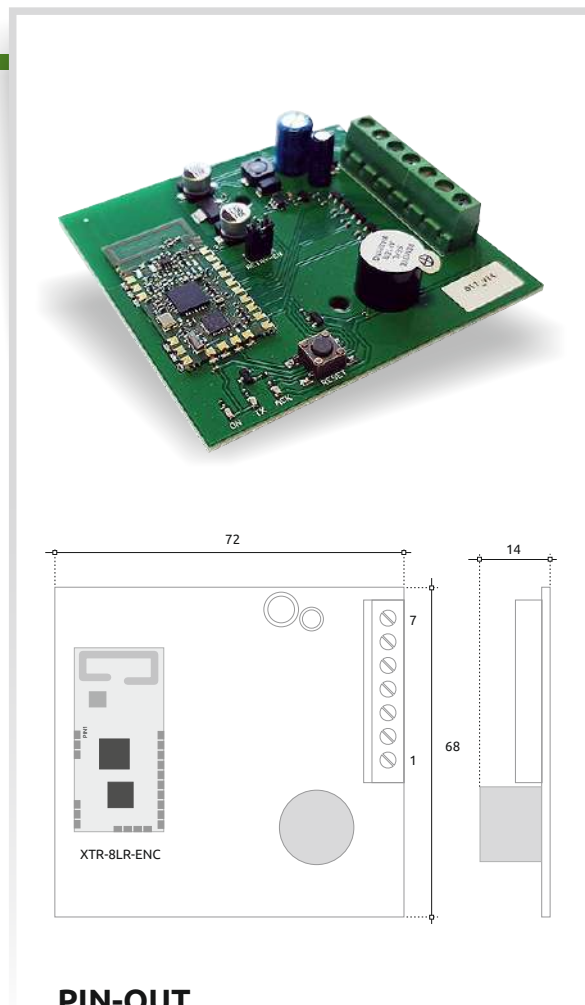
The power supply and control inputs connections of the radio channel can be available by a 5 mm pitch screw-style terminal block.

Compatible with DEC-8LR-4

TECHNICAL SPECIFICATION

Ta = 25 °C

CARATTERISTICHE	CARATTERISTICHE	MIN	TYP	MAX	UNIT
DC Power supply	Tensione DC	9	12	26	V
AC Power supply	Tensione AC	12	24	26	V
Supply current TX state (12Vdc supply)	Assorbimento di corrente in TX (12Vdc supply)		36		mA
Supply current RX state (12Vdc supply)	Assorbimento di corrente in RX (12Vdc supply)		14		mA
Supply current shut-down state (input open)	Assorbimento in shut-down (ingressi aperti)			16	µA
RF frequency	Frequenza di trasmissione RF		868.30		MHz
ERP RF Power	Potenza ERP		10		dBm
Modulation	Modulazione RF		LoRa™		
RX Sensitivity	Sensibilità in ricezione		-126		dBm
Operating temperature	Temperatura di funzionamento	-20		+70	°C



PIN-OUT

- 1) CH1 input control
- 2) CH2 input control
- 3) CH3 input control
- 4) CH4 input control
- 5) COM TX
- 6) GND or Vac supply
- 7) +Vdc or Vac supply

X-ON Electronics

Largest Supplier of Electrical and Electronic Components

Click to view similar products for [RF Modules](#) category:

Click to view products by [Aurel](#) manufacturer:

Other Similar products are found below :

[HMC-C009](#) [HMC-C011](#) [nRF24L01P-MODULE-PCB](#) [HMC-C021](#) [HMC-C024](#) [XB9XT-DPRS-721](#) [XBP9B-DMUTB022](#) [nRF24L01P-MODULE-SMA](#) [CMD-KEY2-418-CRE](#) [XM-C92-2P-UA](#) [XB9XT-DPUS-721](#) [V640-A90](#) [HMC-C583](#) [MAAM-008818-TR3000](#) [MTSMC-H5-U](#) [SIMSA868-PRO](#) [SIMSA915C-PRO](#) [SIMSA868C-PRO](#) [SIMSA433C-PRO](#) [SIMSA915-PRO](#) [XBP9B-DMUT-042](#) [HMC-C582](#) [HMC-C022](#) [XBP9B-DPST-041](#) [XBP9B-DMWT-042](#) [SM-MN-00-HF-RC](#) [HMC-C031](#) [MT-02](#) [M1002GB](#) [702-W](#) [SIMSA868C-N-PRO](#) [SIMSA433C-N-PRO](#) [SIMSA915C-N-PRO](#) [ADP-R202-00B](#) [PEPPER WIRELESS C1 USB](#) [S2-10732-Z1T61](#) [S2-107XB-Z2356-Z2352](#) [S2-10672-Z1L85](#) [S2-10686-Z1L1D](#) [S2-10688-Z1L1T](#) [S2-106BA-Z1P20](#) [S2-1060C-Z1F0A](#) [S2-106R4-Z1Q6F-Z1Q6Q](#) [S2-106R4-Z1Q6J-Z1Q6Q](#) [S2-106RB-Z1Q6V-Z1Q6Q](#) [S2-107DR-Z1Y5B](#) [SU60-2230C-PU](#) [RC-TFSK3-868](#) [NANO RFID POE](#) [650201424G](#)