

FEATURES

26W Constant Current LED Driver

LEDWC-026 Series

- High Efficiency (Up to 86%)
- Active Power Factor Correction (Typical 0.95)
- IP66
- RoHS Compliant
- Short Circuit Protection
- Approved to UL8750 & EN61347 Safety Standards
- Class 2 Output (Some models) & SELV



SPECIFICATIONS

Model #	Rated Current (11)	Voltage Range	No Load Voltage	Efficiency (5)
LEDWC-026S035PS (4,8)	350mA	38~75Vdc	85Vdc	86%
LEDWC-026S045PS (5,8)	450mA	28~56Vdc	59Vdc	85%
LEDWC-026S070PS (6,8)	700mA	19~37Vdc	42Vdc	85%
LEDWC-026S105PS (7,8)	1050mA	13~25Vdc	32Vdc	84%
LEDWC-026S140PS (7,8)	1400mA	10~19Vdc	26Vdc	82%
LEDWC-026S175PS (7,8)	1750mA	8~15Vdc	22Vdc	81%

Output	Rated Power	26W	
	Output Ripple	25% I _o	
	Line Regulation	±1%	
	Load Regulation	±3%	
	Overshoot/Undershoot	10% I _o	
	Turn On Delay (Typ.)	0.6s Measured at 120Vac Input / 0.3s Measured at 220Vac Input	
Input	Voltage Range	90~305Vac	
	Frequency Range	47Hz~63Hz	
	Inrush Current	40A @ 220Vac Input 25°C Cold start, Duration=100µs, 10% I _{pk} -10% I _{pk}	
	Leakage	0.75mA at 277Vac 60Hz input	
	PF	0.96@120Vac / 0.95@220Vac	
	AC Current (Typ.)	0.4A / 100Vac 0.2A / 220Vac	
	THD	20% at 100Vac-277Vac, 75%load-100%load	
Protections	Short Circuit	Hiccup mode, no damage shall occur and the power supply shall restart when the fault condition is removed	
Environmental	Temperature Range	Operational	-40°C~70°C (see derating curve)
		Storage	-40°C~85°C
	Humidity	Operational	10%~100%RH
		Storage	5%~100%RH
Safety & EMC	Safety Standards	UL8750, UL1012, UL1310, Class 2, CSA-C22.2 No. 107.1, CSA C22.2 NO.223-M91 Class 2	
	Conducted & Radiated EMI	EN55015 Class B	
	Harmonic Current	EN 61000-3-2	
	EMS	EN61000-4-2, EN61000-4-3, EN61000-4-4, EN61000-4-5, EN61000-4-6, EN61000-4-8, EN61000-4-11, EN61547	
Others	MTBF	200,000 hours (Measured at 120Vac Input, 80% load and 25°C ambient temperature (MIL-HDBK-217F))	
	Life Time	91,000 hours (measured at 120Vac input, 80% load and 60°C case temperature)	
	Dimensions	(L*W*H) 78*80*27 mm 3.07*3.15*1.06 inches	
	Weight	200g	

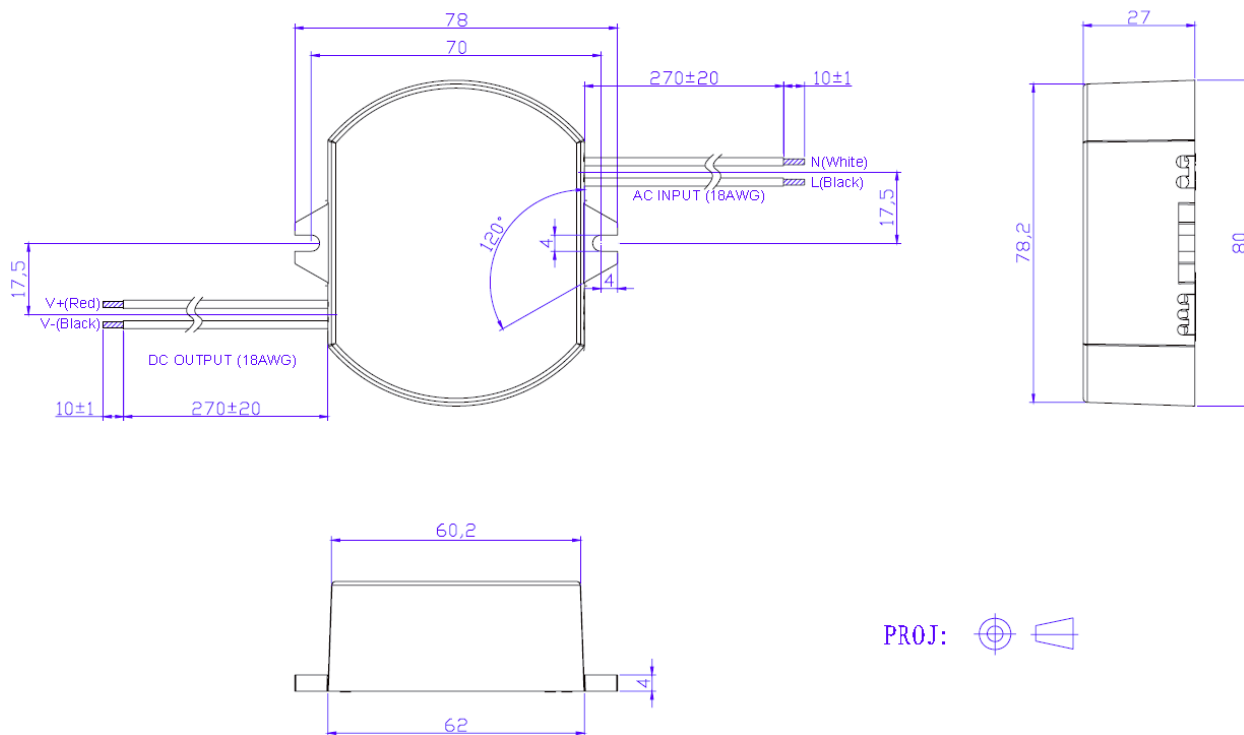
Notes:



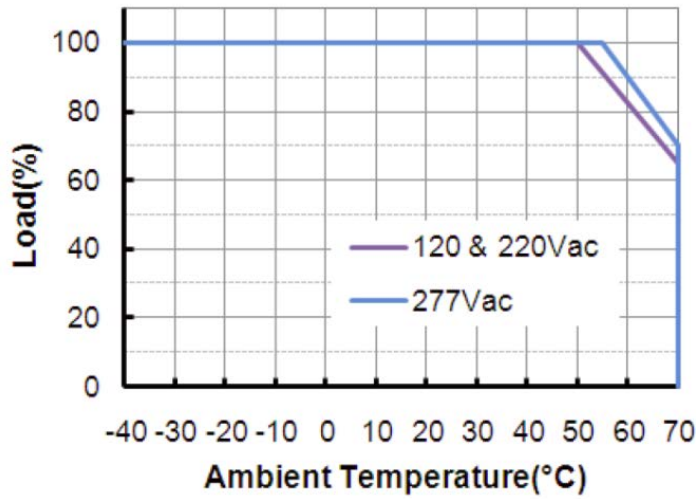
Notes:

1. Measured at full load and 220Vac Input.
2. The – suffix may be changed to D to omit the dimming function and remove the three wires associated with that function
3. A suffix xxx may be added to denote variations or modifications to the base product, where x can be any alphanumeric character or blank.
4. Non-Class 2 output (USR & NCR)
5. Class 2 output (USR), Non-Class 2 output (CNR)
6. Class 2 output (USR), Class 2 output (CNR) only for wet location.
7. Class 2 output (USR & CNR) for wet location.
8. SELV

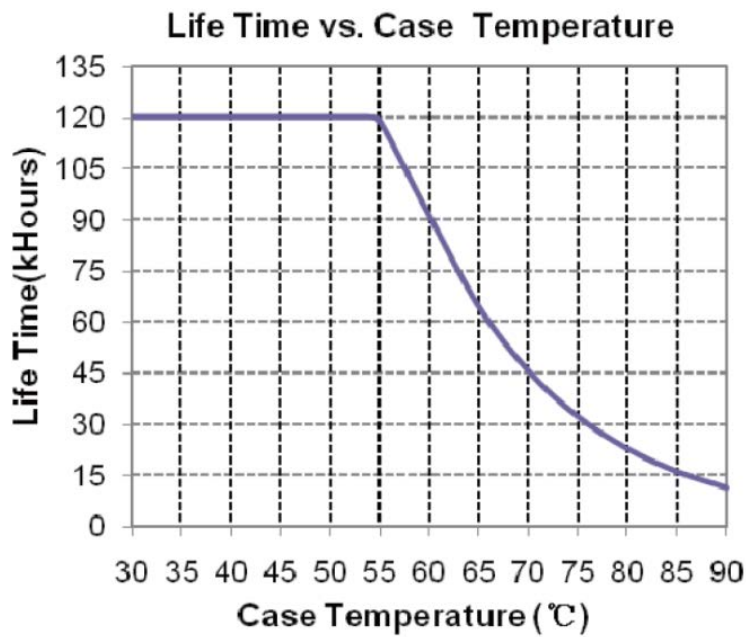
Mechanical Specifications



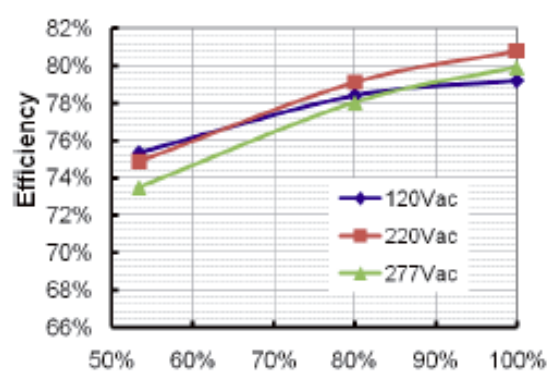
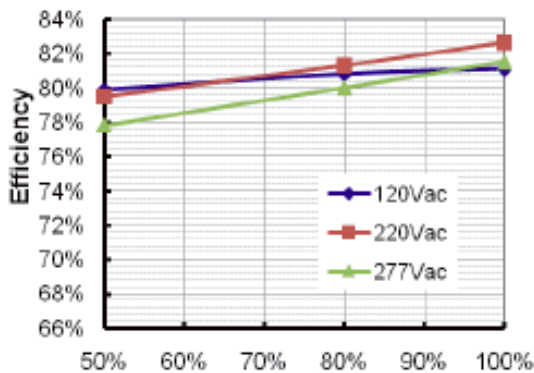
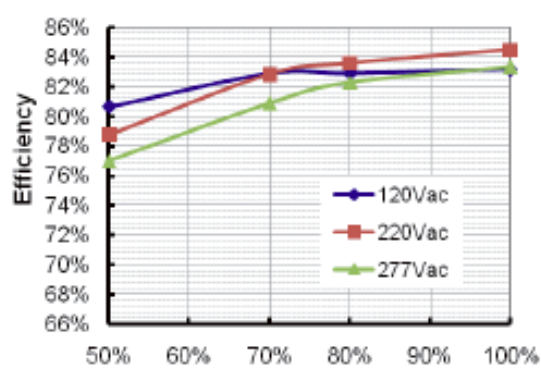
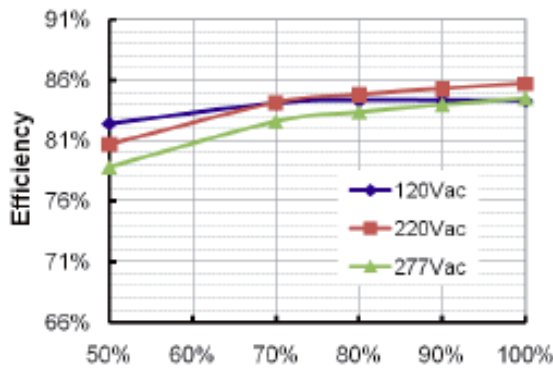
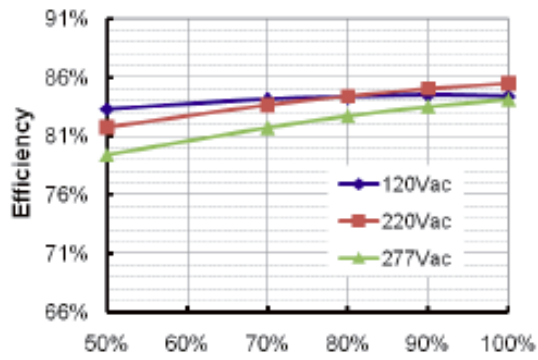
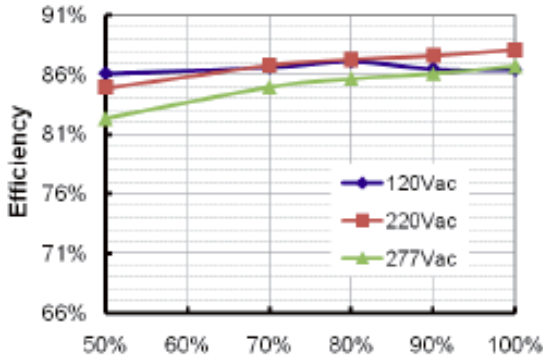
Ambient Temperature Derating



Life Time Curve



Efficiency at Output Voltage Load

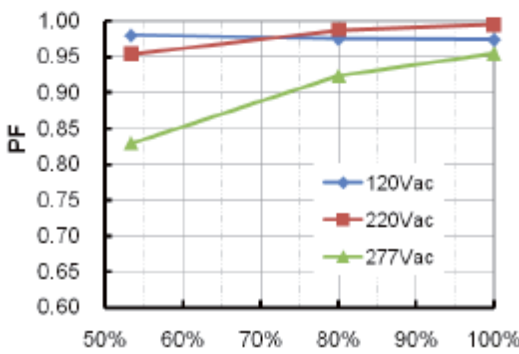
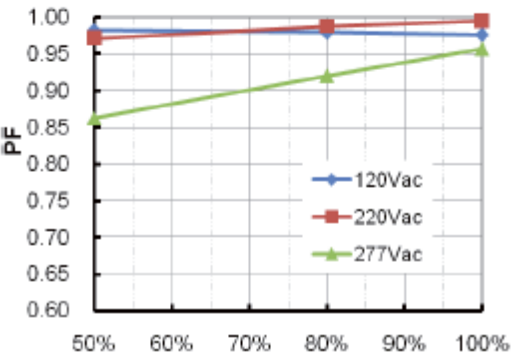
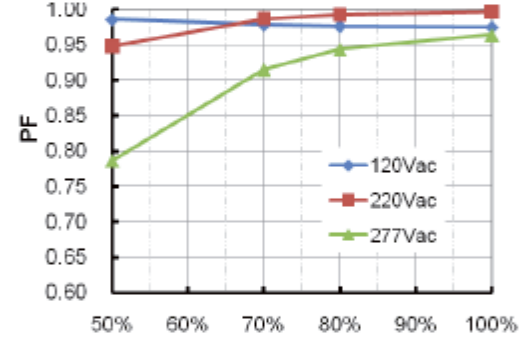
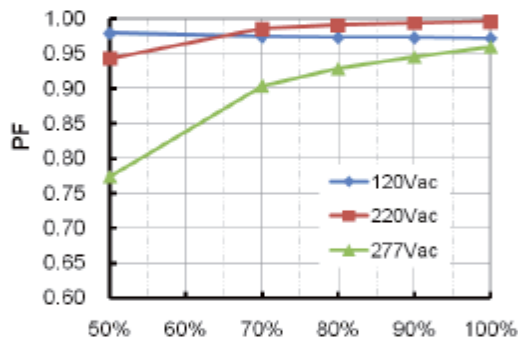
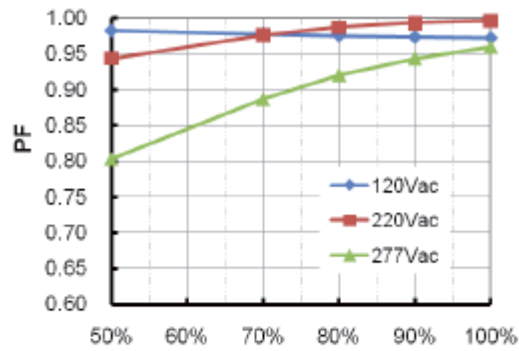
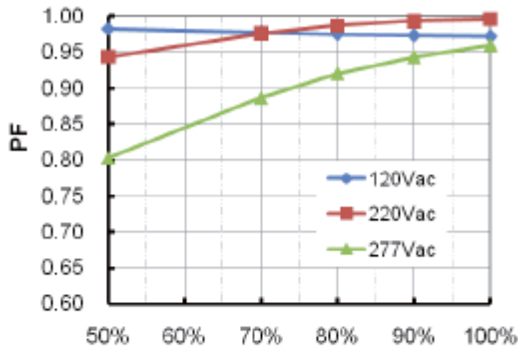


Output Voltage

Output Voltage



Power Factor at Output Voltage Load



Output Voltage

Output Voltage



PART NUMBER SCHEME

LEDWC-026SxxxPS

L=LED Driver

W= Wide Range 90~305 Vac

C= Constant Current

026= Output (Watts)

S= Class II, 2 Wire Input

P= Plastic case

xxx= Output Current

S= Single Output

SPECIFICATIONS ARE SUBJECT TO CHANGE WITHOUT NOTICE AUTEC IS NOT RESPONSIBLE FOR ISSUES ARISING FROM ERRORS OR OMMISIONS



X-ON Electronics

Largest Supplier of Electrical and Electronic Components

Click to view similar products for [LED Display Drivers](#) category:

Click to view products by [Autec Power Systems](#) manufacturer:

Other Similar products are found below :

[MAP9000QNRH](#) [AP5726WUG-7](#) [AL8806QMP-13](#) [AP5726FDCG-7](#) [AS3693B-ZTQT](#) [AP5725WUG-7](#) [MAX139EQH+D](#) [STP16DP05PTR](#)
[STP16CPP05PTR](#) [STP16CPP05XTTR](#) [LV5236VZ-TLM-H](#) [BP9911CC](#) [ZXLD1366QEN8TC](#) [MT7725D](#) [TX6143](#) [SY6813PEC](#) [SD1002L4](#)
[AW3643CSR](#) [MP3370GN-Z](#) [LA2284L-G09-T](#) [SEDA](#) [SCT2027CSSG](#) [LYT3315D](#) [LYT3324D](#) [LYT4211E2](#) [LYT4214E2](#) [LYT4215E2](#)
[LYT4217E2](#) [LYT4218E2](#) [LYT4222E](#) [LYT4317E2](#) [LYT4321E](#) [LYT4323E](#) [LYT4324E3](#) [LYT4326E3](#) [TPS92020DR](#) [TPS92691PWPR](#)
[BCR420U](#) [HV9801ALG-G](#) [IS31FL3199-QFLS2-TR](#) [IS31FL3731-QFLS2-TR](#) [CAT4238TD](#) [SCT2001ASIG](#) [SCT2024CSTG](#) [SCT2167CSOG](#)
[SCT2167CSSG](#) [STP16CPPS05XTTR](#) [TLE4241GMFUMA1](#) [ICM7212MIQH+D](#) [ICM7212AIQH+D](#)