

BPS Series

Slim Photoelectric Sensor For Long Sensing Distance

■ Features

- Easy to mount by Flat type
- Realization of 3m sensing distance as small size
- Protection structure IP67 (IEC standard)



⚠ Please read "Caution for your safety" in operation manual before using.



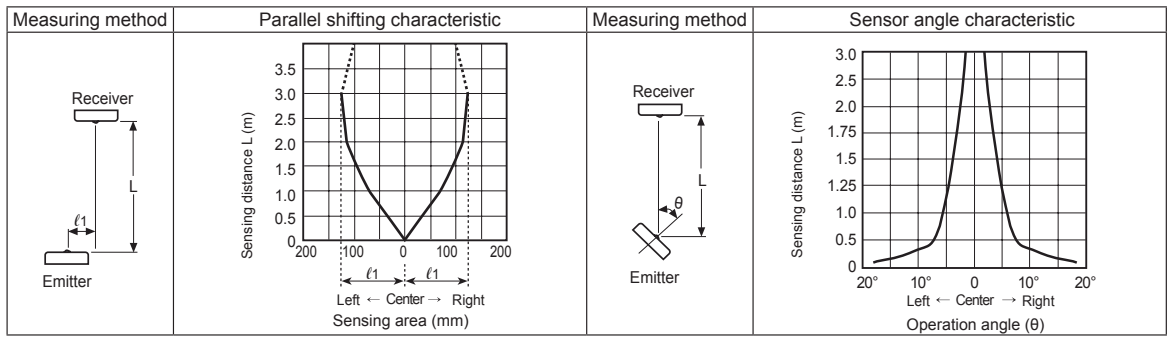
■ Specifications

Model	NPN open collector output	BPS3M-TDT	BPS3M-TDTL
	PNP open collector output	BPS3M-TDT-P	BPS3M-TDTL-P
Sensing type	Through-beam		
Sensing target	Opaque materials of Min. Ø5mm		
Operation mode	Dark ON	Light ON	
Sensing distance	3m		
Response time	Max. 1ms		
Power supply	12-24VDC ±10% (Ripple P-P: Max. 10%)		
Current consumption	Max. 20mA		
Light source	Infrared LED (850nm)		
Control output	NPN or PNP open collector output ●Load voltage: Max. 30VDC ●Load current: Max. 100mA ●Residual voltage - NPN: Max. 1V, PNP: Max. 2.5V		
Protection circuit	Reverse polarity protection, Output short-circuit protection		
Indicator	Emitter: Power indicator (red LED), Receiver: Operation indicator (red LED)		
Insulation resistance	Min. 20MΩ (at 500VDC megger)		
Noise resistance	±240V the square wave noise (pulse width: 1μs) by the noise simulator		
Dielectric strength	1,000VAC 50/60Hz for 1minute		
Vibration	1.5mm amplitude at frequency of 10 to 55Hz (for 1 min.) in each X, Y, Z direction for 2 hours		
Shock	500m/s ² (approx. 50G) in each X, Y, Z direction for 3 times		
Environment	Ambient illumination	Sunlight: Max. 11,000lx , Incandescent lamp: Max. 3,000lx (Receiver illumination)	
	Ambient temperature	-25 to 65°C, storage: -25 to 70°C	
	Ambient humidity	35 to 85%RH, storage: 35 to 90%RH	
Protection structure	IP67 (IEC standard)		
Material	Case: PC		
Cable	Ø3mm, 3-wire, Length: 2m (Emitter of through-beam type: Ø3mm, 2-wire, Length: 2m) (AWG24, Core diameter: 0.08mm, Number of cores: 40, Insulator out diameter: Ø1mm)		
Approval	CE		
Unit weight	Approx. 66g		

※The temperature or humidity mentioned in Environment indicates a non freezing or condensation environment.

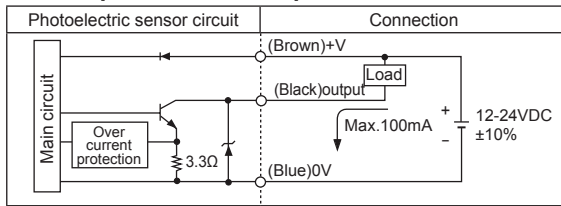
Slim And Amplifier Built-in Type

Feature Data

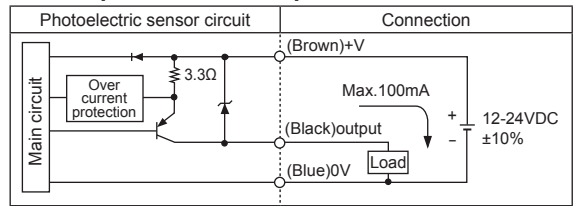


Control Output Diagram

• NPN open collector output



• PNP open collector output

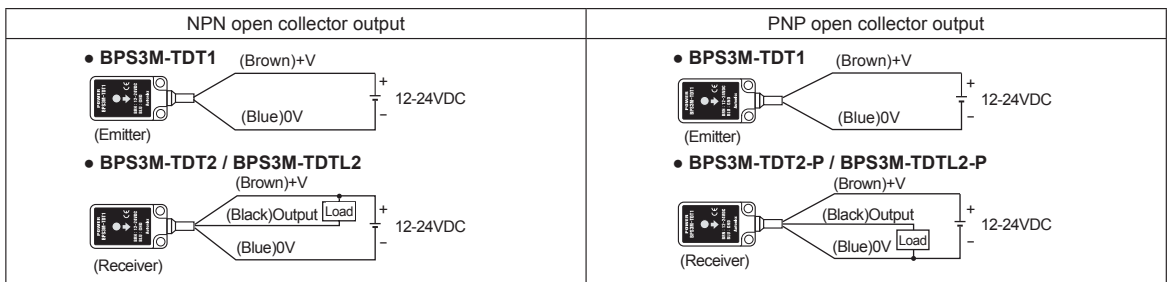


Operation Mode

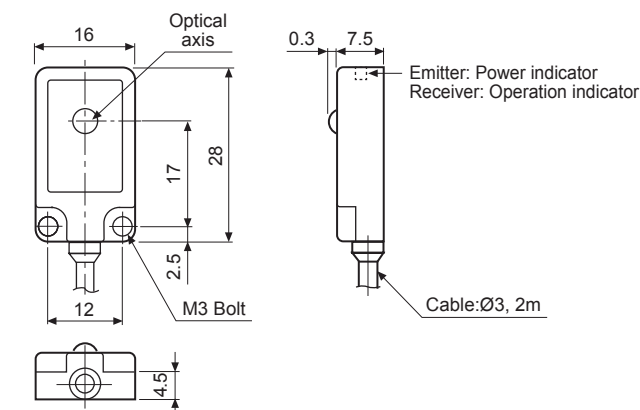
Operation mode	Light ON	Dark ON
Receiver operation	Received light Interrupted light	Received light Interrupted light
Operation indicator (red LED)	ON OFF	ON OFF
Transistor output	ON OFF	ON OFF

※If the control output terminal is short-circuited or overcurrent condition exists, the control output turns OFF due to protection circuit.
 ※Dark ON mode is standard and Light ON (Received light: ON) mode is customizable.

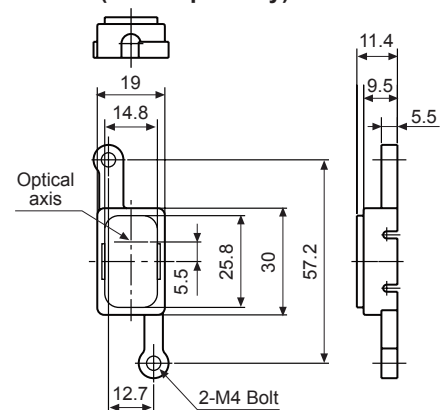
Connections



Dimensions



• Cover (sold separately) (unit: mm)



(A) Photoelectric Sensors

(B) Fiber Optic Sensors

(C) Door/Area Sensors

(D) Proximity Sensors

(E) Pressure Sensors

(F) Rotary Encoders

(G) Connectors/ Sockets

(H) Temperature Controllers

(I) SSRs / Power Controllers

(J) Counters

(K) Timers

(L) Panel Meters

(M) Tacho / Speed / Pulse Meters

(N) Display Units

(O) Sensor Controllers

(P) Switching Mode Power Supplies

(Q) Stepper Motors & Drivers & Controllers

(R) Graphic/ Logic Panels

(S) Field Network Devices

(T) Software

X-ON Electronics

Largest Supplier of Electrical and Electronic Components

Click to view similar products for [Photoelectric Sensors](#) category:

Click to view products by [Autonics](#) manufacturer:

Other Similar products are found below :

[E3JM-DS70R4T-US](#) [E3L2DC4](#) [E3RA-DN12 2M](#) [E3RA-DP12 2M](#) [E3S5LE4S](#) [E3S-AD38](#) [E3S-CR11 5M](#) [E3SCT11D5M](#) [E3SCT11M1J03M](#)
[E3T-SL14R](#) [E3T-SL24 5M](#) [E3T-ST12R](#) [E3X-CN02](#) [E3X-CN11 5M](#) [E3X-CN21 10M](#) [E3ZM-B66](#) [E3ZM-CL81H 2M](#) [E3Z-T62 2M](#)
[NJL5303R-TE1](#) [PB10CNT15PO](#) [PD60CNX20BP](#) [CX-491-P-J](#) [CX-491-Z](#) [XUM2BKCNL2T](#) [XUM2BKCNL2T](#) [XUM2BNANL2R](#) [Y92E-](#)
[ES30M](#) [Y92E-GS08SS](#) [ZXTDS04T](#) [ZX-XC4A 4M](#) [E3E23Y2US](#) [E3JM-DS70S4-US](#) [E3RA-RN11 2M](#) [E3S5LE42M](#) [E3S-LS20XB4 5M](#)
[E3TFD14N](#) [E3T-FD14R](#) [E3T-SL21 5M](#) [E3T-SL21M](#) [E3T-ST11R](#) [E3T-ST12 5M](#) [E3X-DA41-S-M1J 0.3M](#) [E3X-DAB6](#) [E3X-DAG8](#) [E3ZM-](#)
[B86](#) [E3ZM-CR81 2M](#) [E3ZM-CR86](#) [E3Z-T61A-L 2M](#) [ZX-XGC2R](#) [ZX-XB1A](#)