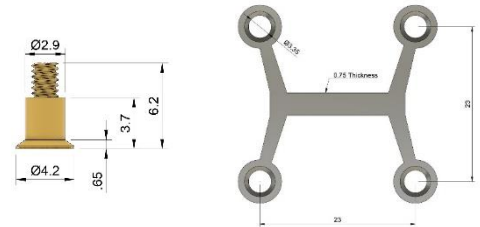


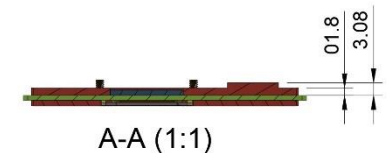
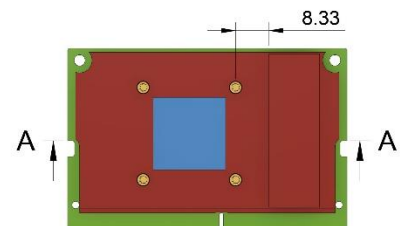
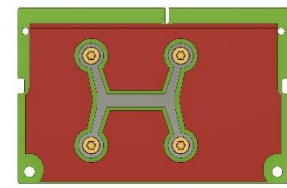
### Heatsink / Heatspreader / Leaf spring

The TX2 NX leaf spring kits for secure mounting of cooling solutions. This ensures optimal thermal interface while minimizing the risk of damaging the module.



#### Implementation guidelines

- Refer to Nvidia Jetson TX2 NX Thermal Design Guide for thermal dissipation requirements
- Use M2x0.4 thread with at least 3mm depth fully formed thread in heatspreader/sink
- Recommended material for heatsink is aluminum or copper
- Use intermediate heat transfer compound (paste or pad), do not screw the module directly to heatsink/heatspreader or case
- When using heatspreader use thermal pad >0.5mm between heatspreader and case to ensure thermal conductivity
- Do not cover the module envelope
- Use <0.15Nm for M2 screws
- Handle module with care during assembly (ESD)
- Ensure correct orientation of the spring. The leaf spring should only contact the module in the middle
- SO-DIMM connector spacers must be used to reduce stress on the PCB



RED: module envelope, keep out zone for component clearance  
 BLUE: Processor die  
 GREEN: PCB + underside  
 The envelope for thermal solution 3D model is available in the Nvidia developer download area



#### Leaf spring kit TX2 NX:

Each kit includes

- Leaf spring (155-1019-000)
- 4 screws (155-1021-000)

#### Cooling kit TX2 NX:

Each kit includes

- Leaf spring (155-1019-000)
- 4 screws (155-1021-000)
- Heatsink with integrated fan (095-0102-000)

SKU	Kit
70841	Leaf spring kit TX2 NX
70842	Cooling kit TX2 NX
70756	Heatspreader 38x30x4.6mm
70757	Heatsink with fan (095-0102-000)

Specifications subject to change without notice. All trademarks are property of their respective holder.



## X-ON Electronics

Largest Supplier of Electrical and Electronic Components

*Click to view similar products for [Heat Sinks](#) category:*

*Click to view products by [Auvideo](#) manufacturer:*

Other Similar products are found below :

[657-20ABPNE](#) [73452PPBA](#) [A22-4026](#) [120-1873-007](#) [218-40CTE3](#) [231-69PAB-15V](#) [231-75PAB-13V](#) [231-75PAB-15V](#) [253-122ABE-22](#)  
[PSC22CB](#) [295-2](#) [CLP212SG](#) [D10100-28](#) [BDN183CBA01](#) [3-21053-4](#) [TX0506-1B](#) [LAE66A3CB](#) [511-3U](#) [73381PPBA](#) [73403PPBA](#) [8191-](#)  
[E40](#) [510-12M](#) [529802B00000](#) [D10650-40T5](#) [6225B-MT6G](#) [ATS-54310K-C2-R0](#) [648-51AB](#) [657-20ABPESC](#) [679-25AG](#) [FK 212 CB SA](#)  
[FK225 SA L1](#) [241404B91203G](#) [6801G](#) [680-5K](#) [7106DG/TR](#) [SK145 37 5STSTO220](#) [7109DG/TR](#) [TS-11042-CY](#) [S14K35G3S5](#) [8924G](#)  
[7717-133DAP](#) [7717-26DAP](#) [4509](#) [SW25-4G](#) [CLP-215](#) [CLP-207](#) [D20850-40-T2](#) [APF30-30-10CB/A01](#) [V8508E](#) [268-85CTE](#)