

Fine Pitch SMT Board to Board Connectors

Series 5602



Series 5602 is a two-piece 0.4mm pitch, PCB stacking connector. Offered at a 1.5mm stack height, Series 5602 is ideal for high density packaging applications.

Market applications include mobile PC's, PDA's, DVD, Cell Phones and Digital Cameras.

FEATURES

0.4mm fine pitch and low profile connector, with stacking height of 1.5mm. These features result in the highest density stacking connector in the industry.

The connector design provides for an audible click, which confirms that the contacts are properly mated.

Offered with, and without, metal strain relief and boss.

Designed to prevent solder wicking.

Enclosed SMT contacts, provide for high density routing, by allowing traces to be located under the connector.

Ideal for FPC to PCB connections.

Compatible with high temperature, lead free, soldering processes.

Packaging consists of 2,000 connectors per reel.

SPECIFICATIONS

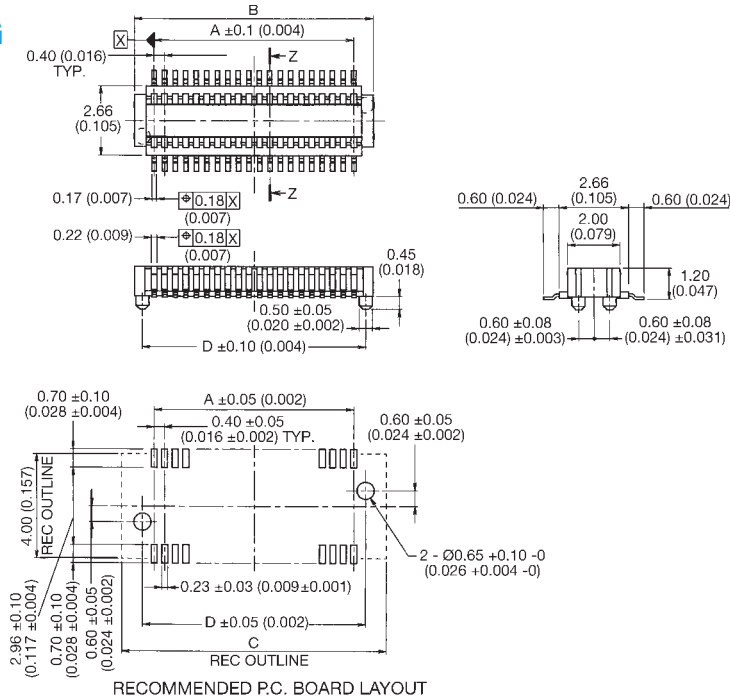
Series	5602
Mated Height	1.5mm
Pitch	0.4mm
Current	0.4A Max
Voltage	50V Max
D.W. Voltage	250V Max/min.
Mating Cycles	30

Fine Pitch SMT Board to Board Connectors



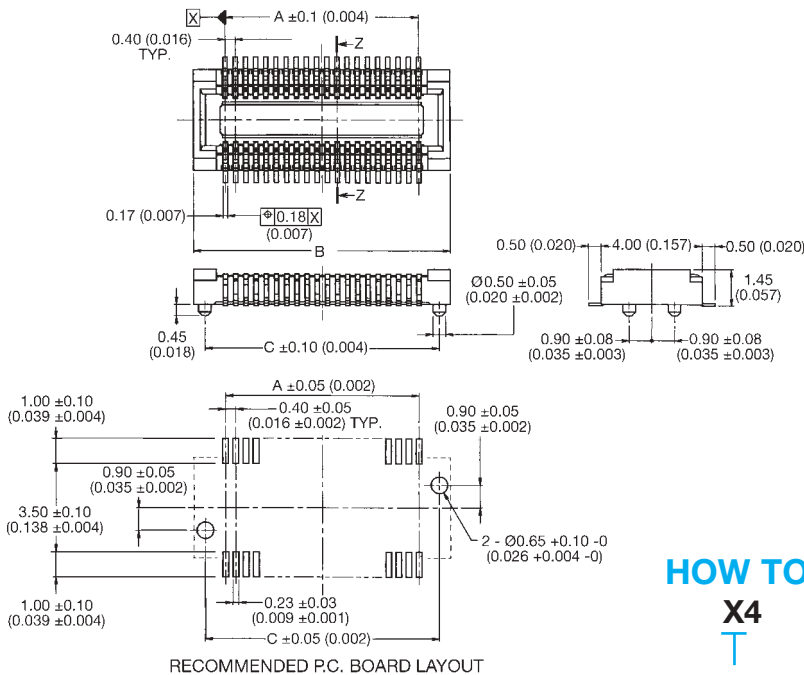
Series 5602 – 1.5mm Mated Height, without Strain Relief

PLUG



No. of Pos.	Dimension			
	A	B	C	D
020	3.6 (0.142)	5.1 (0.201)	6.1 (0.205)	4.5 (0.177)
024	4.4 (0.173)	5.9 (0.232)	6.9 (0.272)	5.3 (0.209)
030	5.6 (0.220)	7.1 (0.280)	8.1 (0.319)	6.5 (0.256)
034	6.4 (0.252)	7.9 (0.311)	8.9 (0.350)	7.3 (0.287)
040	7.6 (0.705)	9.1 (0.358)	10.1 (0.571)	8.5 (0.335)
050	9.6 (0.378)	11.1 (0.437)	12.1 (0.478)	10.5 (0.413)
060	11.6 (0.457)	13.1 (0.516)	14.1 (0.555)	12.5 (0.492)
070	13.6 (0.535)	15.1 (0.594)	16.1 (0.634)	14.5 (0.571)
080	15.6 (0.614)	17.1 (0.673)	18.1 (0.713)	16.5 (0.650)

RECEPTACLE



No. of Pos.	Dimension		
	A	B	C
020	3.6 (0.142)	6.1 (0.240)	5.2 (0.20)
024	4.4 (0.173)	6.9 (0.272)	6.0 (0.236)
030	5.6 (0.220)	8.1 (0.319)	7.2 (0.283)
034	6.6 (0.260)	8.9 (0.350)	8.0 (0.315)
040	7.6 (0.705)	10.1 (0.571)	9.2 (0.709)
050	9.6 (0.378)	12.1 (0.476)	11.2 (0.441)
060	11.6 (0.457)	14.1 (0.555)	13.2 (0.520)
070	13.6 (0.535)	16.1 (0.634)	15.2 (0.598)
080	15.6 (0.614)	18.1 (0.713)	17.2 (0.677)

HOW TO ORDER

X4

Prefix

14 = Plug
24 = Receptacle

5602

Series Number

XXX

Number of Positions

00X

Variation Code

0 = Without Strain Relief and without Boss
1 = Without Strain Relief and with Boss

829

Finish Code

020
024
030
034
040
050
060
070
080

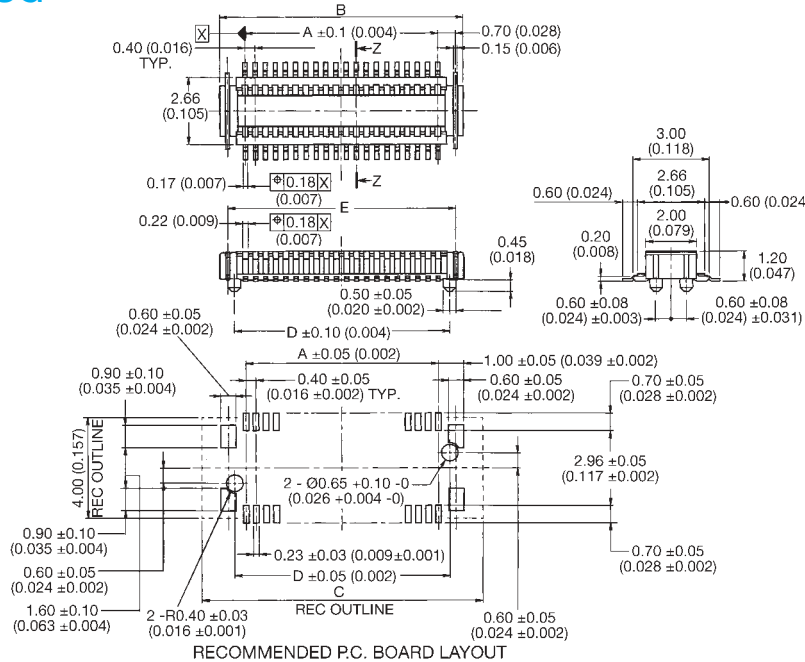
Parts are supplied in tape and reel packaging with 2000 pieces per reel.

Fine Pitch SMT Board to Board Connectors

Series 5602 – 1.5mm Mated Height, with Strain Relief

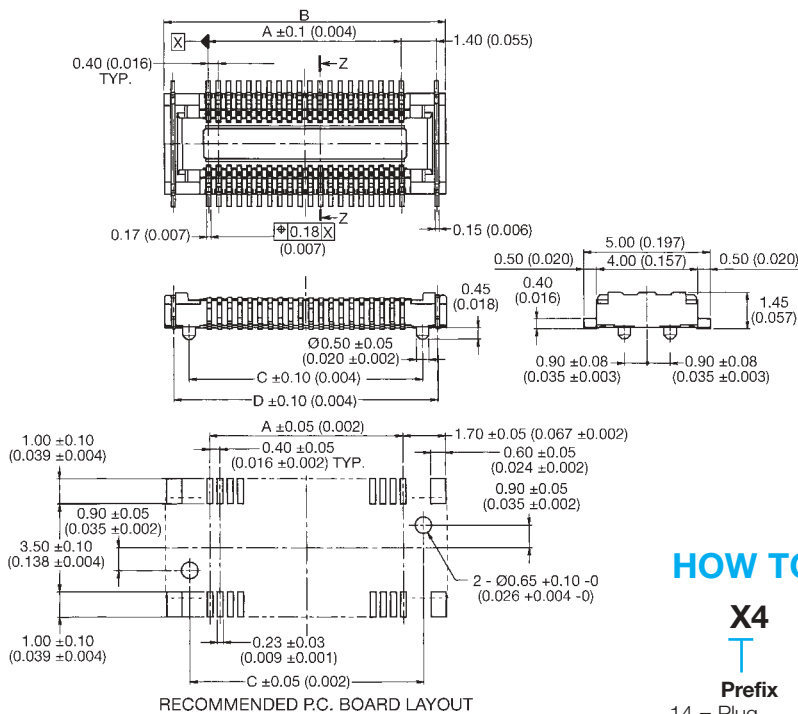


PLUG



No. of Pos.	Dimension				
	A	B	C	D	E
020	3.6 (0.142)	5.6 (0.220)	7.1 (0.280)	4.5 (0.177)	5.0 (0.197)
024	4.4 (0.173)	6.4 (0.252)	7.9 (0.3112)	5.3 (0.209)	5.8 (0.228)
030	5.6 (0.220)	7.6 (0.299)	9.1 (0.358)	6.5 (0.256)	7.0 (0.276)
034	6.4 (0.252)	8.4 (0.331)	9.9 (0.390)	7.3 (0.287)	7.8 (0.307)
040	7.6 (0.300)	9.6 (0.378)	11.1 (0.437)	8.5 (0.335)	9.0 (0.354)
050	9.6 (0.378)	11.6 (0.457)	13.1 (0.516)	10.5 (0.413)	11.0 (0.433)
060	11.6 (0.457)	13.6 (0.535)	15.1 (0.594)	12.5 (0.492)	13.0 (0.512)
070	13.6 (0.535)	15.6 (0.614)	17.1 (0.673)	14.5 (0.571)	15.0 (0.591)
080	15.6 (0.614)	17.6 (0.693)	19.1 (0.752)	16.5 (0.650)	17.0 (0.669)

RECEPTACLE



No. of Pos.	Dimension			
	A	B	C	D
020	3.6 (0.142)	7.1 (0.280)	5.2 (0.205)	6.4 (0.252)
024	4.4 (0.173)	7.9 (0.311)	6.0 (0.236)	7.2 (0.283)
030	5.6 (0.220)	9.1 (0.358)	7.2 (0.283)	8.4 (0.331)
034	6.4 (0.252)	9.9 (0.390)	8.0 (0.315)	9.2 (0.362)
040	7.6 (0.300)	11.1 (0.437)	9.2 (0.362)	10.4 (0.409)
050	9.6 (0.378)	13.1 (0.516)	11.2 (0.441)	12.4 (0.488)
060	11.6 (0.457)	15.1 (0.594)	13.2 (0.520)	14.4 (0.567)
070	13.6 (0.535)	17.1 (0.673)	15.2 (0.598)	16.4 (0.646)
080	15.6 (0.614)	19.1 (0.752)	17.2 (0.677)	18.4 (0.724)

HOW TO ORDER

X4

Prefix

14 = Plug
24 = Receptacle

5602

Series Number

XXX

Number of Positions

020
024
030
034
040
050
060
070
080

00X

Variation Code

2 = With Strain Relief and without Boss
3 = With Strain Relief and with Boss

829

Finish Code

Parts are supplied in tape and reel packaging with 2000 pieces per reel.

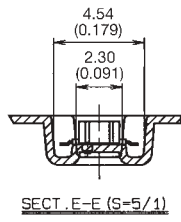
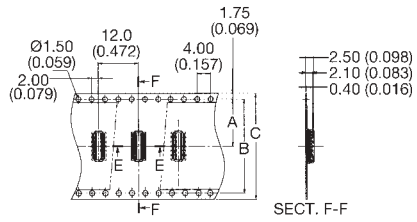
Fine Pitch SMT Board to Board Connectors

Series 5602

Tape and Reel Package for Mated Height 1.5mm

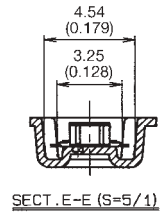
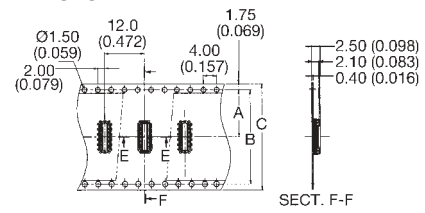
PLUG

Without Strain Relief



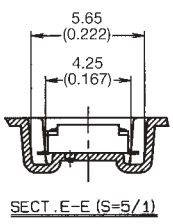
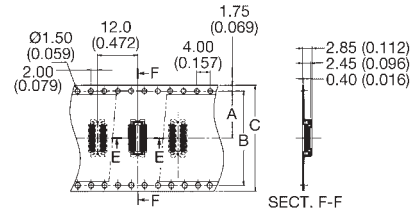
No. of Pos.	Dimension			
	A	B	C	D
020	11.5 (0.453)	-	24 (0.945)	30.4 (1.197)
024	11.5 (0.453)	-	24 (0.945)	30.4 (1.197)
030	11.5 (0.453)	-	24 (0.945)	30.4 (1.197)
034	11.5 (0.453)	-	24 (0.945)	30.42 (1.197)
040	11.5 (0.453)	-	24 (0.945)	30.4 (1.197)
050	14.2 (0.559)	28.4 (0.921)	32 (1.260)	38.4 (1.512)
060	14.2 (0.559)	28.4 (0.921)	32 (1.260)	38.4 (1.512)
070	14.2 (0.559)	28.4 (0.921)	32 (1.260)	38.4 (1.512)
080	14.2 (0.559)	28.4 (0.921)	32 (1.260)	38.4 (1.512)

With Strain Relief



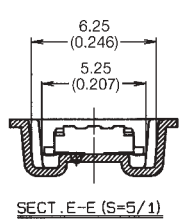
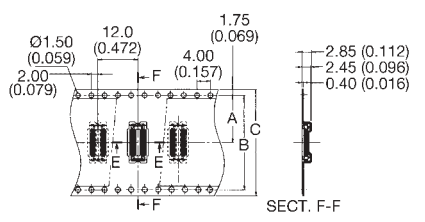
RECEPTACLE

Without Strain Relief



No. of Pos.	Dimension			
	A	B	C	D
020	11.5 (0.453)	-	24 (0.945)	30.4 (1.197)
024	11.5 (0.453)	-	24 (0.945)	30.4 (1.197)
030	11.5 (0.453)	-	24 (0.945)	30.4 (1.197)
034	11.5 (0.453)	-	24 (0.945)	30.42 (1.197)
040	11.5 (0.453)	-	24 (0.945)	30.4 (1.197)
050	14.2 (0.559)	28.4 (0.921)	32 (1.260)	38.4 (1.512)
060	14.2 (0.559)	28.4 (0.921)	32 (1.260)	38.4 (1.512)
070	14.2 (0.559)	28.4 (0.921)	32 (1.260)	38.4 (1.512)
080	14.2 (0.559)	28.4 (0.921)	32 (1.260)	38.4 (1.512)

With Strain Relief



HOW TO ORDER

X4
Prefix
14 = Plug
24 = Receptacle

5602
Series Number

XXX
Number of Positions
020
024
030
034
040
050
060
070
080

00X
Variation Code
0 = Without Strain Relief and without Boss
1 = Without Strain Relief and with Boss
2 = With Strain Relief and without Boss
3 = With Strain Relief and with Boss

829
Finish Code

Specification of the catalog might be changed without notice.
Please verify our drawing and specification with your design.
Parts are supplied in tape and reel packaging with 2000 pieces per reel.

X-ON Electronics

Largest Supplier of Electrical and Electronic Components

Click to view similar products for [avx manufacturer](#):

Other Similar products are found below :

[MD015A222JAB](#) [M39014/220755](#) [VE17M02750K--](#) [SV097C105MAA](#) [CX2016DB16000D0GPSC1](#) [AOL-1502-02](#) [LIFE_SAMP-1A139-159V001](#) [88011-154 RF](#) [CWR09HC106KBA](#) [00-8129-015-610-108](#) [PBRC7.37MR50X000](#) [M39014/22-1137-TUBE](#) [3640CC224KAT6A](#)
[M39014/220778](#) [M39014/220458](#) [105061100000861+](#) [CDR12BP102AKUM](#) [CDR12BP330AJUR\M500](#) [18123A104FAT2A](#)
[CDR12BP221AJUR\M500](#) [00 6224020001800](#) [LD12CC104KAB1A](#) [L08052R2DEWTR](#) [009286001203906](#) [M39014/22-1181](#)
[F931A227KNC](#) [F931C227MNC](#) [FFLI6B3007KJE](#) [12102U101JAT2A](#) [KIT5000UZ](#) [KITTYPE1400 LF](#) [LD065A332FAB2A](#) [SA205C393JAA](#)
[308016056000413](#) [SK052C105KAA](#) [SR211A151FAA](#) [F931A226MBA](#) [FFB24I0755K--](#) [CK06BX472K](#) [M39014/05-2731](#) [M39014/220476](#)
[CWR29JC476KCHC](#) [TAJB225M035R](#) [TAJC107K006RNJ](#) [TAJD226K035RNJV](#) [TCH9107M035W0055U](#) [TLCU336M004XTA](#)
[TPSA106K016R1000](#) [TPSD337K010R0150](#) [TPSE226K035R0200](#)