

P1177E-500

17" SXGA TFT Expandable Industrial Touch Panel Computer with 7th/6th Gen Intel® Core™ i7/i5/i3, Celeron® & Pentium® Processor and PCI/PCIe Slot

Features

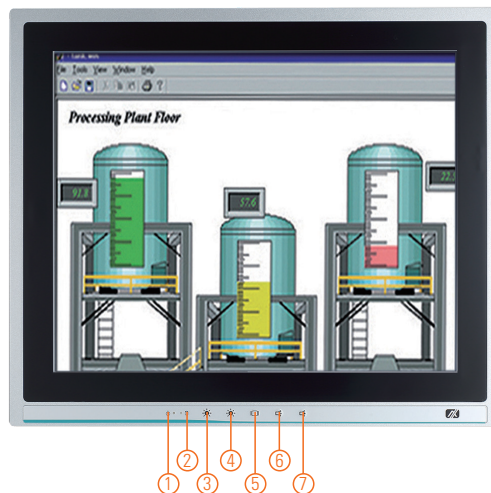
- 17" SXGA TFT LCD display
- LGA1151 socket 7th/6th gen Intel® Core™ i7/i5/i3, Celeron® & Pentium® processors
- Intel® H110 chipset
- Less screw design for easy installation
- 4 USB 3.0, 2 USB 2.0 and 4 COM
- One PCIe x4 or one PCI slot
- Built-in speakers and optional Wi-Fi 802.11 b/g/n module
- Robust IP65 compliant aluminum front bezel
- Supports 5 OSD keys in front panel



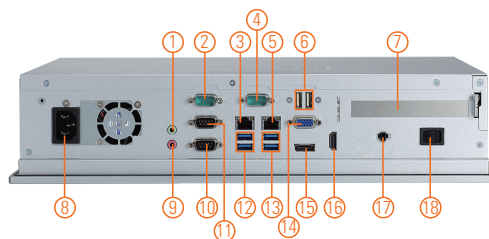
▲ Side view



▲ Back view



1. Display status LED
2. SATA status LED
3. Brightness -
4. Brightness +
5. Display monitor ON/OFF
6. Volume -
7. Volume +



- | | | |
|-----------------|---------------------------------------|-----------------------------|
| 1. 1 x Line-out | 7. PCI or PCIe x4 Card expansion slot | 13. 2 x USB 3.0 |
| 2. 1 x RS-232 | 8. AC plug | 14. 1 x VGA |
| 3. 1 x LAN | 9. 1 x Mic-in | 15. 1 x DisplayPort |
| 4. 1 x RS-232 | 10. 1 x RS-232 | 16. 1 x HDMI |
| 5. 1 x LAN | 11. 1 x RS-232/422/485 | 17. Remote switch button |
| 6. 2 x USB 2.0 | 12. 2 x USB 3.0 | 18. Switch for power on/off |

Introduction

The P1177E-500 is a multimedia 17" touch panel PC for kiosk application. It has a fashionable mechanism design and industrial-grade material front bezel which can avoid damage from chemical corrosion. To meet the demands of multimedia application, the P1177E-500 is powered by a high performance LGA1151 socket 7th/6th generation Intel® Core™ processor with the Intel® H110 chipset. It features four COM ports, two Gigabit Ethernet and up to 32GB memory of dual-channel DDR4-2133 that delivers high computing capability for high performance-demanding applications. The industrial touch panel PC is most suitable for kiosk, factory and automation.

Expandable for 1 PCIe or 1 PCI

The P1177E-500 has one PCIe x4 or one PCI slot for expansion purpose. User can easily plug in standard half-size PCI or PCIe card based on any application needs.

Speaker and WLAN Antenna Supported

The P1177E-500 is equipped with built-in speakers for multimedia applications. It also supports WLAN module antenna (optional) for wireless network connectivity.

Friendly Less Screw Design

The P1177E-500 is designed with easy of maintenance in mind. There are only four screws on the back chassis, so that technicians can quickly remove the system's back cover with minimum effort.

Specifications

Front Bezel	Aluminum w/ IP65/NEMA 4 rugged protection	
LCD Panel	Display Type	17" SXGA TFT LCD
	Brightness	250 nits
	Resolution	1280 x 1024 pixels
	Viewing Angle	160°/140°
Main System	CPU	LGA1151 socket 7th/6th gen Intel® Core™ i7/i5/i3, Celeron® & Pentium® processor
	Chipset	Intel® H110
	System Memory	2 x 288-pin DDR4-2133 Long-DIMM, up to 32GB
	BIOS	AMI UEFI BIOS
	Storage	1 x 3.5" or 1 x 2.5" SATA HDD (9.5 mm height) 2 x 2.5" SATA HDD (9.5 mm height) (optional)
	Drive	N/A
	Watchdog Timer	255 levels, 1 to 255 sec.

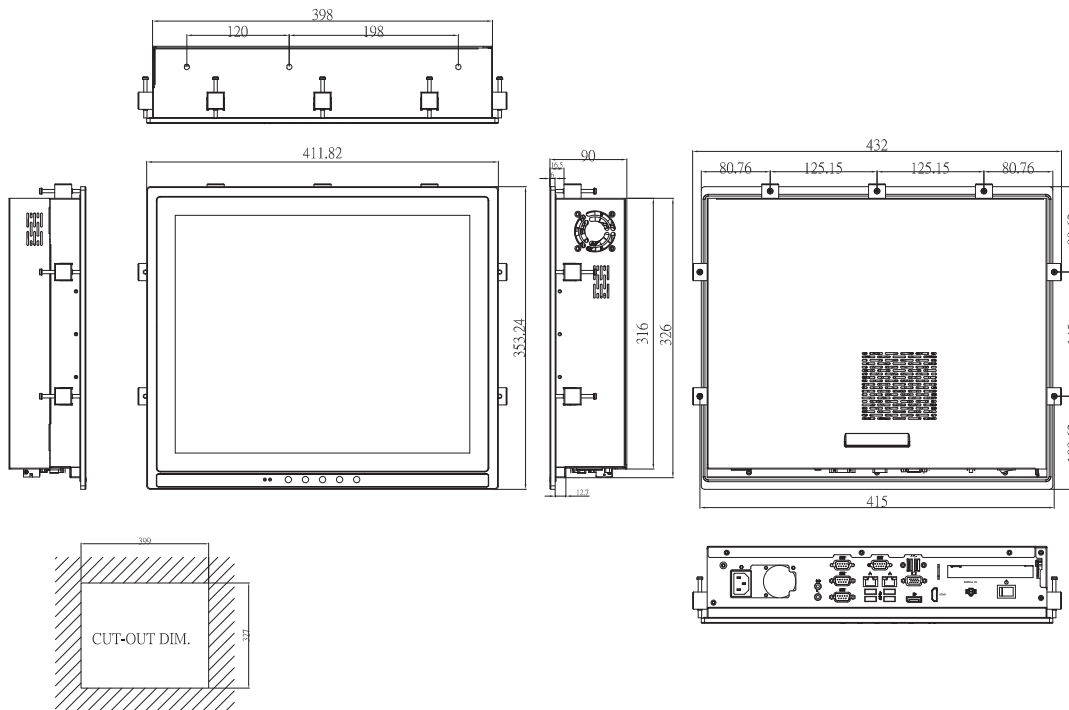
Specifications

IO Connector	3 x RS-232 1 x RS-232/422/485 1 x HDMI 1 x VGA 1 x DisplayPort 4 x USB 3.0 2 x USB 2.0 2 x 10/100/1000 Mbps Ethernet (Intel® i219-LM/i211-AT) 1 x Audio (Mic-in & Line-out) 1 x Remote power switch
TPM	N/A
Expansion Interface	1 x PCIe x4 or 1 x PCI
Touchscreen	5-wire resistive type Light transmission 79% 1 million activations (typical) at a single point
Power Supply	100 to 240 VAC, 200W
Power Consumption	143W
Dimensions	411.82 mm (16.21") (W) x 90 mm (3.54") (D) x 353.24 mm (13.91") (H)
Packing Dimensions	610 mm (24.02") (W) x 260 mm (10.24") (D) x 590 mm (23.23") (H)
Weight (net/gross)	6.4 kg (14.11 lb)/10.2 kg (22.49 lb)
Operating temperature	0°C to +50°C (+32°F to +122°F)
Relative humidity	10% to 90% @ +40°C, non-considering
Operating vibration	1.0G, 5 - 500 Hz, random
Certifications	CE

Packing list

1 x P1177E-500
1 x Panel mount kit
1 x US power cord

Dimensions



Ordering Information

P1177E-500-US w/PCIe x4 (P/N: E221177114)	17" SXGA expandable industrial touch panel computer with LGA1151 socket 7th/6th gen Intel® Core™ i7/i5/i3, Pentium® & Celeron® processor, resistive touch screen, PCIe x4 slot, 100 to 240 VAC with US power cord
P1177E-500-US w/PCI (P/N: E221177112)	17" SXGA expandable industrial touch panel computer with LGA1151 socket 7th/6th gen Intel® Core™ i7/i5/i3, Pentium® & Celeron® processor, resistive touch screen, PCI slot, 100 to 240 VAC with US power cord

* Other configuration by request

* Specification and certifications may vary based on different requirements

Optional Accessories

Wi-Fi kit	
P1157E-500 2.5" slim HDD kit supports 15"/17" touch panel PC	
881211772A0E	VESA & wall mount kit
E981604011	ATC10 (VESA arm clamp type)
E981604012	ATW10 (VESA arm wall mount)
E221177116	PPC HA741L black stand (L)
59403200B00E	Remote power switch cable (100 cm)
881211773A0E	P1177E-500 rack mount kit

Optional OS Installation

Windows® 7
Windows® 8.1
Windows® 10 IoT Enterprise

Optional OS Installation

Skylake: Windows® 7
Windows® 8.1
Windows® 10
Kaby Lake: Windows® 10

X-ON Electronics

Largest Supplier of Electrical and Electronic Components

Click to view similar products for [Panel PCs category](#):

Click to view products by [Axiomtek manufacturer](#):

Other Similar products are found below :

[GOT-5100T-832](#) [GOT-3126T-832](#) [BYARM-W071-PC](#) [STC-15WR-E3950,4G,64GB M.2](#) [STC-15WP-E3950,4G,64GB M.2](#) [POC-W152-C11D-ACE](#) [PWS-770-VMOUNT00E](#) [PWS-870-CHDC00E](#) [PWS-870-UCOVER00E](#) [TPC-31T-E3AE](#) [TREK-572-LWB7B0E](#) [ESRP-HMI-TPC1551](#) [ESRP-HMI-TPC1251](#) [ESRP-HMI-TPCB200](#) [BYARM-181-PC](#) [BYTEM-121-PC](#) [IDOOH-210-IR](#) [AFL3-W15A-BT-J1/PC/2G-R13](#) [IOVU-07F-AD-WBC-R10](#) [003002400100](#) [1050387](#) [SPTM20XP](#) [XPTB10X](#) [UTC-W101BF-ABI0E](#) [UTC-W101B-ABI0E](#) [UTC-W101B-AWI0E](#) [UTC-532C-GE](#) [UTC-532A-GE](#) [UTC-520A-PE](#) [UTC-520A-GE](#) [TREK-722R-A1E](#) [TREK-570-00A0E](#) [PWS-870-7S6G4P5F0E](#) [PPC-174T-WL-MTE](#) [110070048](#)