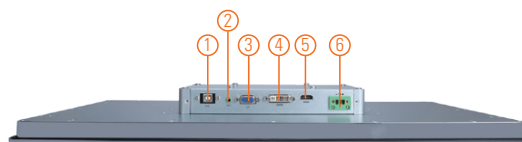
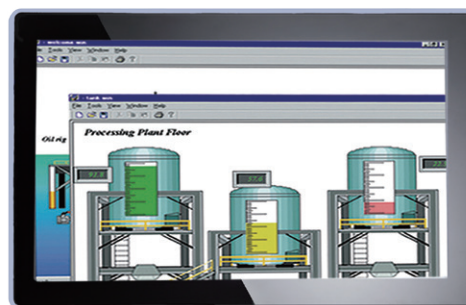
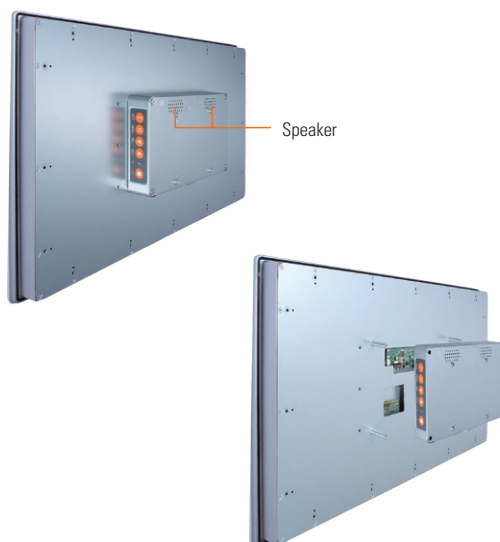


P6217W

21.5" FHD TFT Widescreen Industrial LCD Monitor

Features

- 21.5" FHD TFT 250 nits with projective capacitive multi-touch or resistive touch
- NEMA 4/12 (IP65) compliant flat panel monitor
- Supports panel mount, wall mount and VESA mount
- Full range screw-type (locked) AC-in or 12V/24V DC-in (optional)
- VGA, HDMI and DVI with multi-signal inputs



1. RS232 or USB for touch
2. Audio (Line in)
3. VGA
4. DVI-D
5. HDMI
6. Power input Terminal block or Screw type

Introduction

The P6217W is a slim-type industrial LCD monitor with flat front bezel design, which adopts 21.5-inch 250 nits full HD LCD display and supports multi-signal interfaces including DVI, VGA, S-Video, Video. Featuring IP65 (NEMA 4)-rated front bezel, screw-type adaptor plug design, and 12/24V DC-in, the 21.5-inch P6217W is designed to fit for all kinds of industrial environments. Moreover, the P6217W supports panel mount, wall mount or VESA FPMPMI (Video Electronics Standards Association Flat Panel Monitor Physical Mounting Interface) mounting. With the compact mechanism design, the P6217W can be deployed easily in any space-limited place. It is especially suitable for POI/POS, HMI and all kinds of heavy-duty industrial fields.

Specifications

Front Bezel	NEMA 4/12 (IP65)-compliant, flat front bezel	
Mounting	Panel mount, wall mount and VESA arm FPMPMI mounting (video electronics standards association Flat Panel monitor physical mounting interface)	
LCD Panel	Display	21.5" FHD TFT LCD
	Max. Resolution	1920 x 1080
	Max. Colors	16.7 M
	Active Area (mm)	476.64 x 268.11
	Pixel Pitch (mm)	0.24 x 0.24
	Response Time	18 ms
	Backlight	LED
	Backlight MTBF	50,000 hrs
	Viewing Angle (H/V)	178°/178°
	Contrast Ratio	3000 (TYP.)
Brightness (cd/m ²)	250 nits	
Display Control	OSD (on screen display)	
Display Mode	VGA 640 x 350 (70 Hz), VGA 640 x 480 (60/72/75 Hz), VGA 720 x 400 (70 Hz), SVGA 800 x 600 (60/72/75 Hz), XGA 1024 x 768 (60/72/75 Hz), WXGA 1366 x 768 (60 Hz), FHD 1920 x 1080 (60 Hz)	
Input Signal	VGA HDMI DVI (only for DVI-D) Touchscreen: USB interface	

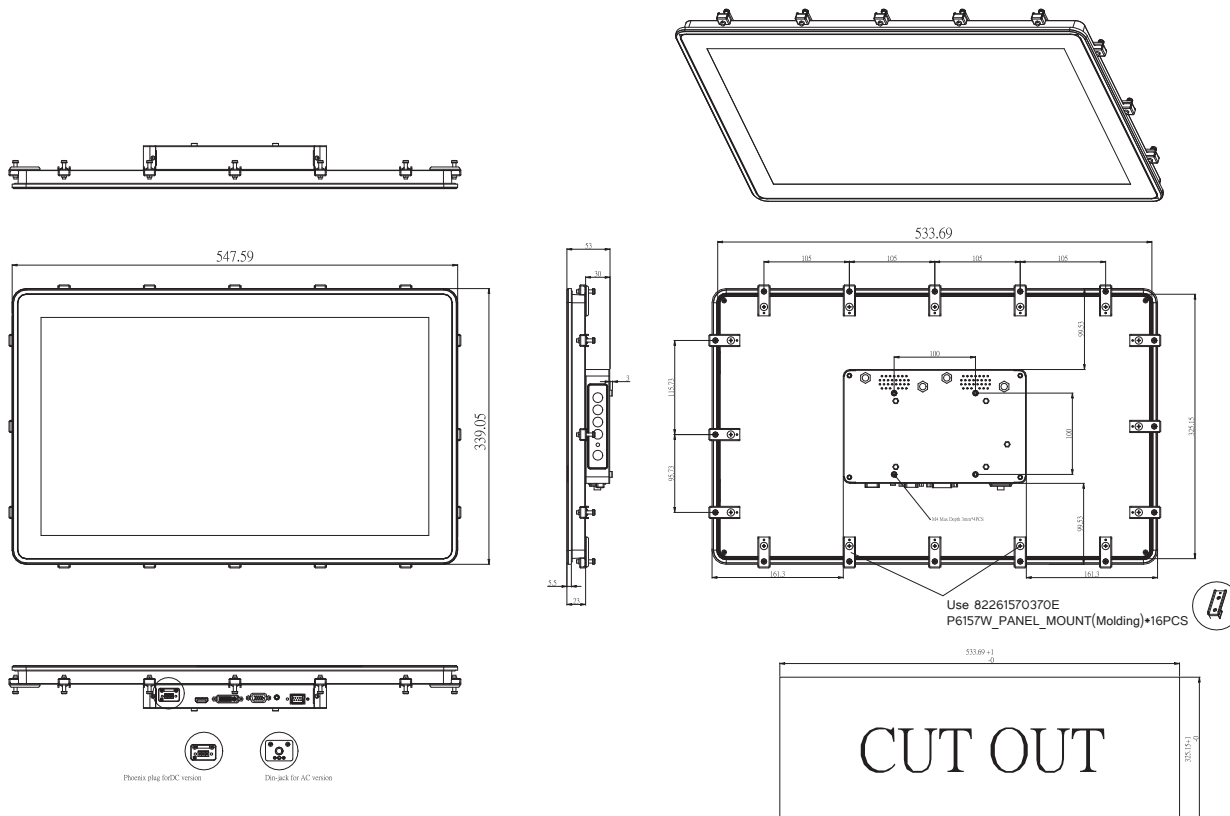
Specifications

I/O Connectors	1 x RS-232 or USB for touchscreen version 1 x Audio (Line-in) 1 x VGA 1 x DVI-D 1 x HDMI 1 x DVI 1 x Power input with Terminal block(DC Version) or Screw type connector(AC version)
Audio	2 x Speaker
Power Supply	DC version: 24VDC AC version: 100 - 240VAC-DC, 36W power adapter
Power Consumption	26W
Touchscreen	Projective capacitive multi-touch or 5-wire resistive touch
Dimensions	547.59 mm (21.56") (W) x 339.05 mm (13.34") (D) x 53 mm (2.09") (H)
Packing Dimensions	700 mm (27.56") (W) x 185 mm (7.28") (D) x 510 mm (20.07") (H)
Weight (net/gross)	6.42 kg (14.15 lb)/7.78 kg (17.15 lb)
Operating Temperature	0°C to +45°C (+32°F to +113°F)
Relative Humidity	20% to 90% @ +40°C, non-condensing
Certifications	CE

Packing List

- 1 x P6217W unit
- 1 x VGA cable
- 1 x USB cable (for resistive/capacitive touch screen only)
- 1 x Audio cable
- 1 x Adapter (AC Version only)
- 1 x Power cord (AC Version only)
- 1 x 3-PIN Terminal block (DC Version only)

Dimensions



Ordering Information

P6217W	
P6217WPC-AC-U-US-EU (P/N: E226217100)	21.5" Industrial Monitor with Capacitive Touch Screen, AC Version
P6217WPG-AC-US-EU (P/N: E226217101)	21.5" Industrial Monitor without Touch Screen, AC Version
P6217WPR-AC-U-US (P/N: E226217105)	21.5" Industrial Monitor with Resistive Touch Screen, AC Version
P6217WPC-24VDC-U (P/N: E226217102)	21.5" Industrial Monitor with Capacitive Touch Screen, 24VDC Version
P6217WPG-24VDC (P/N: E226217103)	21.5" Industrial Monitor without Touch Screen, 24VDC Version
P6217WPR-24VDC-U (P/N: E226217104)	21.5" Industrial Monitor with Resistive Touch Screen, 24VDC Version

- * Other configuration by request
- * Specification and certifications may vary based on different requirements

Optional Accessories

5946L203800E	HDMI cable
59461713400E	DVI-D cable
881262170A0E	Panel mount kit
881231770A0E	Wall mount kit
E221177116	Desktop stand for 15.6" to 21.5"

X-ON Electronics

Largest Supplier of Electrical and Electronic Components

Click to view similar products for [Display Modules](#) category:

Click to view products by [Axiomtek](#) manufacturer:

Other Similar products are found below :

[P6153-PR](#) [TDP0700T800480PCAP](#) [P6171DPR-DC-RS](#) [P6171DPR-DC-U](#) [MIKROMEDIA 4 FOR STM32F4 CAPACITIVE FPI](#)
[MIKROMEDIA 3 FOR STM32F4 CAPACITIVE FPI](#) [TN0216ANVNANN-GN00](#) [TN0104ANVAANN-GN00](#) [TN0181ANVNANN-GN00](#)
[MIKROMEDIA 5 FOR TIVA CAPACITIVE](#) [MIKROMEDIA 4 FOR TIVA CAPACITIVE](#) [MIKROMEDIA 4 FOR PIC32MZ CAPACITIVE](#)
[RVT43ULFNWC03 V4](#) [SM-RVT101HVBFWCA0](#) [SM-RVT101HVBNWCA0](#) [SM-RVT35HHBFWCA0](#) [SM-RVT35HHBNWCA0](#) [SM-](#)
[RVT43HLBFWCA0](#) [SM-RVT43HLBNWCA0](#) [SM-RVT50HQBNWCA0](#) [SM-RVT70HSBFWCA0](#) [SM-RVT70HSBNWCA0](#) [PIM579](#)
[1215686](#) [PIM543](#) [DFR0678](#) [P6191PR-DC-U-V3](#) [16381](#) [17916](#) [18205](#) [21229](#) [18625](#) [12885](#) [19885](#) [11769](#) [MIKROMEDIA FOR DSPIC33](#)
[MIKROMEDIA FOR PIC24](#) [MIKROMEDIA FOR PIC32](#) [MIKROMEDIA FOR STELLARIS M3](#) [MIKROMEDIA HMI 3.5 RES](#)
[MIKROMEDIA HMI 5](#) [MIKROMEDIA PLUS FOR FT90X](#) [MIKROMEDIA PLUS FOR PIC32MX7 SHIELD](#) [MIKROMEDIA PROTO](#)
[SHIELD](#) [14628](#) [MIKROMEDIA 5 FOR TIVA](#) [MIKROMEDIA 5 FOR TIVA SHIELD](#) [MIKROMEDIA 7 FOR STM32F4](#) [MIKROMEDIA](#)
[CONNECT SHIELD](#) [MIKROMEDIA FOR ARM](#)