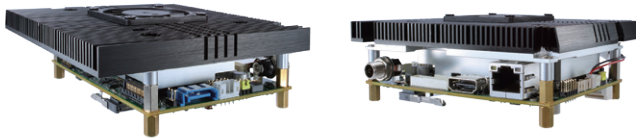


# PICO512

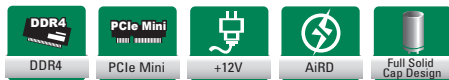
Pico-ITX SBC with 7th Gen Intel® Core™ i7/i5/i3 & Celeron® Processor, HDMI/LVDS and GbE LAN

## Features

- 7th gen Intel® Core™ i7/i5/i3 & Celeron® processor
- 1 DDR4 SO-DIMM, up to 16GB
- PCI Express Mini Card slot with mSATA supported
- Intel® AMT 11 supported



▲ Assembly view



### Core System

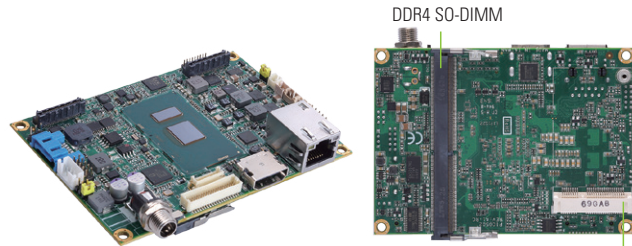
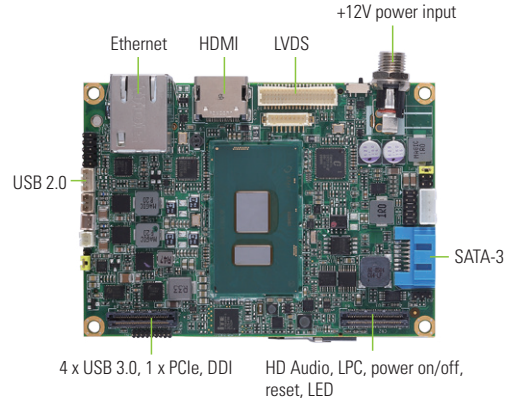
CPU	7th gen Intel® i7/i5/i3 & Celeron® processor onboard
System Memory	1 x 260-pin DDR4-2133 SO-DIMM, up to 16GB
Chipset	N/A
BIOS	AMI
SSD	N/A
Watchdog Timer	65535 levels, 1 ~ 65535 sec.
Expansion Interface	1 x full-size PCI Express Mini Card slot with mSATA 1 x PCIe x1, 1 x LPC, 1 x DDI, 4 x USB 3.0, 1 x HD audio and 1 x SMBus (through expansion connector)
Battery Lithium	Lithium 3V/220mAh
Power Input	DC Jack +12V DC-in only AT Auto Power On function supported
Power Requirements	Intel® i7-7600U @ 2.8 GHz 16GB DDR4 max. RMS. +12V @ 2.5A Intel® i5-7300U @ 2.6 GHz 16GB DDR4 max. RMS. +12V @ 2.4A Intel® i3-7100U @ 2.4 GHz 16GB DDR4 max. RMS. +12V @ 2.2A Intel® Celeron®-3965U @ 2.2 GHz 16GB DDR4 max. RMS. +12V @ 1.7A
Size	100 x 72 mm
Board Thickness	1.6 mm
Temperature	-20°C ~ +70°C (-4°F ~ +158°F), operation
Relative Humidity	10% ~ 95% relative humidity, non-condensing

### I/O

MIO	N/A
SATA	1 x SATA-600
Hardware Monitoring	Detect CPU/system temperature, voltage and fan speed
Ethernet	1 port 10/100/1000 Mbps supports Wake-on-LAN, PXE Boot ROM with Intel® i219LM
Audio	N/A
USB	1 x USB 2.0
SMBus/I <sup>2</sup> C	Yes, for advanced monitoring/control
Digital I/O	8 channels in/out programmable
TPM	ST ST33TPM12LPC with TPM 1.2 compliant

### Display

Chipset	Intel® integrated Gfx graphic engine
Memory Size	Share system memory
Display Interface	1 x HDMI 1 x LVDS; 18/24-bit single/dual channel



▲ Side view

▲ Rear view

Full-size PCI Express Mini Card slot with mSATA supported

### Packing List

Standard		
Quick installation guide, user's manual/utility CD and accessories		
Accessories		
Part Number	Description	Qty
59403208000E	SATA cable	1
594P8800600E	SATA power cable	1
59190400500E	Fan cable	1
594P8802810E	USB cable	1
5078H500000E	Heatspreader	1
5078H500100E	Cooler	1

### Ordering Information

Standard	
PICO512HG-i7-7600U (P/N: E38H512100)	Pico-ITX SBC with Intel® Core™ i7-7600U processor (2.8 ~ 3.9 GHz, 4MB cache, 15W), HDMI/LVDS, 1 GbE LAN, 1 USB
PICO512HG-i5-7300U (P/N: E38H512101)	Pico-ITX SBC with Intel® Core™ i5-7300U processor (2.6 ~ 3.5 GHz, 3MB cache, 15W), HDMI/LVDS, 1 GbE LAN, 1 USB
PICO512HG-i3-7100U (P/N: E38H512102)	Pico-ITX SBC with Intel® Core™ i3-7100U processor (2.4 GHz, 3MB cache, 15W), HDMI/LVDS, 1 GbE LAN, 1 USB
PICO512HG-Celeron-3965U (P/N: E38H512103)	Pico-ITX SBC with Intel® Celeron® 3965U processor (2.2 GHz, 2MB cache, 15W), HDMI/LVDS, 1 GbE LAN, 1 USB
Optional	
AX93A00 (P/N: E393A00100)	I/O board for 1 x RS-232/422/485, 1 x RS-232, 4 x USB 3.0, 1 x VGA, 1 x Audio
AX93A01 (P/N: E393A01100)	I/O board for 1 x RS-232/422/485, 1 x RS-232, 4 x USB 3.0, 1 x HDMI, 1 x GbE LAN
AX93A02 (P/N: E393A02100)	I/O board for 1 x RS-232/422/485, 1 x RS-232, 4 x USB 3.0, 1 x Audio
AX93A09 (P/N: E393A09100)	I/O board for 1 x RS-232/422/485, 1 x RS-232, 4 x USB 2.0, 1 x Audio



## X-ON Electronics

Largest Supplier of Electrical and Electronic Components

*Click to view similar products for [Single Board Computers](#) category:*

*Click to view products by [Axiomtek](#) manufacturer:*

Other Similar products are found below :

[MANO882VPGGA-H81](#) [SSD3200W-S-SLC-INN 20-101-0738](#) [MVME61006E-2173R](#) [SHB230DGGA-RC](#) [IMB210VGGA](#) [IB915F-3955](#)  
[MI958F-16C](#) [S2600WFT](#) [S2600STB](#) [BBS2600BPS](#) [BLKNUC7I3DNHNC1978015](#) [DEV-17745](#) [BEAGLEBOARD POCKET](#) [BPI-M5](#)  
[MICROSOM I2 + WIFI/BT](#) [HUMMINGBOARD-I2EX BASE + WIFI/BT](#) [HUMMINGBOARD-I4 PRO + WIFI/BT](#) [VAB-600-B](#) [RT5350F-](#)  
[OLINUXINO-EVB](#) [MITX-440-DVI-2E](#) [ATCA-7365-D-24GB](#) [NITX-315-DEVKIT](#) [A13-SOM-512](#) [NITX-315](#) [BANANA PI BPI-M1+](#) [A13-](#)  
[SOM-WIFI-4GB](#) [AM3359-SOM-EVB-IND](#) [UPS-APLC2-A10-0432](#) [DFR0419](#) [UPS-APLP4-A10-0864](#) [UPS-APLP4-A10-0432](#) [UPS-APLP4-](#)  
[A10-08128](#) [MI977F-Q27](#) [BBBLUE](#) [IB811F-I30](#) [DFR0470-ENT](#) [Nit6Q\\_i](#) [M2M \(TELIT\)](#) [RELAY PROFESSIONAL](#) [GCS22.2.080.2.2.I](#)  
[GCS22.8.100.4.2.I](#) [GLS11.2.053.2.2.E](#) [A20-OLINUXINO-LIME-E16GS16M](#) [A20-OLINUXINO-LIME-S16M](#) [A20-OLINUXINO-LIME2-](#)  
[E16GS16M](#) [A20-OLINUXINO-MICRO-E16GS16M](#) [A20-OLINUXINO-MICRO-S16M](#) [BANANA PI BPI-W2](#)