



CT002 Overview

IQS127, IQS128, IQS211A, IQS227AS, IQS228AS, IQS231A programming socket

The CT002 is indented for small scale IC programming prior to assembly, where on board programming is not possible or unwanted.

The following Azoteq IC's can be programmed with this socket:

- IQS127
- IQS128
- IQS211A
- IQS227AS
- IQS228AS
- IQS231A

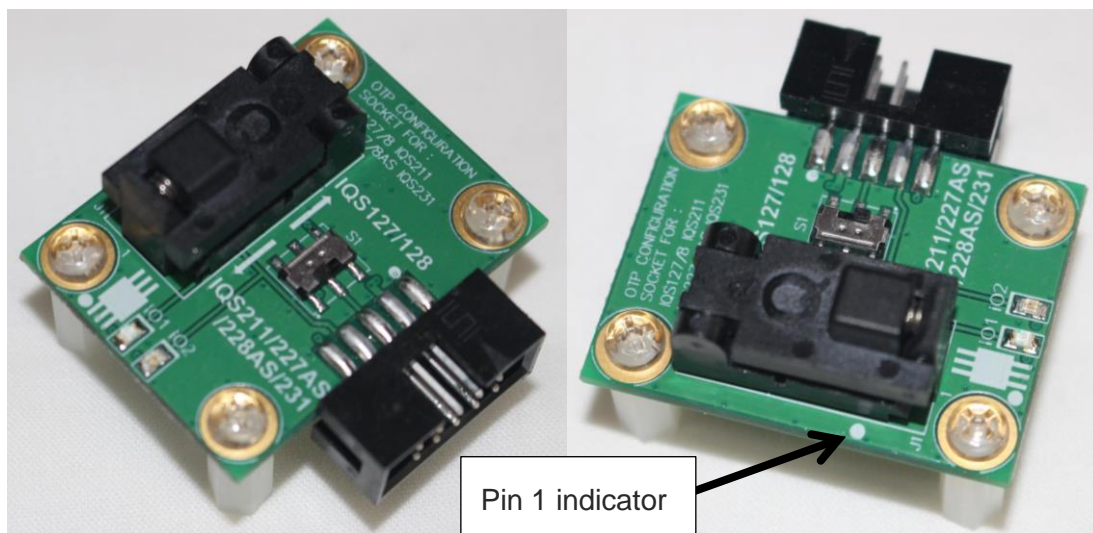
This will only be for the TSOT23-6 package type of these IC's.

Please note: CT210/A required for programming, not included in CT002 EV-Kit.

1 Hardware Set-up

Connect CT210/A to PC with USB data cable.

Connect CT210/A to CT002 with ribbon cable.



Please note the Pin 1 indicator: Ensure IC is placed in socket with Indicator in the Left Bottom position.

Move switch S1 to the upwards position for programming:

- IQS127
- IQS128

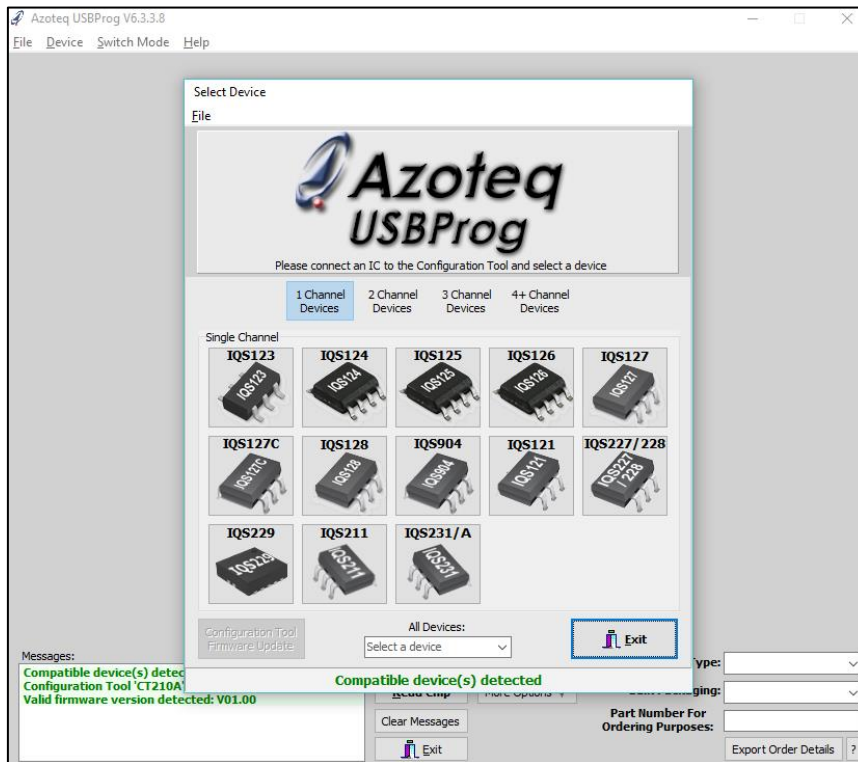
Move switch S1 to the downwards position for programming:

- IQS211A
- IQS227AS
- IQS228AS
- IQS231A



2 Software Set-up:

Download and install USBProg software: <http://www.azoteq.com/design/software.html>



Select the device you would like to program.
Choose the settings that must be on the device.
Click Program Chip.

Please note: This is OTP (One Time Programmable) devices, thus once a setting is programmed on the device, the setting cannot be erased.

X-ON Electronics

Largest Supplier of Electrical and Electronic Components

Click to view similar products for [Programmings - Universal & Memory Based](#) category:

Click to view products by [Azoteq](#) manufacturer:

Other Similar products are found below :

[PRG833801-4B](#) [DG-ACC-LX-DVD](#) [DSC-PROG-TIMEFLASH-2520](#) [4D-UPA](#) [DC1508B-A](#) [DC2277A](#) [AS5XXX-EK-USB-PB](#) [DC2450A-B](#)
[CT002-S](#) [UMFT4222PROG-IC](#) [PDS4102-PM300N](#) [DS9122P#](#) [DS9488-GP8#](#) [LXM9518](#) [SUPERPRO 6100N](#) [SUPERPRO 610P](#) [AS5000](#)
[PROGRAMMER](#) [AS5XXX-EK-PB](#) [844USB](#) [866C](#) [CHIPMAX2](#) [PROMAX 2 -4G](#) [TOPMAX III](#) [UMFT4222PROG](#)