



IQS620AEV02 Overview

Combination sensor with dual channel capacitive proximity/touch, Hall-effect sensor and inductive sensing

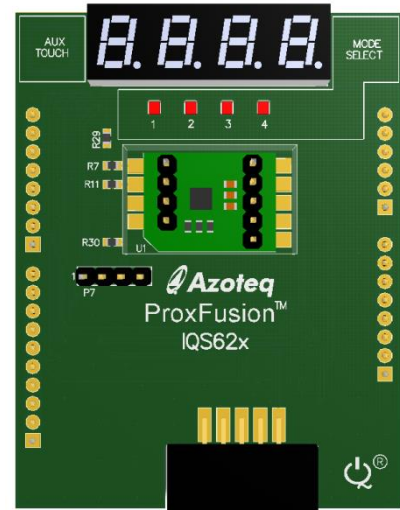
The IQS620A ProxFusion® IC is a multifunctional capacitance, Hall-effect & inductance sensor designed for applications where any or all of the technologies may be required. The IQS620A is an ultra-low power solution designed for short or long term activations through any of the sensing channels. The IQS620A is fully I²C compatible and can be configured to output main trigger events on GPIOs.

EV-Kit Overview

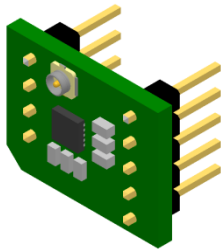
- Inductive sensing
- Hall-effect sensing
- Capacitive sensing

Evaluation Modes

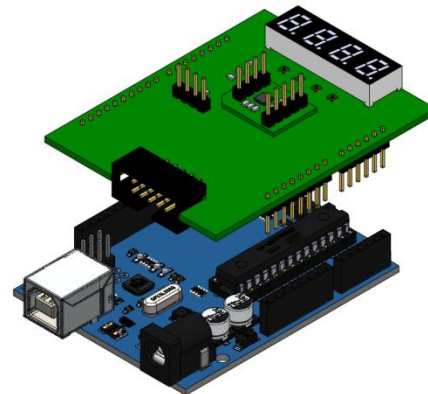
- Connect to PC GUI via CT210A USB Dongle¹
- When connected to CT210A use 3.3V (default) only²
 - Raw info displayed in GUI
- Please ensure Shield Board³ is unplugged from Arduino Uno / ST Nucleo when connected to CT210A
- Plug into Arduino Uno¹ or ST Nucleo¹
 - Sensor info displayed on 7-segment
 - Open source code for custom development
- Embed the small module PCB (stamp) into custom design & interface to host MCU
(Additional modules sold separately as IQS620AEV01)



IQS620AEV02 Shield Board



Detachable Stamp Module



IQS620A Shield + Arduino Uno¹

Applications

- Mobile electronics (phones/tablets)
- SAR safety requirements for laptops, tablets and phones
- Wearable devices, on ear detection
- White goods and appliances
- Human Interface Devices
- Proximity activated backlighting
- Applications with long-term activation
- Aftermarket automotive⁴

¹ Sold separately

² 1.8V not supported on Shield Board due to diode protection

³ Shield Board does not support programming

⁴ The part is not automotive qualified

X-ON Electronics

Largest Supplier of Electrical and Electronic Components

Click to view similar products for [Touch Sensor Development Tools](#) category:

Click to view products by [Azoteq](#) manufacturer:

Other Similar products are found below :

[ATMXT1066T2-DEV-PCB](#) [ATMXT336UDEVPCB](#) [LC717A00ARGEVK](#) [CY3280-CPM1](#) [1374](#) [MIKROE-1906](#) [1602](#) [SEN0164](#) [1982](#)
[STEVAL-PCC009V3](#) [ATQT1-XPRO](#) [ATQT2-XPRO](#) [ATQT3-XPRO](#) [ATQT6-XPRO](#) [2340](#) [DM160221](#) [DM160229](#) [DM160222](#) [STM8T143-](#)
[EVAL](#) [IS31SE5100-QFLS2-EB](#) [IQS231AEV02-S](#) [IQS550EV02-S](#) [ATQT5-XPRO](#) [DFR0129](#) [SEN0104](#) [SEN0170](#) [DM320108-BNDL](#)
[SLEXP8019A](#) [SLEXP8018A](#) [2216](#) [LDC2114EVM](#) [IQS572EV02](#) [SX9310MINIEVKA](#) [4D TOUCH-01](#) [1375](#) [DFR0386](#) [SEN0186](#) [SEN0148](#)
[DK-000013-03](#) [ROB0103](#) [cs-useful-01](#) [DFR0385](#) [SEN0184](#) [SX8651EVKA](#) [1362](#) [1580](#) [2024](#) [3575](#) [4830](#) [AS8579-TS_EK_DB](#)