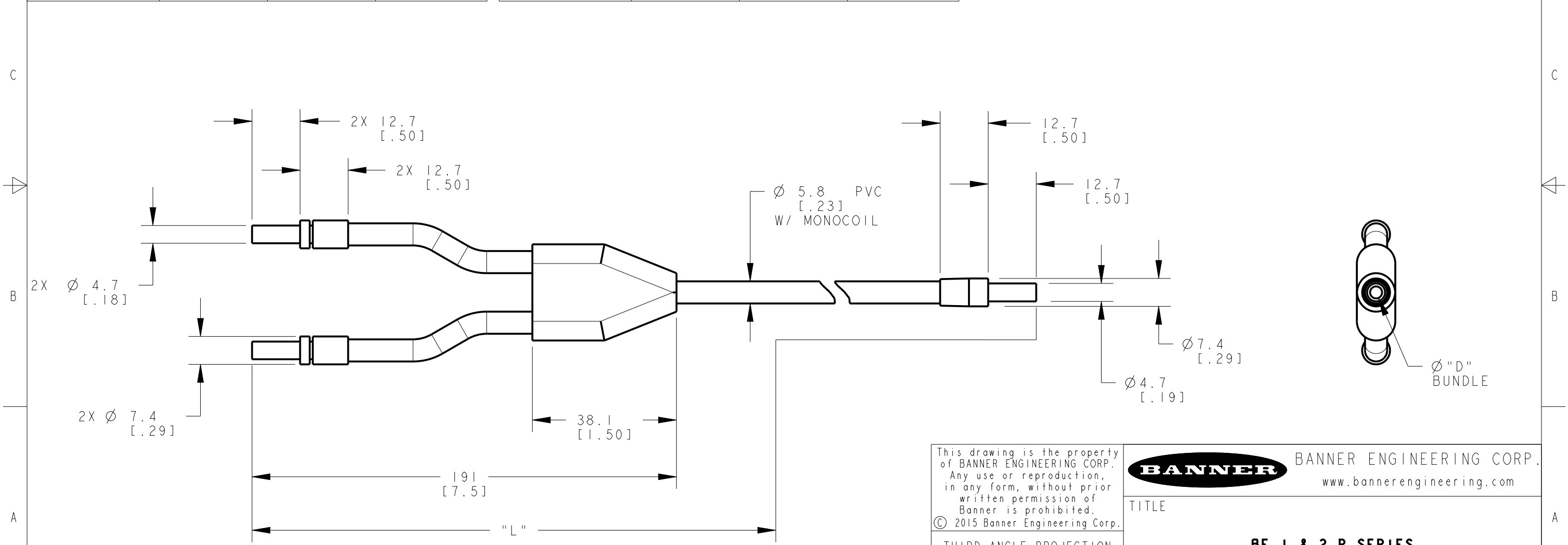


8	7	6	5	4	3	2	1
MODEL NO.	"L"	"D"	P/N	MODEL NO.	"L"	"D"	P/N
BF14P	48	.062	24619	BF11P	12	.062	20323
BF216	72	.062	24620	BF13P	36	.062	17226
BF18P	96	.062	24621	BF21P	12	.125	20418
BF15P	60	.062	24128	BF22P	24	.125	21114
BF215P	180	.125	23866	BF24P	48	.125	20137
BF23.5P	42	.125	21848	BF25P	60	.125	20175
BF210P	120	.125	21713	BF26P	72	.125	17909
BF28P	96	.125	21300	BF27P	84	.125	20903
BF29P	108	.125	21301	BF23P	36	.125	17233

NOTES:

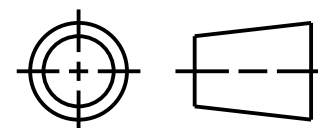
- CABLES LONGER THAN 30 FEET IN LENGTH ARE CONSTRUCTED FROM TWO SHORTER LENGTHS OF SHEATHING AND FUSED WITH A STAINLESS JUNCTION COVERED WITH SHRINK TUBING (INCREASING THE DIAMETER BY APPROXIMATELY .080").



- NOTES:
- ALL DIMENSIONS ARE MILLIMETERS [INCHES] UNLESS OTHERWISE NOTED.
 - REFER TO "www.bannerengineering.com" FOR ADDITIONAL DATA AND SPECIFICATIONS.

This drawing is the property of BANNER ENGINEERING CORP. Any use or reproduction, in any form, without prior written permission of Banner is prohibited. © 2015 Banner Engineering Corp.

THIRD ANGLE PROJECTION



BANNER BANNER ENGINEERING CORP. www.bannerengineering.com	
TITLE BF 1 & 2 P SERIES	
SIZE B	DRAWING NO. 193324
SCALE 1:1	REV. A
SHEET 1 OF 1	

X-ON Electronics

Largest Supplier of Electrical and Electronic Components

Click to view similar products for [Fibre Optic Sensors](#) category:

Click to view products by [Banner](#) manufacturer:

Other Similar products are found below :

[BTA23S](#) [IAT23S](#) [D12EN6FP](#) [BA23S](#) [BF13S](#) [BT21S](#) [IAT28S](#) [IT26S](#) [E32L56E1](#) [E32L56E2](#) [D12E2N6FP](#) [D12DAB6FPQ](#) [D12EP6FV](#)
[W/30](#) [PBT46UHT1](#) [D12SN6FVY](#) [FL-DR90W](#) [CCS-NFCB2-CC-3](#) [CCS-LFV3-35RD](#) [CCS-QBL-120120SW](#) [E3Z-T81-M1TJ-1 0.3M](#) [S7-4-](#)
[E-P](#) [CN-14A-R-C2](#) [CN-73-C1](#) [LL3-TB01](#) [FD-42G](#) [E32-D11L 2M](#) [E32-T11L 2M](#) [1830L3500MSC](#) [FX-101-CC2](#) [FX-101P](#) [FX-101P-CC2](#)
[FX-101P-Z](#) [FX-102-CC2](#) [D11SN6FP](#) [PBCL22T](#) [SM312FP1H](#) [FT-420-10](#) [WLL180T-P432](#) [FD-31](#) [FD-62](#) [E3X-NA41 2M](#) [FT-F93](#) [FX-](#)
[102P-CC2](#) [FX-502P](#) [FX-505P-C2](#) [E32-D32 2M](#) [CN-73-C2](#) [CN-24A-C5](#) [CN-24A-C2](#) [CN-14A-R-C5](#)