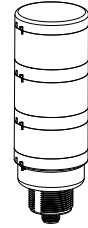


Datasheet



For complete technical information about this product, including installation instructions, application requirements and guidelines, technical specifications, dimensions, and accessories, please refer to the manual at www.bannerengineering.com. Scan the QR code or follow the link below to go to the product series web page, and search for the TL70 Basic Modular Tower Light manual, p/n 233350, in the Downloads. Use of this document assumes familiarity with pertinent industry standards and practices.
<https://www.bannerengineering.com/qr/LITOWERTL70BASIC>



Wiring

Refer to the manual for bimodal wiring.

Diagram	5-Pin Pinout	8-Pin Pinout
<p>Position 5 Position 4 Position 3 Position 2 Position 1</p>	<p>1 = Brown (Position 2) 2 = White (Position 3) 3 = Blue (Ground) 4 = Black (Position 1) 5 = Gray (Position 4)</p>	<p>1 = White (Position 3) 2 = Brown (Position 2) 3 = Green (Not used) 4 = Yellow (Position 5) 5 = Gray (Position 4) 6 = Pink (Position 1) 7 = Blue (Ground) 8 = Red (Not used)</p>

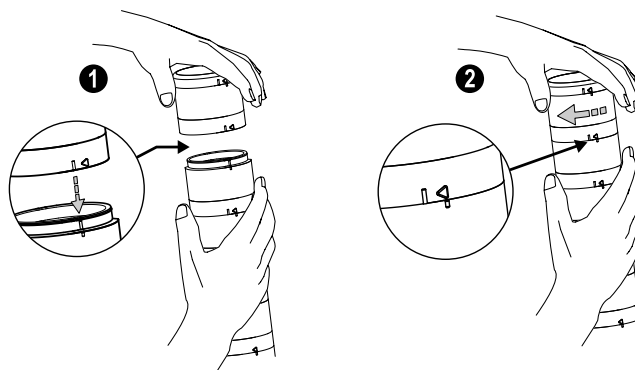
Flash/Pulse Control

The DIP switch is located in the TL70B base segment. DIP switch numbers 1-5 correlate to Positions 1-5 (see diagram above). DIP switch number 7 sets a global speed for the flashing function. DIP switch numbers 6 and 8 are not used.

Diagram	DIP Switch Number	Function	Light Segment		Audible Segment	
			On	Off	On	Off
	1-5	Toggle Flash ON/OFF	Flash	Steady	Pulse	Continuous
	7	Toggle Flash Speed	1.5 Hz	3 Hz	1.5 Hz	3 Hz

Assembly

Up to five segments only



Models

Base Models

B-TL70B-Q5
B-TL70B-Q8

Pre-Assembled Models

TL70B-GYRQ
TL70B-GYRAQ
TL70B-BGYRQ
TL70B-BGYRAQ
TL70B-WBGYRQ

Segment Models

SG-TL70B-G
SG-TL70B-Y
SG-TL70B-R
SG-TL70B-B
SG-TL70B-W
SG-TL70B-O
SG-TL70B-V
SG-TL70B-A

Specifications and Certifications

Supply Voltage and Current

12 V DC to 30 V DC

Supply Current (max.)

Light Segment: 120 mA to 205 mA per segment
Audible: 35 mA

Operating Temperature

-40 °C to +50 °C (-40 °F to +122 °F)

Environmental Rating

IP65

Audible Intensity

91 dB to 104 dB

Certifications



Key Accessories

Refer to the manual for additional accessories and complete information.

MQDC1-501.5

Straight 5-pin threaded M12 cordset—single ended

MQDC2S-806

Straight 8-pin threaded M12 cordset with open-shield—single ended

SMB30A

30 mm right-angle bracket with curved slot for versatile orientation

SMBAMS30P

30 mm flat bracket with curved slot for versatile orientation

LMBE12RA35

Right-angle mounting bracket with 35 mm offset and ½-14 NPSM nut for stand-off pipes

SOP-E12-150A

Elevated-use ½ in-14 NPSM stand-off pipe

SA-F12

Mounting base for ½-14 NPSM stand-off pipes (mounting hardware included)

SA-M30

Stand-off pipe adapter/cover for M30 threads (mounting hardware included)

SA-E12M30

Mounting base adapter/cover for ½-14 NPSM stand-off pipes (mounting hardware included)

Banner Engineering Corp Limited Warranty

Banner Engineering Corp. warrants its products to be free from defects in material and workmanship for one year following the date of shipment. Banner Engineering Corp. will repair or replace, free of charge, any product of its manufacture which, at the time it is returned to the factory, is found to have been defective during the warranty period. This warranty does not cover damage or liability for misuse, abuse, or the improper application or installation of the Banner product.

THIS LIMITED WARRANTY IS EXCLUSIVE AND IN LIEU OF ALL OTHER WARRANTIES WHETHER EXPRESS OR IMPLIED (INCLUDING, WITHOUT LIMITATION, ANY WARRANTY OF MERCHANTABILITY OR FITNESS FOR A PARTICULAR PURPOSE), AND WHETHER ARISING UNDER COURSE OF PERFORMANCE, COURSE OF DEALING OR TRADE USAGE.

This Warranty is exclusive and limited to repair or, at the discretion of Banner Engineering Corp., replacement. **IN NO EVENT SHALL BANNER ENGINEERING CORP. BE LIABLE TO BUYER OR ANY OTHER PERSON OR ENTITY FOR ANY EXTRA COSTS, EXPENSES, LOSSES, LOSS OF PROFITS, OR ANY INCIDENTAL, CONSEQUENTIAL OR SPECIAL DAMAGES RESULTING FROM ANY PRODUCT DEFECT OR FROM THE USE OR INABILITY TO USE THE PRODUCT, WHETHER ARISING IN CONTRACT OR WARRANTY, STATUTE, TORT, STRICT LIABILITY, NEGLIGENCE, OR OTHERWISE.**

Banner Engineering Corp. reserves the right to change, modify or improve the design of the product without assuming any obligations or liabilities relating to any product previously manufactured by Banner Engineering Corp. Any misuse, abuse, or improper application or installation of this product or use of the product for personal protection applications when the product is identified as not intended for such purposes will void the product warranty. Any modifications to this product without prior express approval by Banner Engineering Corp will void the product warranties. All specifications published in this document are subject to change; Banner reserves the right to modify product specifications or update documentation at any time. Specifications and product information in English supersede that which is provided in any other language. For the most recent version of any documentation, refer to: www.bannerengineering.com.

For patent information, see www.bannerengineering.com/patents.

X-ON Electronics

Largest Supplier of Electrical and Electronic Components

Click to view similar products for [Tower Lights](#) category:

Click to view products by [Banner manufacturer](#):

Other Similar products are found below :

[5125](#) [TL50BGYRQ](#) [TL50GYRAQ](#) [LD6A-3DQB-RYG](#) [LD6A-3DZQB-RYG](#) [790520900](#) [LD6A-3WQB-RYG](#) [LD6A-0PZQB](#) [2994](#)
[TL50HRQP](#) [4000-76501-5310000](#) [TL50GRAQ](#) [TL50GYRQ](#) [TL50GYR](#) [LD6A-3WZQB-RYG](#) [TL70GYRQ](#) [C30-Q01](#) [HD90-Q01](#) [HD90-](#)
[Q31](#) [B-TL70B-Q5](#) [B-TL70B-Q8](#) [LCA130T3-TL50GYR300Q](#) [LCA130T3-TL50GYR600Q](#) [LCA130T3-TL50GYR900Q](#) [LCA130T3-](#)
[TL50GYRAJ300Q](#) [LCA130T3-TL50GYRAJ600Q](#) [LCA130T3-TL50GYRAJ900Q](#) [LCA130T4-TL50BGYR300Q](#) [LCA130T4-](#)
[TL50BGYR600Q](#) [LCA130T4-TL50BGYR900Q](#) [LCA130T4-TL50BGYRAJ300Q](#) [LCA130T4-TL50BGYRAJ600Q](#) [LCA130T4-](#)
[TL50BGYRAJ900Q](#) [LCA130T4-TL50GYRA300Q](#) [LCA130T4-TL50GYRA600Q](#) [LCA130T4-TL50GYRA900Q](#) [LCA130T5-](#)
[TL50BGYRA300Q](#) [LCA130T5-TL50BGYRA600Q](#) [LCA130T5-TL50BGYRA900Q](#) [SG-TL70-A](#) [SG-TL70B-A](#) [SG-TL70B-B](#) [SG-TL70B-G](#)
[SG-TL70B-R](#) [SG-TL70B-W](#) [SG-TL70B-Y](#) [SG-TL70-W](#) [SG-TL70-G](#) [SG-TL70-O](#) [SG-TL70-Y](#)