

承 認 書

SPECIFICATION FOR APPROVAL

CUSTOMER:	
CUSTOMER P/N	
PART NO:	
DESCRIPTION:	SMD POWER INDUCTORS
PRODUCTS NO:	BCRH8D43-100N
PRODUCTS REV:	1
DATE:	2018-6-11

PURCHASER CONFIRMED		
REMARK		

PROVIDER ENGINEER DEPT.		
APPROVAL BY	CHECK BY	DRAWN BY
		<i>chenlinli</i>



TAIPEI OFFICE

誠陽實業有限公司

TAIWAN CHENG YANG COMPONENT CORP

2F-1, NO. 176, Chine-Yi Road., Zhonghe District, New Taipei City, TAIWAN(R.O.C)

新北市中和區建一路176號2樓之一

POSTAL CODE: 23500

TEL NO.:+886-2- 8228-0930 FAX NO.:+886-2-8228-0929 E-mail:h21803@ms29.hinet.net



CHINA FACTORY

寶誠電子有限公司

ZHUHAI BAO CHENG ELECTRONICSCO.,LTD

Guan Tang Industrial Park, Tang Jia Wan Town, Zhuhai City, Guangdong Province, CHINA

中國廣東省珠海市塘家灣鎮官塘工業區

POSTAL CODE: 519085

TEL NO:86-756-3383187 FAX NO:86-756-3380704 E-mail: baocheng@baocheng.biz



CHINA FACTORY

昆山誠陽電子有限公司

KUNSHAN CHENG YANG ELECTRONICSCO.,LTDP

Qiang-An Road., High-Tech. Industrial Park, Kunshan City, Jiangsu Province, China

江蘇省昆山市高科技工業園區強安路38號

POSTAL CODE: 215300

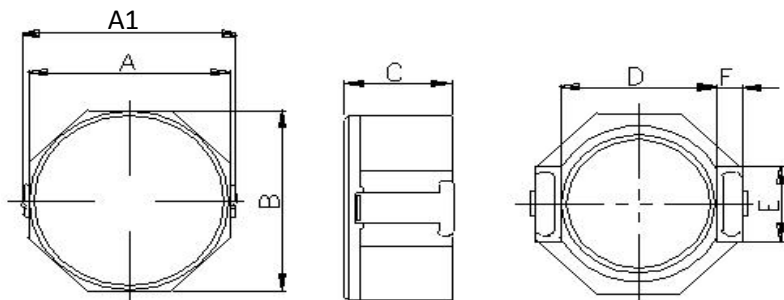
TEL NO:86-512-57823500 FAX NO:86-512-57823503 E-mail: kscy@taiwan-chengyang.com.tw

TEST DATA

DIMENSION&ELECTRIC CHARACTER

CUSTOMER:		PART NO.:	
DESCRIPTION:	SMD INDUCTOR	SERIES NO:	BCRH8D43-100N

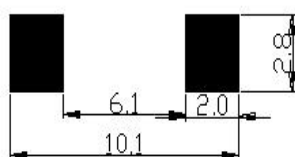
1.MECHANICAL DIMENSION



UNIT:mm

A	8.3MAX
A1	10.0MAX
B	8.3MAX
C	4.7MAX
D	6.3REF
E	2.5REF
F	1.2REF
G	
H	
I	

2.RECOMMEND LAND PATTERN DIMENSIONS



3.SPECIFICATIONS

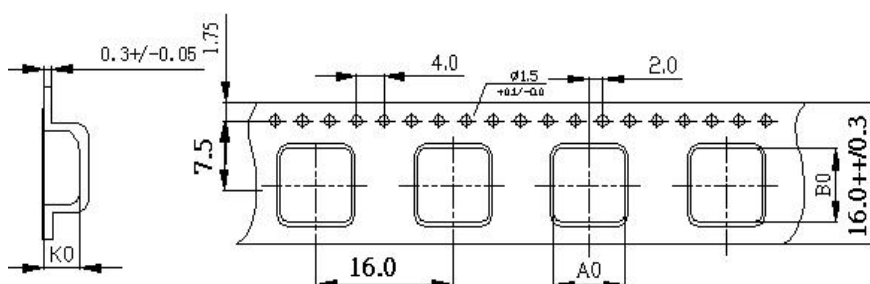
Part Number	L Inductance (uH) @(0A)	R _{dc} (mOHM)		Heat Rating Current DC Amps.Idc(A)	Saturation Current DC Amps.Idc(A)
		Typical	Max	Typical	Typical
BCRH8D43-100N	10.0	34	36	3.5	3.6

- (1). All test data is referenced to 25°C ambient.
- (2). Operating Temperature Rangr-30°C to +100°C.
- (3). DC current(A)that will cause an approximateΔT of 40°C.
- (4). DC current(A)that will cause Lo to drop approximately 35%.
- (5). The part temperature(ambient+temp rise)should not exceed 100°C under worst case operating conditions.Circuit design,component placement,PWB trace size and thickness,airflow and other cooling provisions all affect the part temperature part temperature should be verified in the end appliation.

4.PACKAGING INFORMATION

paets are packaged on 13"reels
800 parts per reel.

A0= 10.0mm+0.1/-0
B0= 8.3mm+0.1/-0
K0= 4.7mm+0.1/-0



APPROVED BY: CHECKED BY: DRAWN BY:chenlinli

ZHUHAI BAOCHENG ELECTRONICS CO.,LTD

TEST DATA FOR PREPRODUCTION SAMPLE

CUSTOMER:			CUSTOMER P/N:				CUSTOMER REV:			TEST DATE:2018-6-11	
PART NAME: SMD INDUCTOR			CY PART NO:BCRH8D43-100N				CY REV:			QUANTITY:10PCS	
TEST ITEM	A	A1	B	C	D	E	F	G	H	I	J
SPEC.	8.30	10.00	8.30	4.70							
	MAX	MAX	MAX	MAX							
01	8.07	9.63	8.03	4.46							
02	8.04	9.62	8.01	4.48							
03	8.05	9.53	8.04	4.32							
04	8.03	9.57	7.98	4.37							
05	8.01	9.60	8.00	4.39							
06	8.03	9.44	8.04	4.38							
07	7.97	9.49	7.99	4.30							
08	8.08	9.47	8.06	4.45							
09	8.13	9.47	7.99	4.48							
10	8.03	9.45	8.06	4.34							
11											
12											
13											
14											
15											
\bar{X}	8.04	9.53	8.02	4.40							
σ	0.041	0.069	0.028	0.063							
Cpk	2.09	5.92	39.13	23.11							
APPROVED BY				CHECKED BY				PREPARED BY			
Vincent				ChenFei				ZhaoQian			

ZHUHAI BAOCHENG ELECTRONICS CO.,LTD

TEST DATA FOR PREPRODUCTION SAMPLE

CUSTOMER:		CUSTOMER P/N:		CUSTOMER REV:		TEST DATE:2018-6-11	
PART NAME: SMD INDUCTOR		CY PART NO:BCRH8D43-100N		CY REV:		QUANTITY:10PCS	
TEST ITEM	L(0A)	L(3.6A)/L(0A)-100%	DCR(S-F)				
TEST CONDITION	100KHZ 0.25V						
SPEC.	10uH ±30%	≥65% AT DC 3.6A	36mΩ MAX				
01	10.00	83%	33.8				
02	10.74	85%	34.4				
03	10.02	82%	33.9				
04	9.86	83%	34.2				
05	10.53	80%	33.9				
06	10.58	82%	34.3				
07	10.67	79%	34.2				
08	11.08	83%	35.1				
09	10.62	85%	34.5				
10	9.79	86%	33.6				
11							
12							
13							
14							
15							
\bar{X}	10.39		34.19				
σ	0.414		0.409				
Cpk	2.73		1.48				

1. TEST INSTRUMENTS:

- HP-4284A METER
 HP-4285A METER
 HP-4191A METER
 VR116+VR7220 METER
 CH-3200 METER
 CH-310 METER
 CH-3305 METER
 CD1068+CD1320 METER
 WK3260B+WK3265B METER
 VR562 METER
 CH-502B DCR METER

2. CONDITION

TEMPERATURE: 25°C
 HUMIDITY: 65%RH

CORE:DR8*4.2^{D-3} B:4.0 F:2.6 T12SRI8*3.4*6.5^T T12S

WIRE:0.26mm*2p*11.5TS (REF)

TERMINAL:8D43 T2N

APPROVED BY

CHECKED BY

PREPARED BY

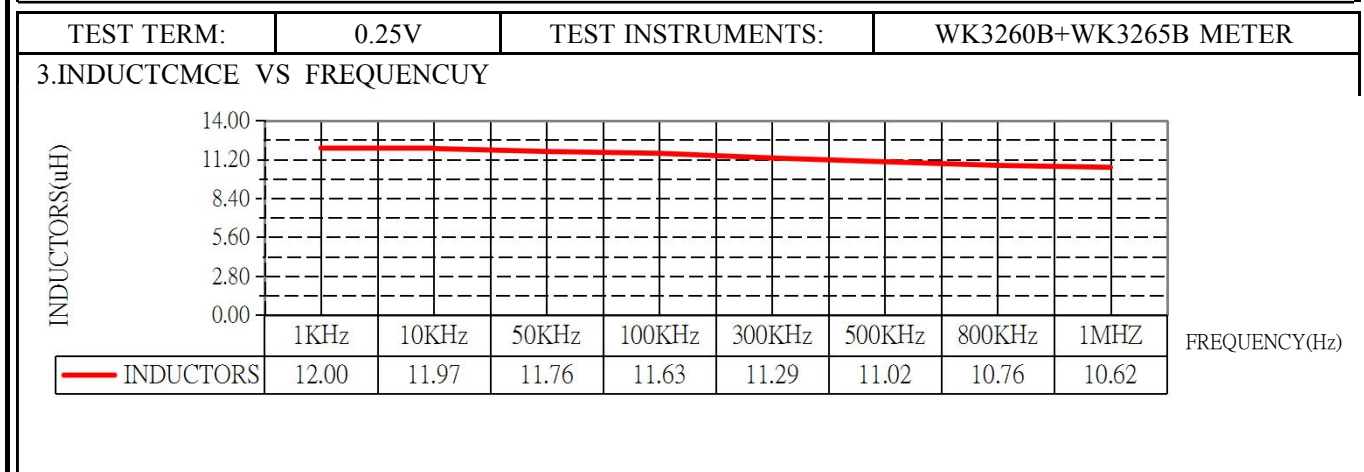
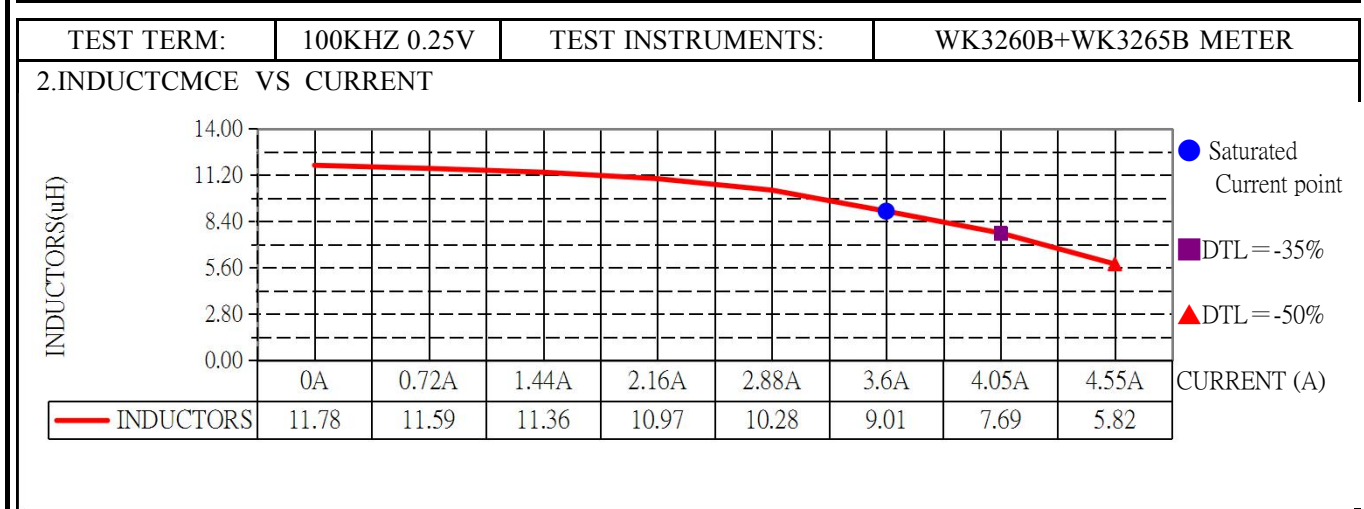
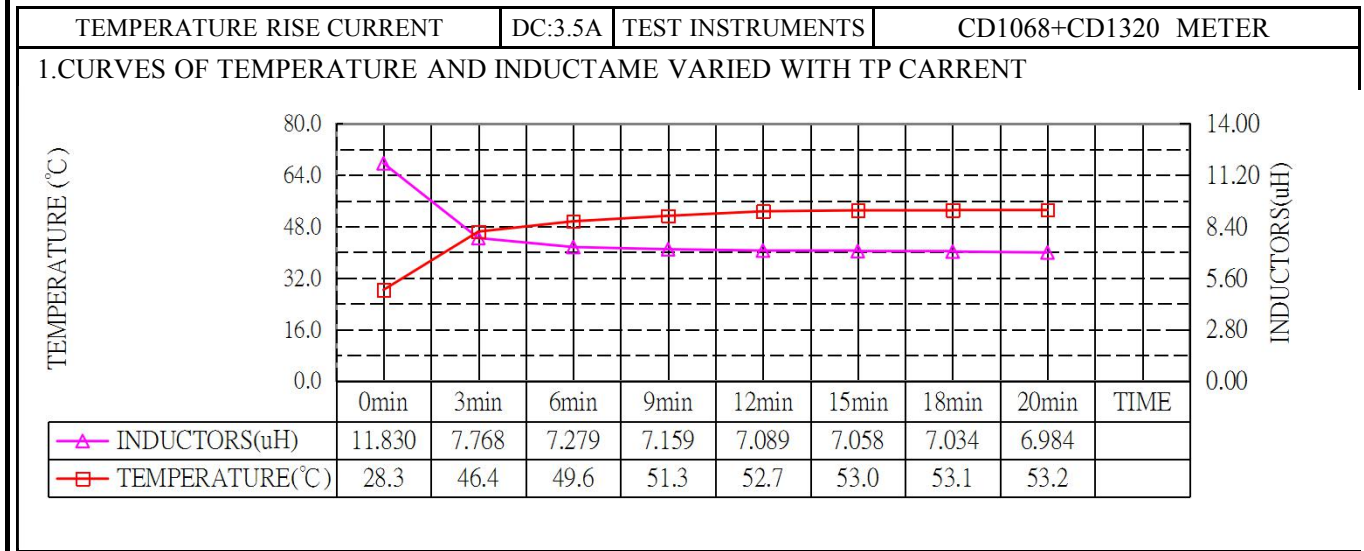
Vincent

ChenFei

ZhaoQian

ELECTRONICS CHARACTER TEST CHART

CUSTOMER:		CUSTOMER P/N:	TEST DATE:2018-6-11
PART NAME:	SMD INDUCTOR	CY P/N:BCRH8D43-100N	SAMPLE CO:



1. TEST CONDITION

TEMPERATURE: 25°C

HUMIDITY: ≅ 65% RH

APPROVED BY	CHECKED BY	PREPARED BY
		chenlinli

X-ON Electronics

Largest Supplier of Electrical and Electronic Components

Click to view similar products for [Fixed Inductors](#) category:

Click to view products by [Bao Cheng](#) manufacturer:

Other Similar products are found below :

[CR32NP-100KC](#) [CR32NP-151KC](#) [CR32NP-180KC](#) [CR32NP-181KC](#) [CR32NP-1R5MC](#) [CR32NP-390KC](#) [CR32NP-3R9MC](#) [CR32NP-680KC](#) [CR32NP-820KC](#) [CR32NP-8R2MC](#) [CR43NP-390KC](#) [CR43NP-560KC](#) [CR43NP-680KC](#) [CR54NP-181KC](#) [CR54NP-470LC](#) [CR54NP-820KC](#) [CR54NP-8R5MC](#) [70F224AI](#) [MGDQ4-00004-P](#) [MHL1ECTTP18NJ](#) [MHQ1005P10NJ](#) [MHQ1005P1N0S](#) [MHQ1005P2N4S](#) [MHQ1005P3N6S](#) [MHQ1005P5N1S](#) [MHQ1005P8N2J](#) [PE-51506NL](#) [PE-53601NL](#) [PE-53602NL](#) [PE-53630NL](#) [PE-53824SNLT](#) [PE-92100NL](#) [PG0434.801NLT](#) [PG0936.113NLT](#) [9220-20](#) [9310-16](#) [PM06-2N7](#) [PM06-39NJ](#) [A01TK](#) [1206CS-471XJ](#) [HC2LP-R47-R](#) [HC2-R47-R](#) [HC3-2R2-R](#) [HCF1305-3R3-R](#) [1206CS-151XG](#) [RCH664NP-140L](#) [RCH664NP-4R7M](#) [RCH8011NP-221L](#) [RCP1317NP-332L](#) [RCP1317NP-391L](#)