

承 認 書

SPECIFICATION FOR APPROVAL

CUSTOMER:	
CUSTOMER P/N	
PART NO:	
DESCRIPTION:	SMD POWER INDUCTORS
PRODUCTS NO:	BCRH8D43-220N
PRODUCTS REV:	1
DATE:	2018-6-7

PURCHASER CONFIRMED		
REMARK		

PROVIDER ENGINEER DEPT.		
APPROVAL BY	CHECK BY	DRAWN BY
<i>Eng</i>	<i>Yasir</i>	<i>chenlinli</i>



TAIPEI OFFICE

誠陽實業有限公司
TAIWAN CHENG YANG COMPONENT CORP
2F-1, NO. 176, Chine-Yi Road., Zhonghe District, New Taipei City,
新北市中和區建一路176號2樓之一
POSTAL CODE: 23500
TEL NO.:+886-2- 8228-0930 FAX NO.:+886-2-8228-0929 E-



CHINA FACTORY

寶誠電子有限公司
ZHUHAI BAO CHENG ELECTRONICSCO.,LTD
Guan Tang Industrial Park, Tang Jia Wan Town, Zhuhai City, Guangdong
中國廣東省珠海市塘家灣鎮官塘工業區
POSTAL CODE: 519085
TEL NO:86-756-3383187 FAX NO:86-756-3380704 E-mail:



CHINA FACTORY

昆山誠陽電子有限公司
KUNSHAN CHENG YANG ELECTRONICSCO.,LTDP
Qiang-An Road., High-Tech. Industrial Park, Kunshan City, Jiangsu Province,
江蘇省昆山市高科技工業園區強安路38號
POSTAL CODE: 215300
TEL NO:86-512-57823500 FAX NO:86-512-57823503 E-mail: kscy@taiwan-che

REVISION NOTES

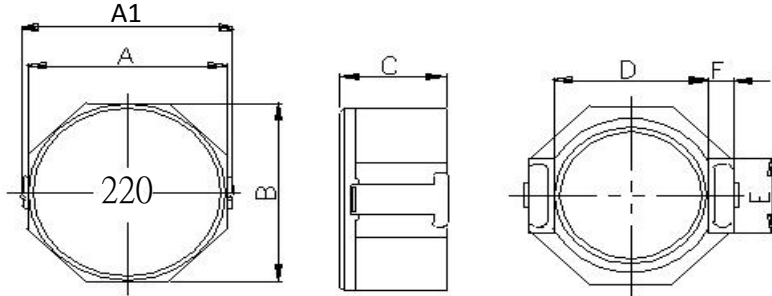
NO.	Date	Description of Revision
1	2018-6-7	首次送樣

TEST DATA

DIMENSION&ELECTRIC CHARACTER

CUSTOMER:		PART NO.:	
CUSTOMER :	SMD INDUCTOR	SERIES NO:	BCRH8D43-220N

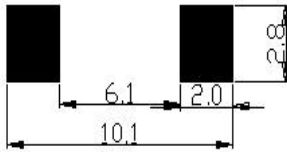
1.MECHANICAL DIMENSION



UNIT:mm

A	8.3MAX
A1	10.0MAX
B	8.3MAX
C	4.7MAX
D	6.3REF
E	2.5REF
F	1.2REF
G	
H	
I	

2.RECOMMEND LAND PATTERN DIMENSIONS



3.SPECIFICATIONS

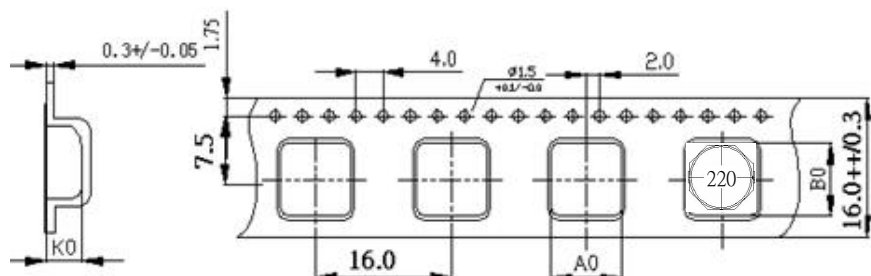
Part Number	L(0A) Inductance 22uH ± 30% @100KHZ 0.25V	R _{dc} (mOHM)		Heat Rating Current DC Amps.Idc(A)	Saturation Current DC Amps.Idc(A)
		Typical	Max	Typical	Typical
BCRH8D43-220N	22.0	67.8	75.0	2.43	2.10

- (1). All test data is referenced to 25°C ambient.
- (2). Operating Temperature Rangr-30°C to +100°C.
- (3). DC current(2.43A)that will cause an approaimate ΔT of 40°C.
- (4). DC current(2.1A)that will cause Lo to drop approximately25%.
- (5). The part temperature(ambient+temp rise)should not exeed 100°C under worst case operating conditions.Circuit design,component placement,PWB trace size and thickness,airflow and oter aooting provisions all affsct the part temperature part temperature should be verified in the end appliation.

4.PACKAGING INFORMATION

paets are packaged on 13"reels
800 parts per reel.

A0= 10.0mm+0.1/-0
B0= 8.3mm+0.1/-0
K0= 4.7mm+0.1/-0



APPROVED BY: Vincent

CHECKED BY: Yasir

DRAWN BY: chenlinli

KUNSHAN CHENG YAN ELECTRONICS CO.,LTD

TEST DATA FOR PREPRODUCTION SAMPLE

CUSTOMER:			CUSTOMER P/N:				CUSTOMER REV:			2018-6-7	
PART NAME: SMD INDUCTOR			BC PART NO:BCRH8D43-220N				BC REV:			QUANTITY:5PCS	
TEST ITEM	A	A1	B	C	D	E	F	G	H	I	J
SPEC.	8.30	10.00	8.30	4.70							
	MAX	MAX	MAX	MAX							
01	7.93	9.61	8.06	4.32							
02	7.84	9.62	7.91	4.38							
03	7.91	9.53	7.91	4.34							
04	7.96	9.56	7.97	4.34							
05	7.92	9.59	7.96	4.32							
06											
07											
08											
09											
10											
11											
12											
13											
14											
15											
\bar{X}	7.91	9.58	7.96	4.34							
σ	0.040	0.033	0.055	0.022							
Cpk	3.26	12.91	19.80	66.03							
APPROVED BY				CHECKED BY				PREPARED BY			
Vincent				Yasir				chenlinli			

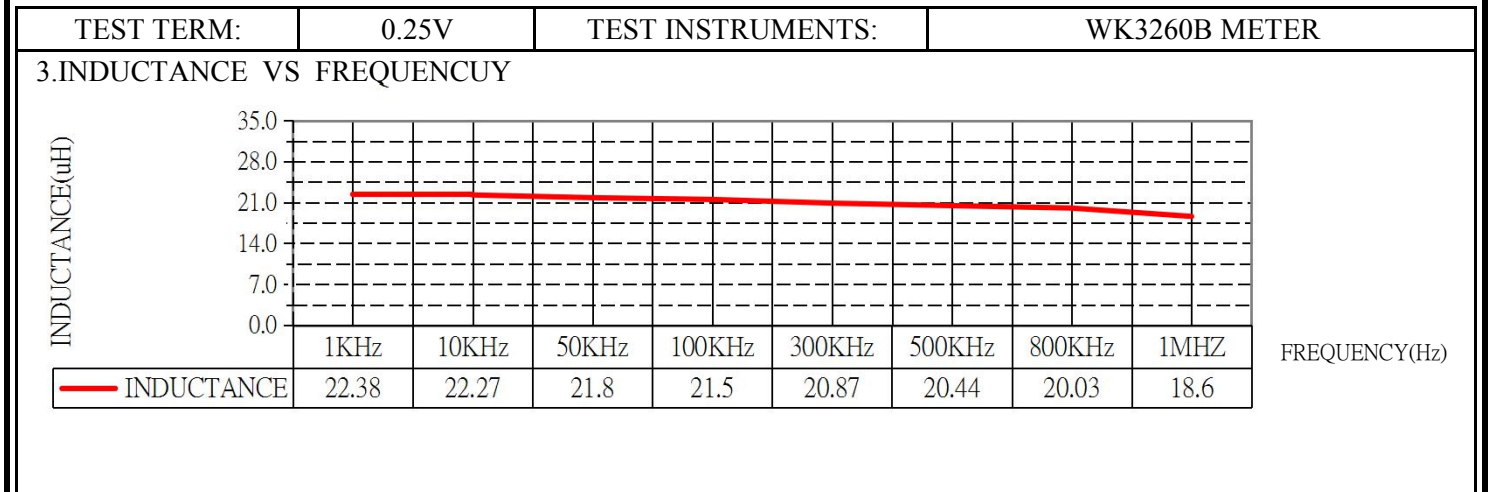
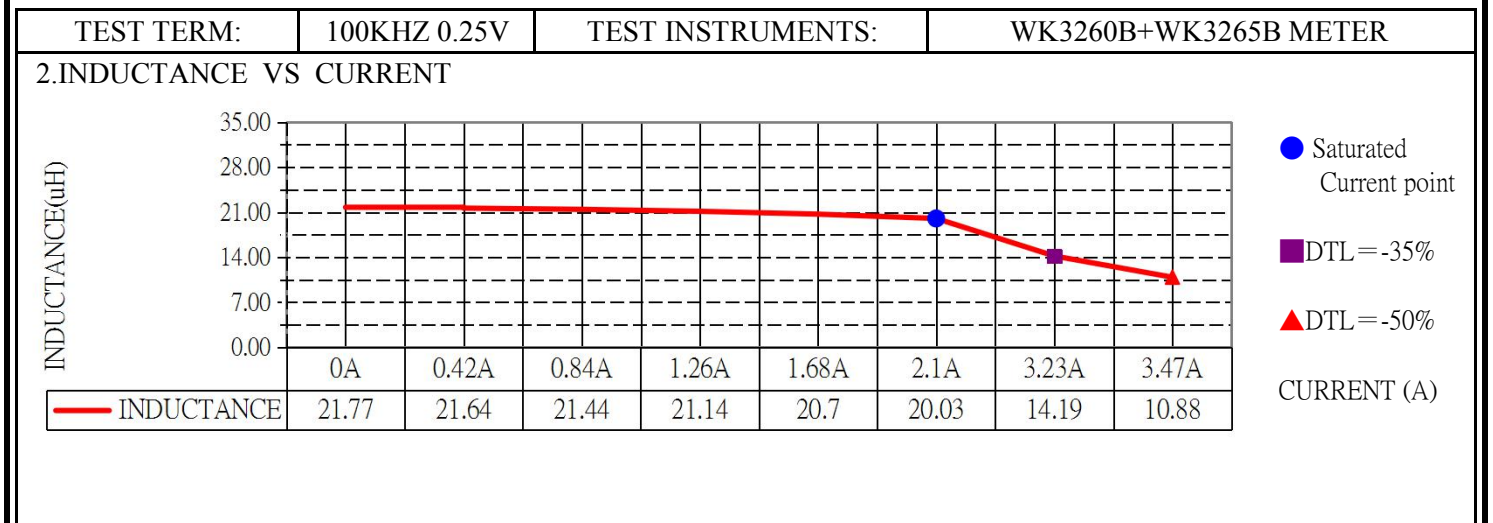
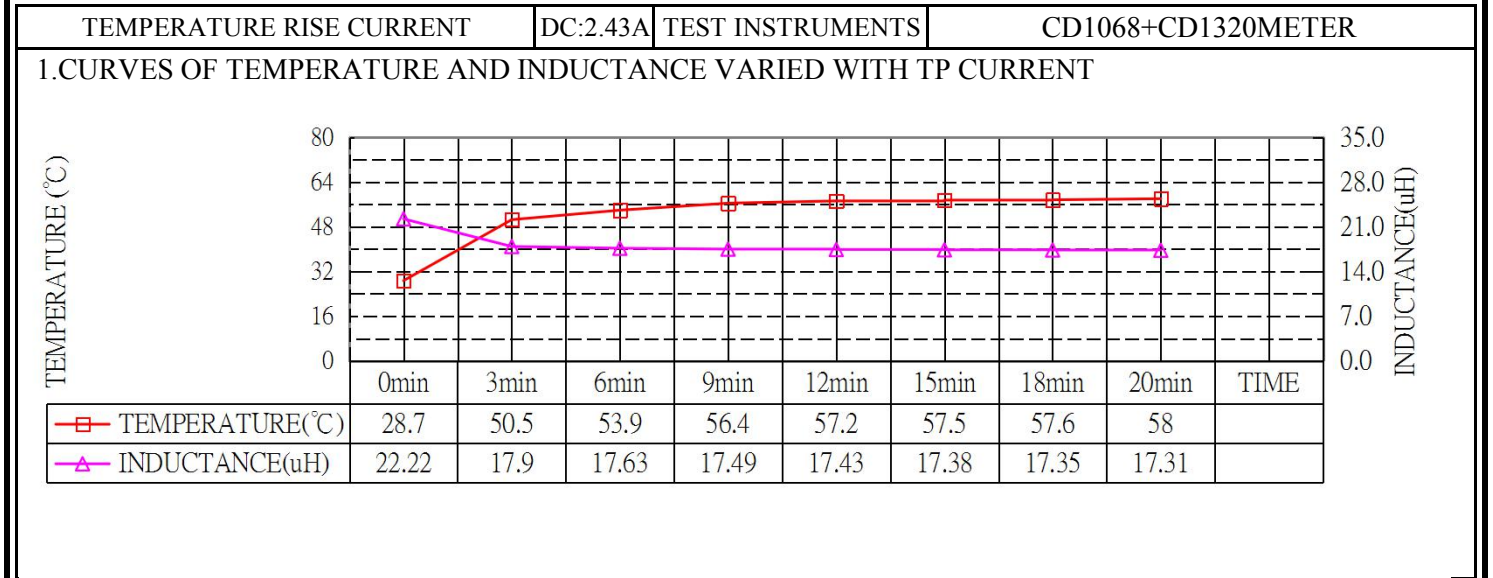
KUNSHAN CHENG YAN ELECTRONICS CO.,LTD

TEST DATA FOR PREPRODUCTION SAMPLE

		CUSTOMER P/N:		CUSTOMER REV:		2018-6-7			
PART NAME: SMD INDUCTOR		BC PART NO:BCRH8D43-220N		BC REV:		QUANTITY:5PCS			
TEST ITEM	L(0A)	L(2.1A)	DCR(S-F)						
TEST CONDITION	100KHZ 0.25V								
SPEC.	22uH ±30%	≥65% AT DC 2.1A	75mΩ MAX						
01	24.96	89%	67.18						
02	24.82	91%	67.76						
03	22.02	95%	67.28						
04	23.84	91%	67.70						
05	24.53	90%	68.82						
06									
07									
08									
09									
10									
11									
12									
13									
14									
15									
\bar{X}	24.03		67.75						
σ	1.078		0.582						
Cpk	1.41		4.15						
1. TEST INSTRUMENTS: <input type="checkbox"/> HP-4284A METER <input type="checkbox"/> HP-4285A METER <input type="checkbox"/> HP-4191A METER <input type="checkbox"/> VR113+VR712 METER <input type="checkbox"/> VR116+VR7220 METER <input type="checkbox"/> CH-3200 METER <input type="checkbox"/> CH-310 METER <input type="checkbox"/> CH-3305 METER <input checked="" type="checkbox"/> CD1068+CD1320 METER <input checked="" type="checkbox"/> WK3260B+WK3265B METER <input type="checkbox"/> VR562 METER <input checked="" type="checkbox"/> CH-502B DCR METER				APPROVED BY		CHECKED BY		PREPARED BY	
2.CONDITION TEMPERATURE: 25 °C				Vincent		Yasir		chenlinli	

ELECTRONICS CHARACTER TEST CHART

CUSTOMER:		CUSTOMER P/N:	TEST DATE: 2018-6-7
CUSTOMER :	SMD INDUCTOR	CY PN: BCRH8D43-220N-NL	SAMPLE CO:



1. TEST CONDITION
 TEMPERATURE: 25°C
 HUMIDITY: ≅ 65% RH

APPROVED BY	CHECKED BY	PREPARED BY
Vincent	ChenFei	ZhaoQian

X-ON Electronics

Largest Supplier of Electrical and Electronic Components

Click to view similar products for [Fixed Inductors](#) category:

Click to view products by [Bao Cheng](#) manufacturer:

Other Similar products are found below :

[CR32NP-100KC](#) [CR32NP-151KC](#) [CR32NP-180KC](#) [CR32NP-181KC](#) [CR32NP-1R5MC](#) [CR32NP-390KC](#) [CR32NP-3R9MC](#) [CR32NP-680KC](#) [CR32NP-820KC](#) [CR32NP-8R2MC](#) [CR43NP-390KC](#) [CR43NP-560KC](#) [CR43NP-680KC](#) [CR54NP-181KC](#) [CR54NP-470LC](#) [CR54NP-820KC](#) [CR54NP-8R5MC](#) [70F224AI](#) [MGDQ4-00004-P](#) [MHL1ECTTP18NJ](#) [MHQ1005P10NJ](#) [MHQ1005P1N0S](#) [MHQ1005P2N4S](#) [MHQ1005P3N6S](#) [MHQ1005P5N1S](#) [MHQ1005P8N2J](#) [PE-51506NL](#) [PE-53601NL](#) [PE-53602NL](#) [PE-53630NL](#) [PE-53824SNLT](#) [PE-92100NL](#) [PG0434.801NLT](#) [PG0936.113NLT](#) [9220-20](#) [9310-16](#) [PM06-2N7](#) [PM06-39NJ](#) [A01TK](#) [1206CS-471XJ](#) [HC2LP-R47-R](#) [HC2-R47-R](#) [HC3-2R2-R](#) [HCF1305-3R3-R](#) [1206CS-151XG](#) [RCH664NP-140L](#) [RCH664NP-4R7M](#) [RCH8011NP-221L](#) [RCP1317NP-332L](#) [RCP1317NP-391L](#)