

# Basler's Vision Components



- Perfectly matched vision components from one source
- Thoroughly tested, highly reliable products
- Broad and qualified portfolio
- Needs-oriented products
- Best value for your money
- Professional consultancy through extensive computer vision know-how

# OVERVIEW

## Basler's Components Enhance Your Vision

An image processing system needs more than just a camera. Only a lens, light source, reliable data transfer and additional components such as frame grabbers, trigger cables, PC cards and power supplies turn a vision system into a functioning unit. High standards must be met in terms of quality, reliability and long-term availability with a good price/benefit ratio.

Basler offers a large selection of vision components that match each other perfectly. The priority in the

careful selection of the portfolio is the compatibility and reliability of the components, as we strive to provide the right needs-oriented setup for complex, efficient systems as well as for cost-effective solutions.

As technology leader, Basler is substantially involved in the development of new standards and offers all of the necessary, perfectly matched vision components from one source. As a result, our customers benefit from the superior reliability of their entire vision system.



### Basler Vision Components - Benefits at a Glance

#### Cost savings due to

- in-house developments or developments in cooperation with other companies
- needs-oriented products
- complexity reduction thanks to perfectly harmonized components
- one-stop shopping
- Single Point of Contact (SPoC)
- long-term availability

#### High reliability due to

- matching, certified and tested vision components
- regular function and interoperability tests
- provision of all required certifications

#### Good delivery times and long-term availability due to

- in-house logistics
- same deliverability for camera and compatible accessories
- spare parts supply throughout the entire lifecycle if needed

#### Easy system setup & simple integration due to

- broad and harmonized product portfolio
- time-saving tools to configure and select components
- professional consulting before and after the buying decision with distinctive computer vision know-how

# BASLER'S VISION COMPONENTS

## Lighting

Lighting plays a major role in a vision system as it provides the light that, in conjunction with other vision components such as cameras and lenses, ensures the best possible and repeatable image quality in a wide range of applications. We offer high-quality lighting equipment that is perfectly matched to our most popular camera models and greatly simplifies the design of your image processing system. In cooperation with CCS, the world's leading manufacturer of LED lighting for machine vision applications, we have developed a comprehensive portfolio of various lighting components that meet the specific requirements for lighting in a vision system and offer innovative light control directly from the camera. Learn more at [baslerweb.com/lighting](https://baslerweb.com/lighting)

## Cameras

Basler offers you a large selection of cameras for industry, medicine, traffic and a variety of other markets. Basler's extensive experience in the field of camera design and camera production is reflected in the high image quality of our area scan, line scan and network cameras. All cameras are tested and calibrated to meet our strict quality standards, ensuring consistently strong performance and reliability. Learn more at [baslerweb.com/cameras](https://baslerweb.com/cameras)



## Lenses

We offer the right lens for every Basler camera. Our Basler Lens portfolio covers image circles from 1/2.5" to 1.1" and resolutions from 2 to 12 megapixels. Whether there are high requirements in terms of image quality or a focus on lower costs due to competitive pressure, Basler offers two product lines for both scenarios. The Standard product line stands for the best price/performance ratio and offers good basic performance. The Premium product line offers optimal imaging quality with much higher optical resolution but without neglecting the cost factor. Learn more at [baslerweb.com/basler-lenses](https://baslerweb.com/basler-lenses)

## Cables

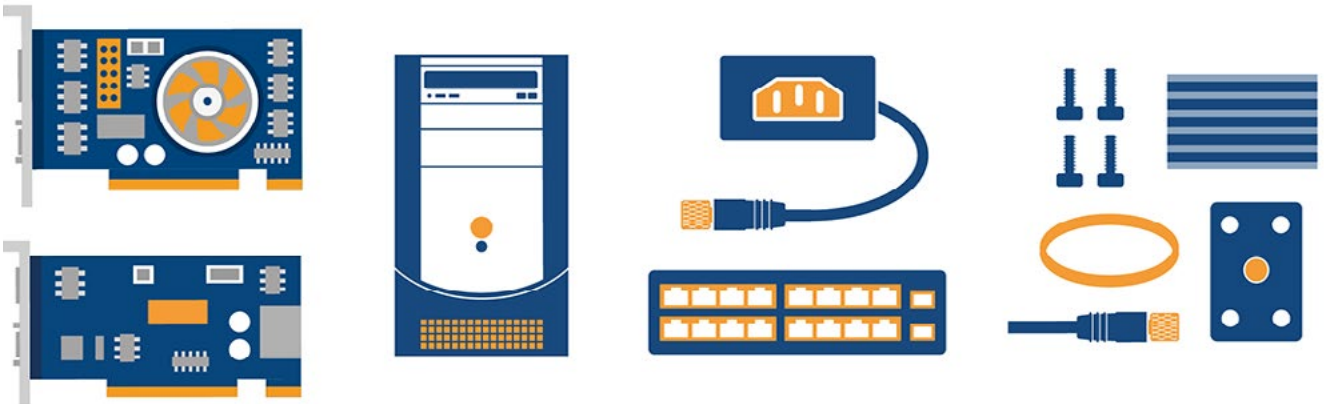
Basler provides a comprehensive cable portfolio for all popular Basler camera interfaces. In addition to suitable I/O cables, customers can choose from a large range of data cables which are compatible with our cameras for the GigE, USB 3.0, CoaXPress and Camera Link interfaces. Learn more at [baslerweb.com/cables](https://baslerweb.com/cables)

### Frame Grabbers

Frame grabbers are the control center for robust high-speed image acquisition and processing in real time on FPGAs including image pre-processing, which minimizes the CPU load. Paired with graphic FPGA programming (VisualApplets), software and appropriate components, our frame grabbers play a vital role in the success of your individual image processing project. Learn more at [baslerweb.com/framegrabbers](http://baslerweb.com/framegrabbers)

### Network & Peripheral Devices

In the setup of complex multi-camera applications, the use of additional peripheral devices – such as USB 3.0 hubs or Gigabit Ethernet switches – is essential. In its product portfolio, Basler offers not only power supplies compatible with all cameras but also network components for the USB 3.0 and Gigabit Ethernet interfaces. These components have gone through the Basler qualification process as individual components and have also been proven reliable in the overall system. Learn more at [baslerweb.com/network](http://baslerweb.com/network)



### PC Cards

Image processing systems are used for a wide range of applications. Different interface technologies may be suitable depending on the application. Constantly increasing data volumes in image processing lead to constantly new challenges. With PC cards from Basler, you can stay flexible and ensure safe and reliable image capture for your optimal interface. You'll also save time, because you no longer have to worry about defective updates for drivers or operating systems for on-board interfaces, such as USB 3.0. Learn more at [baslerweb.com/pccards](http://baslerweb.com/pccards)

### Accessories & Bundles

Carefully selected accessories are essential in a complete vision system and simplify the installation if everything is supplied from a single source. Our portfolio thus also offers adapters, housings and mounting aids to make your camera easier to install. In addition, we provide product bundles to make it easier for customers to select the right components and evaluate cameras. Learn more at [baslerweb.com/accessoriesbundles](http://baslerweb.com/accessoriesbundles)

## Basler Sales and Support Team - Worldwide in Your Area

We maintain a worldwide network of subsidiaries, offices and distributors to ensure that Basler customers always have a knowledgeable contact person in their area. From the Asia-Pacific area, across the Americas, Africa, Europe to the Middle East, Basler supports you with the selection of suitable components for your vision system.

If you have any specific questions or comments please contact us: [baslerweb.com/sales](http://baslerweb.com/sales)

## Technical Application Support

The 100% compatibility of all components determines the performance of your vision system. This complex issue includes many more facets than just mechanical dimensions or voltages.

All members of our worldwide Support team have years of experience in various fields of vision applications and markets. Through active knowledge shar-

ing and continuous education, we ensure up-to-date information resources, even in the broad and fast changing market of vision accessories.

Get in touch with the Basler Support team to benefit from our experience and knowledge, to ensure the best results in your vision business: [baslerweb.com/support](http://baslerweb.com/support)



## Our Online Tools

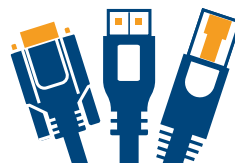
In addition to our strong Sales and Support team, we offer comprehensive tools to assist you in your research and decision making process for suitable components for your vision system.



### Lens Selector

Our lens selector helps you to find the right lens for your Basler area scan camera. Using parameters such as focal length, angle of view, working distance and object size, it provides you with a suggestion of suitable lenses.

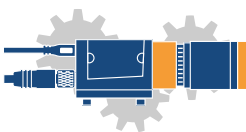
[baslerweb.com/lens-selector](http://baslerweb.com/lens-selector)



### Interface Advisor

If you are unsure about what digital camera interface to choose, you can use the Basler Interface Advisor. This tool helps you decide which interface suits your individual requirements best.

[baslerweb.com/interface-advisor](http://baslerweb.com/interface-advisor)



### Vision System Configurator

Select compatible components for your vision system with the help of our Vision

System Configurator:

[baslerweb.com/vision-system-configurator](http://baslerweb.com/vision-system-configurator).

You can pick cameras, lenses, power and data cables as well as other accessories step by step. We ensure that the selected components fit together.



### Download Section

Our document download section, offers you all product-related documents such as datasheets, manuals, certificates as well as white papers and success stories.

Additionally, you can download Basler software such as the pylon Camera Software Suite, IP camera firmware, or our Frame Rate Calculator for free. [baslerweb.com/downloads](http://baslerweb.com/downloads)



## OTHER INFORMATION

### Quality and Compliance

Quality is one of the main focuses at Basler. Our quality management system helps us to constantly extend and improve our performance. Compliance with

- CE
- UL
- RoHS and
- REACh

is, among other initiatives, part of our quality promise.

To optimize our operations and processes even further, we prepared and successfully implemented a comprehensive quality management system. In the spirit of ISO 9001:2008, we are working with an integrated management system with a focus on continuous improvement in all operational processes.

We are continually investing in new ways to maximize our manufacturing and testing capabilities and make sure that each product performs in the field. For detailed information, please visit [baslerweb.com/quality](http://baslerweb.com/quality)

### About Basler

Basler is a leading manufacturer of high-quality cameras and camera accessories for industry, medicine, traffic and a variety of other markets. The company's product portfolio encompasses area scan and line scan cameras in compact housing dimensions, camera modules in board level variants for embedded vision solutions, and 3D cameras. The catalog is rounded off by our user-friendly pylon SDK plus a broad spectrum of accessories, including several developed specially for Basler and optimally harmonized for our cameras. Basler has three decades of experience in computer vision. The Basler Group is home to approximately 800 employees at its headquarters in Ahrensburg, Germany, and at other locations in Europe, Asia, and North America.



**Basler AG**  
**Germany, Headquarters**  
Tel. +49 4102 463 500  
[sales.europe@baslerweb.com](mailto:sales.europe@baslerweb.com)

**Basler, Inc.**  
**USA**  
Tel. +1 610 280 0171  
[sales.usa@baslerweb.com](mailto:sales.usa@baslerweb.com)

**Basler Asia Pte Ltd.**  
**Singapore**  
Tel. +65 6367 1355  
[sales.asia@baslerweb.com](mailto:sales.asia@baslerweb.com)

©Basler AG, No. 04, 02/2020  
ID 22000000088

Please visit our website to find further Basler offices and representatives close to you:  
[www.baslerweb.com/sales](http://www.baslerweb.com/sales)

**BASLER**  
the power of sight

## X-ON Electronics

Largest Supplier of Electrical and Electronic Components

*Click to view similar products for [Camera Lenses](#) category:*

*Click to view products by [Basler](#) manufacturer:*

Other Similar products are found below :

[2200001060](#) [2200001057](#) [2000034835](#) [2000035183](#) [2000035612](#) [2000035614](#) [2000036376](#) [2000036060](#) [2000036061](#) [2000036374](#)  
[2000034832](#) [2000034831](#) [2000034830](#) [2000036379](#) [2000035191](#) [2000035615](#) [2000035176](#) [2000034834](#) [2000034833](#) [2000036377](#)  
[2000035182](#) [2000035181](#) [2000035179](#) [2000035611](#) [2000036380](#) [2000035178](#) [2000035175](#) [4562](#) [4563](#) [2000024600](#) [2000034700](#)  
[2000035180](#) [2000035184](#) [2000035198](#) [2000036382](#) [2000036383](#) [2000036384](#) [2000036385](#) [2000036388](#) [2200000179](#) [2200000183](#)  
[2200000568](#) [2200000570](#) [2200000579](#) [2200000589](#) [2200000961](#) [FIT0828](#) [FIT0829](#) [2000036378](#) [2000035177](#)