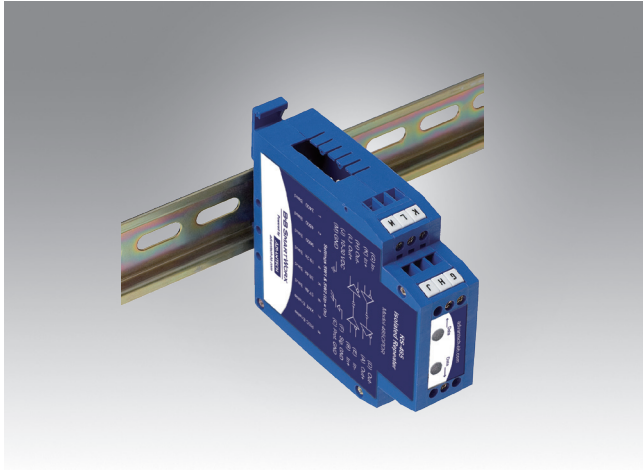


# BB-4850PDR

## RS-422/485 Repeater, Industrial



### Features

- Extends RS-422/485 data additional 1.2 km
- 2000V optical isolation for data lines; 600W surge suppression
- -40 to +80 °C wide operating temperature
- DIN rail mount (panel mount with optional adapter)
- Automatic Send Data control - no software drivers needed
- cULus Recognized, UL Recognized, CE, FCC
- 10-30 V power supply required (not included, sold separately)

### Specifications

#### RS-422/485

- **Connector** Terminal block
- **Signals** TDA(-), TDB(+), RDA(-), RDB(+), GND  
RS-422 4-wire, RS-485 2-wire and 4-wire.  
Protected GND on isolated side.
- **Data Rate** Up to 115.2 kbps (switch selectable)

#### Isolation

- **Method** Optical
- **Rating** 2000 V

#### Surge Suppression

- **Method** TVS
- **Rating** 6.5V bi-directional avalanche breakdown device  
500W peak power dissipation  
<1 pico-second
- **Response Time** <1 pico-second
- **Industrial Bus** Modbus ASCII / RTU

#### Power

- **Connector** Terminal block
- **Voltage** 10 to 30 V<sub>DC</sub>
- **Power Consumption** 0.7 W
- **Source** External source required

#### Terminal Blocks

- **Wire Size** 24 to 14 AWG
- **Torque** 4 kgf-cm

#### LED Indicators

- **2 Data LEDs (red)** Data LED for each side of isolator  
Flashes when data transmitted

#### Enclosure

- **Material** Plastic
- **IP Rating** 20
- **Dimensions** 2.5 x 7.9 x 10.6 cm
- **Mounting** 35 mm DIN rail (panel mount adapter, sold separately)

#### Environmental

- **Operating Temperature** -40 to +80 °C
- **Storage Temperature** -40 to +85 °C
- **Operating Humidity** 0 to 95% Non-condensing

#### Meantime Between Failures (MTBF)

- **MTBF** 225299 hours
- **MTBF Calc. Method** MIL217F Parts Count Reliability

#### Approvals, Directives, Standards

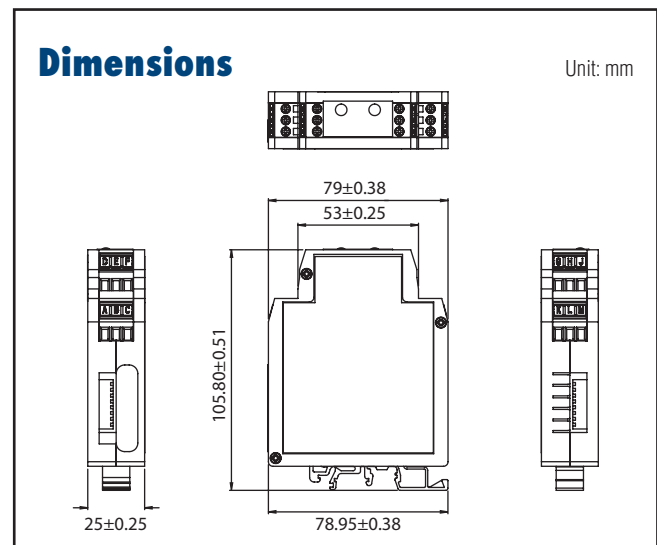
- **Agency Approvals** CE, FCC, KCC, cULus Recognized, UL508 UL Recognized
- **EU Directives** 2014/30/EU – Electromagnetic Compatibility Directive  
2015/863/EU – Reduction of Hazardous Substances Directive (RoHS)  
2012/19/EU – Waste Electrical & Electronic Equipment (WEEE)
- **EU EMC Standards** EN 55032 Class A – Electromagnetic Compatibility of Multimedia Equipment – Emission Requirements  
EN 55024 – Information Technology Equipment – Immunity Characteristics – Limits and Methods of Measurement  
EN 61000-6-1 – Generic immunity standard for residential, commercial and light-industrial environments

### Ordering Information

- **BB-4850PDR** RS-422/485 Repeater, Industrial

#### Accessories – sold separately

- **BB-MDR-20-24** Power supply, 24V<sub>DC</sub>, 1.0 A output, DIN rail mount
- **BB-MDR-40-24** Power supply, 24V<sub>DC</sub>, 1.7 A output, DIN rail mount
- **BB-EK-CLIP-MPC** DIN rail clip for enclosure



## X-ON Electronics

Largest Supplier of Electrical and Electronic Components

*Click to view similar products for [Interface Modules](#) category:*

*Click to view products by [B&B Electronics](#) manufacturer:*

Other Similar products are found below :

[IFD8520](#) [cPCI-3544](#) [422CON](#) [ATX6022/14GP7](#) [ATX6022/8](#) [AX93221-24/48](#) [FC6A-EXM2](#) [OPT8AP-AE](#) [96RMKVM-19V1C-A](#) [60016-011](#) [60016-014](#) [60006-008](#) [60011-075](#) [HPCI-14S12U](#) [cBP-3208](#) [cBP-3062A](#) [FAB205-6P5](#) [ATX6022/6](#) [60016-012](#) [96RMKVM-17V1C-A](#) [MOS-1120Y-0201E](#) [96RMLCD-17V1-A](#) [96RMKVM-17V8C-A](#) [60004-005](#) [60016-017](#) [60006-009](#) [60016-035](#) [60016-034](#) [60016-031](#) [60016-030](#) [60016-026](#) [60016-024](#) [60016-018](#) [60016-007](#) [60016-005](#) [60007-002](#) [60006-010](#) [AXX10GBTWLHW3](#) [382-BBEH](#) [555-BDCL](#) [K6CMISZBI52](#) [426451401-3](#) [60011-093](#) [MIC-3620/3-BE](#) [MPCIE-UART-KIT02-R20](#) [RSM232](#) [PCIE-1680-AE](#) [BB-FOSTCDRI](#) [73-544-002](#) [UC-313](#)